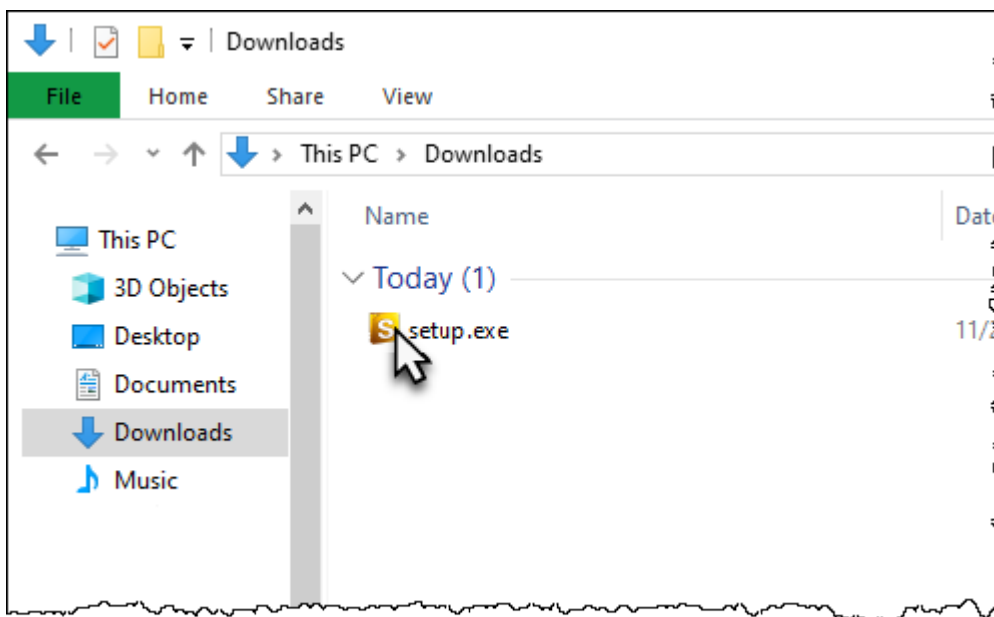


# Installing

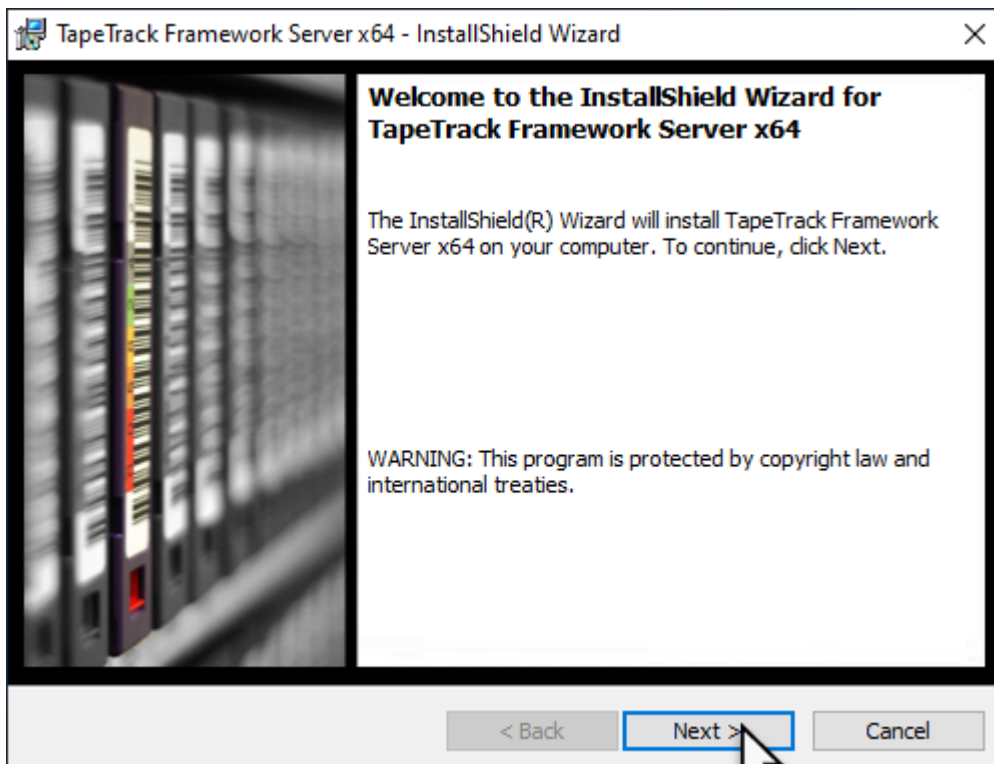
## Windows

The TapeTrack Framework Server Software installs automatically via an InstallShield installer.

Locate the executable you downloaded, setup.exe, and double click to initiate the installation.

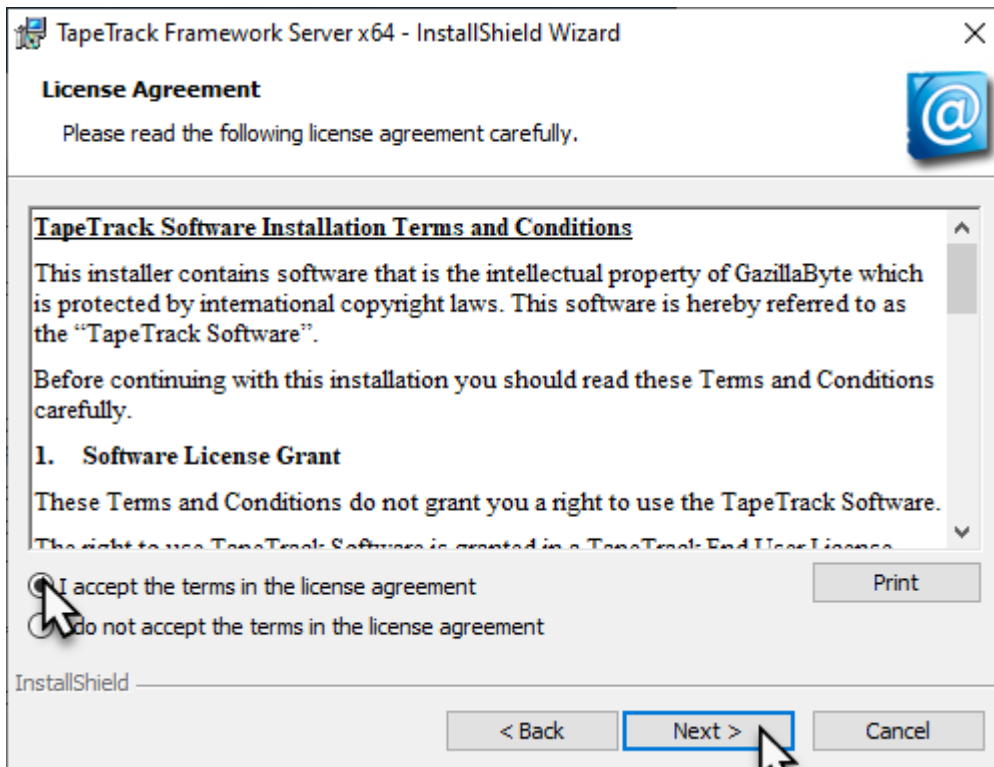


Click Next > to start the Install Shield Wizard.

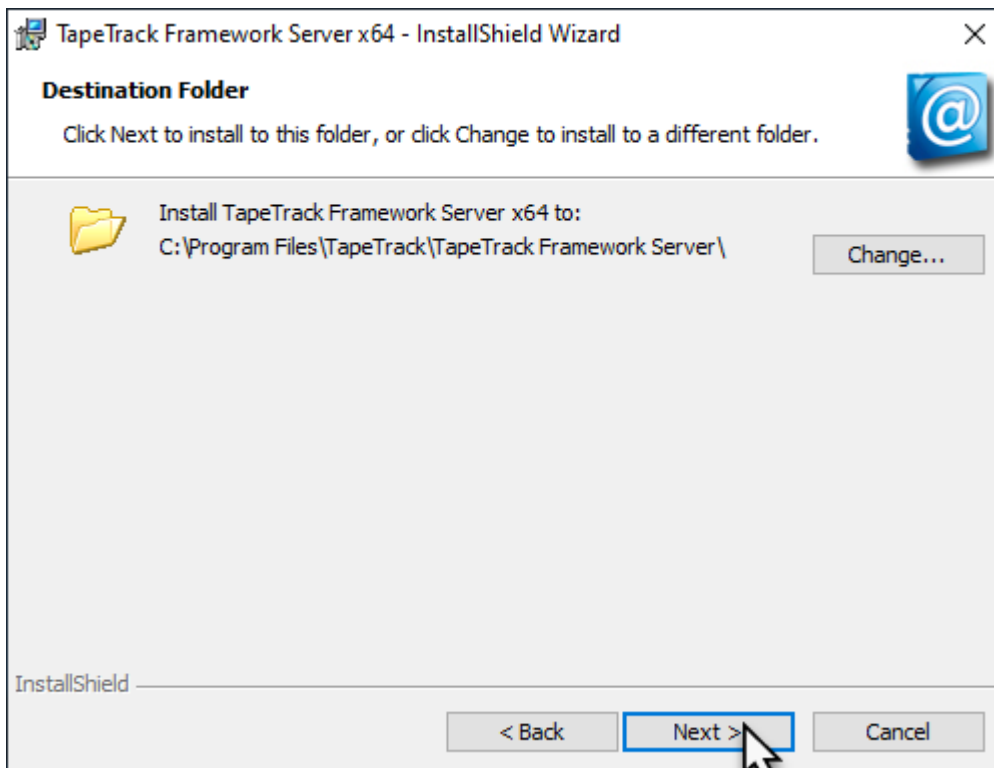


After reading and agreeing to the License Agreement click I accept the terms in the

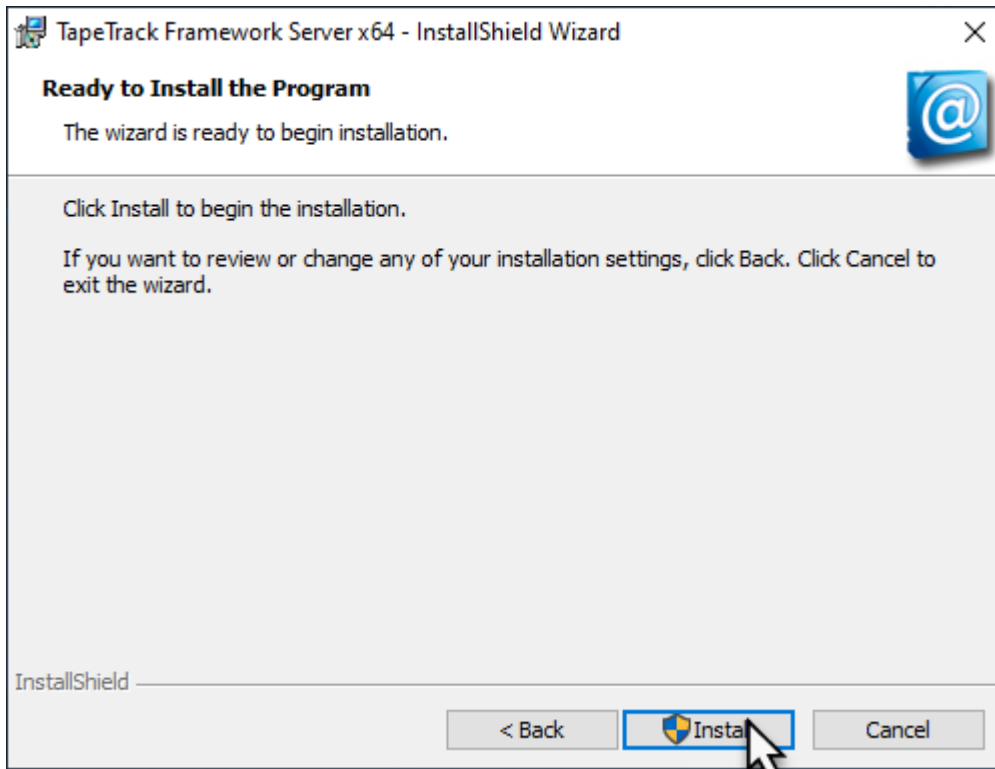
License agreement and Next > to proceed



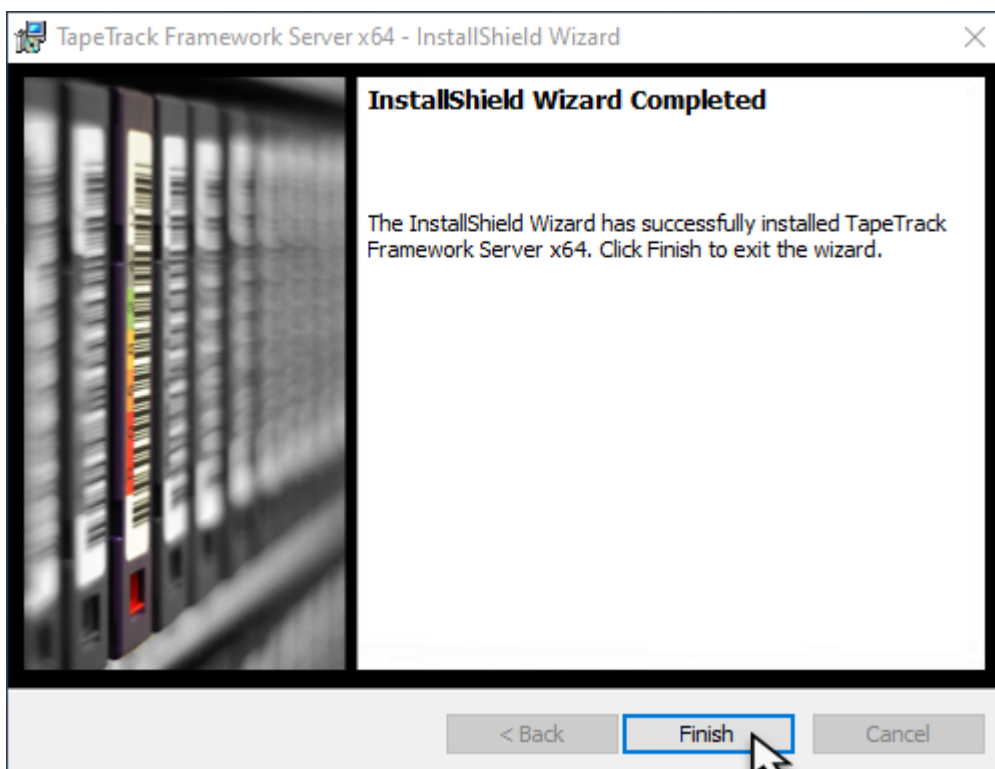
Confirm the installation directory is correct, or click Change to select another installation directory. Click Next > to proceed.



Click Install to begin the installation



Click Finish to exit the installer.



At the conclusion of the installation process, the installer will also kick-off an install of the following packages, which can optionally be installed:

- 1. TapeTrack TapeMaster
- 2. TapeTrack Server Utilities

# Linux

The TapeTrack Framework Server will be installed by the Redhat Package Manager (RPM).

An example installation command is:

Install the Client package (must be installed before the Server package).

```
rpm -i  
http://mirror-us.tapetrack.com/Linux-x86/tapetrack-clients-latest.i386.rpm
```

Install the Server package.

```
rpm -i  
http://mirror-us.tapetrack.com/Linux-x86/tapetrack-server-latest.i386.rpm
```

From:  
<https://rtfm.tapetrack.com/> - **TapeTrack Documentation**

Permanent link:  
<https://rtfm.tapetrack.com/server/installing?rev=1595309265>

Last update: **2025/01/21 22:07**

