

# Enabling Replication

The following information illustrates the steps required to enable a High Availability Replicant Server.

It is assumed that you already have a functional installation of TapeTrack Server running.

All steps must be performed in the order presented to create a successful connection between the Master and Replicant Server.

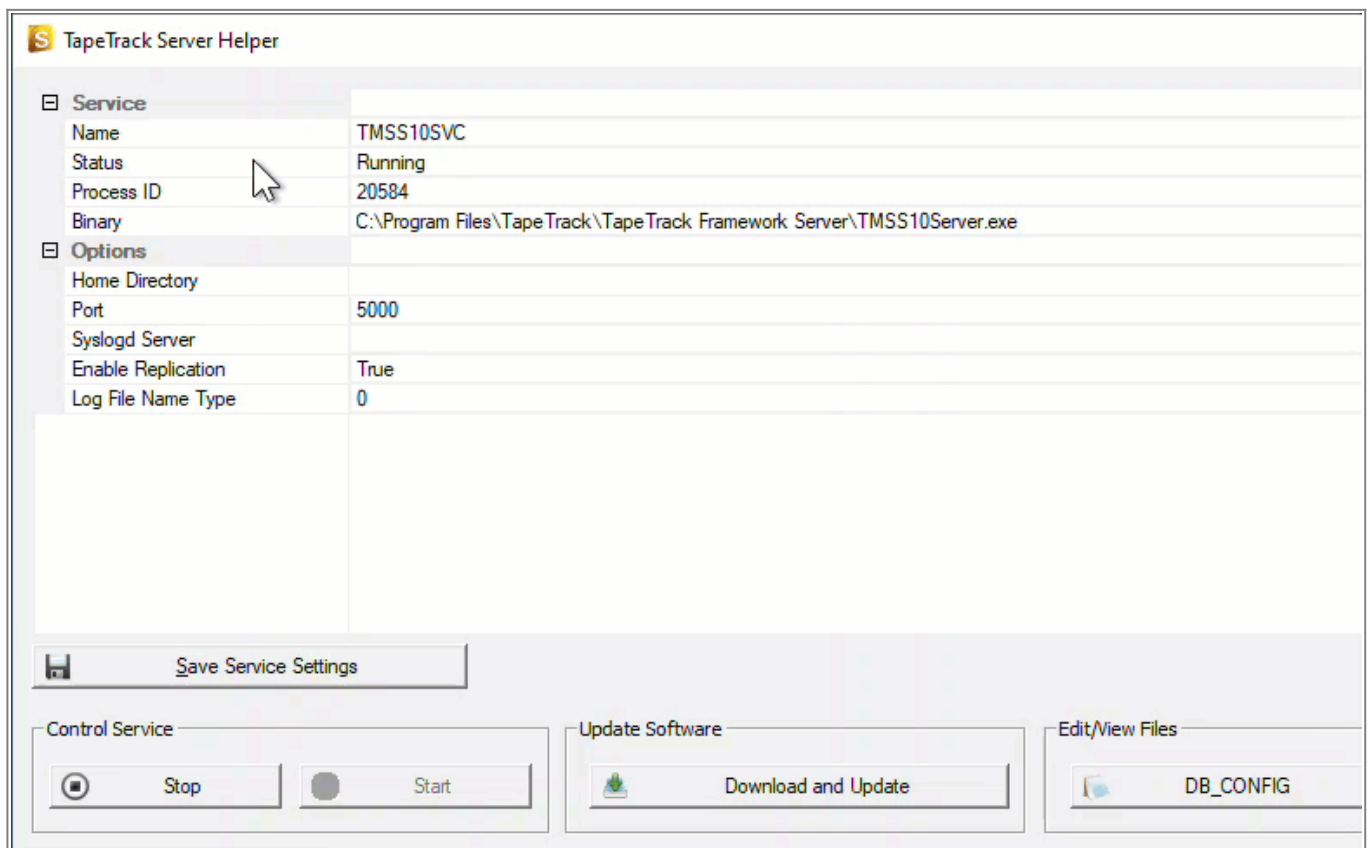
IP addresses included in the instructions are for demonstration only, these must be replaced with your correct values.

You have made a **complete backup of the master database** before attempting any of these instructions to maintain the database information should anything go wrong.

## Steps On Remote Server

[Install the TapeTrack Framework Server software on your Replicant machine.](#)

[Stop the service on the Replicant machine.](#)



Navigate Windows File Explorer to the TapeTrack Framework Server installation directory (TapeTrack\TapeTrack Framework Server) to the var\db folder.

Delete all database files on the Replicant machine (all files in the TapeTrack\TapeTrack Framework Server\var\db directory) **EXCEPT** the [DB\\_CONFIG](#) file).



Open the DB\_CONFIG file in Notepad, or equivalent text editor.

Edit the TapeTrack\TapeTrack Framework Server\DB\_CONFIG file to remove the comments (#'s) starting from the line **rep-set-priority 0** to make the machine a Replicant.

Edit the Replicant Server and Master Server host names in the DB\_CONFIG file.

- Replace **replicant-1.tapetrack.com** with the IP address of **your** Replicant Server (your\_replicant\_IP\_address used as Replicant IP example).
- Replace **master.tapetrack.com** with the IP address of **your** Master Server (your\_master\_IP\_address used as Master IP example).



Ensure you use the IP4 address for the Master and Replicant Server as using the domain name can cause issues with the IP6 address replacing the IP4 address, stopping the Master and Replicant communication.

```
DB_CONFIG - Notepad
File Edit Format View Help
set_flags DB_LOG_AUTOREMOVE
#
# Set the log directory to an alternate directory
#
set_lg_dir ..\dblogs
#
# Set Verbose Output
#
set_verbose DB_VERB_DEADLOCK
set_verbose DB_VERB_RECOVERY
set_verbose DB_VERB_REPLICATION
set_verbose DB_VERB_WAITSFOR
#
#rep_set_priority 1
#repmgr_site replicant-1.tapetrack.com 5010
#repmgr_site master.tapetrack.com 5010 db_local_site on db_group_creator on
#
# Optional settings
#
#rep_set_config DB_REP_CONF_BULK on
#rep_set_config DB_REP_CONF_AUTOINIT off
#
#
#rep_set_priority 0
#repmgr_site replicant-1.tapetrack.com 5010 db_local_site on
#repmgr_site master.tapetrack.com 5010 db_bootstrap_helper on
#rep_set_config DB_REP_CONF_BULK on
Ln 1, Col 1 100% Windows (CRLF) UTF-8
```



Ensure that the replication TCP/IP ports specified in the [DB\\_CONFIG](#) file are open for inbound connections.

## Steps On Master Server

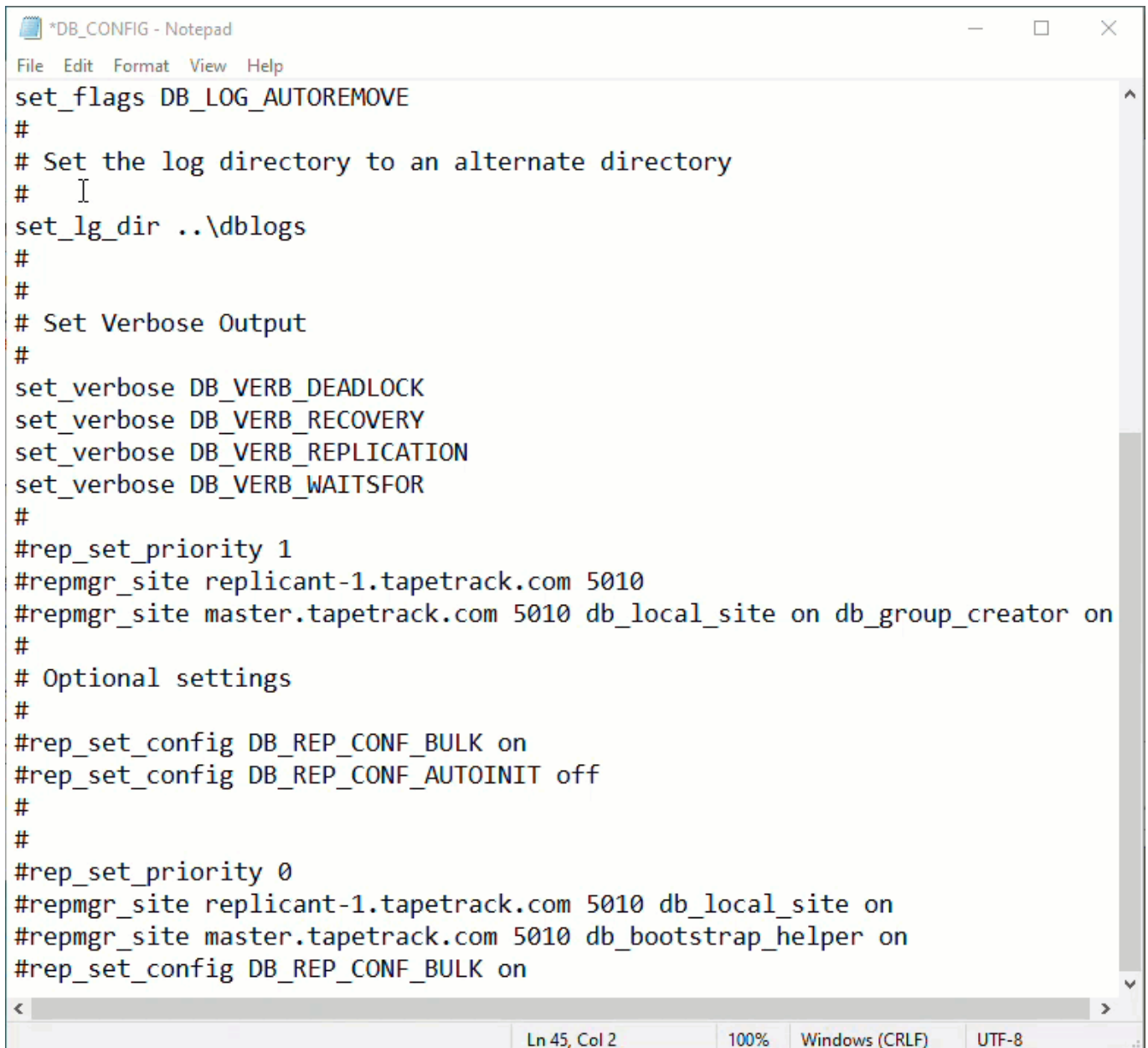
[Stop the TapeTrack service on the master TapeTrack server.](#)

Edit the TapeTrack\TapeTrack Framework Server\[DB\\_CONFIG](#) file and remove the comments ([#'s](#)) starting from the line **rep-set-priority 1** to make the machine a master server.

Edit the [DB\\_CONFIG](#) file to define the local and remote server. Edit the Replicant Server and Master Server host names in the [DB\\_CONFIG](#) file.

- Replace **replicant-1.tapetrack.com** with the domain name (or IP address) of **your** Replicant Server (your\_replicant\_IP\_address used as Replicant IP example).

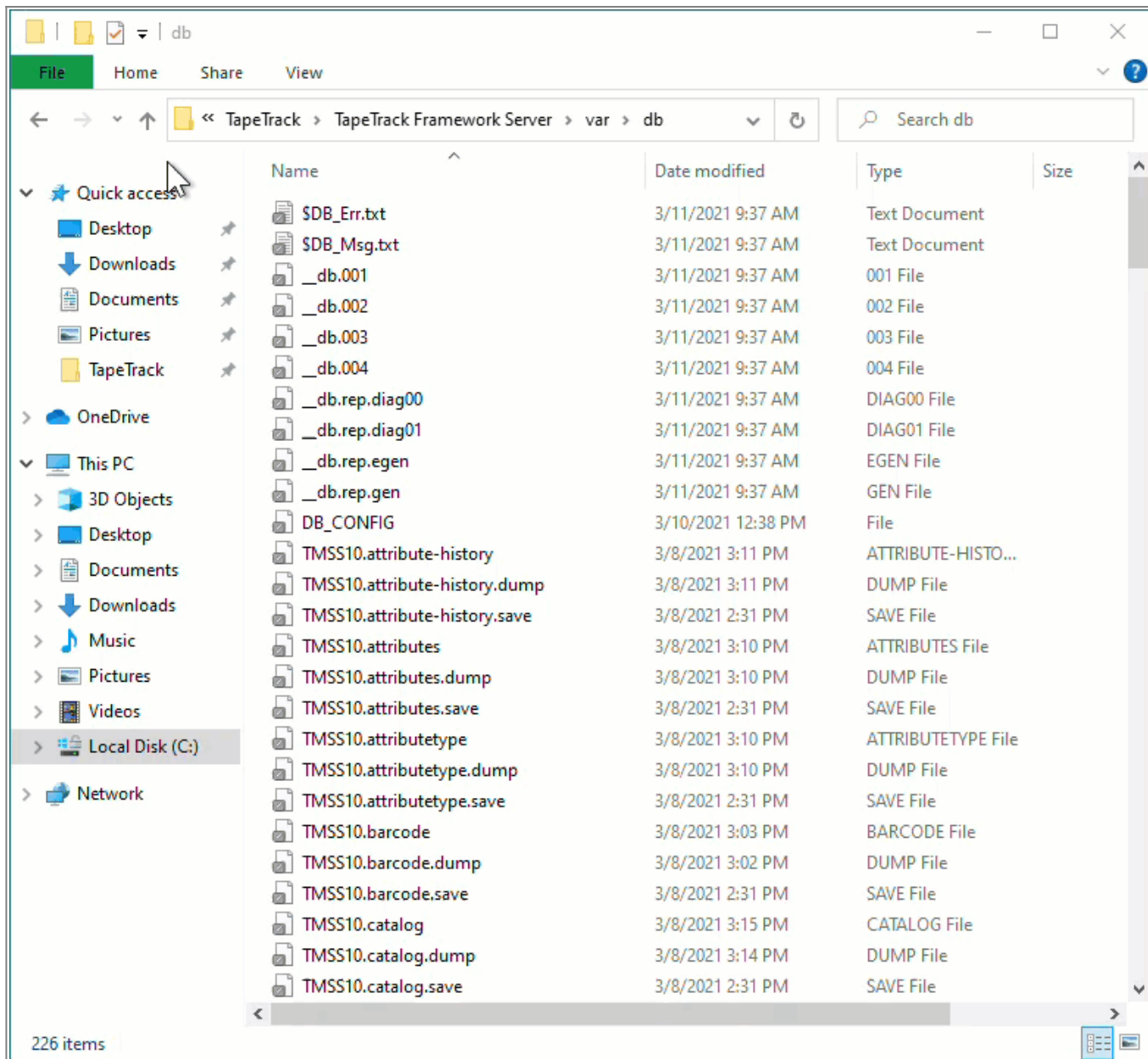
- Replace **master.tapetrack.com** with the domain name (or IP address) of **your** Master Server (your\_master\_IP\_address used as Master IP example).




```
*DB_CONFIG - Notepad
File Edit Format View Help
set_flags DB_LOG_AUTOREMOVE
#
# Set the log directory to an alternate directory
# |
set_lg_dir ..\dblogs
#
#
# Set Verbose Output
#
set_verbose DB_VERB_DEADLOCK
set_verbose DB_VERB_RECOVERY
set_verbose DB_VERB_REPLICATION
set_verbose DB_VERB_WAITSFOR
#
#rep_set_priority 1
#repmgr_site replicant-1.tapetrack.com 5010
#repmgr_site master.tapetrack.com 5010 db_local_site on db_group_creator on
#
# Optional settings
#
#rep_set_config DB_REP_CONF_BULK on
#rep_set_config DB_REP_CONF_AUTOINIT off
#
#
#rep_set_priority 0
#repmgr_site replicant-1.tapetrack.com 5010 db_local_site on
#repmgr_site master.tapetrack.com 5010 db_bootstrap_helper on
#rep_set_config DB_REP_CONF_BULK on
< >
Ln 45, Col 2 100% Windows (CRLF) UTF-8
```

Delete all, and only, the files starting with `_db.` and `db.rep..`. This step is made easier if you sort the files in ascending order of file names to group them all together.

These files will be rebuilt when the server is restarted using the information of the new master and replicant details.



 Ensure that the replication TCP/IP ports are open for inbound/outbound connections.

## Start The Servers

Start the TapeTrack service on the remote machine.

The replicant server will prepare the database for connection to the master server and move into Start Pending mode while waiting for the master server to respond.

The screenshot shows the 'TapeTrack Server Helper' interface. It features a table with two sections: 'Service' and 'Options'. The 'Service' section lists: Name (TMSS10SVC), Status (Start Pending), Process ID (4472), and Binary (C:\Program Files\TapeTrack\TapeTrack Framework Server\TMSS10Server.exe). The 'Options' section lists: Home Directory, Port (5000), Syslogd Server, Enable Replication (True), and Log File Name Type (0). Below the table is a 'Save Service Settings' button. At the bottom, there are three main control areas: 'Control Service' with 'Stop' and 'Start' buttons, 'Update Software' with a 'Download and Update' button, and 'Edit/View Files' with a 'DB\_CONFIG' button.

Service	
Name	TMSS10SVC
Status	Start Pending
Process ID	4472
Binary	C:\Program Files\TapeTrack\TapeTrack Framework Server\TMSS10Server.exe

Options	
Home Directory	
Port	5000
Syslogd Server	
Enable Replication	True
Log File Name Type	0

Promptly [Start the master TapeTrack Server](#).

The master server will now connect to the replicant server and load the database information across the connection. This may take time depending on the database size.

This screenshot shows the 'TapeTrack Server Helper' interface after the service has been stopped. The 'Service' section now shows: Name (TMSS10SVC), Status (Stopped), and Binary (C:\Program Files\TapeTrack\TapeTrack Framework Server\TMSS10Server.exe). The 'Options' section remains the same as in the previous screenshot. The 'Control Service' area now shows the 'Stop' button as active (shaded) and the 'Start' button as inactive. The 'Update Software' and 'Edit/View Files' areas are identical to the previous screenshot.

Service	
Name	TMSS10SVC
Status	Stopped
Binary	C:\Program Files\TapeTrack\TapeTrack Framework Server\TMSS10Server.exe

Options	
Home Directory	
Port	5000
Syslogd Server	
Enable Replication	True
Log File Name Type	0



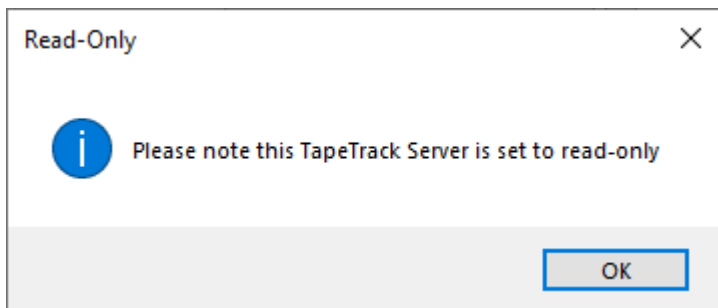
```
DB_Msg.txt - Notepad
File Edit Format View Help
2021-03-11 11:56:54 [850:968000][636/12292] REP_UNDEF: Read in gen 0
2021-03-11 11:56:54 [850:968000][636/12292] REP_UNDEF: Read in egen 1
2021-03-11 11:56:54 [850:968000][636/12292] REP_UNDEF: EID 0 is assigned for site 192.168.0.197:5010
2021-03-11 11:56:54 [850:968000][636/12292] REP_UNDEF: EID 1 is assigned for site 192.168.0.96:5010
2021-03-11 11:56:54 BDB2525 No log files found
2021-03-11 11:56:54 [850:984000][636/12292] REP_UNDEF: try join request to site site 192.168.0.96:5010
2021-03-11 11:56:54 [850:984000][636/12292] REP_UNDEF: connection established
2021-03-11 11:56:54 [851:15000][636/12292] REP_UNDEF: set membership for 192.168.0.197:5010 4 (was 0)
2021-03-11 11:56:54 [851:15000][636/12292] REP_UNDEF: set membership for 192.168.0.96:5010 4 (was 0)
2021-03-11 11:56:54 [851:15000][636/12292] REP_UNDEF: rep_start: Found old version log 19
2021-03-11 11:56:54 [851:15000][636/12292] CLIENT: var/db rep_send_message: msgv = 7 logv 19 gen = 0 ei
2021-03-11 11:56:54 [851:15000][636/15880] CLIENT: starting election thread
2021-03-11 11:56:54 [851:15000][636/12696] CLIENT: starting connector thread, eid 1
2021-03-11 11:56:54 [851:15000][636/11468] CLIENT: accepted a new connection
2021-03-11 11:56:54 [851:15000][636/12696] CLIENT: connecting to site 192.168.0.96:5010
2021-03-11 11:56:54 [851:15000][636/15880] CLIENT: var/db rep_send_message: msgv = 7 logv 19 gen = 0 ei
2021-03-11 11:56:54 [851:31000][636/12696] CLIENT: connection established
2021-03-11 11:56:54 [851:31000][636/11468] CLIENT: handshake from connecting site 192.168.0.96:5010 EID
2021-03-11 11:56:54 [851:31000][636/11468] CLIENT: handshake with no known master to wake election thre
2021-03-11 11:56:54 [851:31000][636/12696] CLIENT: connector thread is exiting
2021-03-11 11:56:56 [853:15000][636/15880] CLIENT: var/db rep_send_message: msgv = 7 logv 19 gen = 0 ei
2021-03-11 11:56:56 [853:15000][636/15896] CLIENT: var/db rep_process_message: msgv = 7 logv 19 gen = 1
2021-03-11 11:56:56 [853:15000][636/15896] CLIENT: var/db rep_send_message: msgv = 7 logv 19 gen = 0 ei
2021-03-11 11:56:56 [853:15000][636/16096] CLIENT: var/db rep_process_message: msgv = 7 logv 19 gen = 1
2021-03-11 11:56:56 [853:31000][636/16096] CLIENT: Election done; egen 1
2021-03-11 11:56:56 [853:31000][636/16096] CLIENT: Updating gen from 0 to 1 from master 1
2021-03-11 11:56:57 [853:31000][636/16096] CLIENT: egen: 2. rep version 7
2021-03-11 11:56:57 [853:31000][636/16096] CLIENT: No commit or ckp found. Truncate log.
Ln 40, Col 1 100% Windows (CRLF) UTF-8
```

Another way of testing the replication is correct and functioning is to [create a connection](#) to the replicant database through Tapemaster using the replicants IP address. Remember to use the replicants connection port (usually 5000) and not the replication data port (5010).



As this database is a replication of the master server, all user-ID's from the master are functional in the replicant server for login purposes.

When you connect to the replicant database you will receive a popup reminding you the server is Read Only. While you can view Customer, Media and Volume information, any attempted updates will be blocked by security protocols.



The replication communications are not encrypted so if replication is enabled you should ensure that all machines that are replicated are in a trusted network or connected via a secure VPN connection.

[Server replication troubleshooting](#)

## See Also

[Restoring replicant server to master server status](#)

From:  
<https://rtfm.tapetrack.com/> - **TapeTrack Documentation**

Permanent link:  
<https://rtfm.tapetrack.com/server/replication?rev=1615428398>

Last update: **2025/01/21 22:07**

