

# Decommissioning Server Replication

## DB Config File

On the server that your master Framework Server is installed, navigate in Windows File Explorer to the TapeTrack Installation folder (default = C:\Program Files\TapeTrack\TapeTrack Framework Server\var\db) and open the file DB\_CONFIG with a text editor such as Notepad.

## Edit Config File

Scroll to the bottom of the config file until you see the replication code section

```
rep_set_priority 1
repmgr_site replicant-1.tapetrack.com 5010
repmgr_site master.tapetrack.com 5010 db_local_site on db_group_creator on
```

Add a hash tag to the start of the lines of code to convert them to comments so they will be skipped when TapeTrack loads the config file.

```
#rep_set_priority 1
#repmgr_site replicant-1.tapetrack.com 5010
#repmgr_site master.tapetrack.com 5010 db_local_site on db_group_creator on
```

Save the file, ensuring that it saves as DB\_CONFIG.cfg and not .txt

## Restart The Server

### Starting and Stopping the Service

When performing tasks such as server maintenance it may be necessary to manually start and stop the TapeTrack Service.

#### Windows

#### DOS Prompt

From a DOS prompt started as Administrator you can run the following commands:

```
Microsoft Windows [Version 10.0.17134.523]
(c) 2018 Microsoft Corporation. All rights reserved.
```

```
C:\WINDOWS\system32>net stop tmss10svc
The TapeTrack Media Management Framework Server service is stopping.....
The TapeTrack Media Management Framework Server service was stopped
successfully.

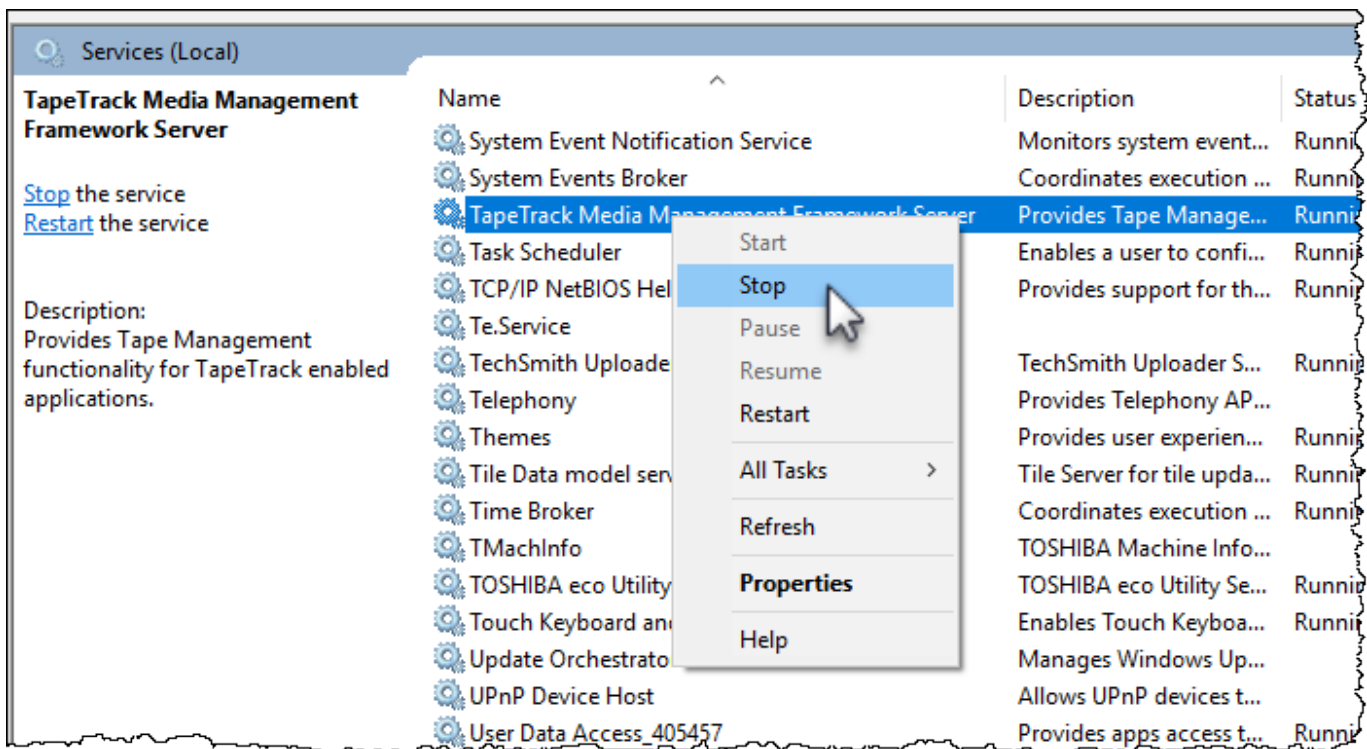
C:\WINDOWS\system32>
```

```
Microsoft Windows [Version 10.0.17134.523]
(c) 2018 Microsoft Corporation. All rights reserved.

C:\WINDOWS\system32>net start tmss10svc
The TapeTrack Media Management Framework Server service is starting.....
The TapeTrack Media Management Framework Server service was started
successfully.

C:\WINDOWS\system32>
```

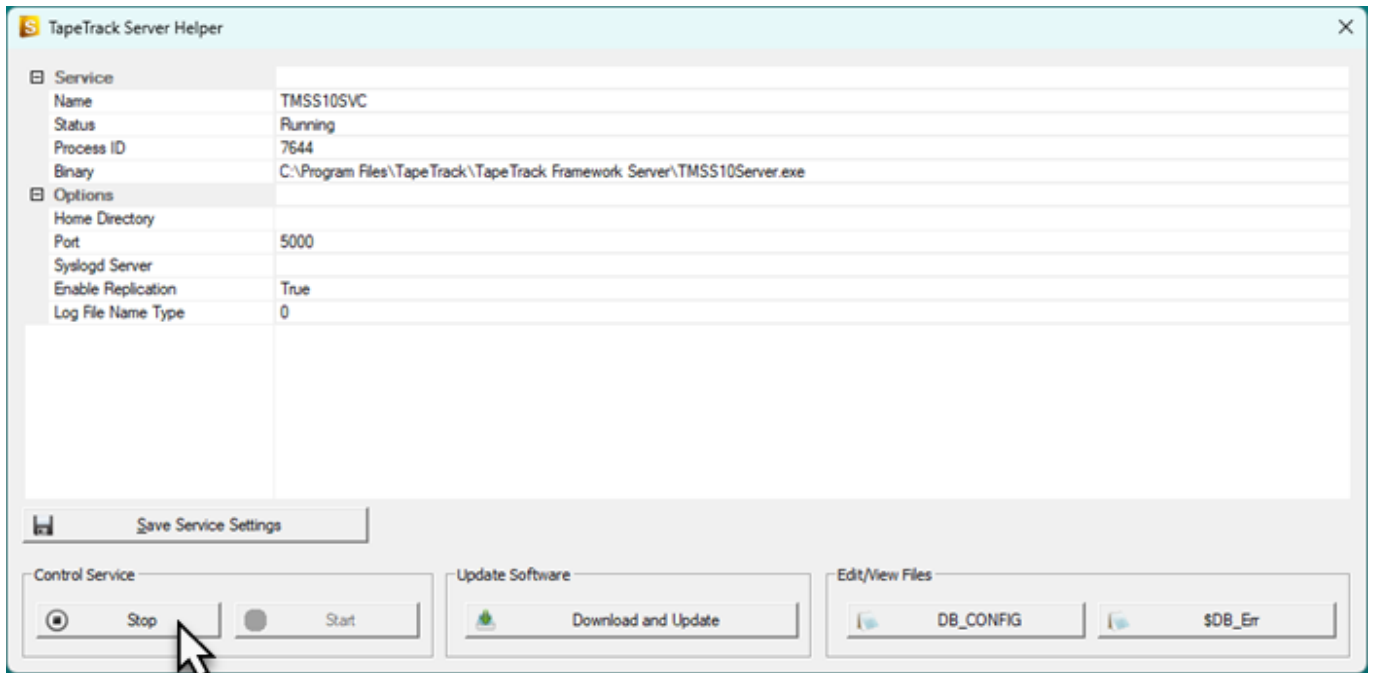
### Windows Service Manager



### TapeTrack Server Helper

TapeTrack Server Helper can be found in th TapeTrack installation directory, default install location is C:\Program Files\TapeTrack\TapeTrack Framework Server\TMSS10ServerHelper.exe

Run the TapeTrack Server Helper App and click the Start or Stop button in the **Control Service** Section.



## Linux

```
[root@gazillabyte ~]# service tapetrack stop
Stopping tapetrack (via systemctl): [ OK ]
[root@gazillabyte ~]# service tapetrack start
Starting tapetrack (via systemctl): [ OK ]
```

2017/06/06 17:27 · Gerard Nicol

From: <https://rtfm.tapetrack.com/> - **TapeTrack Documentation**

Permanent link: [https://rtfm.tapetrack.com/server/replication\\_decomission?rev=1644886349](https://rtfm.tapetrack.com/server/replication_decomission?rev=1644886349)

Last update: **2025/01/21 22:07**

