

# Starting and Stopping the Service

When performing tasks such as server maintenance it may be necessary to manually start and stop the TapeTrack Service.

## Windows

### DOS Prompt

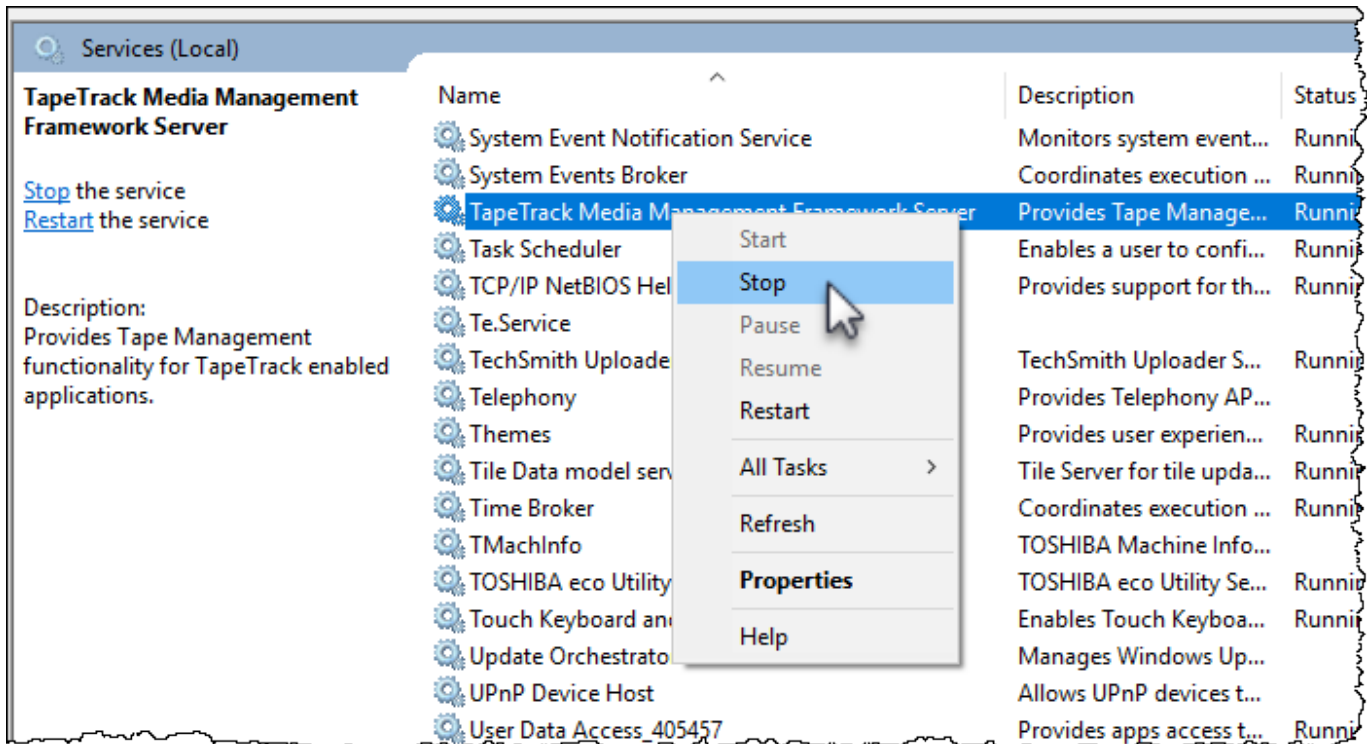
From a DOS prompt started as Administrator you can run the following commands:

```
Microsoft Windows [Version 10.0.14393]
(c) 2016 Microsoft Corporation. All rights reserved.

C:\WINDOWS\system32>net stop TMSS10SVC
The TapeTrack Media Management Framework Server service is stopping.
The TapeTrack Media Management Framework Server service was stopped
successfully.

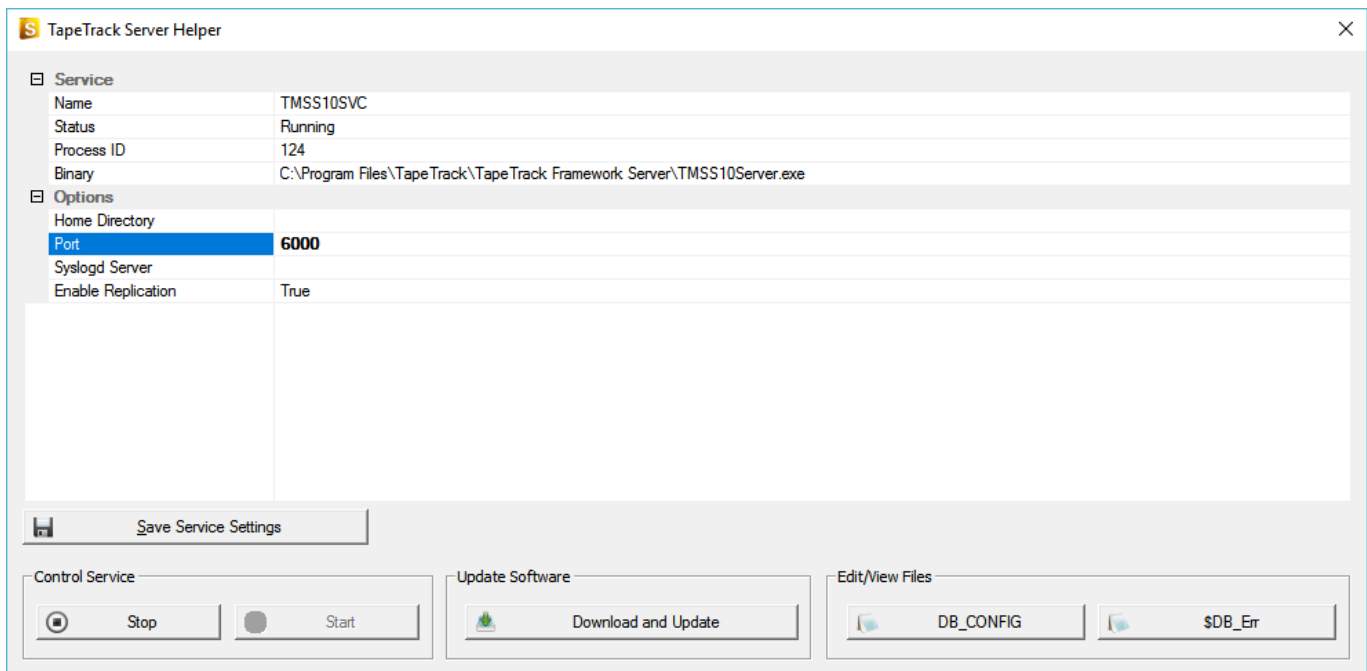
C:\WINDOWS\system32>net start TMSS10SVC
The TapeTrack Media Management Framework Server service is starting.
The TapeTrack Media Management Framework Server service was started
successfully.
```

### Windows Service Manager



## TapeTrack Server Helper

Run the TapeTrack Server Helper App and press the Start or Stop Button in the Server Control Section.



## Linux

```
[root@gazillabyte ~]# service tapetrack stop
Stopping tapetrack (via systemctl): [ OK ]
[root@gazillabyte ~]# service tapetrack start
```

Starting tapetrack (via systemctl):

[ OK ]

From:

<https://rtfm.tapetrack.com/> - **TapeTrack Documentation**

Permanent link:

[https://rtfm.tapetrack.com/server/start\\_stop?rev=1496771787](https://rtfm.tapetrack.com/server/start_stop?rev=1496771787)

Last update: **2025/01/21 22:07**

