

Starting and Stopping the Service

When performing tasks such as server maintenance it may be necessary to manually start and stop the TapeTrack Service.

Windows

DOS Prompt

From a DOS prompt started as Administrator you can run the following commands:

```
Microsoft Windows [Version 10.0.17134.523]
(c) 2018 Microsoft Corporation. All rights reserved.

C:\WINDOWS\system32>net stop tmssl0svc
The TapeTrack Media Management Framework Server service is stopping.....
The TapeTrack Media Management Framework Server service was stopped
successfully.

C:\WINDOWS\system32>
```

```
Microsoft Windows [Version 10.0.17134.523]
(c) 2018 Microsoft Corporation. All rights reserved.

C:\WINDOWS\system32>net start tmssl0svc
The TapeTrack Media Management Framework Server service is starting.....
The TapeTrack Media Management Framework Server service was started
successfully.

C:\WINDOWS\system32>
```

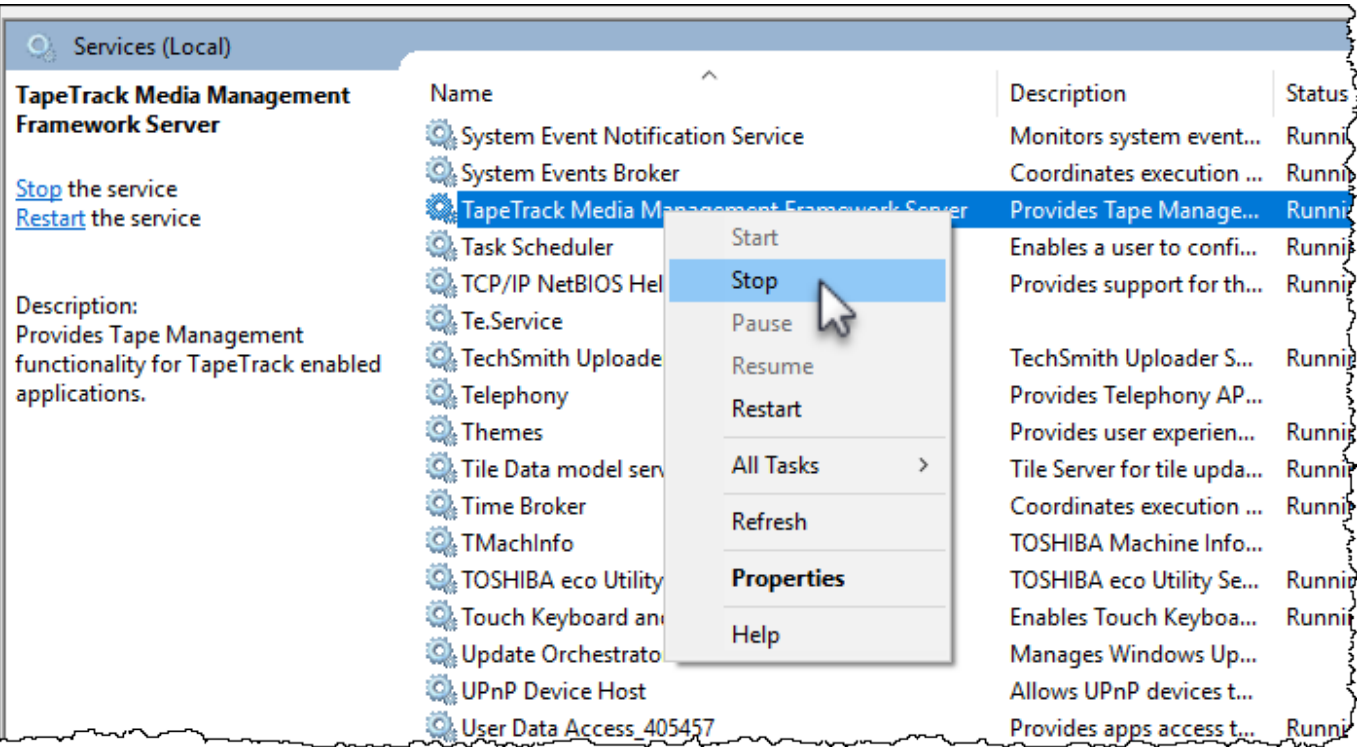
```
Administrator: Command Prompt

C:\WINDOWS\system32>net stop TMSS10svc
The TapeTrack Media Management Framework Server service is stopping..
The TapeTrack Media Management Framework Server service was stopped successfully.

C:\WINDOWS\system32>net start TMSS10svc
The TapeTrack Media Management Framework Server service is starting.
The TapeTrack Media Management Framework Server service was started successfully.

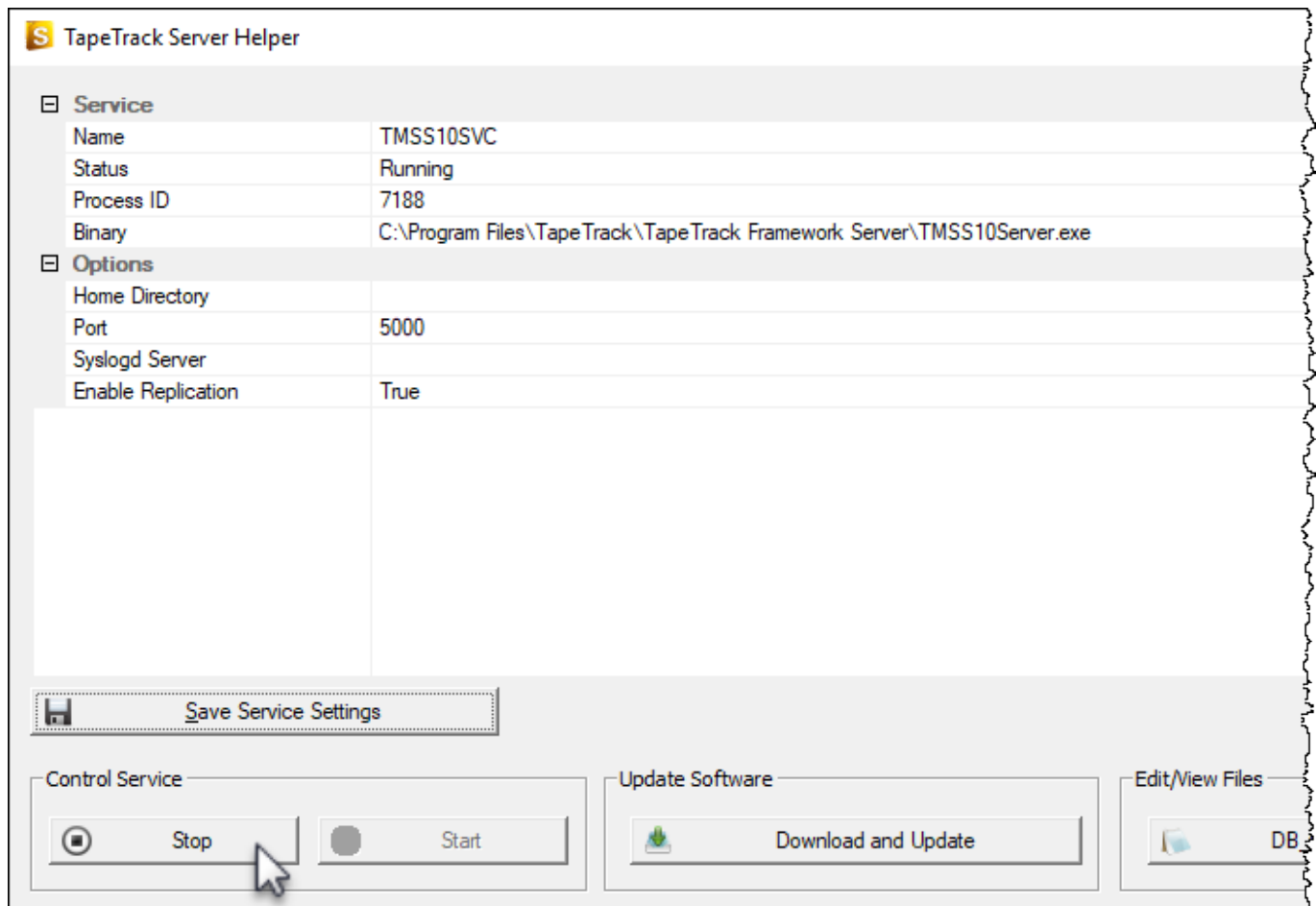
C:\WINDOWS\system32>
```

Windows Service Manager



TapeTrack Server Helper

Run the TapeTrack Server Helper App and click the Start or Stop button in the **Server Control Section**.



Linux

```
[root@gazillabyte ~]# service tapetrack stop
Stopping tapetrack (via systemctl):          [ OK ]
[root@gazillabyte ~]# service tapetrack start
Starting tapetrack (via systemctl):          [ OK ]
```

From:
<https://rtfm.tapetrack.com/> - **TapeTrack Documentation**

Permanent link:
https://rtfm.tapetrack.com/server/start_stop?rev=1547420086

Last update: **2025/01/21 22:07**

