

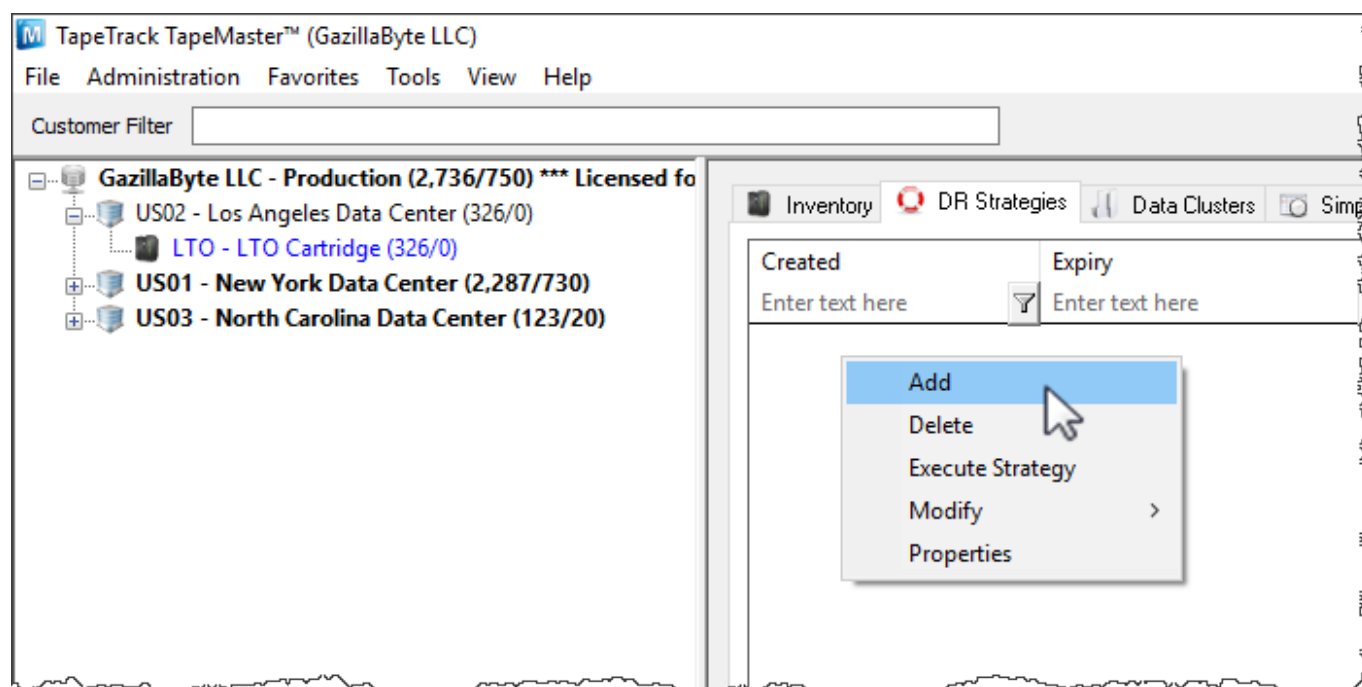
Adding and Maintaining Disaster Recovery Strategies

Overview

A Disaster Recovery Strategy, referred to in TapeTrack as a “DR Strategy”, is a list of [Volumes](#) necessary to restore a system back to a given time in the event of catastrophic system failure. Typically, these DR Strategies are automated through TapeTrack Sync's integration with your back-up software; however, they can be manually created as well.

Creating a DR Strategy

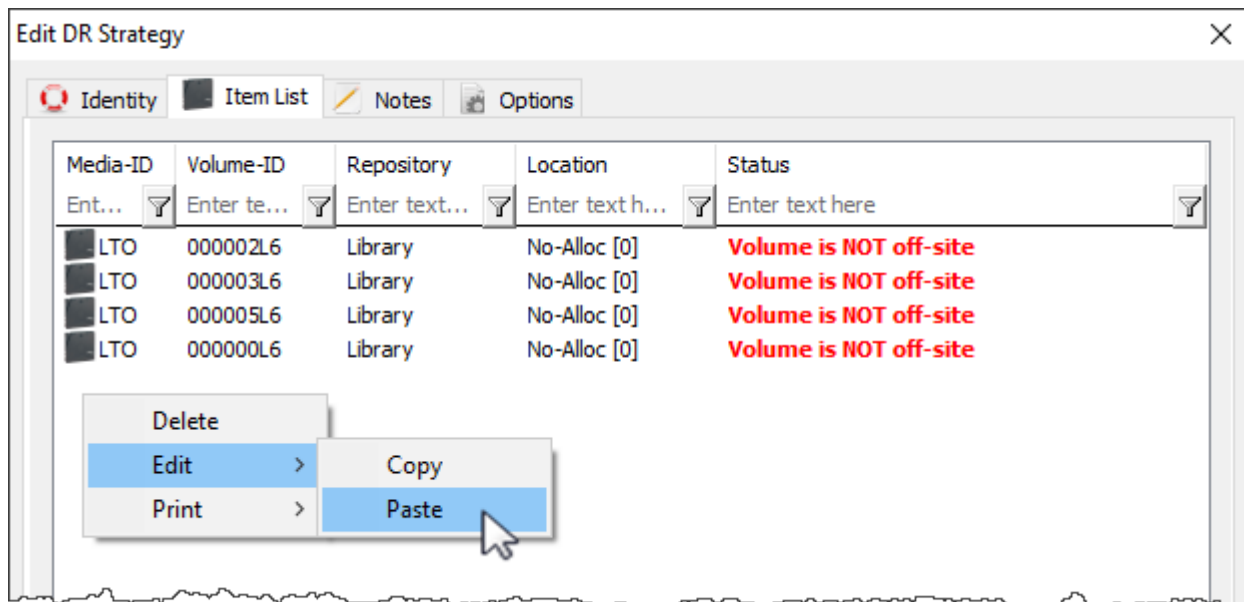
DR Strategies can be manually created in the DR Strategies Administration Tab by: Right-clicking and selecting “Insert” or by pressing the “Insert” key on the keyboard. This will launch the DR Strategy Creation window.



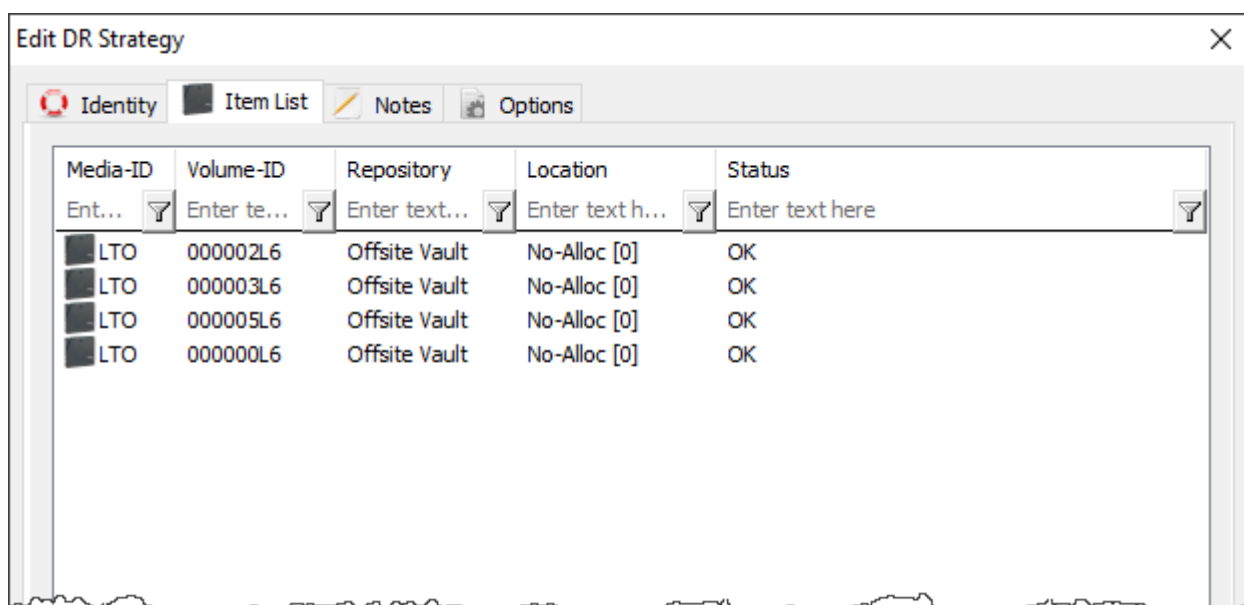
Identity

The DR Strategy Creation window will prompt for a description and provide tabs that offer the ability to take notes regarding a DR Strategy and also some various options. A full summary of these options can be found under the Edit DR Strategy page.

To create a DR Strategy, enter a description and click “Save”. The new DR Strategy will appear in the DR Strategies Administration Tab.



Once the [volumes](#) are moved to an off-site [Repository](#), the DR Strategy will gain a status of “OK”.



Notes

The Notes Tab provides an area to write notes about a DR Strategy. This can include emergency contacts, plans, instructions, etc.

Options

The Options Tab provides four different options that govern how the DR Strategy behaves.

- **Depreciated:** When a DR Strategy is depreciated, it is considered no longer active. This means it no longer affects the [Library Health](#) score but has not yet been deleted.
- **Expiry:** The Expiry date sets the date for when the DR Strategy is considered no longer relevant or useful.
- **Target Repository:** The Target Repository is the [Repository](#) that [Volumes](#) in the Item List are

sent to when the DR Strategy is executed.

- **Latency:** Latency sets a certain number of minutes before the DR Strategy is included in the [Library Health](#) Score. Since a DR Strategy is considered to have errors whenever a [Volume](#) in the Item List is not in a [Repository](#) set as off-site, the latency allows time for [Volumes](#) to arrive at the off-site [Repository](#) before affecting [Library Health](#).

Edit DR Strategy

Identity

Item List

Notes

Options

Depreciated	False
Expiry	Tuesday, April 03, 2018
Target Repository	LIBR
Latency	480

From:

<https://rtfm.tapetrack.com/> - TapeTrack Documentation

Permanent link:

<https://rtfm.tapetrack.com/subsystem/disasterrecovery?rev=1508983668>

Last update:

2025/01/21 22:07

