

Adding Registry Key Lite Start-up

To confirm whether Lite is executing correctly you can enable a popup that will display at the beginning of the software execution.

If you don't see the popup displayed, the software is being blocked by something on your computer system. Contact your system administrator to diagnose what is blocking Lite from executing.

If you see the popup displayed, Lite has entered the execution phase.

Lite Start-up Registry Key

Creating Registry Key File



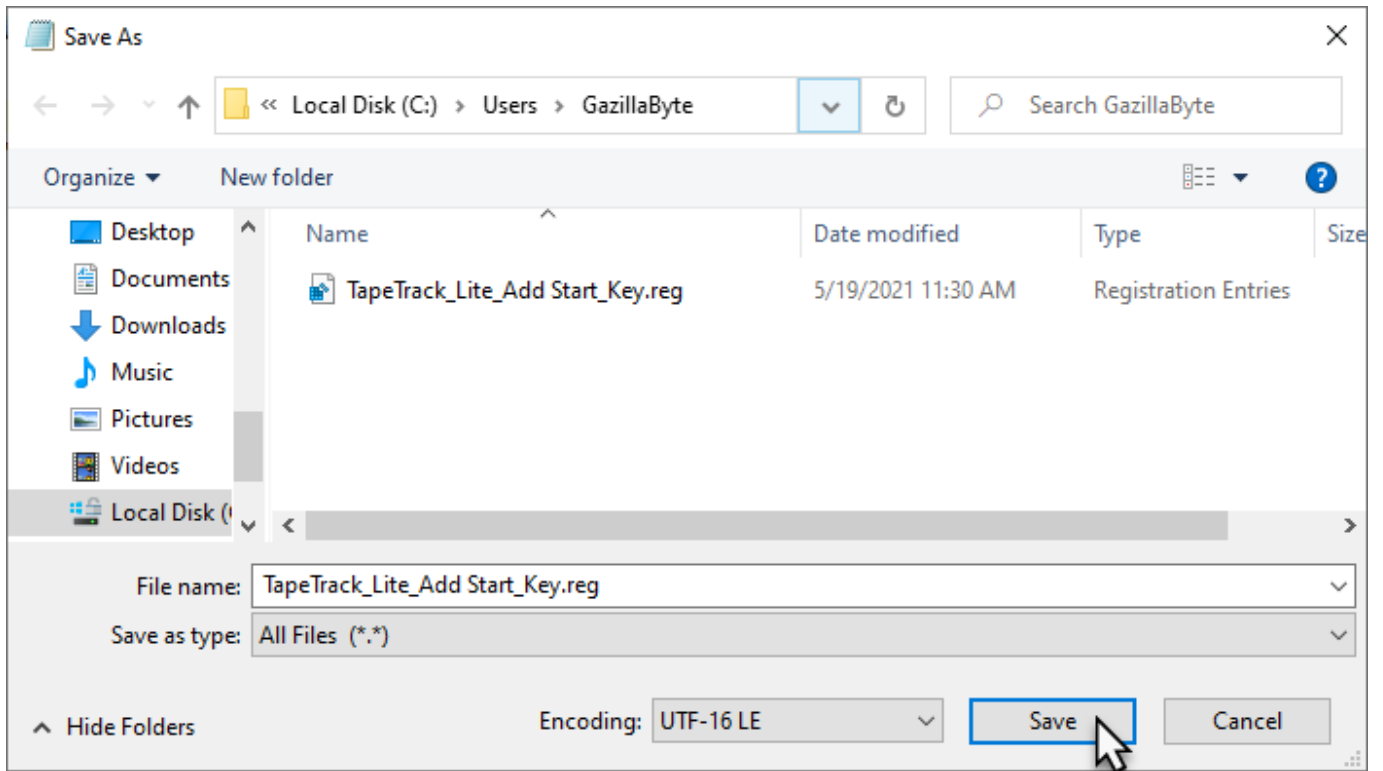
You will need admin rights to edit the registry file.

To add the registry key StartMessage automatically to your registry without the need to use regedit, copy the code below into Notepad (or other plain text editor).

```
Windows Registry Editor Version 5.00
```

```
[HKEY_CURRENT_USER\SOFTWARE\GazillaByte\TMSSLite\Options]  
"StartMessage"="TapeTrack Lite has initialised, click OK to continue"
```

Save this file with a .reg extension, eg TapeTrack_Lite_Add_Start_Key.reg to a known location on your computer.



Adding Registry Key

Locate the file and double click to execute the code to add the registry key.

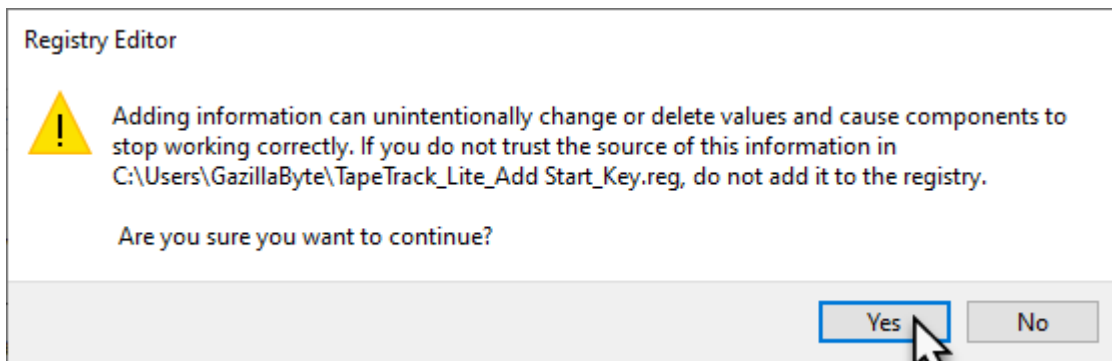
You will be presented with a popup User Account Warning asking Do you want the app to make changes to your device?, click Yes to continue.

You will then be presented with a warning from the Registry Editor:

Adding information can unintentionally change or delete values and cause components to stop working correctly.

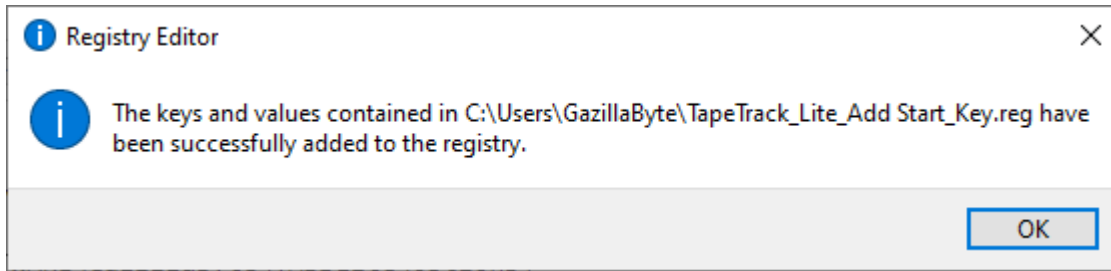
If you do not trust the source of this information in C:\Users\diff1\Desktop\test_add_start.reg, do not add it to the registry.

Are you sure you want to continue?



Click Yes to continue.

The Registry Editor will add the registry key and display a popup informing you the key has been added.



Click OK to close the popup.

Checking Lite Execution

Run Lite, the popup will be displayed as the program executes displaying the set message.



Click OK to close the popup and continue starting Lite.

From:
<https://rtfm.tapetrack.com/> - **TapeTrack Documentation**

Permanent link:
https://rtfm.tapetrack.com/technote/add_reg_key/lite_start?rev=1621391526

Last update: **2025/01/21 22:07**

