

# Adjusting Slot Allocation

From time to time you may need to adjust a [Customers Slot](#) allocation based on increased or decreased [Volume](#) numbers.

## Increasing Slot Allocation

Slotting allocation can be increased by either adding extra [zones](#) to the [Repository](#), or by increasing the [Slot](#) allocation within the currently assigned [Zones](#).

See [Maintaining A Zone](#) to add or increase Zone allocation.

## Decreasing Slot Allocation

### Removing Empty Slots

Decreasing [Slot](#) allocation for a [Customer](#) can be as simple as reducing the [Slots](#) allocated through the [Slot Edit Range Information](#) window, as long as the [Slots](#) being removed are sequential, unoccupied and from the end of the last Zone allocated.

Removing Slot allocation using this method must be from the last allocated Zone (if multiple Zones are assigned) from the high end of the Zone. The reason for this is if there are three Zones allocated, each with 100 Slots, TapeTrack interprets these as one continual Slot arrangement, 1 to 100 in Zone 1, 101 to 200 in Zone 2 and 201 to 300 in Zone 3. Reducing the Slot allocation from 300 to 250 by removing the last 50 Slots from Zone 3 keeps all lower Slotted tapes in the same number Slot. So a tape in Slot 248 would still in the same place (Zone 3, 48th slot). If you were to remove the 50 Slots in Zone 2, Zone 1 would still be Slots 1 to 100, Zone 2 would now be Slots 101 to 150 and Zone 3 would be 151 to 250, essentially putting Slot 248 now in the 98th Slot in Zone 3. This would put all Volumes in Zone 3 out 50 Slots in allocation vs physical location.

### Removing Occupied Slots

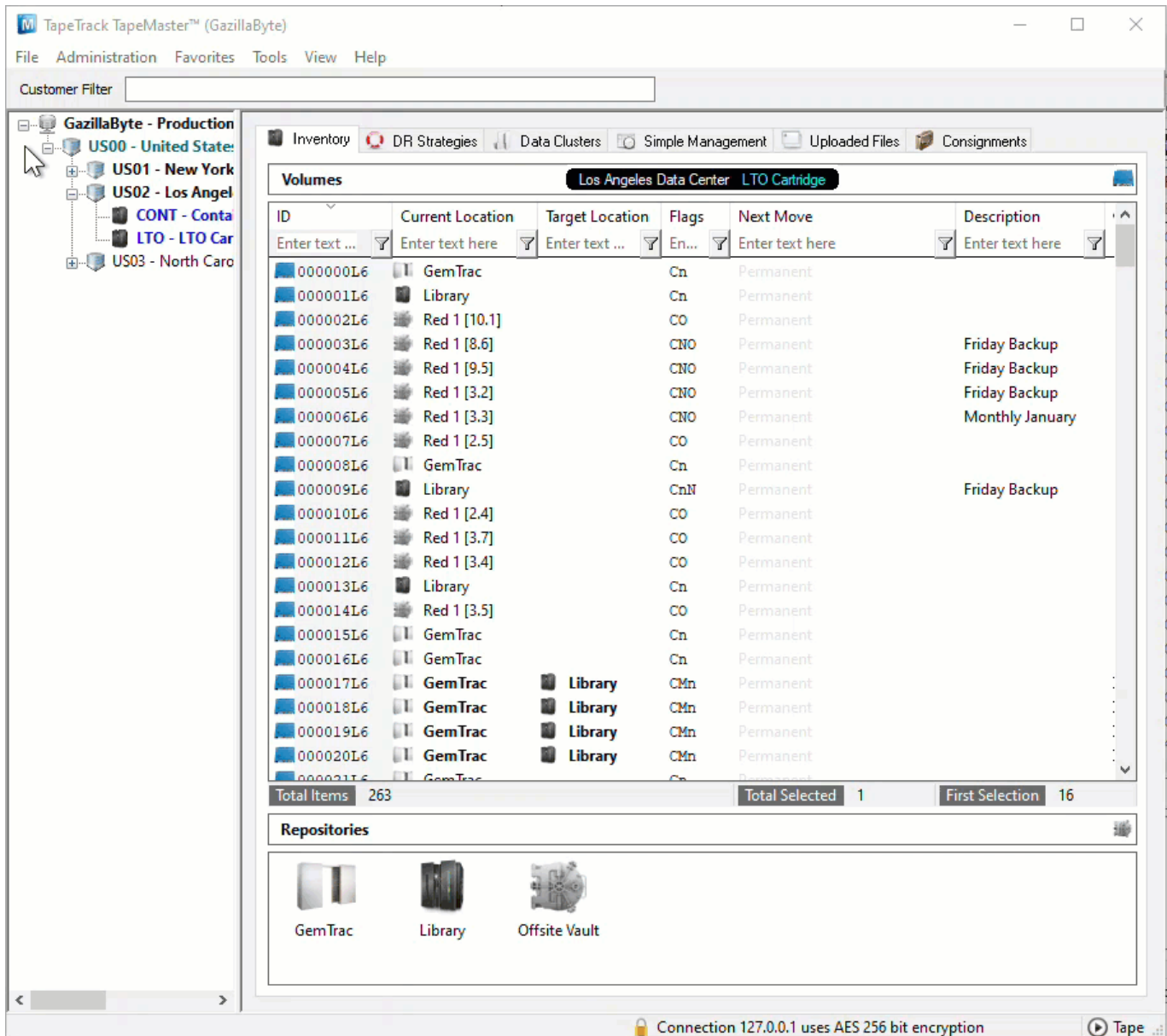
If the [Slots](#) to be removed from allocation are currently occupied, completely or partially, the [Volumes](#) will need to be reslotted before this can be accomplished.



You must have enough empty [Slots](#) under the highwater mark to accommodate any [Volumes](#) currently slotted above the mark.

To remove these [Volumes](#) from the occupied [Slots](#):

- Right click the required [Repository](#) and select [Properties](#), or double click the [Repository](#), and click on the [Options](#) tab.



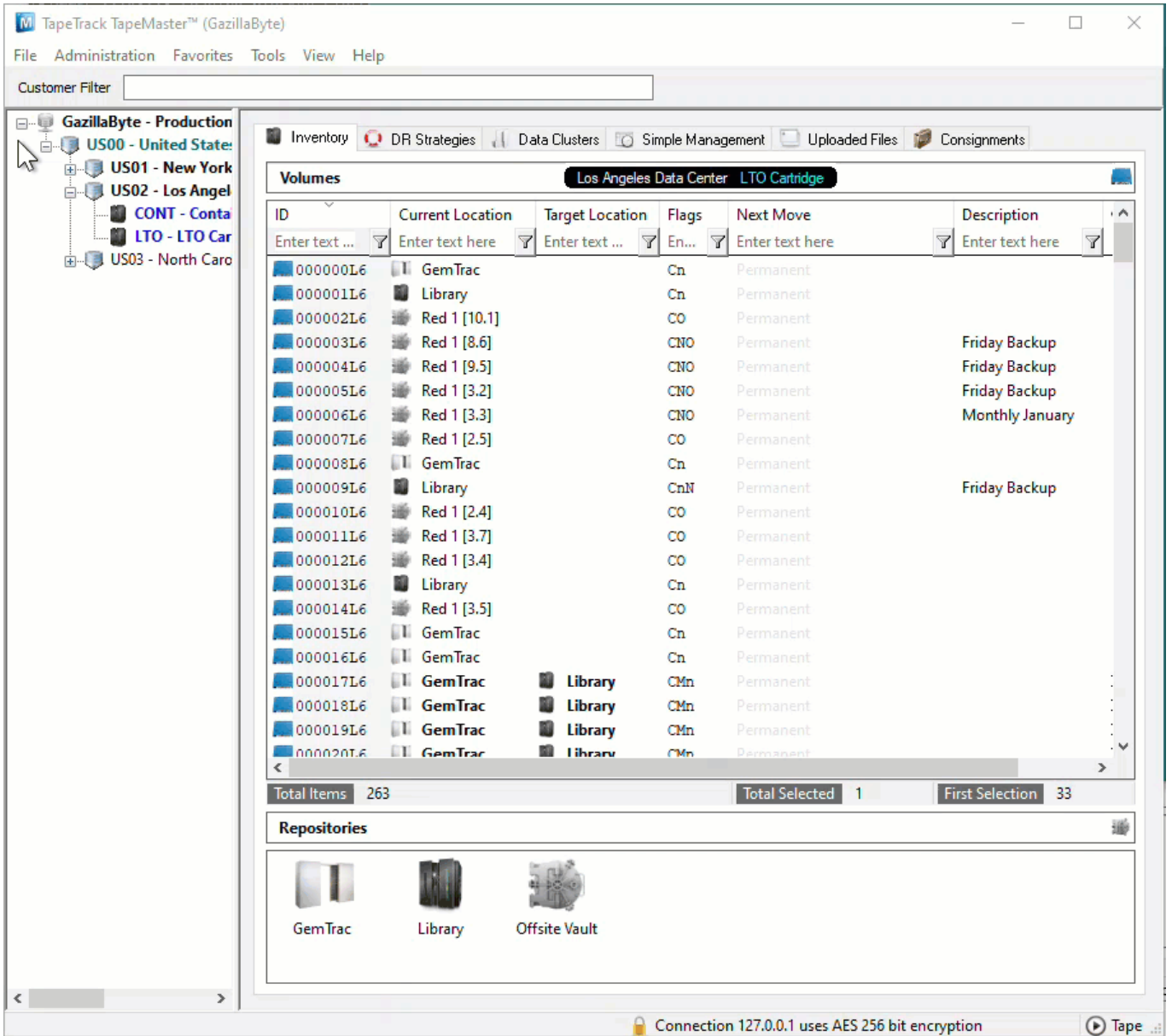
Select the Options tab from the Repository Properties.

Set Highwater Offset to the number you wish to lower Slots allocation by. For example if you currently have 100 Slots allocated and wish to reduce the allocation to 60 Slots set the highwater offset to 40 (100 - 60).



Run the slotting program [TMSS10SlotAllocation](#) to re-slot any [Volumes](#) above the highwater mark. If you have Slotting scheduled you can let the program execute on the schedule, or manually run it if required.

Click in the Inventory window of TapeMaster and Press F5 to refresh the display, any Volumes Slotted above the Highwater Offset will now be in a move to a lower Slot.



- Decrease the [slot allocation](#).



- Adjust the **Highwater Offset** back to zero to enable use of all allocated [Slots](#).



From: <https://rtfm.tapetrack.com/> - **TapeTrack Documentation**

Permanent link: [https://rtfm.tapetrack.com/technote/adjusting\\_slot\\_allocation?rev=1638838197](https://rtfm.tapetrack.com/technote/adjusting_slot_allocation?rev=1638838197)

Last update: **2025/01/21 22:07**

