

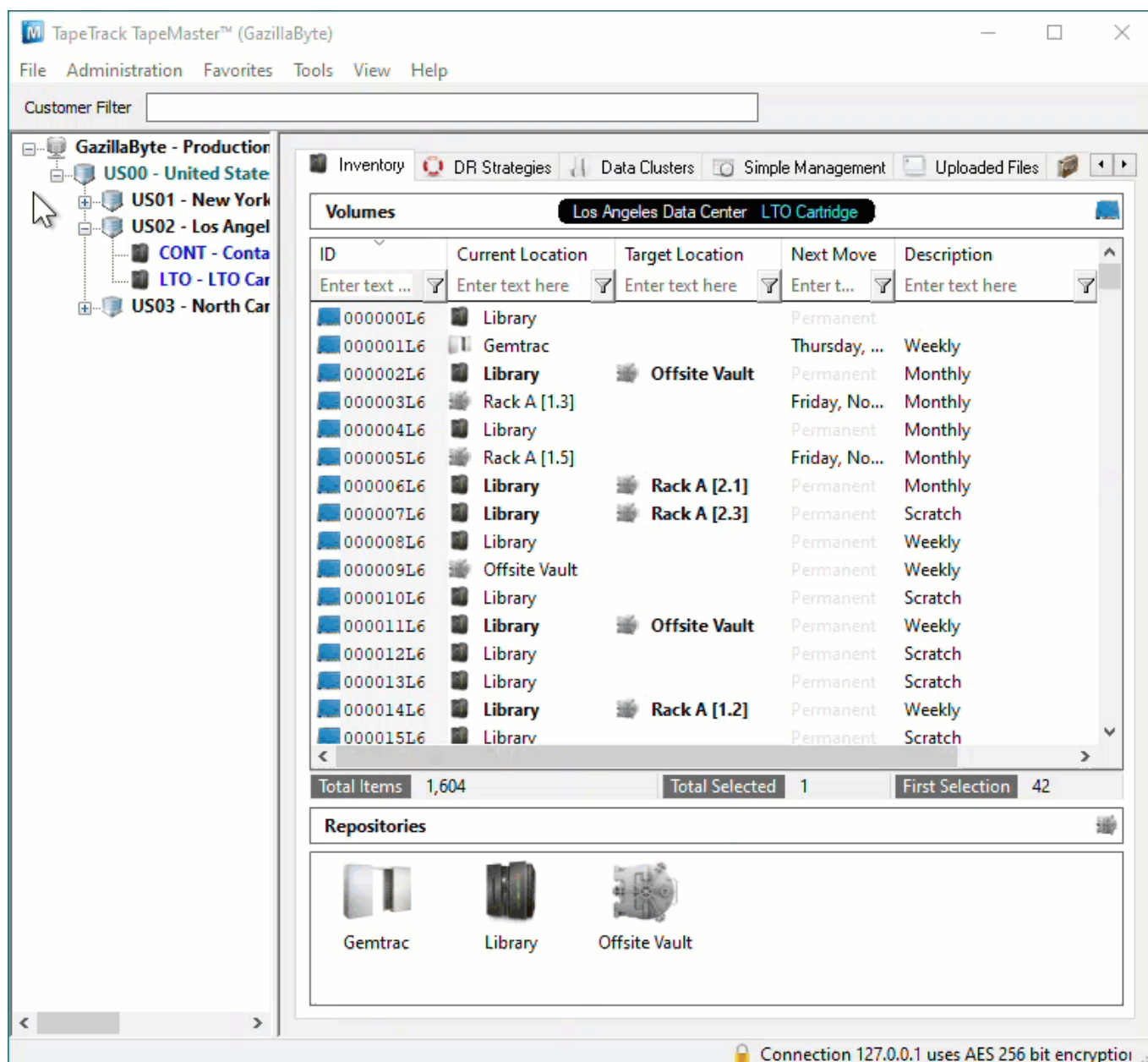
Assign Slot using Volume Properties Target Repository Tab

Volumes in a move to or currently confirmed in to the Target Repository you will only need to have the Slot number set.

Volumes not in a move to or currently confirmed in to the Target Repository you will need both the Target Repository as well as the Slot number set.

Opening Volume Properties

Double click the required Volume or right click and select Properties and select the Target Repository tab.



Set Repository And Slot Allocation

From the Volume Properties window select the Target Location tab.

Setting Slot

Click in the field Slot under the section Virtual Location to open the Slot Selection window.

Select an unallocated Slot and click OK to close the window.

Click Save on the Volume Properties window to commit the updated data.

Setting Repository And Slot

Click in the field Repository under the section Virtual Location and select the required Repository.

Click Yes to the Repository Changed dialog to open the Slot Selection window.

Select an unallocated Slot and click OK to close the window.

Edit Volume: 000000L6

Datasets Attributes VeriScore™ DR Strategies Options Catalog

Identity Target Location Current Location Scanned Location Notes History

- Virtual Location
 - Repository Library
- Physical Location
 - Zone No-Alloc
 - Slot 0
- Update Statistics
 - When
 - Date Tuesday, August 10, 2021 (1 days ago)
 - Time 11:13:22
 - UTC Offset 600 minutes
 - Time at source Tuesday, August 10, 2021 - 11:13:22
 - Time Zone AUS Eastern Standard Time
 - From
 - Machine Name 127.0.0.1 (GazillaByte)
 - Details
 - Connection Count 2,610
 - First Connection Sunday, August 04, 2019 - 16:44:36
 - Last Connection Thursday, August 12, 2021 - 10:36:28
 - Interface TapeTrack TapeMaster
 - Operating System Windows
- As
 - User-ID doco
 - User Name doco

Save Cancel Help

Click Save on the Volume Properties window to commit the updated data.

From: <https://rtfm.tapetrack.com/> - **TapeTrack Documentation**

Permanent link: https://rtfm.tapetrack.com/technote/assign_slot_volume_properties?rev=1628730299

Last update: **2025/01/21 22:07**

