

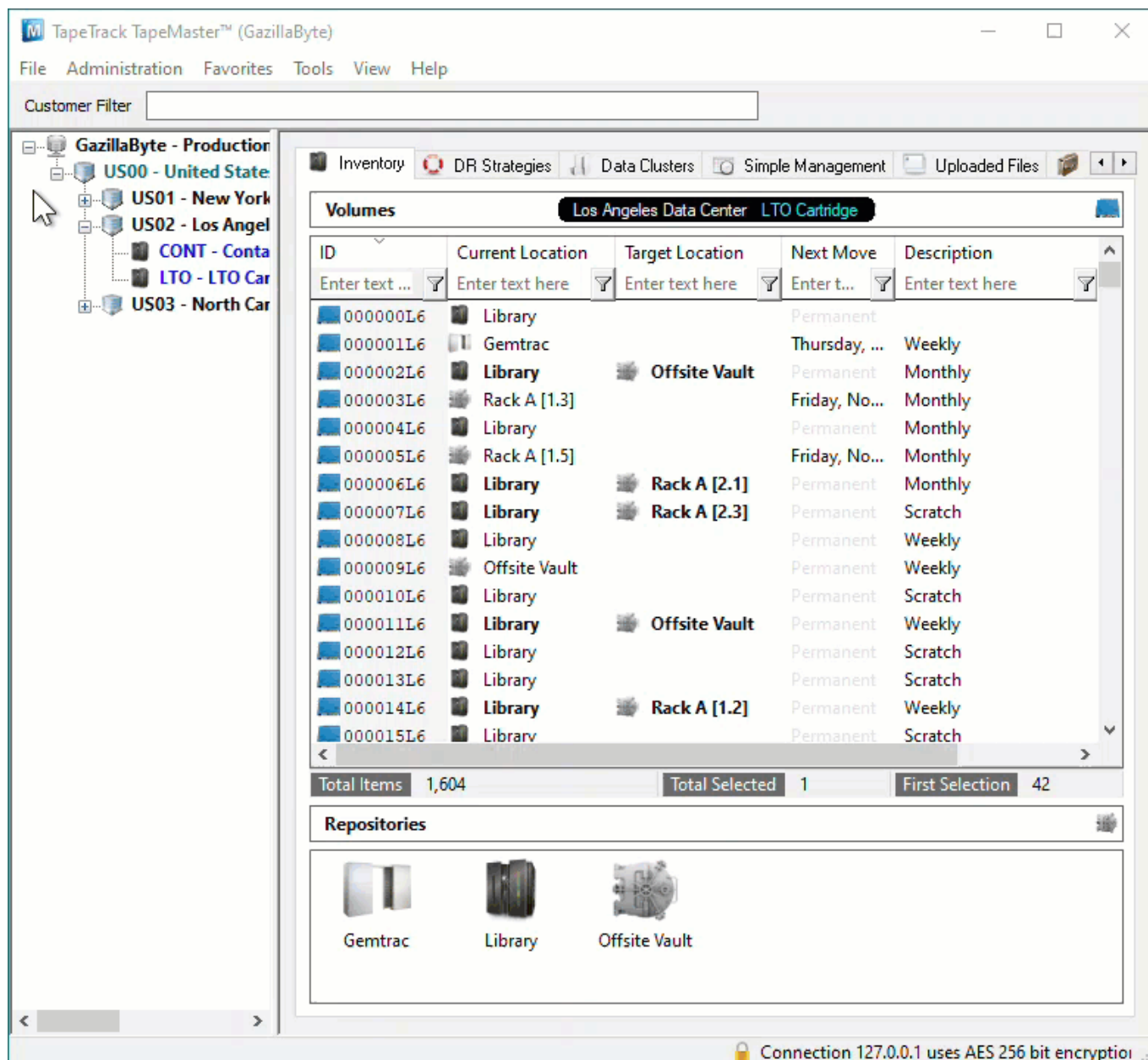
Assign Slot using Volume Properties Target Repository Tab

Volumes in a move to or currently confirmed in to the Target Repository you will only need to have the Slot number set.

Volumes not in a move to or currently confirmed in to the Target Repository you will need both the Target Repository as well as the Slot number set.

Opening Volume Properties

Double click the required Volume or right click and select Properties and select the Target Repository tab.



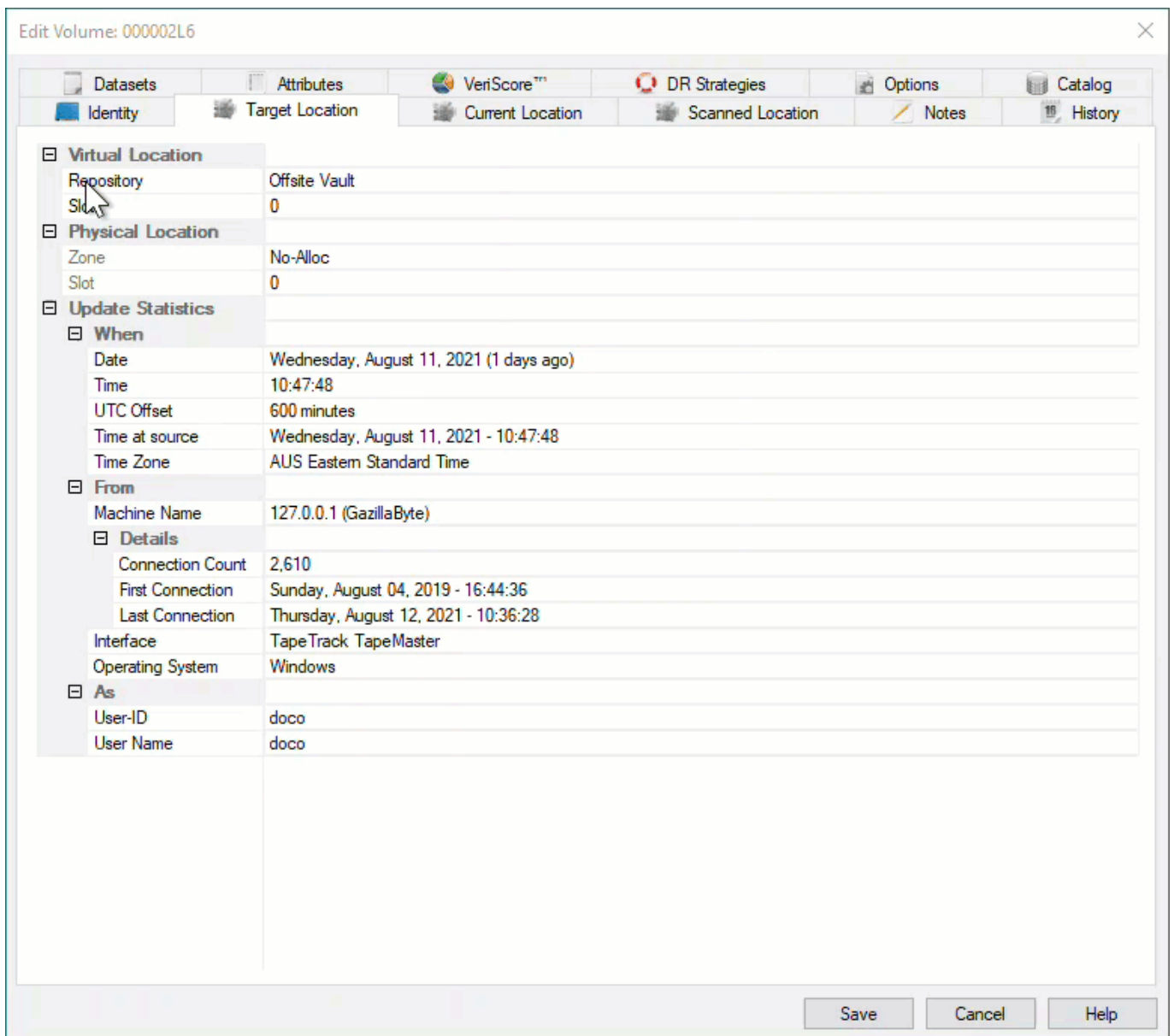
Set Repository And Slot Allocation

From the Volume Properties window select the Target Location tab.

Setting Slot

Click in the field Slot under the section Virtual Location to open the Slot Selection window.

Select an unallocated Slot and click OK to close the window.



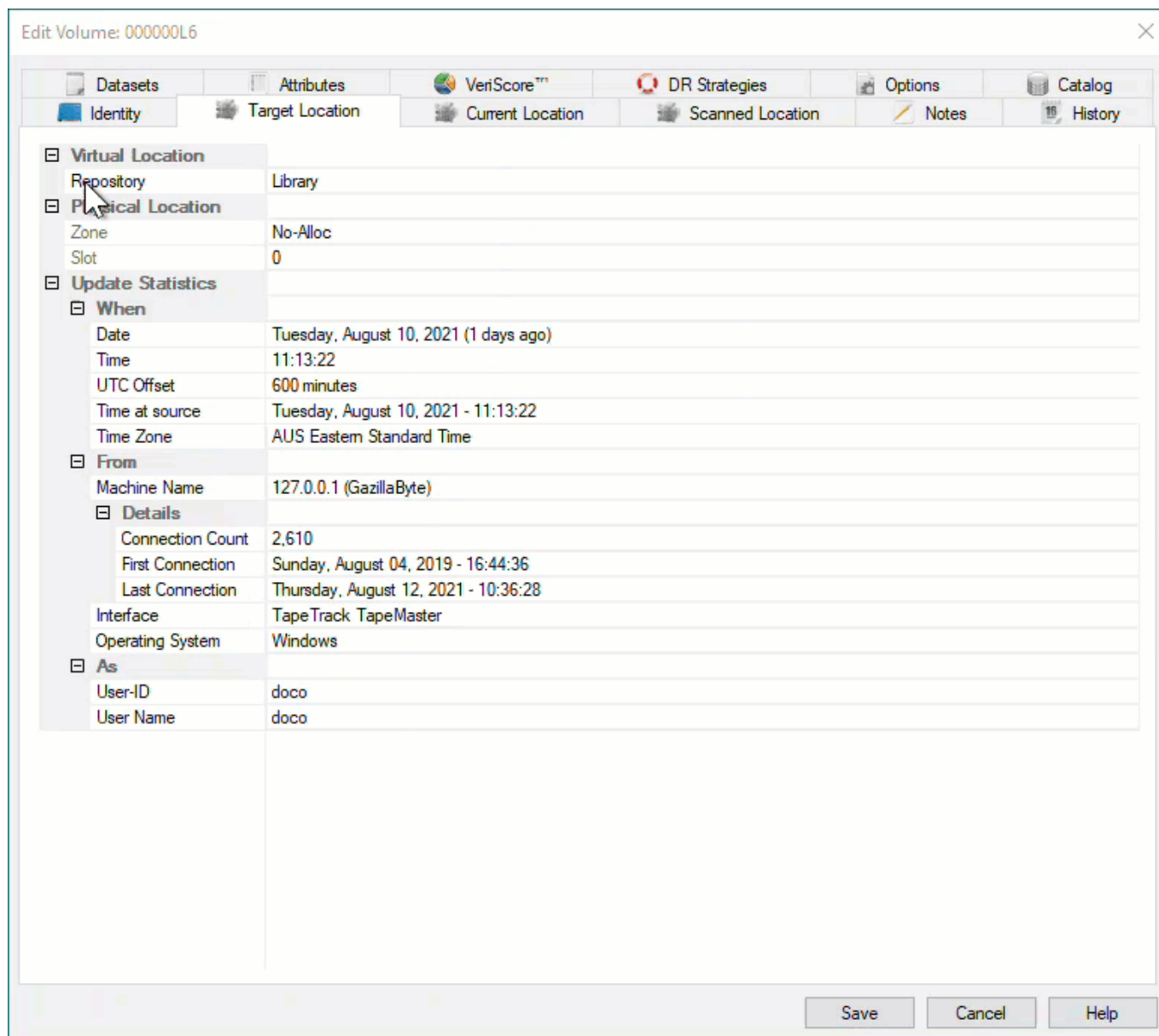
Click Save on the Volume Properties window to commit the updated data.

Setting Repository And Slot

Click in the field Repository under the section Virtual Location and select the required Repository.

Click Yes to the Repository Changed dialog to open the Slot Selection window.

Select an unallocated Slot and click OK to close the window.



Click Save on the Volume Properties window to commit the updated data.

From: <https://rtfm.tapetrack.com/> - **TapeTrack Documentation**

Permanent link: https://rtfm.tapetrack.com/technote/assign_slot_volume_properties?rev=1628730316

Last update: **2025/01/21 22:07**

