

Assign Slot using Volume Properties Target Repository Tab

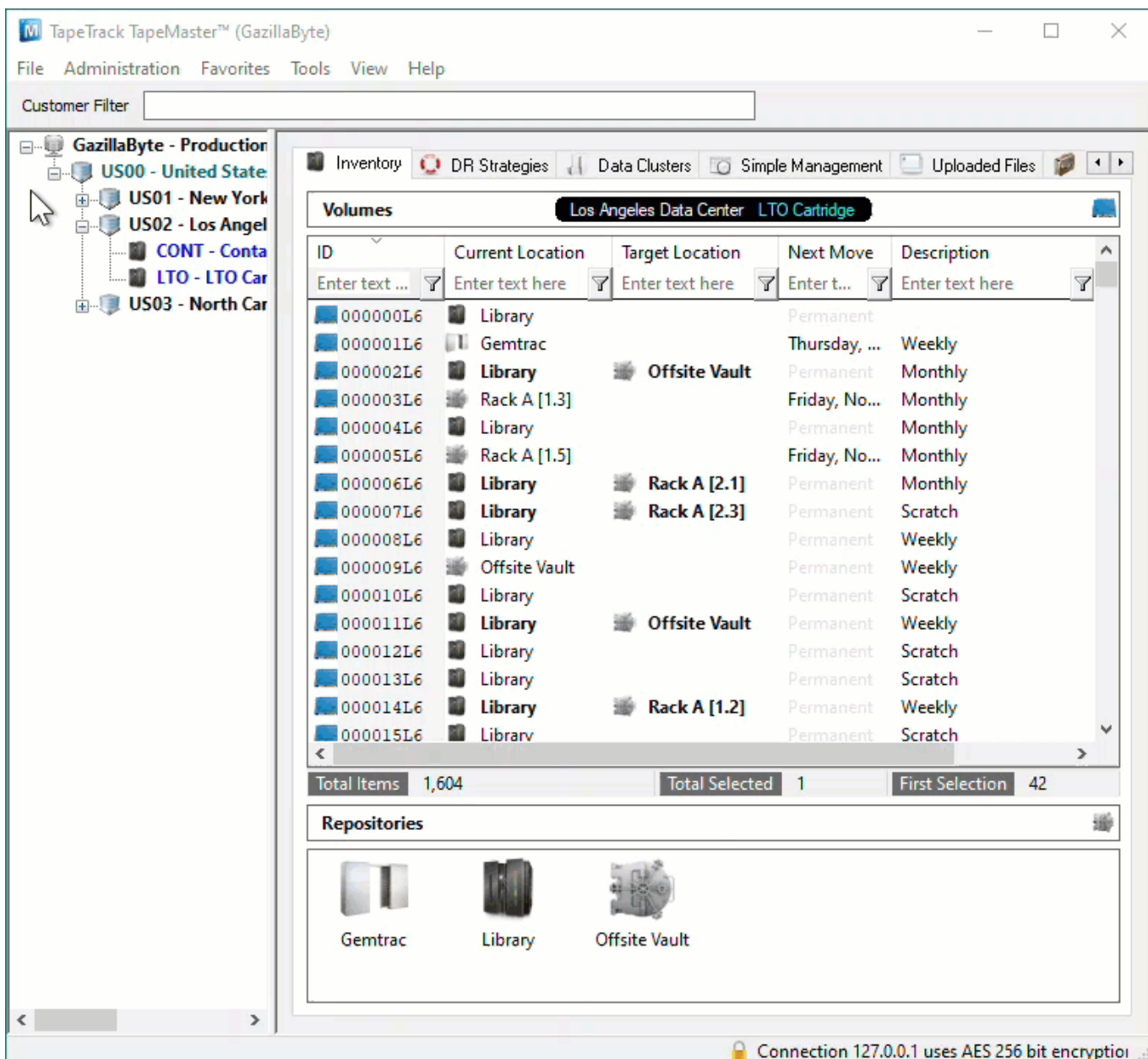
Volumes in a move to or currently confirmed in to the Target Repository you will only need to have the Slot number set.

Volumes not in a move to or currently confirmed in to the Target Repository you will need both the Target Repository as well as the Slot number set.

While this process can be used any number of [Volumes](#), you can only select a [Slot](#) for one [Volume](#) at a time so this process is best suited to one or low number of [Volumes](#). To [Slot](#) multiple [Volumes](#) more efficiently see [Scan to assign using Repository Usage Map](#).

Opening Volume Properties

Double click the required Volume or right click and select [Properties](#) and select the Target Repository tab.



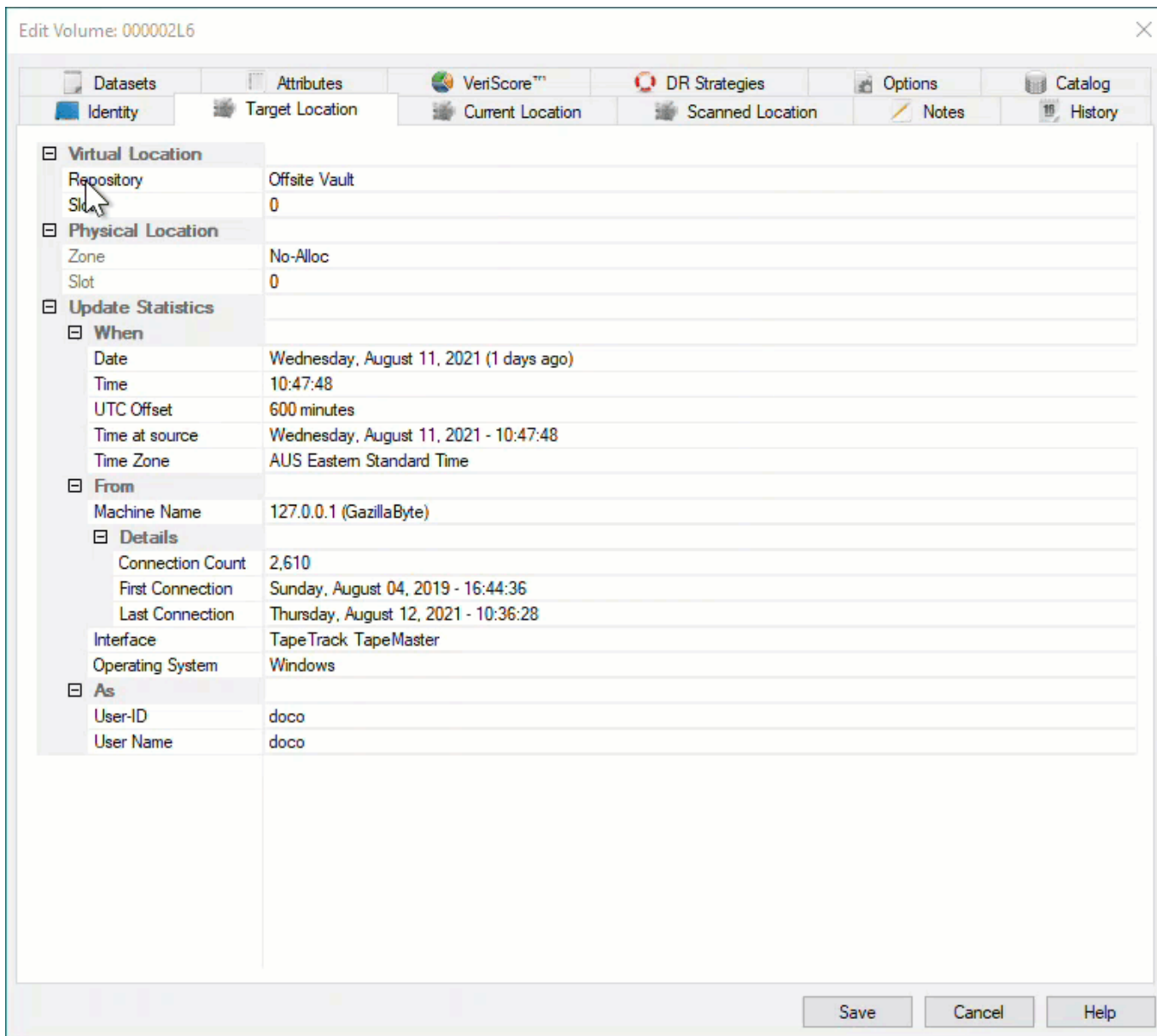
Set Repository And Slot Allocation

From the Volume Properties window select the Target Location tab.

Setting Slot

Click in the field Slot under the section Virtual Location to open the Slot Selection window.

Select an unallocated Slot and click OK to close the window.



Click Save on the Volume Properties window to commit the updated data.

Setting Repository And Slot

Click in the field Repository under the section Virtual Location and select the required Repository.

Click Yes to the Repository Changed dialog to open the Slot Selection window.

Select an unallocated Slot and click OK to close the window.

Virtual Location
Repository Library

Physical Location
Zone No-Alloc
Slot 0

Update Statistics

When
Date Tuesday, August 10, 2021 (1 days ago)
Time 11:13:22
UTC Offset 600 minutes
Time at source Tuesday, August 10, 2021 - 11:13:22
Time Zone AUS Eastern Standard Time

From
Machine Name 127.0.0.1 (GazillaByte)

Details
Connection Count 2,610
First Connection Sunday, August 04, 2019 - 16:44:36
Last Connection Thursday, August 12, 2021 - 10:36:28
Interface TapeTrack TapeMaster
Operating System Windows

As
User-ID doco
User Name doco

Save Cancel Help

Click Save on the Volume Properties window to commit the updated data.

From:
<https://rtfm.tapetrack.com/> - **TapeTrack Documentation**

Permanent link:
https://rtfm.tapetrack.com/technote/assign_slot_volume_properties?rev=1628730434

Last update: **2025/01/21 22:07**

