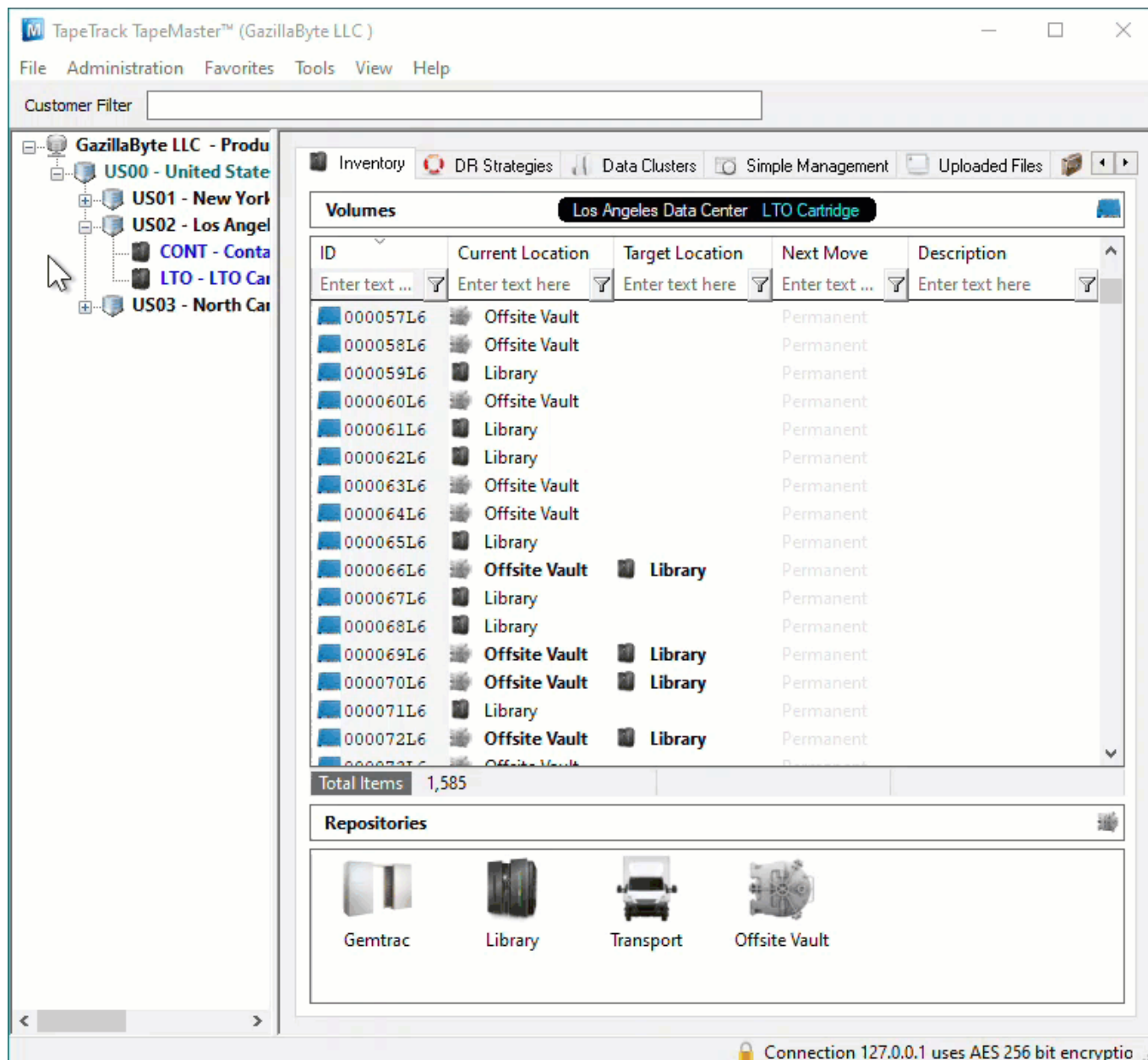


# Barcode Interpretation Definition

A Barcode Interpretation Definition uses a string pattern to identify the barcodes format and handle the barcode accordingly.

The string pattern allows the dissection, translation or substitution of a barcode to identify [Customer-ID](#), [Media-ID](#) and [Volume-ID](#).

To view, add, remove or alter current Barcode Interpretation Definitions, open the [Barcode Administration](#) window in TapeMaster.



## Examples

## Barcode Pattern Definition ????.\*

? translates to a single character \* translates as a wild card and matches anything

| Property                  | Value                |
|---------------------------|----------------------|
| Enabled                   | True                 |
| Barcode Description       | Generic ????.*       |
| <b>Scope</b>              |                      |
| Barcode Pattern           | ????[-]????[-]*      |
| User Pattern              | *                    |
| Range Start               |                      |
| Range End                 |                      |
| <b>Editing</b>            |                      |
| Edit Mask                 | 00000000000000000000 |
| Strip Characters          |                      |
| <b>Elements</b>           |                      |
| <b>Customer-ID</b>        |                      |
| Use substring             | True                 |
| Substring First Character | 1                    |
| Substring Last Character  | 4                    |
| <b>Media-ID</b>           |                      |
| Use substring             | True                 |
| Substring First Character | 6                    |
| Substring Last Character  | 9                    |
| <b>Volume-ID</b>          |                      |
| Use substring             | True                 |
| Substring First Character | 11                   |
| Substring Last Character  | 20                   |

Barcode US01.CONT.CT100100

The filter will dissect the barcode to

- Customer-ID: US01
- Media-ID: CONT
- Volume-ID: CT100100

## Barcode Pattern Definition \*? ?\*

? translates to a single character \* translates as a wild card and matches anything

