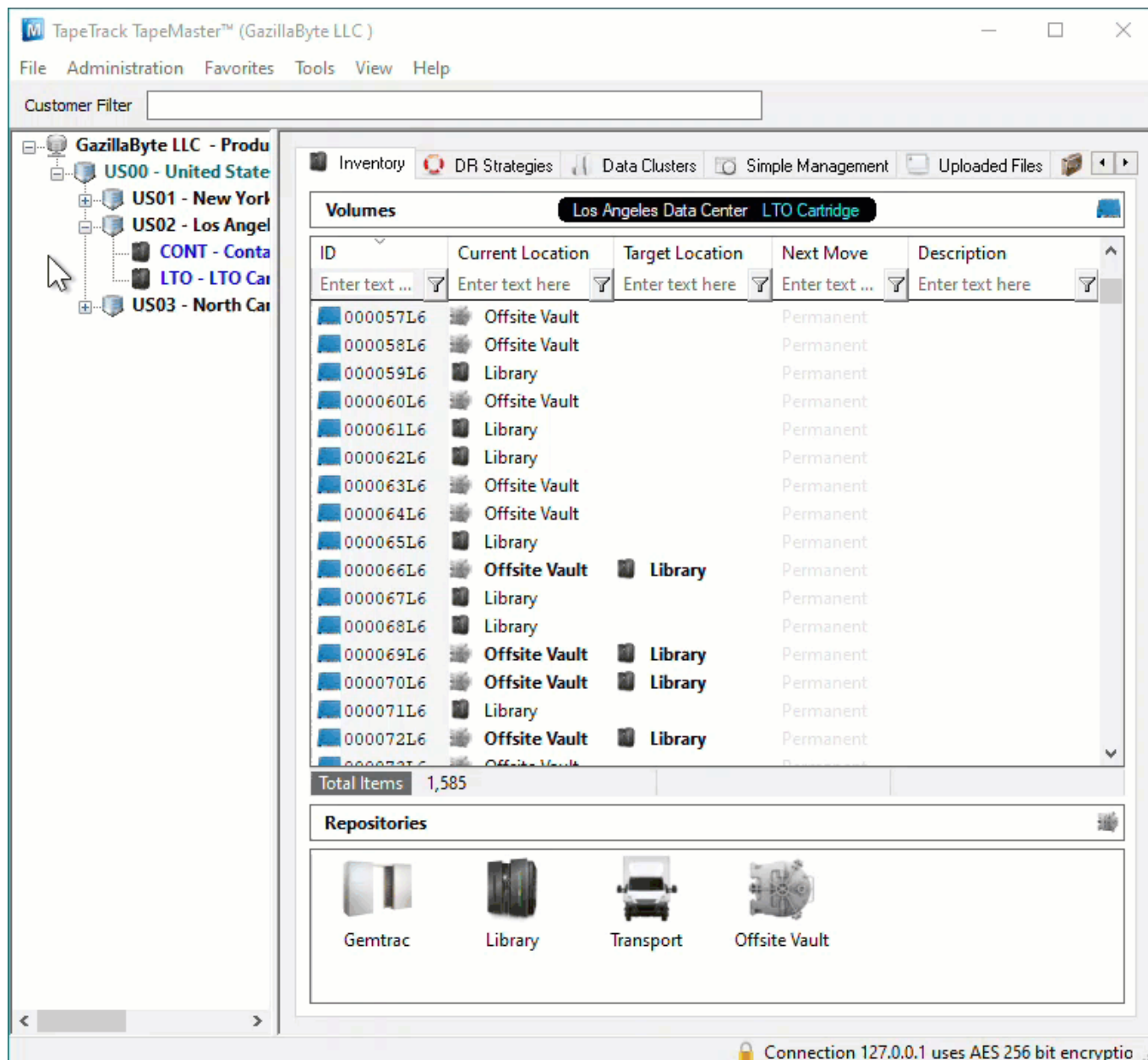


# Barcode Interpretation Definition

A Barcode Interpretation Definition uses a string pattern to identify the barcodes format and handle the barcode accordingly.

The string pattern allows the dissection, translation or substitution of a barcode to identify [Customer-ID](#), [Media-ID](#) and [Volume-ID](#).

To view, add, remove or alter current Barcode Interpretation Definitions, open the [Barcode Administration](#) window in TapeMaster.



## Barcode Administration

When TapeTrack is installed the Barcode Administration window comes with generic barcode definitions pre-installed. These barcode definitions will handle the majority of standard barcode

formats. If you use a custom format of barcodes or deal with Customers that do you will need to add barcode definitions to instruct TapeTrack how to read them.

Barcode definition are read by TapeTrack from the top of the list (position 000) sequentially to the last definition, stopping when a match is found. It is therefore important to make sure your list is structured in such a way that the correct barcode definition is used to parse the barcodes.

For example, if you had a current barcode definition which encompassed most of your Volume-ID's but had a handful of Volume-ID's that needed customised processing but still met the above pattern, you would need to place the customised definition before it as the first compatible definition will be used.

## Examples

### Barcode Pattern Definition ?????????.\*

? translates to a single character \* translates as a wild card and matches anything

Edit Barcode	
Enabled	True
Barcode Description	Generic ?????????.*
Scope	
Barcode Pattern	????[-]????[-]*
User Pattern	*
Range Start	
Range End	
Editing	
Edit Mask	00000000000000000000
Strip Characters	
Elements	
Customer-ID	
Use substring	True
Substring First Character	1
Substring Last Character	4
Media-ID	
Use substring	True
Substring First Character	6
Substring Last Character	9
Volume-ID	
Use substring	True
Substring First Character	11
Substring Last Character	20

Barcode US01.CONT.CT100100

The filter will dissect the barcode to

- Customer-ID: US01
- Media-ID: CONT
- Volume-ID: CT100100

### Barcode Pattern Definition \*? ?\*

? translates to a single character \* translates as a wild card and matches anything

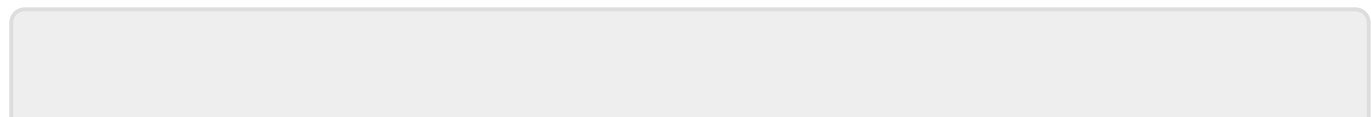
Enabled	True
Barcode Description	Space Barcode Hash
<b>Scope</b>	
Barcode Pattern	*? ?*
User Pattern	*
Range Start	
Range End	
<b>Editing</b>	
Edit Mask	00000000000000000000
Strip Characters	
<b>Elements</b>	
<b>Customer-ID</b>	
Use substring	False
Literal	
<b>Media-ID</b>	
Use substring	False
Literal	
<b>Volume-ID</b>	
Use substring	False
Literal	#

Volume-ID MONDAY WEEK ONE

The filter will hash the barcode to

- X-D8ED51DA

[technote](#), [barcode](#), [tapemaster](#)



Last update: 2025/01/21 22:07  
technote:barcode-interpretation-definition <https://rtfm.tapetrack.com/technote/barcode-interpretation-definition?rev=1614205657>

---

From:  
<https://rtfm.tapetrack.com/> - **TapeTrack Documentation**

Permanent link:  
<https://rtfm.tapetrack.com/technote/barcode-interpretation-definition?rev=1614205657>

Last update: **2025/01/21 22:07**

