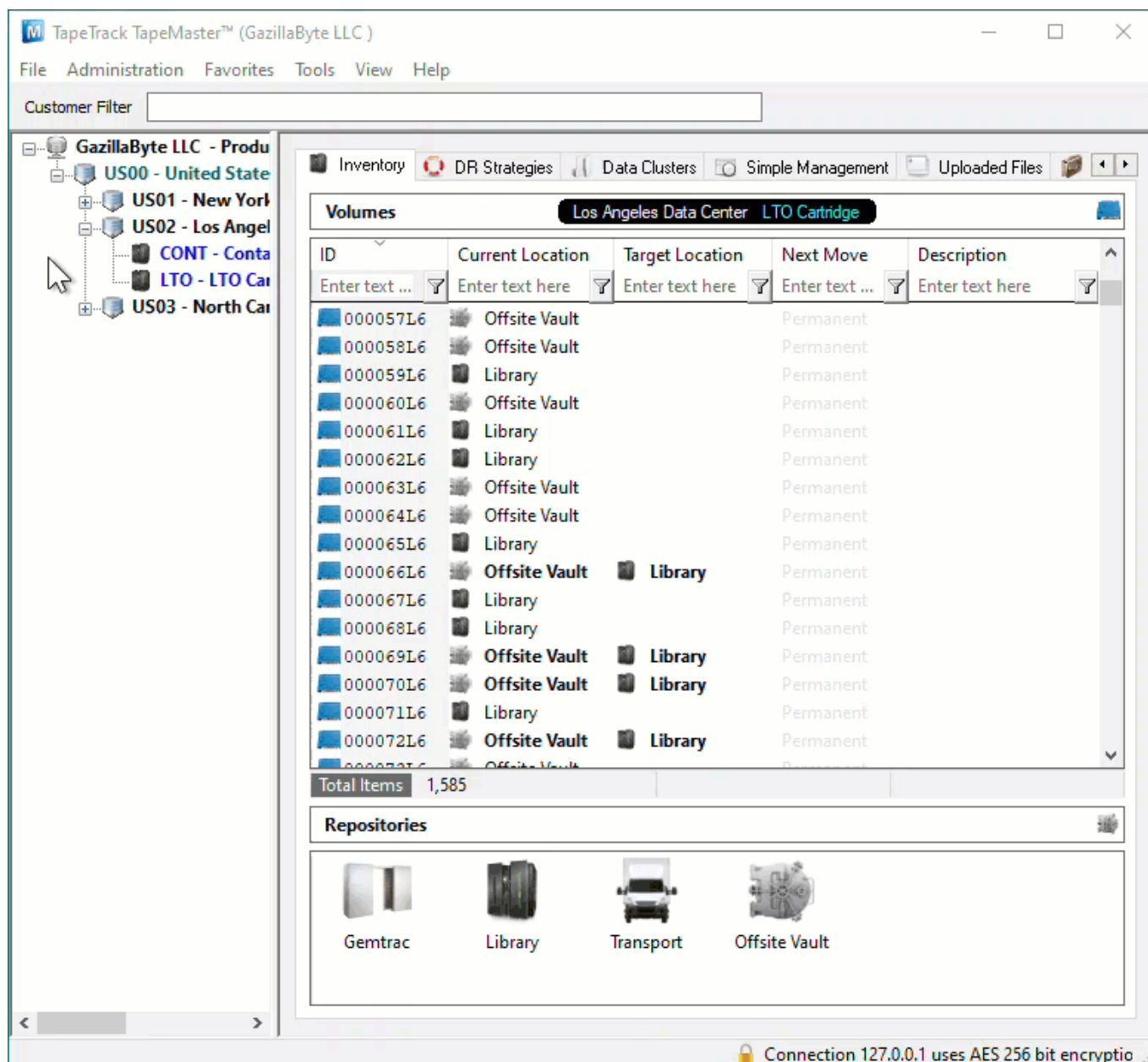


Barcode Interpretation Definition

A Barcode Interpretation Definition uses a string pattern to identify the Barcodes format and handle the Barcode accordingly.

The string pattern allows the dissection, translation or substitution of a Barcode to identify [Customer-ID](#), [Media-ID](#) and [Volume-ID](#).

To view, add, remove or alter current Barcode Interpretation Definitions, open the [Barcode Administration](#) window in TapeMaster.



Barcode Administration

When TapeTrack is installed the Barcode Administration window comes with generic Barcode definitions pre-installed. These Barcode definitions will handle the majority of standard Barcode

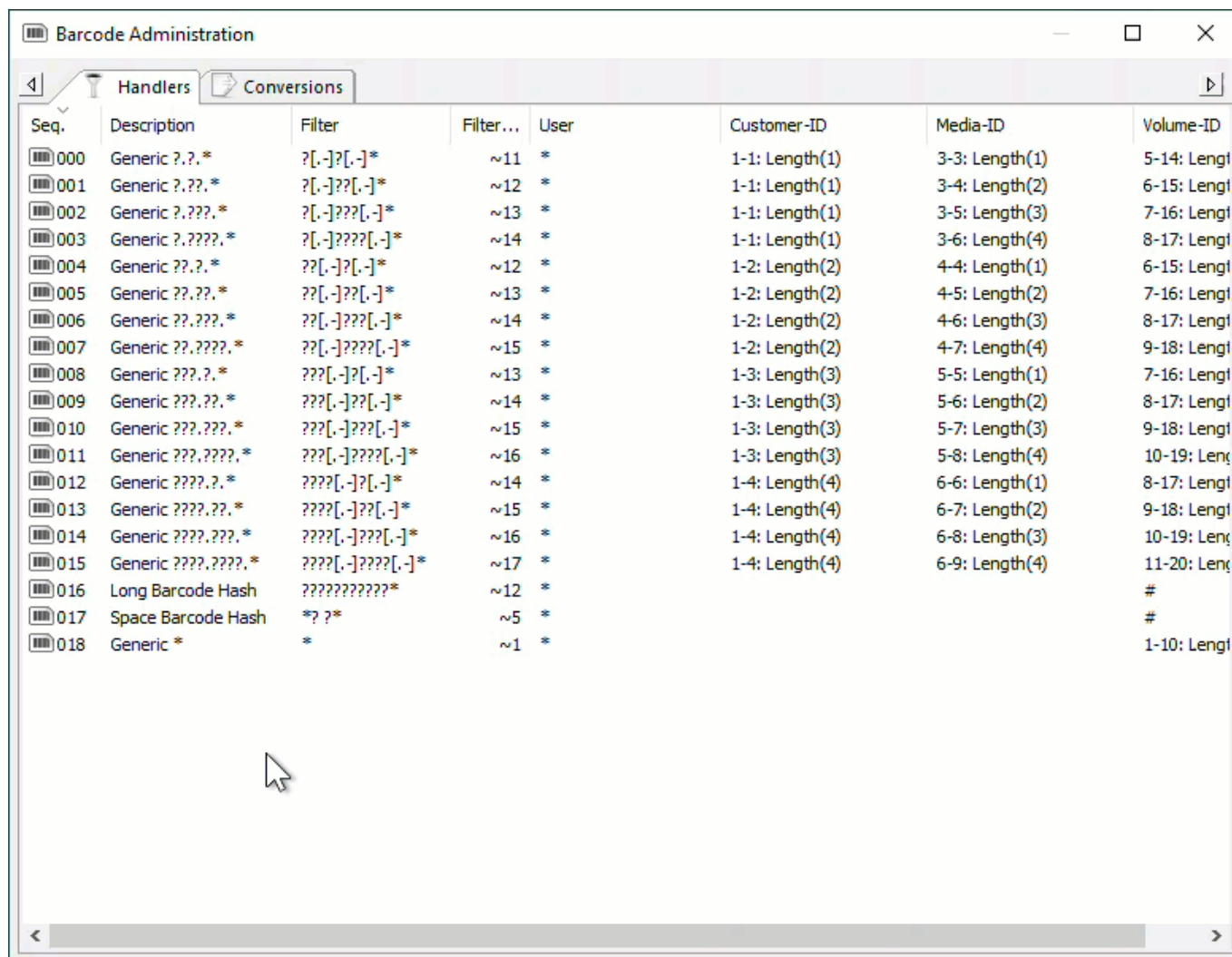
formats. If you use a custom formatted Barcodes or deal with Customers that do you will need to add Barcode definitions to instruct TapeTrack how to read them.

Barcode definition are read by TapeTrack from the top of the list (position 000) sequentially to the last definition, stopping when a match is found. It is therefore important to make sure your list is structured in such a way that the correct Barcode definition is used to parse the Barcodes.

For example, if you had a current barcode definition which encompassed most of your Volume-ID's but had a handful of Volume-ID's that needed customised processing but still met the above pattern, you would need to place the customised definition before it as the first compatible definition will be used.

Add New Barcode Definition

Right click on a current Barcode Definition in a position you want to add the new definition to. Select Add and then Before, After or End depending on where you want the new definition added to.



The screenshot shows the 'Barcode Administration' window with a table of barcode definitions. The table has columns for Seq., Description, Filter, Filter..., User, Customer-ID, Media-ID, and Volume-ID. The definitions are numbered 000 to 018. A mouse cursor is pointing at the bottom of the table.

Seq.	Description	Filter	Filter...	User	Customer-ID	Media-ID	Volume-ID
000	Generic ?.?.*	?[-]?[-]*	~11	*	1-1: Length(1)	3-3: Length(1)	5-14: Leng
001	Generic ???.*	?[-]??[-]*	~12	*	1-1: Length(1)	3-4: Length(2)	6-15: Leng
002	Generic ????.*	?[-]???[-]*	~13	*	1-1: Length(1)	3-5: Length(3)	7-16: Leng
003	Generic ?????.*	?[-]????[-]*	~14	*	1-1: Length(1)	3-6: Length(4)	8-17: Leng
004	Generic ???.*	??[-]?[-]*	~12	*	1-2: Length(2)	4-4: Length(1)	6-15: Leng
005	Generic ???.*	??[-]??[-]*	~13	*	1-2: Length(2)	4-5: Length(2)	7-16: Leng
006	Generic ????.*	??[-]???[-]*	~14	*	1-2: Length(2)	4-6: Length(3)	8-17: Leng
007	Generic ????.*	??[-]????[-]*	~15	*	1-2: Length(2)	4-7: Length(4)	9-18: Leng
008	Generic ????.*	???[-]?[-]*	~13	*	1-3: Length(3)	5-5: Length(1)	7-16: Leng
009	Generic ????.*	???[-]??[-]*	~14	*	1-3: Length(3)	5-6: Length(2)	8-17: Leng
010	Generic ????.*	???[-]???[-]*	~15	*	1-3: Length(3)	5-7: Length(3)	9-18: Leng
011	Generic ????.*	???[-]????[-]*	~16	*	1-3: Length(3)	5-8: Length(4)	10-19: Leng
012	Generic ????.*	???[-]?[-]*	~14	*	1-4: Length(4)	6-6: Length(1)	8-17: Leng
013	Generic ????.*	???[-]??[-]*	~15	*	1-4: Length(4)	6-7: Length(2)	9-18: Leng
014	Generic ????.*	???[-]???[-]*	~16	*	1-4: Length(4)	6-8: Length(3)	10-19: Leng
015	Generic ????.*	???[-]????[-]*	~17	*	1-4: Length(4)	6-9: Length(4)	11-20: Leng
016	Long Barcode Hash	??????????*	~12	*			#
017	Space Barcode Hash	*? ?*	~5	*			#
018	Generic *	*	~1	*			1-10: Leng

Edit New Barcode Definition

Right click on the new barcode definition and select Properties, or double click, to open the Edit Barcode window.

Barcode Fields

- Enabled
 - True: Barcode Definition is active.
 - False: Barcode Definition is not active.
- Barcode Description: Description of Barcode Definition, usually identifying definition action.
- Scope
 - Barcode Pattern
 - User Pattern
 - Range Start
 - Range End
- Editing
 - Edit Mask
 - Strip Characters
- Elements: Fields displayed for the Elements depend on the value chosen for Use Substring
 - Customer-ID
 - Use Substring
 - False Does not use a substring (portion of the Barcode) for Customer-ID
 - Literal: Only visible when Use Substring set to False. Use a literal value for Customer-ID.
 - True: Uses a substring (portion of the Barcode) for Customer-ID
 - Substring First Character: Only visible when Use Substring set to True. Position of start of substring of Customer-ID.
 - Substring Last Character: Only visible when Use Substring set to True. Position of end of substring of Customer-ID.
 - Media-ID
 - Use Substring
 - False Does not use a substring (portion of the Barcode) for Media-ID
 - Literal: Only visible when Use Substring set to False. Use a literal value for Media-ID.
 - True: Uses a substring (portion of the Barcode) for Media-ID
 - Substring First Character: Only visible when Use Substring set to True. Position of start of substring of Media-ID.
 - Substring Last Character: Only visible when Use Substring set to True. Position of end of substring of Media-ID.
 - Volume-ID
 - Use Substring
 - False Does not use a substring (portion of the Barcode) for Volume-ID
 - Literal: Only visible when Use Substring set to False. Use a literal value for Volume-ID.
 - True: Uses a substring (portion of the Barcode) for Volume-ID
 - Substring First Character: Only visible when Use Substring set to True. Position of start of substring of Volume-ID.
 - Substring Last Character: Only visible when Use Substring set to True. Position of end of substring of Volume-ID.

Editing new Barcode Definition for long duplicate Barcodes,

- Matching filter ????????DUP-?? (eg. 004762L3DUP-01)
- Limited to User-ID's starting with US
- Drop characters UP-0 from Barcode using mask 00000000011110

Enabled	True
Barcode Description	** New **
Scope	
Barcode Pattern	
User Pattern	*
Range Start	
Range End	
Editing	
Edit Mask	00000000000000000000
Strip Characters	
Elements	
Customer-ID	
Use substring	False
Literal	
Media-ID	
Use substring	False
Literal	
Volume-ID	
Use substring	True
Substring First Character	1
Substring Last Character	10

Further Examples

For a range of Barcode definitions see [Barcode Definition Examples](#).

From: <https://rtfm.tapetrack.com/> - **TapeTrack Documentation**

Permanent link: <https://rtfm.tapetrack.com/technote/barcode-interpretation-definition?rev=1614215226>

Last update: **2025/01/21 22:07**

