

# Changing Connection Port Allocation

During an upgrade or migration of your TapeTrack Server you may choose to change which port the Framework communicates with the Desktop Client programs.

## Changing Framework Server Port Allocation

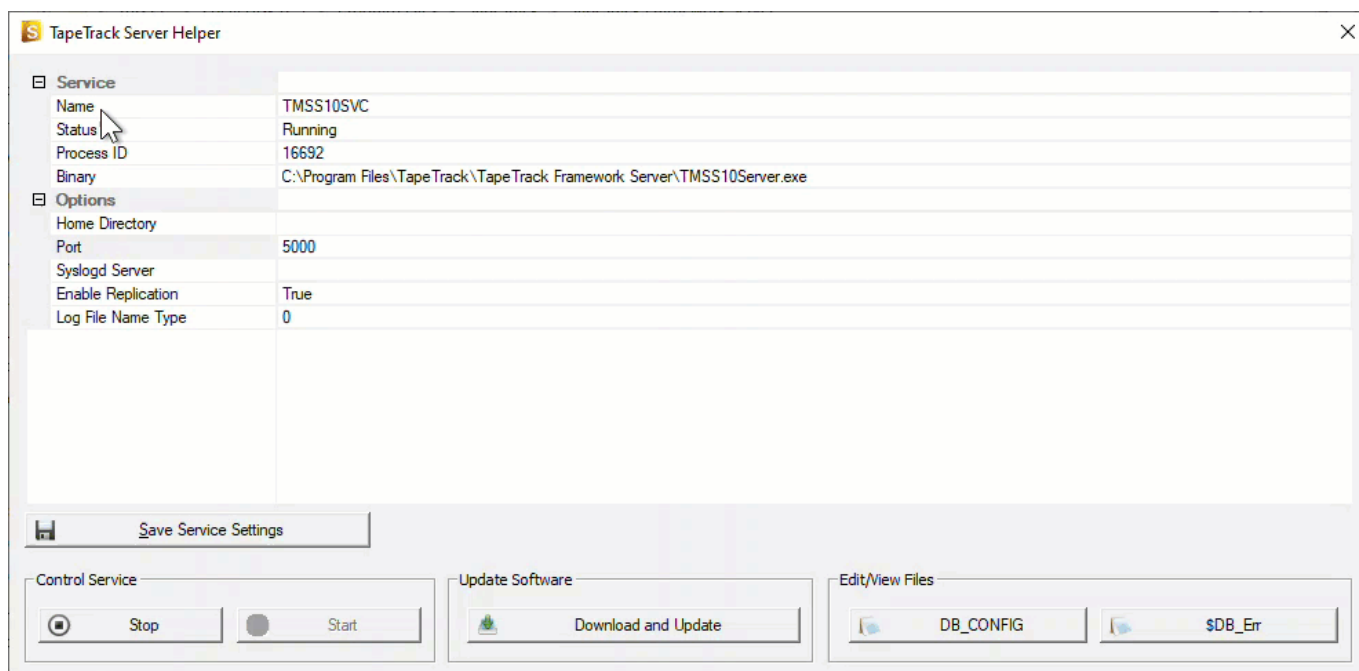
### Changing Port Using The Framework Server Helper

Changing Port using the Framework Server Helper is the easiest and most recommended method.

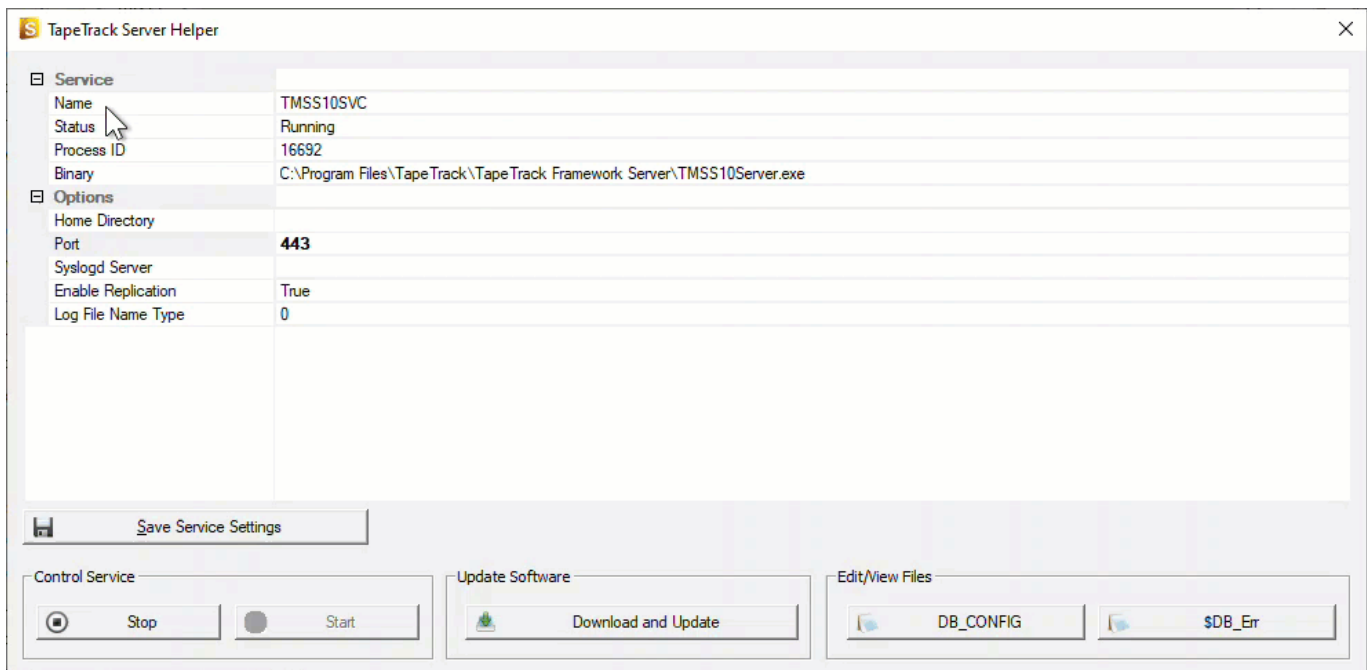
Open the Framework Server Helper which is installed in the directory TapeTrack\TapeTrack Framework Server, (default location C:\Program Files\TapeTrack\TapeTrack Framework Server) by double clicking on the executable TMSS10ServerHelper.exe.

Change the port number in the field Port under the Options section to the required port number, in this example from port 5000 to 443.

Click Save Service Settings to update the data.



[Stop and then start the TapeTrack Service](#) to allow the Framework Server to access the new port.



## Changing Port Using The Registry Editor

Changes made to the Windows registry happen immediately, and no backup is automatically made. Do not edit the Windows registry unless you are qualified and confident about doing so.

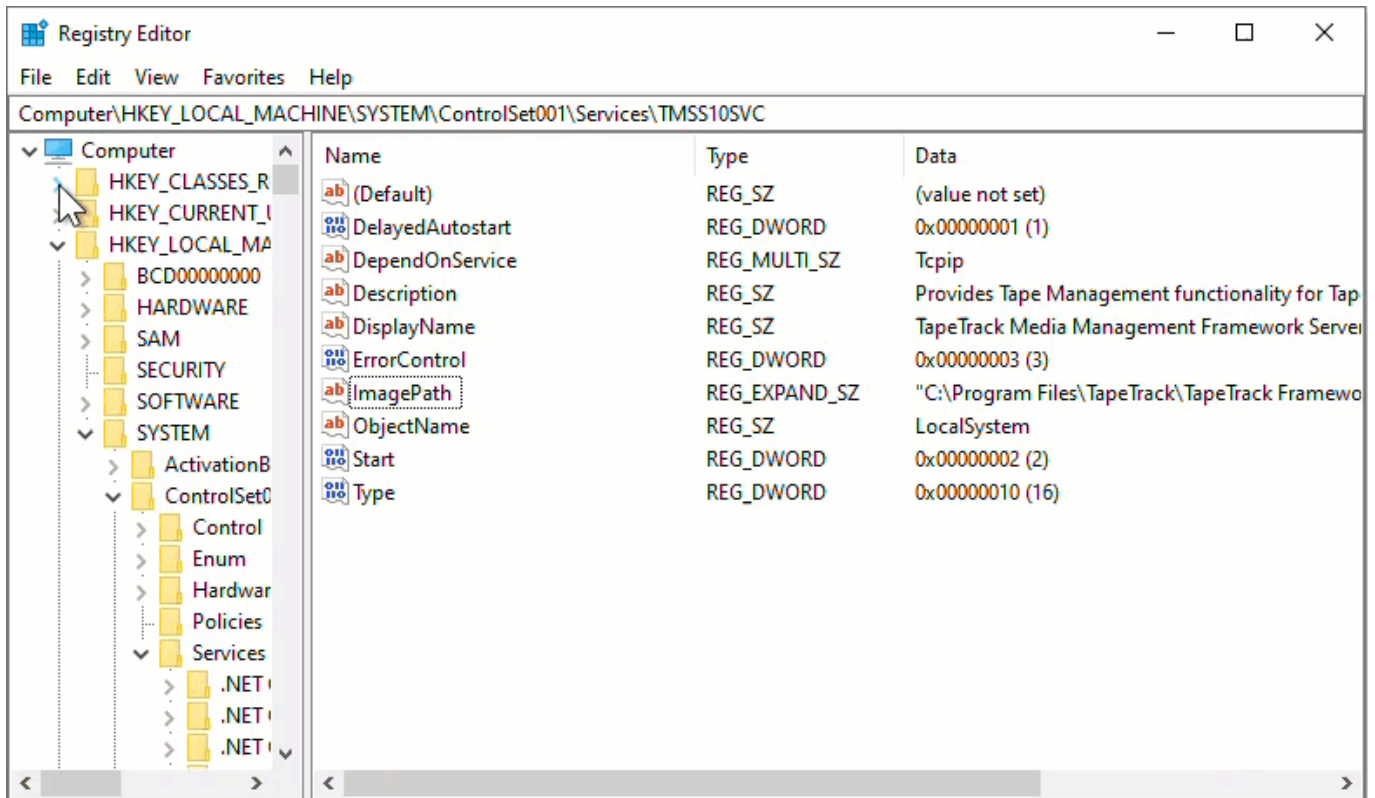


Microsoft have issued the following warning with respect to the Registry Editor: *“Using Registry Editor incorrectly can cause serious, system-wide problems that may require you to re-install Windows to correct them. Microsoft cannot guarantee that any problems resulting from the use of Registry Editor can be solved. Use this tool at your own risk.”*

Create a [Registry Backup](#) before making any alterations.

In Regedit, navigate to `Computer\HKEY_LOCAL_MACHINE\SYSTEM\ControlSet001\Services\TMSS10SVC.`

Open ImagePath by either double clicking or right clicking and selecting Modify.



## Changing Port Desktop Software

From:  
<https://rtfm.tapetrack.com/> - TapeTrack Documentation

Permanent link:  
[https://rtfm.tapetrack.com/technote/changing\\_port?rev=1631149347](https://rtfm.tapetrack.com/technote/changing_port?rev=1631149347)

Last update: 2025/01/21 22:07

