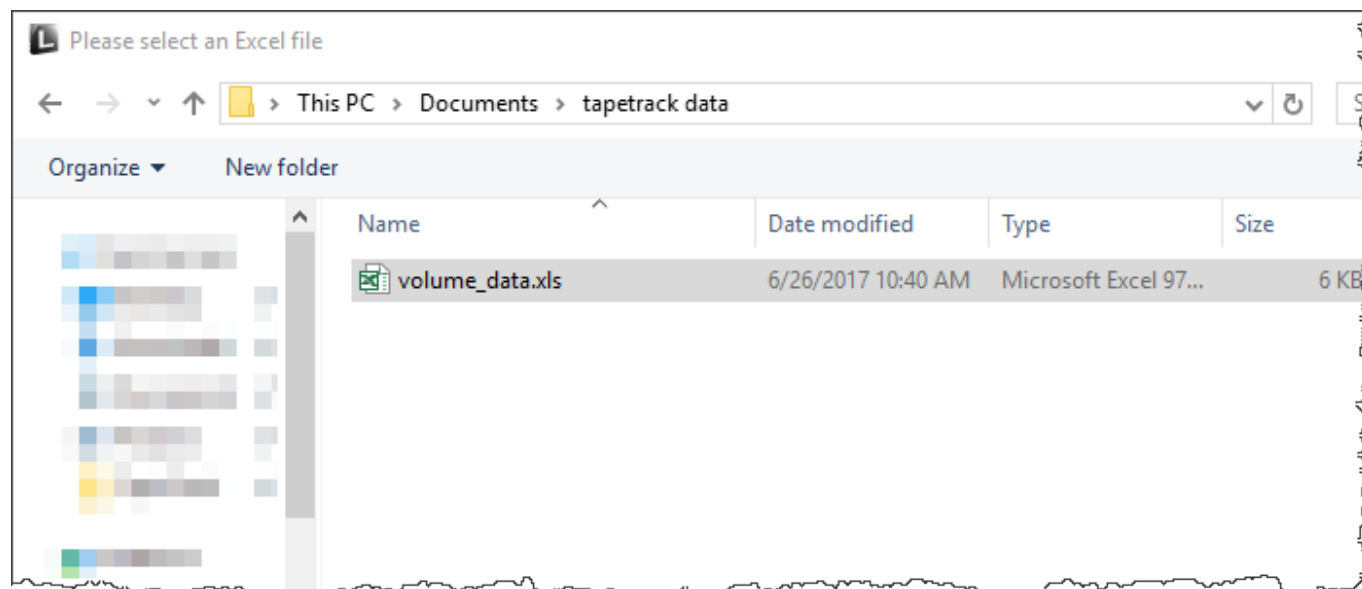


Importing Volumes And/Or Volume Data From Excel Spreadsheet

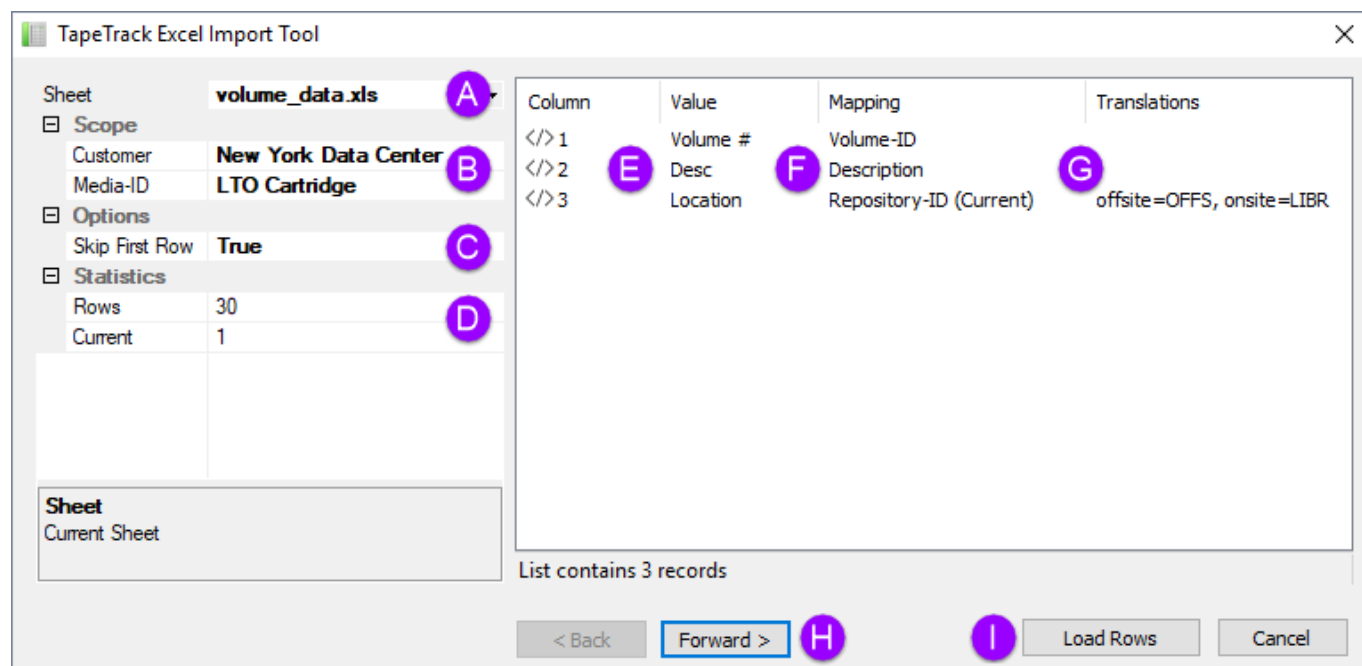
The Excel Import utility is [invoked through TapeMaster](#) or [Lite](#)

Select the Excel file to import the data from and then select Open.



In the TapeTrack Excel import tool:

- Select the Customer you wish to import the data into.
- Select the Excel sheet to import the data from.
- Select the Media type if the volumes all belong to one media type.
- Set Skip First Row to true if there are headings present.
- Map the Excel columns to the TapeTrack attributes.
- Insert any translations required to match the data to the correct format for TapeTrack.



Notes

- **A** Excel .xls file being imported.
- **B** Customer and Media-ID (Media-ID can be mapped from Excel file or set here).
- **C** Skip first row if headings are present.
- **D** Excel sheet data.
- **E** Excel sheet column headings.
- **F** TapeMaster attributes.
 - **Container-ID** Container ID to assign volume to.
 - **Date (Expiry)** Expiry date of volume.
 - **Date (Last Write)** Date the volume was last written to.
 - **Date (Next Move)** Date for volume's next move (i.e. return date from repository).
 - **Description** Volume description.
 - **Media-ID** Media-ID volumes belong to (can also be set on left window if all volumes are same media type).
 - **Repository Slot (Target)** Target slot to assign volume to.
 - **Repository-ID (Scanned)** Repository volume is to be scanned in at.
 - **Repository-ID (Target)** Target repository volume is to be placed in a move to.
 - **Volume-ID** Volume's barcode.
- **G** Translations of Excel data to TapeMaster format (i.e. offsite to OFFS).
- **H** Forward and back buttons allow you to scroll through the Excel lines to check data input.
- **I** Load Excel data into import verification window.

Once all the data columns are mapped and any translations are required (press enter first if focus is still in translations field to update) click Load Rows to import data from the Excel sheet.

Import Verification				
Seq.	Status	Volume-ID	Description	Repository-ID (Current)
+ 1	OK	300000L5	Monday	OFFS
+ 2	OK	300001L5	Tuesday	OFFS
+ 3	OK	300002L5	Wednesday	LIBR
+ 4	OK	300003L5	Thursday	LIBR
+ 5	OK	300004L5	Friday	OFFS
+ 6	OK	300005L5	Saturday	OFFS
+ 7	OK	300006L5	Sunday	OFFS
+ 8	OK	300007L5	Monday	LIBR
+ 9	OK	300008L5	Tuesday	OFFS
+ 10	OK	300009L5	Wednesday	OFFS
+ 11	OK	300010L5	Thursday	OFFS
+ 12	OK	300011L5	Friday	OFFS
+ 13	OK	300012L5	Saturday	LIBR
+ 14	OK	300013L5	Sunday	LIBR

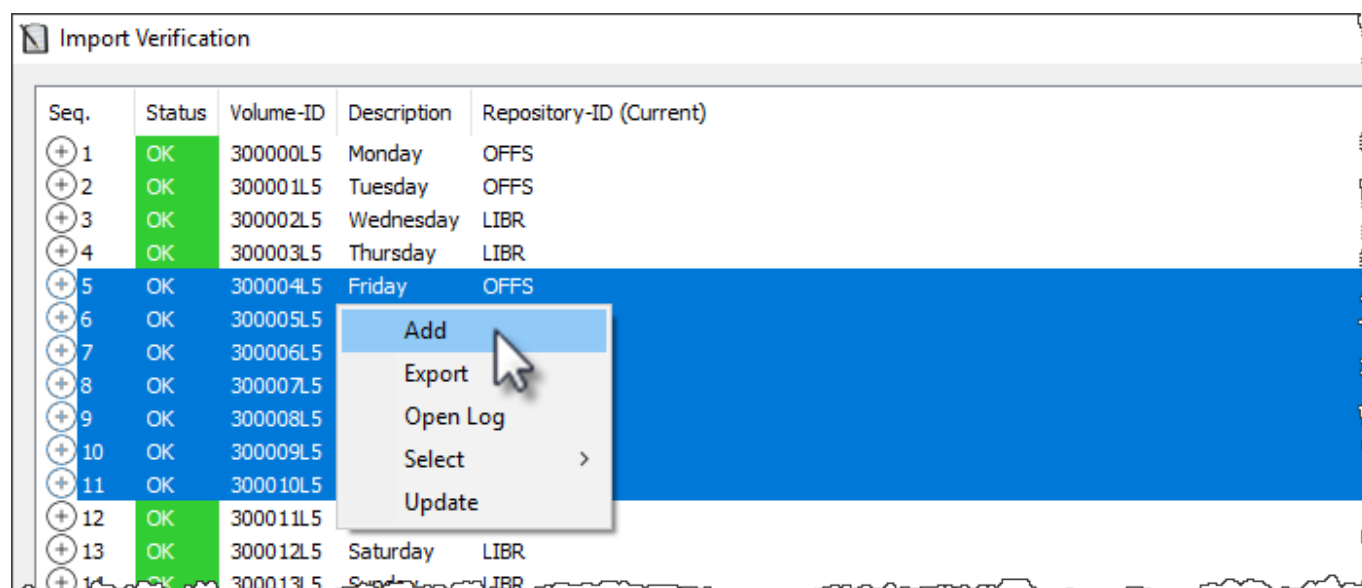
In the window that opens select all volumes to add or update from the displayed list.

Select volumes from the list by

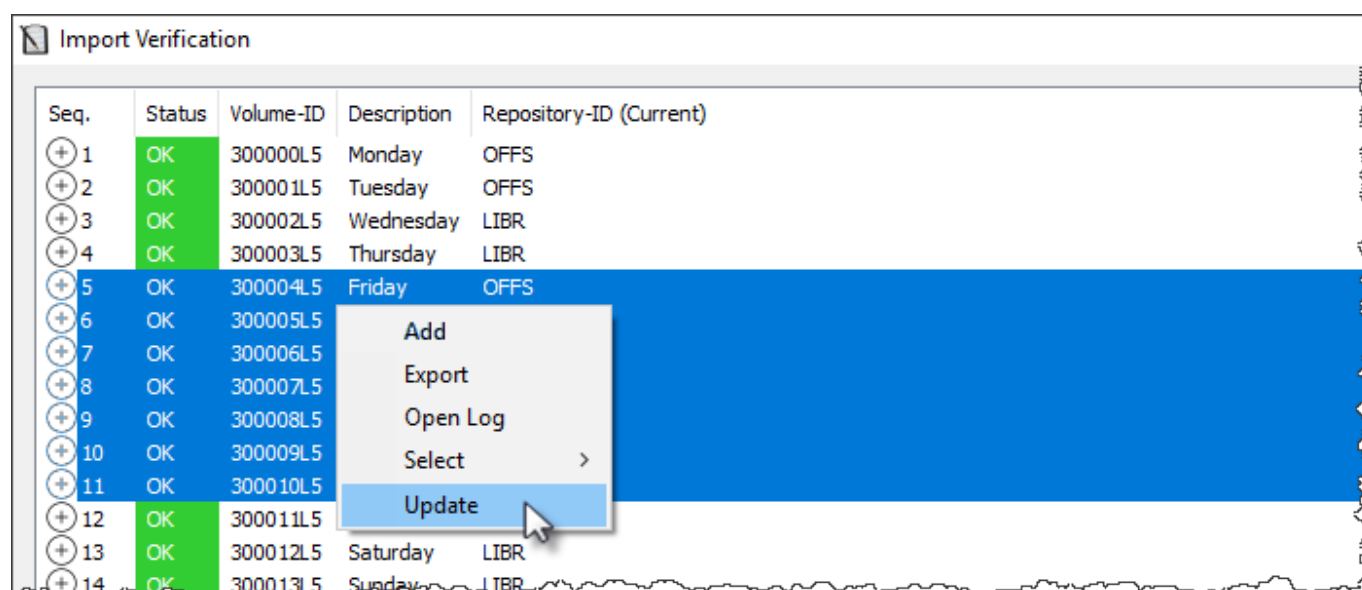
- left-click for a single volume.
- Shift + click to select a range of sequential volumes.
- Control + click to select non sequential range.
- Right-click and from the menu select all.

Any new volumes (not present in TapeTrack) will be highlighted by the Volume-ID's displayed in red.

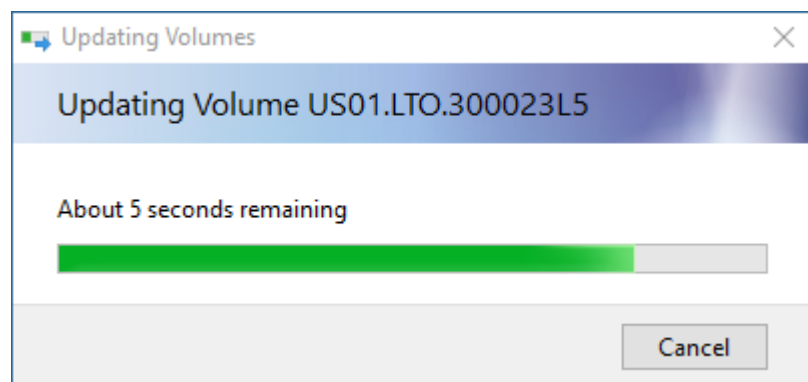
These volumes must be added to TapeTrack before any updates can be applied. To add the volumes, once selected, right-click the volumes and from the popup menu select Add. Once the volumes have been added the Volume-ID's will now display in black.



To update the volumes attributes (description, repository, next move etc.) select the required volumes, right-click and select Update.



During the Add or Update phases you may see a popup showing you the progress of selected operation.



Once this has closed itself you may continue on with the next phase or close the import window if finished. Select X to close.

From:

<https://rtfm.tapetrack.com/> - **TapeTrack Documentation**

Permanent link:

https://rtfm.tapetrack.com/technote/excel_import?rev=1551304502

Last update: **2025/01/21 22:07**

