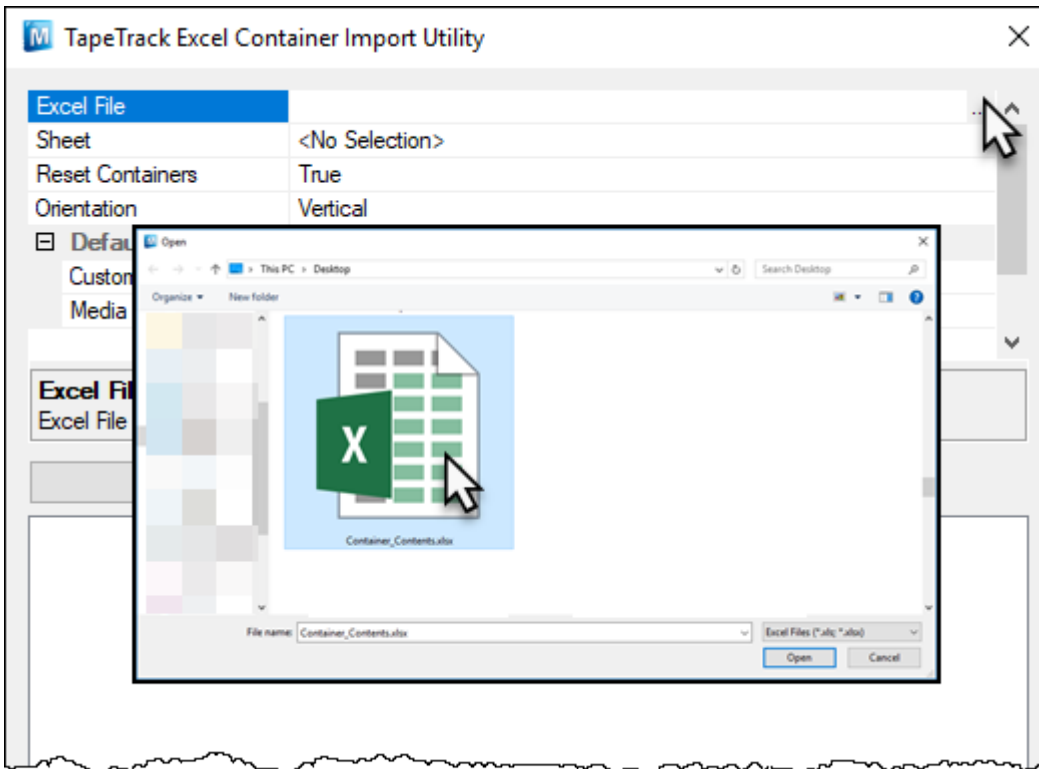


Excel Import - Container Table

Select Excel file by clicking on the right of the Excel File field



Select the required excel sheet by clicking on the right of the Sheet field and then clicking on the drop box arrow and selecting from the presented options.

Set Reset Containers to:

- True : Purges containers contained in the excel sheet before assigning volumes.
- False : leaves current volumes in the container and adds volumes in excel sheet.

Select orientation of data in the excel sheet:

- Horizontal : Containers listed in columns and assigned volumes in rows

	A	B	C	D	E	F	G	H	I	J	K
1	US04.CONT.CONT001	0000011L4	0000021L4	0000031L4	0000041L4	0000051L7	0000061L7				
2											
3	US04.CONT.CONT002	000007L7	000008L7	000009L7	000010L7	000011L7	000012L7				
4											
5	US04.CONT.CONT003	000013L7	000014L7	000015L7	000016L5	000017L5	000018L5				
6											
7	US04.CONT.CONT004	000019L5	000020L5	000021L5	000022L5	000023L5	000024L5				
8											
9	US04.CONT.CONT005	000025L5	000026L5	000027L5	000028L5	000029L5	000030L5				
10											
11	US04.CONT.CONT006	000031L5	000032L5	000033L5	000034L5	000035L5	000036L5				
12											
13	US04.CONT.CONT007	000037L5	000038L5	000039L5	000040L5	000041L5	000042L5				
14											
15	US04.CONT.CONT008	000043L5	000044L5	000045L5	000046L5	000047L5	000048L5				
16											

- Vertical : Containers listed in rows and assigned volumes in columns

Set Customer and media defaults for the volumes if they are not listed in the spreadsheet as fully qualified barcodes.

Click **Load** to load data from the spreadsheet, checking volume quantities assigned to each container are correct. If required, you can view each container's listed assigned volumes by clicking the + on the left of each container.

Click **Apply** to upload data to the TapeTrack Server Database and **Yes** to commit the data upload.

When finished uploading, the ***Failed Operations*** window will be displayed with any errors encountered. Close this window by either clicking **OK** or the **X** at the top right.

Close the import utility window by clicking **Cancel** or the **X** at the top right.

From:
<https://rtfm.tapetrack.com/> - **TapeTrack Documentation**

Permanent link:
https://rtfm.tapetrack.com/technote/excel_import_container?rev=1540255724

Last update: **2025/01/21 22:07**

