

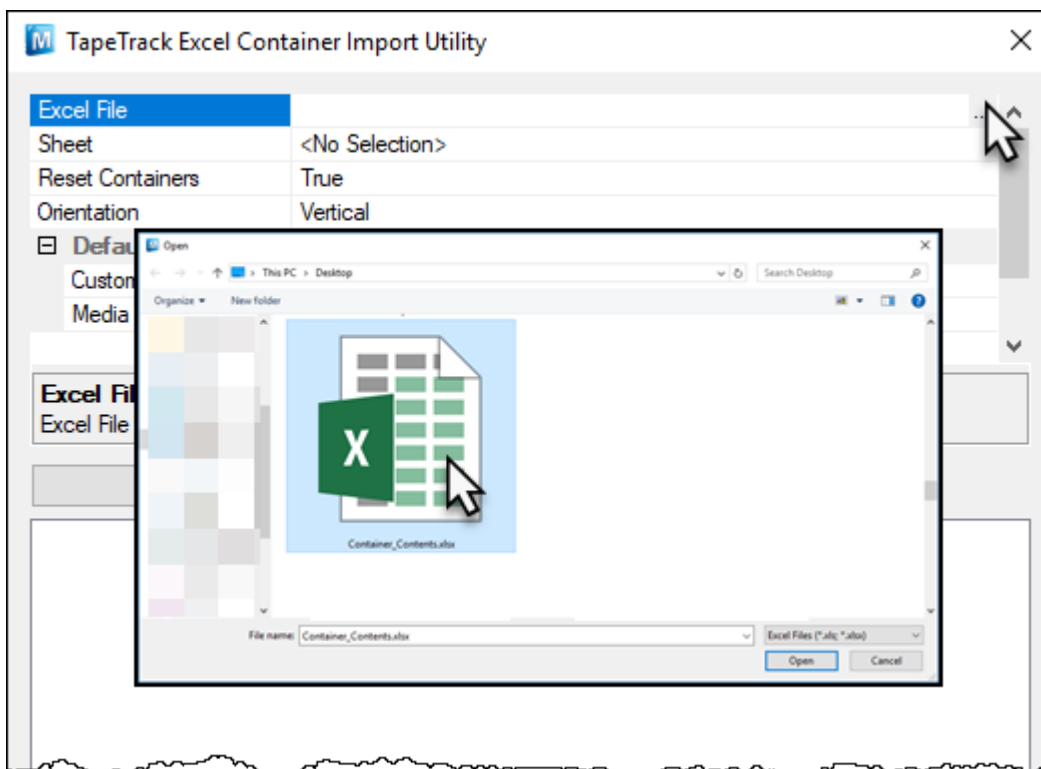
Excel Import - Container Table

The Excel Import - Container Table utility is [invoked through TapeMaster](#)

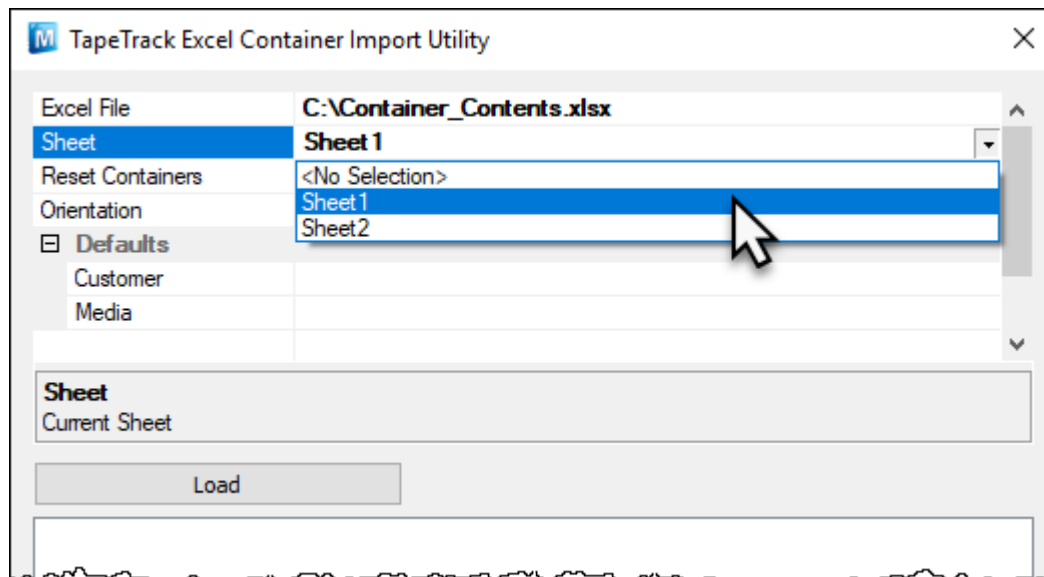


Container barcodes must be either [fully qualified](#), or be distinguishable from all other barcodes and have a corresponding [barcode rule](#) established in TapeMaster

Select Excel file by clicking in the Excel File field and clicking the more button (...) to select the Excel file.

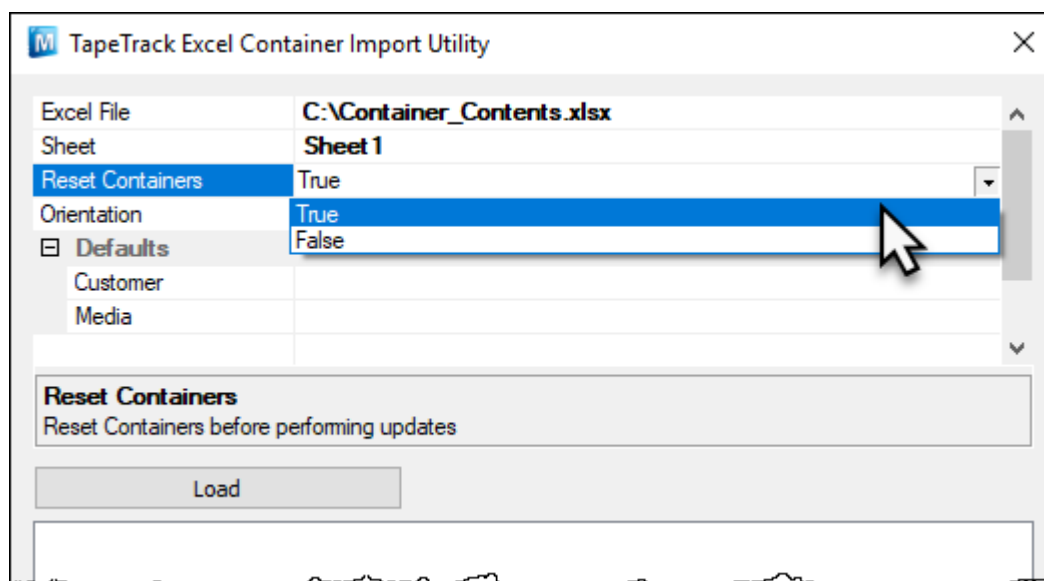


Select the required Excel sheet by clicking the Sheet field and then clicking on the drop box arrow and selecting from the presented options.



Set Reset Containers to:

- True : (Default) Purges containers contained in the Excel sheet before assigning volumes.
- False : Leaves current volumes in the container and adds volumes in Excel sheet.



From the field Orientation select orientation of data in the Excel sheet:

- Horizontal : Containers listed in columns and assigned volumes in rows

The screenshot shows an Excel spreadsheet with columns A through K and rows 1 through 16. The data is as follows:

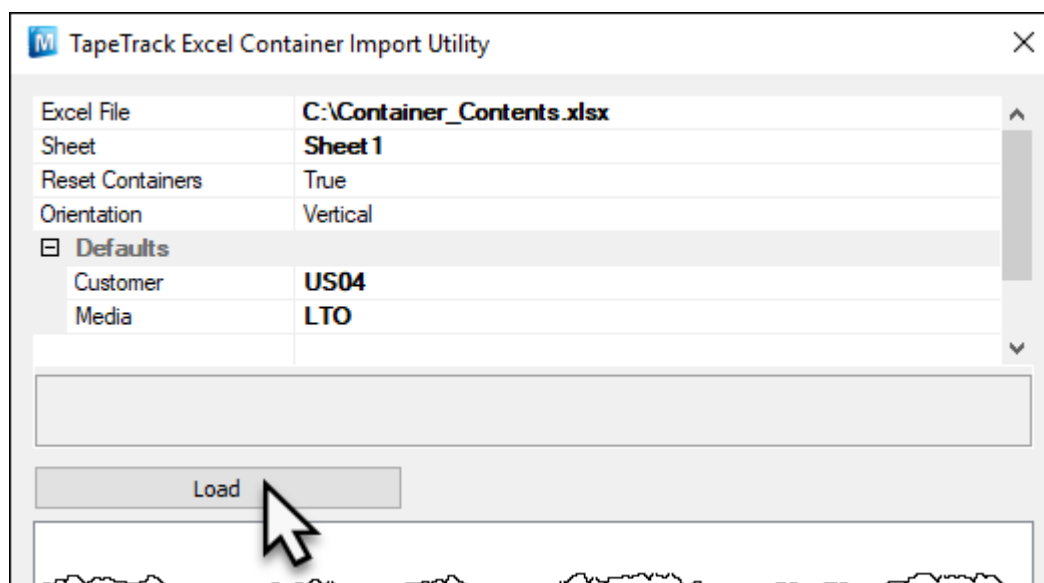
	A	B	C	D	E	F	G	H	I	J	K
1	US04.CONT.CONT001	000011L4	000002L4	000003L4	000004L4	000005L7	000006L7				
2											
3	US04.CONT.CONT002	000007L7	000008L7	000009L7	000010L7	000011L7	000012L7				
4											
5	US04.CONT.CONT003	000013L7	000014L7	000015L7	000016L5	000017L5	000018L5				
6											
7	US04.CONT.CONT004	000019L5	000020L5	000021L5	000022L5	000023L5	000024L5				
8											
9	US04.CONT.CONT005	000025L5	000026L5	000027L5	000028L5	000029L5	000030L5				
10											
11	US04.CONT.CONT006	000031L5	000032L5	000033L5	000034L5	000035L5	000036L5				
12											
13	US04.CONT.CONT007	000037L5	000038L5	000039L5	000040L5	000041L5	000042L5				
14											
15	US04.CONT.CONT008	000043L5	000044L5	000045L5	000046L5	000047L5	000048L5				
16											

- Vertical : Containers listed in rows and assigned volumes in columns

	A	B	C	D	E	F	G	H
1	US04.CONT.CONT001		US04.CONT.CONT002		US04.CONT.CONT003		US04.CONT.CONT004	
2	00000114		00000717		00001317		00001915	
3	00000214		00000817		00001417		00002015	
4	00000314		00000917		00001517		00002115	
5	00000414		00001017		00001615		00002215	
6	00000517		00001117		00001715		00002315	
7	00000617		00001217		00001815		00002415	
8	US04.CONT.CONT005		US04.CONT.CONT006		US04.CONT.CONT007		US04.CONT.CONT008	
9	00002515		00003115		00003715		00004315	
10	00002615		00003215		00003815		00004415	
11	00002715		00003315		00003915		00004515	
12	00002815		00003415		00004015		00004615	
13	00002915		00003515		00004115		00004715	
14	00003015		00003615		00004215		00004815	
15								
16								
17								

In the fields under the heading **Defaults**, set Customer and media defaults for the volumes if they are not listed in the spreadsheet as fully qualified barcodes.

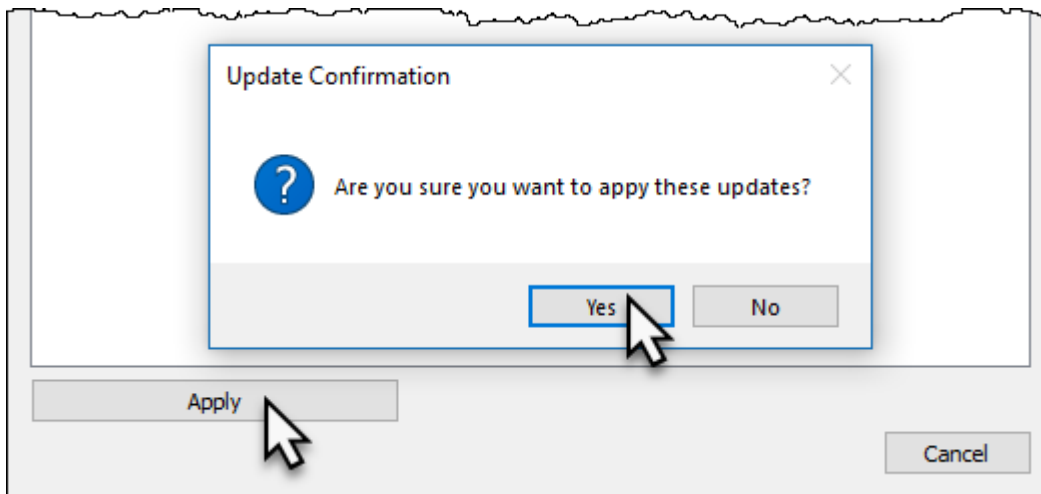
Click Load to load data from the spreadsheet.



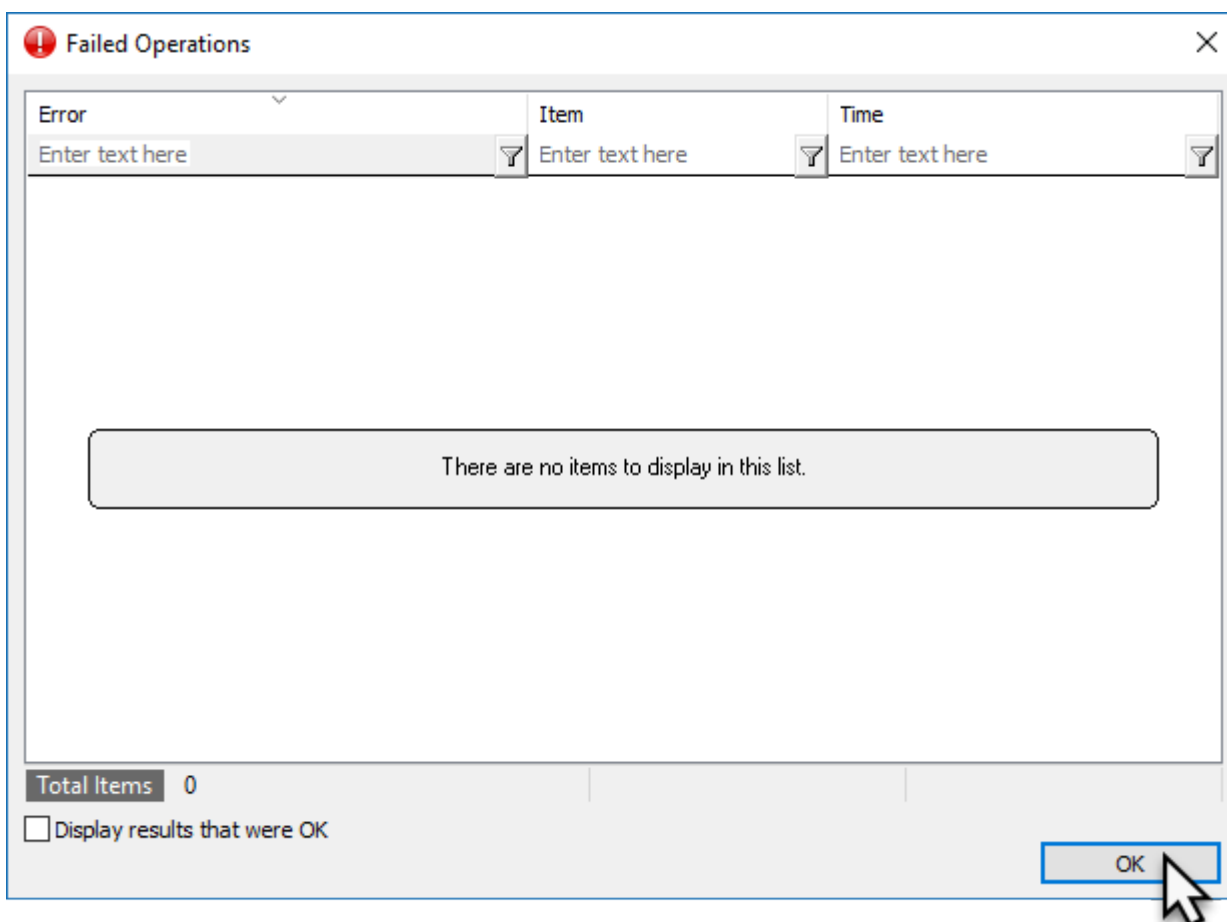
Checking volume quantities assigned to each container are correct. If required, you can view each container's listed assigned volumes by clicking the + on the left of each container.



Click **Apply** to upload data to the TapeTrack Server Database and **Yes** to commit the data upload.

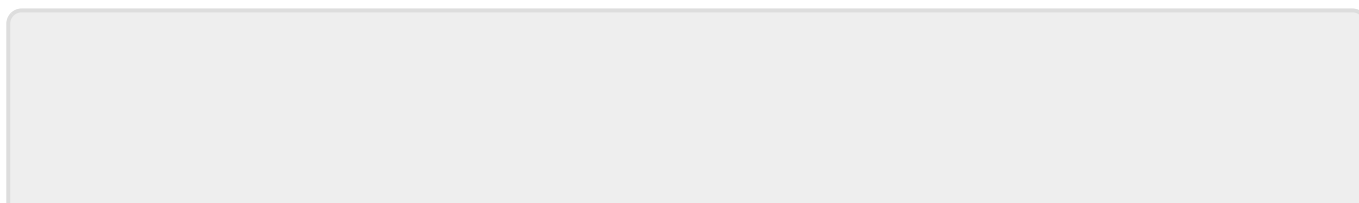


When uploading has finished, the **Failed Operations** window will be displayed with any errors encountered. Close this window by either clicking OK or the X at the top right.



Close the import utility window by clicking Cancel or or the X at the top right.

Click on the Customer Tree and press F5 to update display.



From:
<https://rtfm.tapetrack.com/> - **TapeTrack Documentation**

Permanent link:
https://rtfm.tapetrack.com/technote/excel_import_container?rev=1540335049



Last update: **2025/01/21 22:07**