

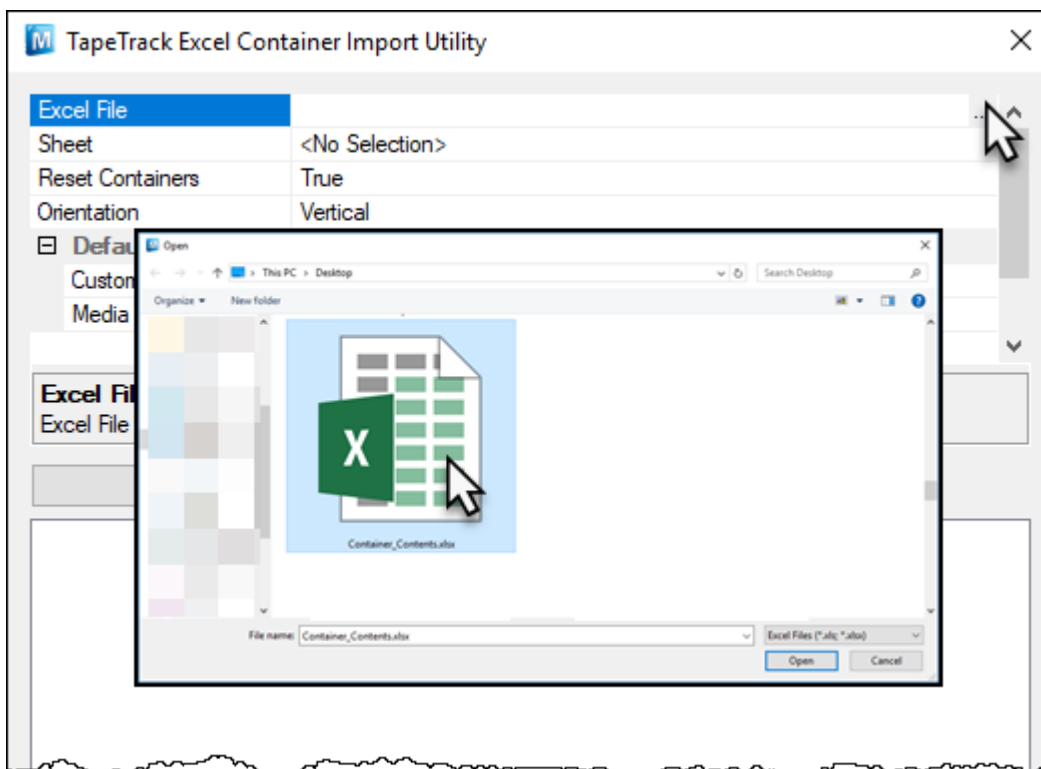
Excel Import - Container Table

The Excel Import - Container Table utility is [invoked through TapeMaster](#) or [Lite](#)

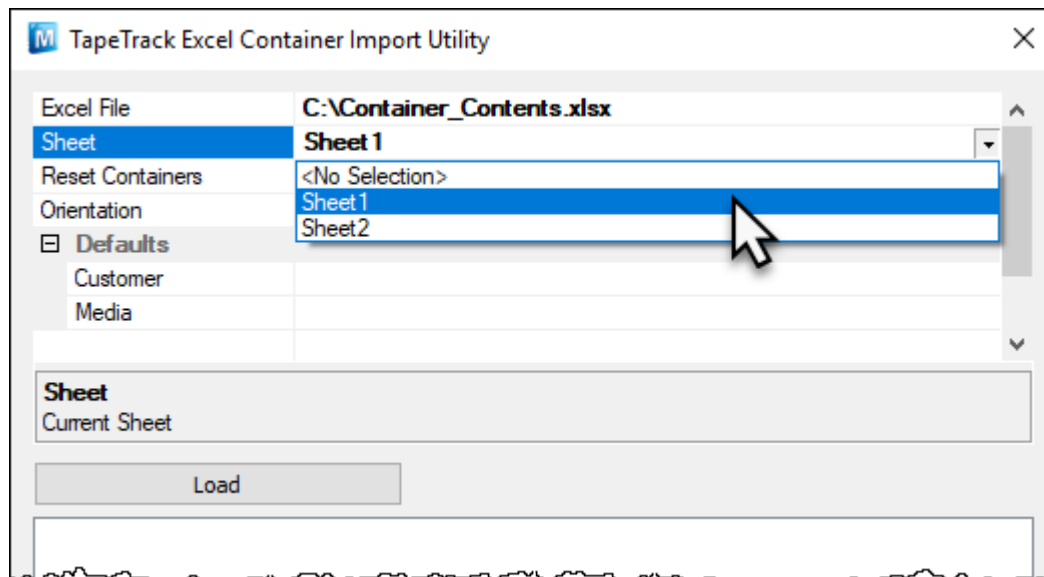


Container barcodes must be either [fully qualified](#), or be distinguishable from all other barcodes and have a corresponding [barcode rule](#) established in TapeMaster

Select Excel file by clicking in the Excel File field and clicking the more button (...) to select the Excel file.

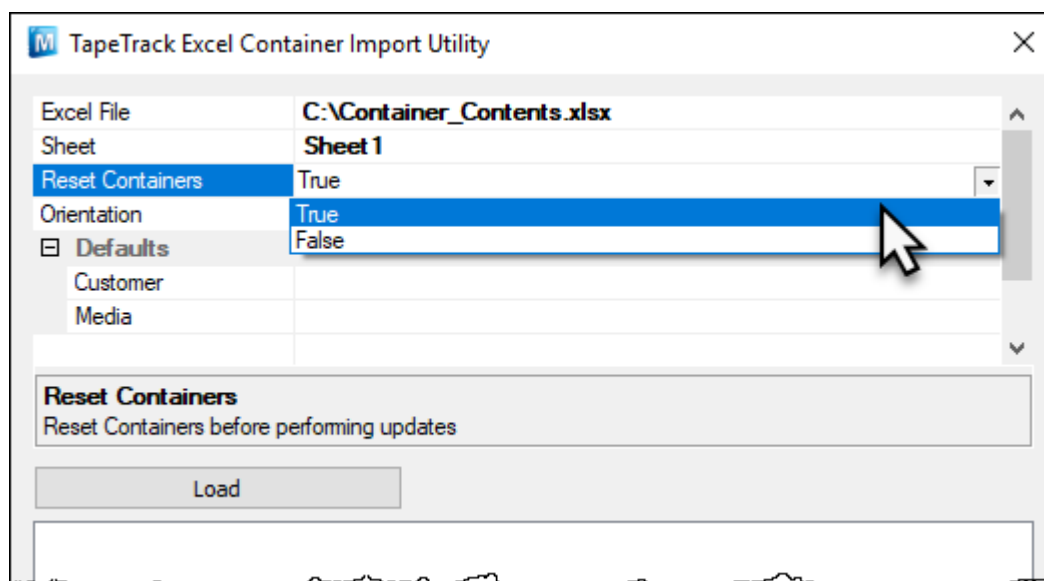


Select the required Excel sheet by clicking the Sheet field and then clicking on the drop box arrow and selecting from the presented options.



Set Reset Containers to:

- True : (Default) Purges containers contained in the Excel sheet before assigning volumes.
- False : Leaves current volumes in the container and adds volumes in Excel sheet.



From the field Orientation select orientation of data in the Excel sheet:

- Horizontal : Containers listed in columns and assigned volumes in rows

A screenshot of an Excel spreadsheet showing a grid of data. The columns are labeled A through K, and the rows are numbered 1 through 16. The data consists of container IDs in the first column and volume numbers in the subsequent columns.

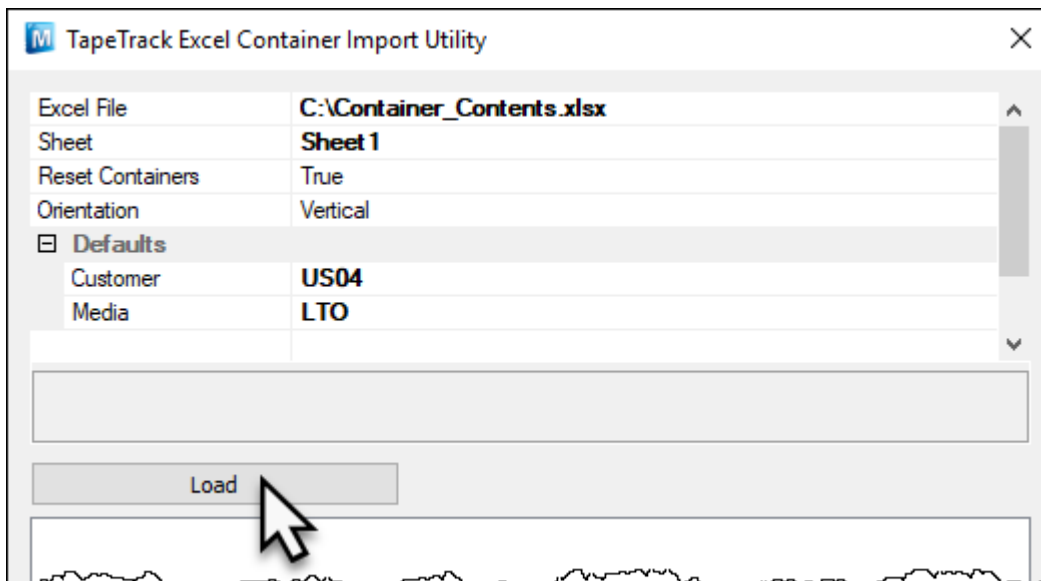
| | A | B | C | D | E | F | G | H | I | J | K |
|----|-------------------|----------|----------|----------|----------|----------|----------|---|---|---|---|
| 1 | US04.CONT.CONT001 | 000011L4 | 000002L4 | 000003L4 | 000004L4 | 000005L7 | 000006L7 | | | | |
| 2 | | | | | | | | | | | |
| 3 | US04.CONT.CONT002 | 000007L7 | 000008L7 | 000009L7 | 000010L7 | 000011L7 | 000012L7 | | | | |
| 4 | | | | | | | | | | | |
| 5 | US04.CONT.CONT003 | 000013L7 | 000014L7 | 000015L7 | 000016L5 | 000017L5 | 000018L5 | | | | |
| 6 | | | | | | | | | | | |
| 7 | US04.CONT.CONT004 | 000019L5 | 000020L5 | 000021L5 | 000022L5 | 000023L5 | 000024L5 | | | | |
| 8 | | | | | | | | | | | |
| 9 | US04.CONT.CONT005 | 000025L5 | 000026L5 | 000027L5 | 000028L5 | 000029L5 | 000030L5 | | | | |
| 10 | | | | | | | | | | | |
| 11 | US04.CONT.CONT006 | 000031L5 | 000032L5 | 000033L5 | 000034L5 | 000035L5 | 000036L5 | | | | |
| 12 | | | | | | | | | | | |
| 13 | US04.CONT.CONT007 | 000037L5 | 000038L5 | 000039L5 | 000040L5 | 000041L5 | 000042L5 | | | | |
| 14 | | | | | | | | | | | |
| 15 | US04.CONT.CONT008 | 000043L5 | 000044L5 | 000045L5 | 000046L5 | 000047L5 | 000048L5 | | | | |
| 16 | | | | | | | | | | | |

- Vertical : Containers listed in rows and assigned volumes in columns

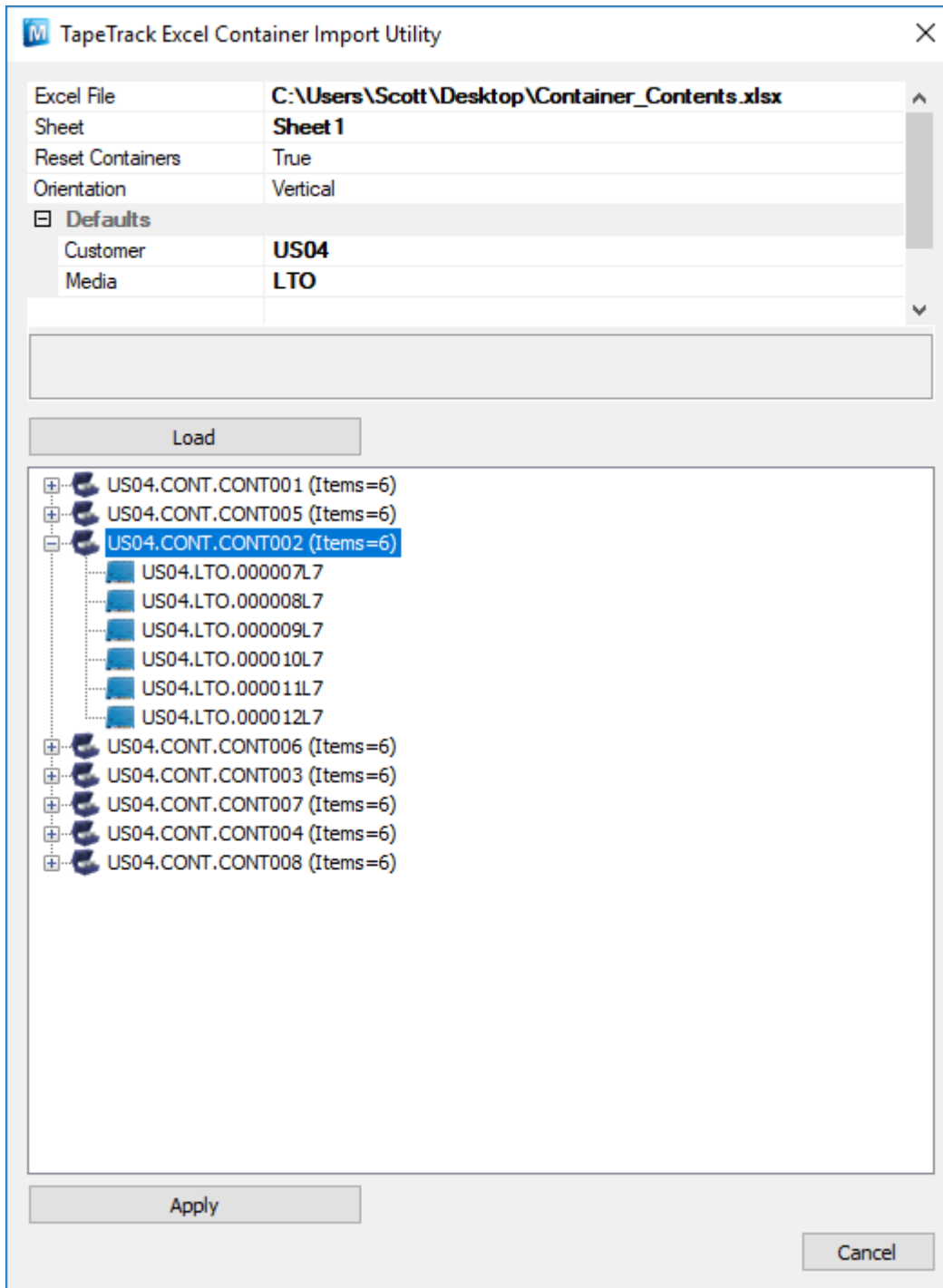
| | A | B | C | D | E | F | G | H |
|----|-------------------|---|-------------------|---|-------------------|---|-------------------|---|
| 1 | US04.CONT.CONT001 | | US04.CONT.CONT002 | | US04.CONT.CONT003 | | US04.CONT.CONT004 | |
| 2 | 00000114 | | 00000717 | | 00001317 | | 00001915 | |
| 3 | 00000214 | | 00000817 | | 00001417 | | 00002015 | |
| 4 | 00000314 | | 00000917 | | 00001517 | | 00002115 | |
| 5 | 00000414 | | 00001017 | | 00001615 | | 00002215 | |
| 6 | 00000517 | | 00001117 | | 00001715 | | 00002315 | |
| 7 | 00000617 | | 00001217 | | 00001815 | | 00002415 | |
| 8 | US04.CONT.CONT005 | | US04.CONT.CONT006 | | US04.CONT.CONT007 | | US04.CONT.CONT008 | |
| 9 | 00002515 | | 00003115 | | 00003715 | | 00004315 | |
| 10 | 00002615 | | 00003215 | | 00003815 | | 00004415 | |
| 11 | 00002715 | | 00003315 | | 00003915 | | 00004515 | |
| 12 | 00002815 | | 00003415 | | 00004015 | | 00004615 | |
| 13 | 00002915 | | 00003515 | | 00004115 | | 00004715 | |
| 14 | 00003015 | | 00003615 | | 00004215 | | 00004815 | |
| 15 | | | | | | | | |
| 16 | | | | | | | | |
| 17 | | | | | | | | |

In the fields under the heading **Defaults**, set Customer and media defaults for the volumes if they are not listed in the spreadsheet as fully qualified barcodes.

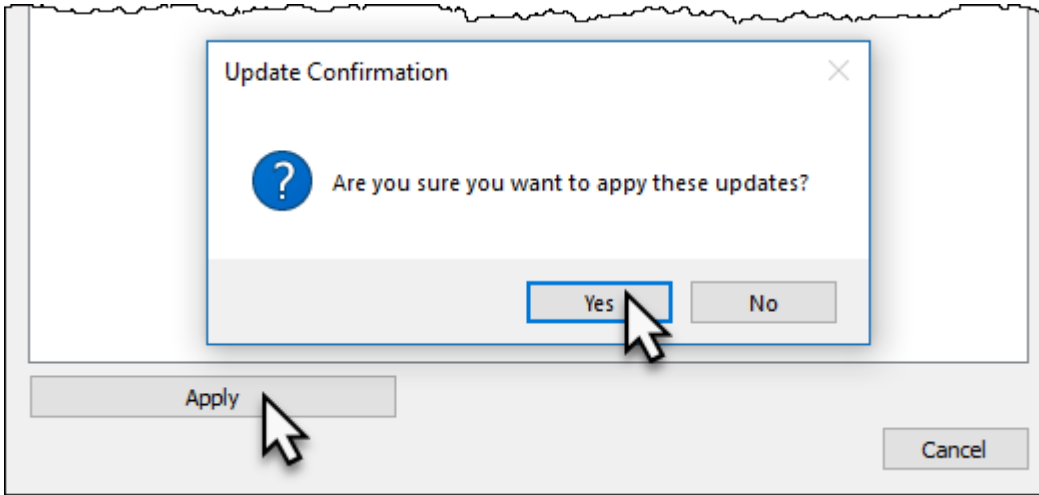
Click Load to load data from the spreadsheet.



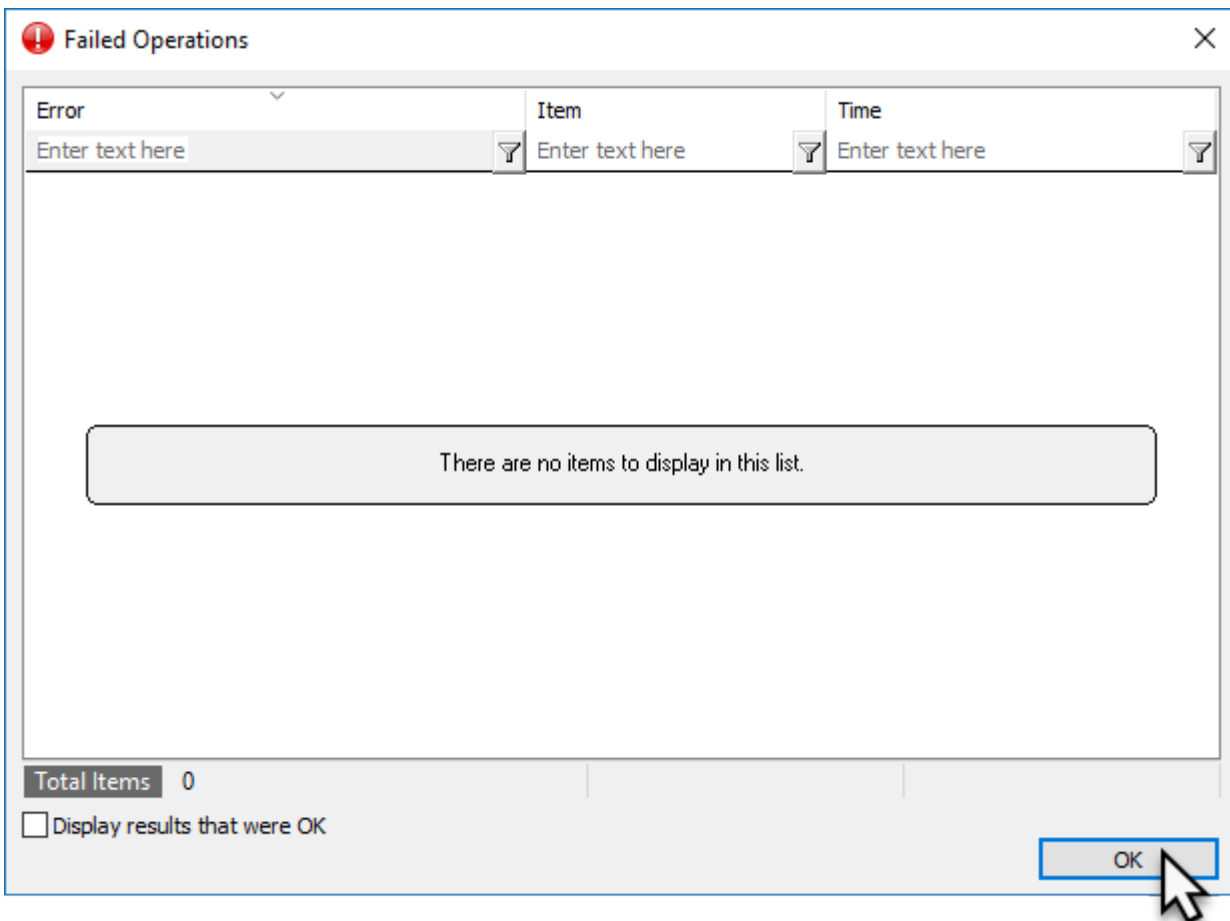
Checking volume quantities assigned to each container are correct. If required, you can view each container's listed assigned volumes by clicking the + on the left of each container.



Click **Apply** to upload data to the TapeTrack Server Database and **Yes** to commit the data upload.

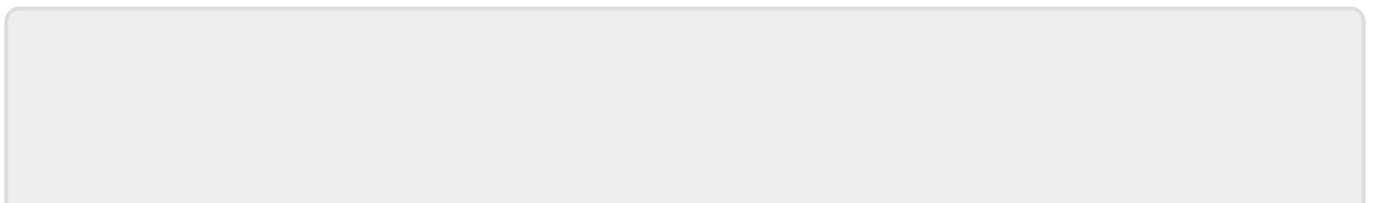


When uploading has finished, the **Failed Operations** window will be displayed with any errors encountered. Close this window by either clicking OK or the X at the top right.



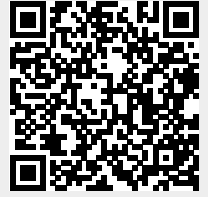
Close the import utility window by clicking Cancel or or the X at the top right.

Click on the Customer Tree and press F5 to update display.



From:
<https://rtfm.tapetrack.com/> - **TapeTrack Documentation**

Permanent link:
https://rtfm.tapetrack.com/technote/excel_import_container?rev=1540429773



Last update: **2025/01/21 22:07**