

# Create Export File

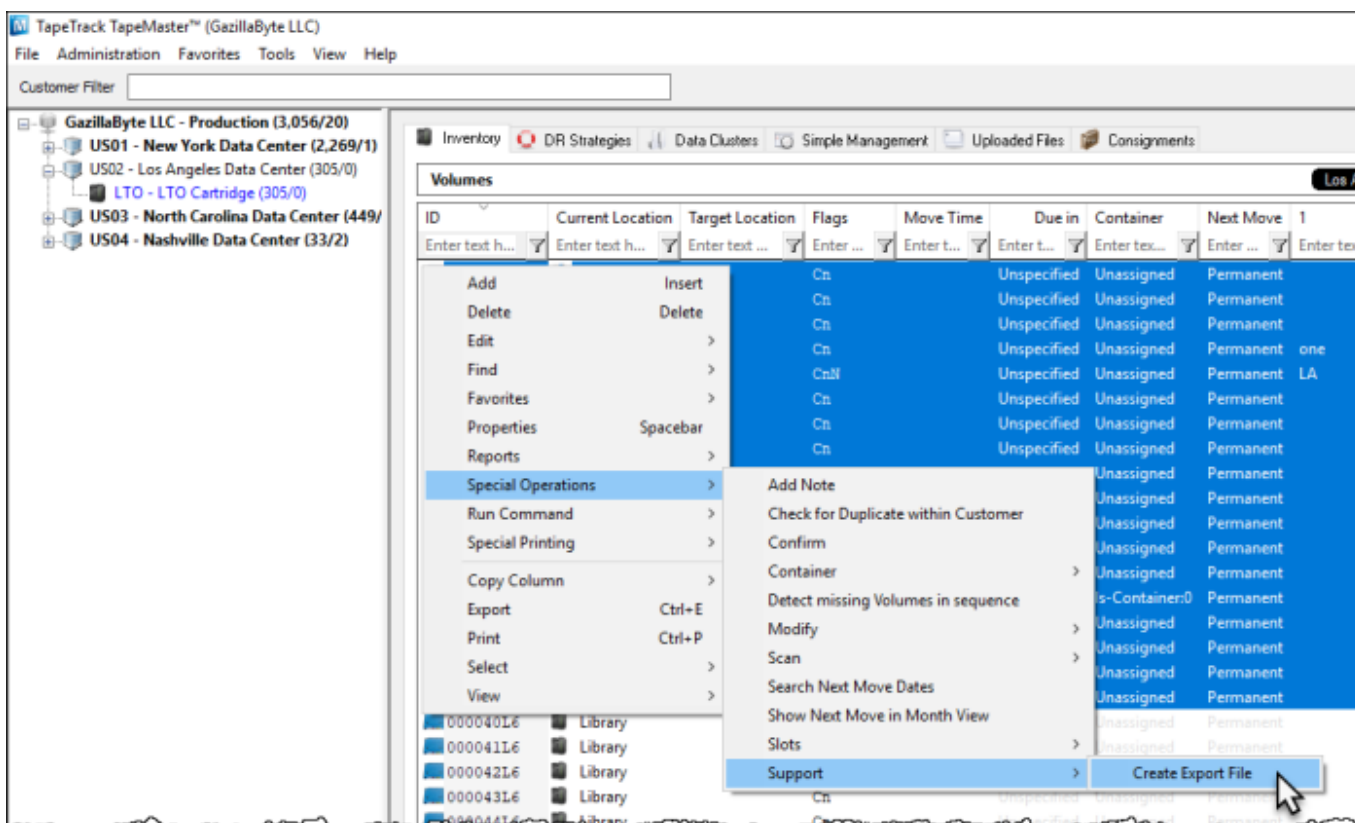
Creates an export file of selected volumes, including the volumes history, to assist the support desk to diagnose volume movement discrepancies.

## Selecting Volumes For Export

Select all volumes by right-clicking in the inventory window and select **Select→All**, or using **shift+click** and/or **control+click** select the range of volumes required.

## Exporting To File

Right click highlighted **Volumes** and select **Special Operations → Support → Create Export File** and save file to a known location.



## Sending File To The Helpdesk

Send the file to the [TapeTrack Helpdesk](#) with details regarding the issue you are currently experiencing.

From:

<https://rtfm.tapetrack.com/> - **TapeTrack Documentation**

Permanent link:

[https://rtfm.tapetrack.com/technote/export\\_file?rev=1548718060](https://rtfm.tapetrack.com/technote/export_file?rev=1548718060)

Last update: **2025/01/21 22:07**

