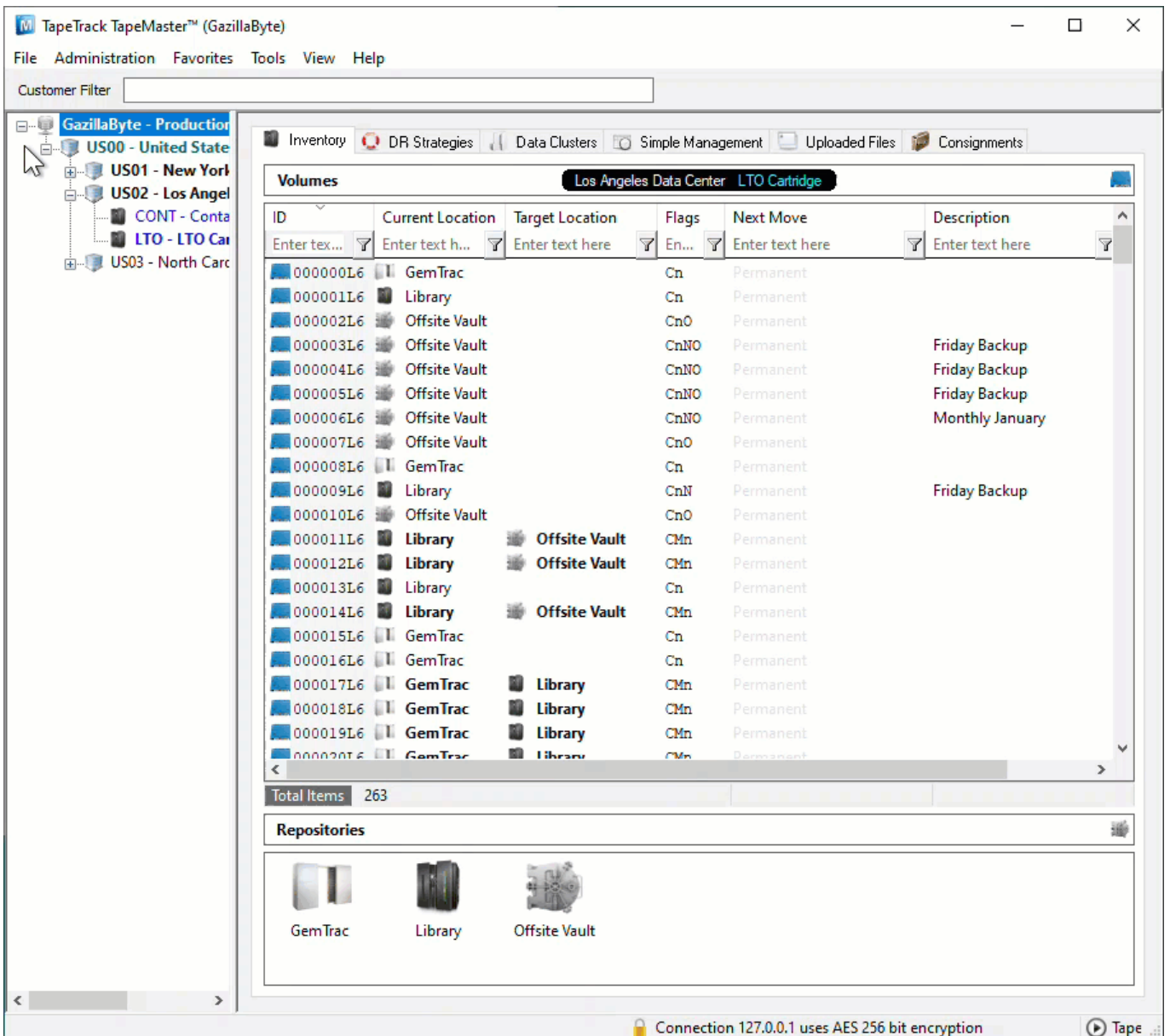



Export License

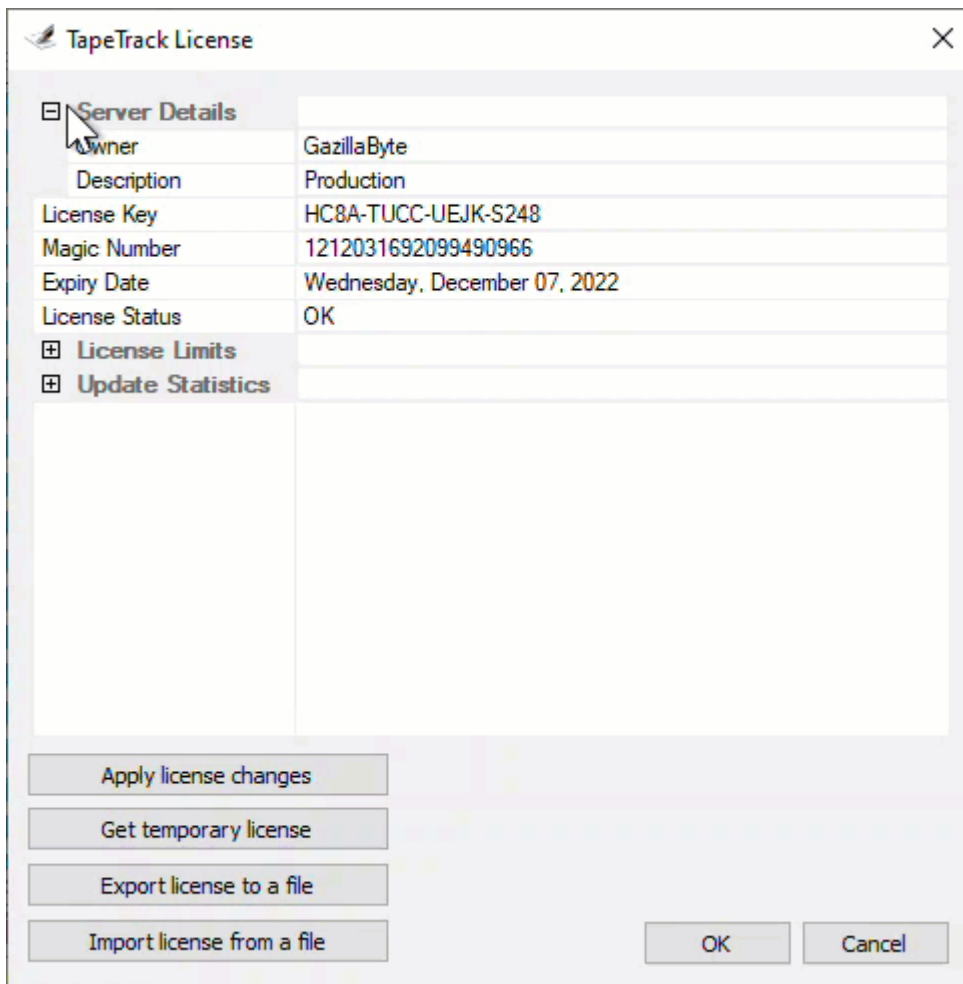
While logged into TapeMaster as [tapemaster](#), or [user-ID with tapemaster rights](#)

From the menu click **Help** → **Framework Server Licensing** to open the TapeTrack License window.

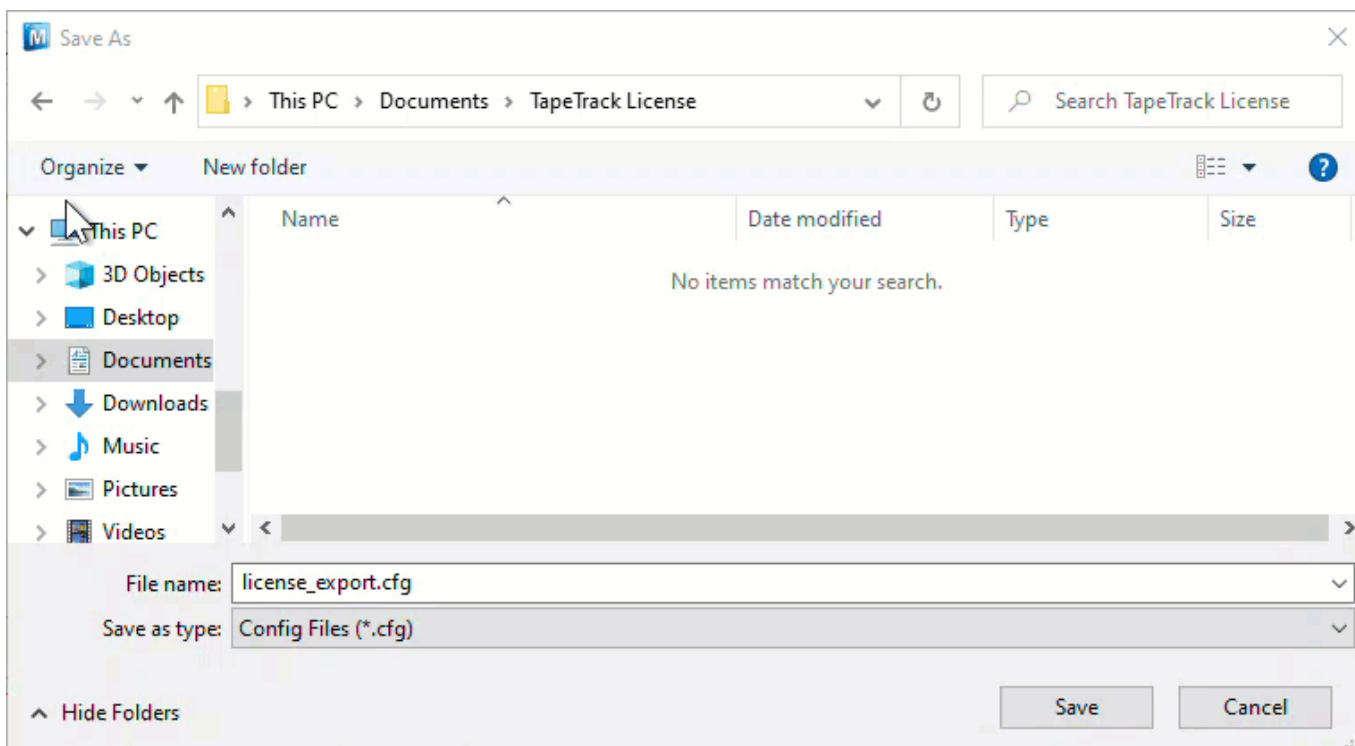


 If the menu option **Framework Server Licensing** is greyed out and inaccessible, you do not have sufficient privileges (tapemaster rights) to alter the software license

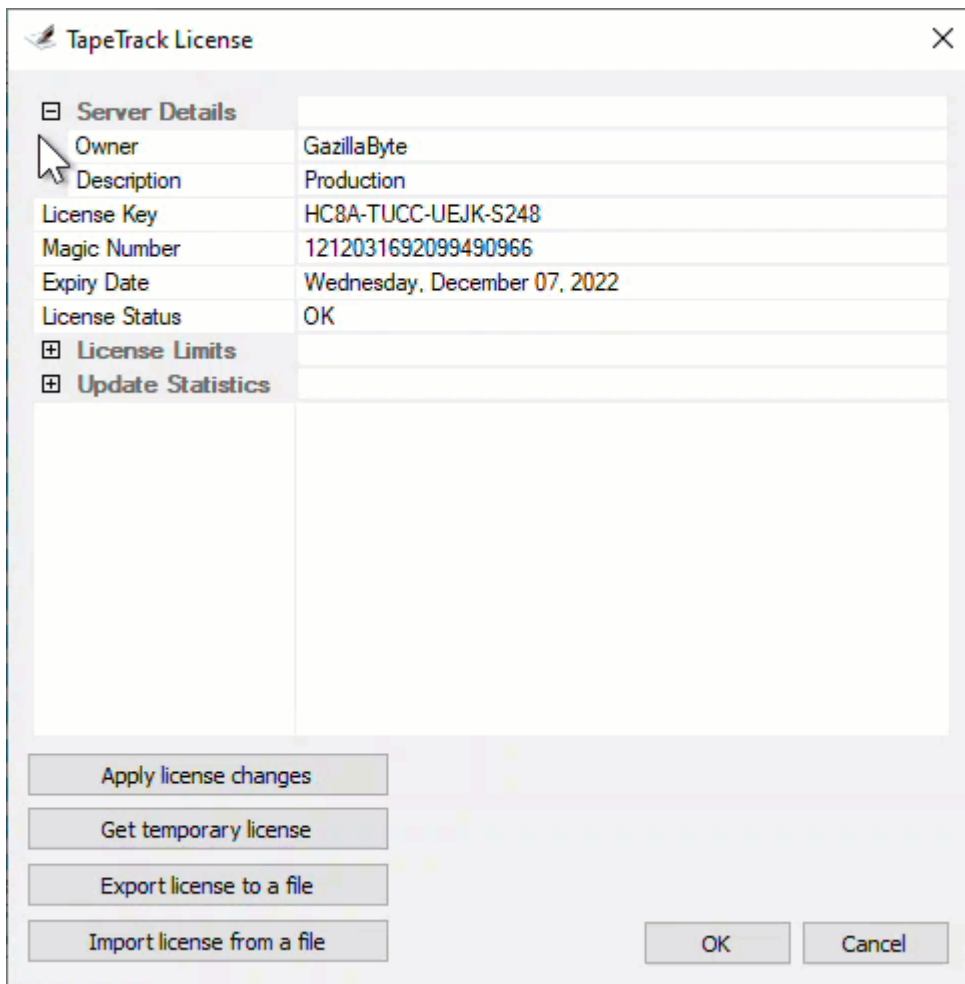
Click **Export license** to a file to open the Windows file save dialog.



Save the file with a descriptive name (e.g. current_license.cfg) in a suitable location. Ensure that the file saves with a file extension .cfg as some operating systems may default to .txt



Click OK to close the TapeTrack License window if you are finished, or select other options to continue if required.



[technote](#), [license](#), [export-license](#), [tapemaster](#)

From:
<https://rtfm.tapetrack.com/> - **TapeTrack Documentation**

Permanent link:
https://rtfm.tapetrack.com/technote/export_license

Last update: **2025/01/21 22:07**

