

# Hiding Customers

Customers can be hidden, or removed from view, in TapeTrack TapeMaster, cleaning up the Customer Tree display without needing to delete old or unused Customer-ID's and their associated data.

Hiding Customers from display is a two part process:

- Setting the required Customer's Hide Customer Option to True.
- Removing the Hidden Customer from display via the TapeTrack TapeMaster Preferences.

## Customer Properties Options

To Hide a Customer, in TapeMaster right click the required Customer-ID and select Properties.

The screenshot shows the TapeTrack TapeMaster interface for GazillaByte LLC. On the left is a customer tree with the following structure:

- GazillaByte LLC - Product
  - US00 - United States
    - US01 - New York
    - US02 - Los Angeles
      - CONT - Contai
      - LTO - LTO Car
    - US03 - North Carolina

A mouse cursor is hovering over the 'CONT - Contai' customer. The main window displays a 'Volumes' table for the 'Los Angeles Data Center LTO Cartridge'. The table has the following columns: ID, Current Location, Target Location, Next Move, and Description. The data rows are as follows:

| ID       | Current Location | Target Location | Next Move | Description |
|----------|------------------|-----------------|-----------|-------------|
| 000000L6 | Offsite Vault    | Library         | Permanent |             |
| 000001L6 | Library          | Offsite Vault   | Permanent |             |
| 000002L6 | Library          | Offsite Vault   | Permanent |             |
| 000003L6 | Library          |                 | Permanent |             |
| 000004L6 | Library          |                 | Permanent |             |
| 000005L6 | Library          | Offsite Vault   | Permanent |             |
| 000006L6 | Library          | Offsite Vault   | Permanent |             |
| 000007L6 | Library          | Offsite Vault   | Permanent |             |
| 000008L6 | Library          |                 | Permanent |             |
| 000009L6 | Library          |                 | Permanent |             |
| 000010L6 | Library          |                 | Permanent |             |
| 000011L6 | Offsite Vault    |                 | Permanent |             |
| 000012L6 | Library          |                 | Permanent |             |
| 000013L6 | Library          |                 | Permanent |             |
| 000014L6 | Library          |                 | Permanent |             |
| 000015L6 | Library          |                 | Permanent |             |

Below the table, it shows 'Total Items 1,585'. At the bottom, there are icons for 'Offsite Vault' and 'Library' repositories. The status bar at the bottom indicates 'Connection 127.0.0.1 uses AES 256 bit encryption'.

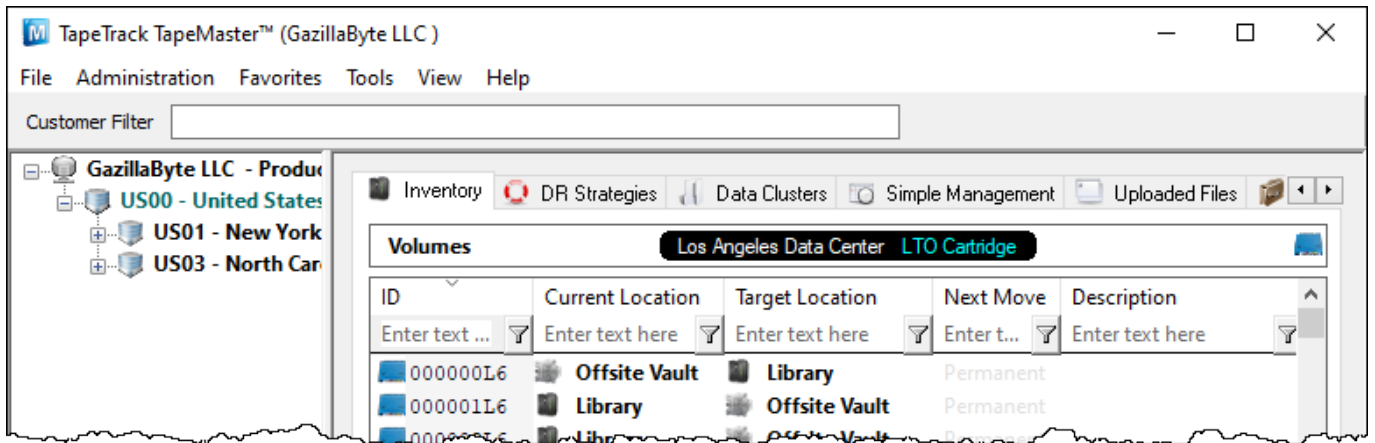
From the Edit Customer window select the Options tab, set Hide Customer Option to True and

click Save to update data.

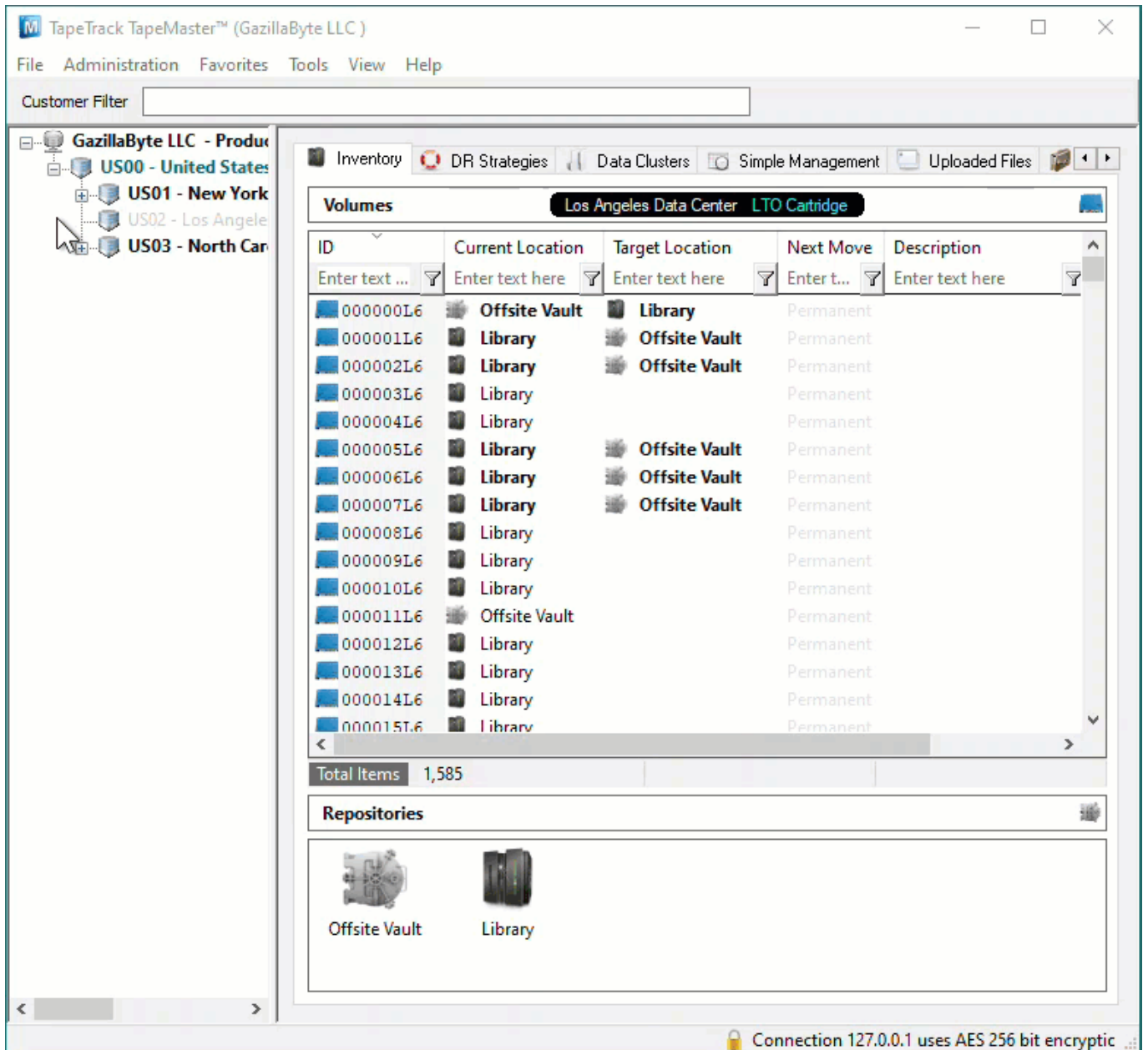


## Display Or Hide Customer From Customer Tree

Depending on TapeMaster Preferences, the Hidden Customer can be set to either be greyed out and inactive (not clickable) or completely removed from display. Having the Hidden Customer greyed out is the default installation setting, how your display functions will depend on what you have the preferences set.



To have the Hidden Customer displayed in a greyed out format, from the Main Menu, click File > Preferences

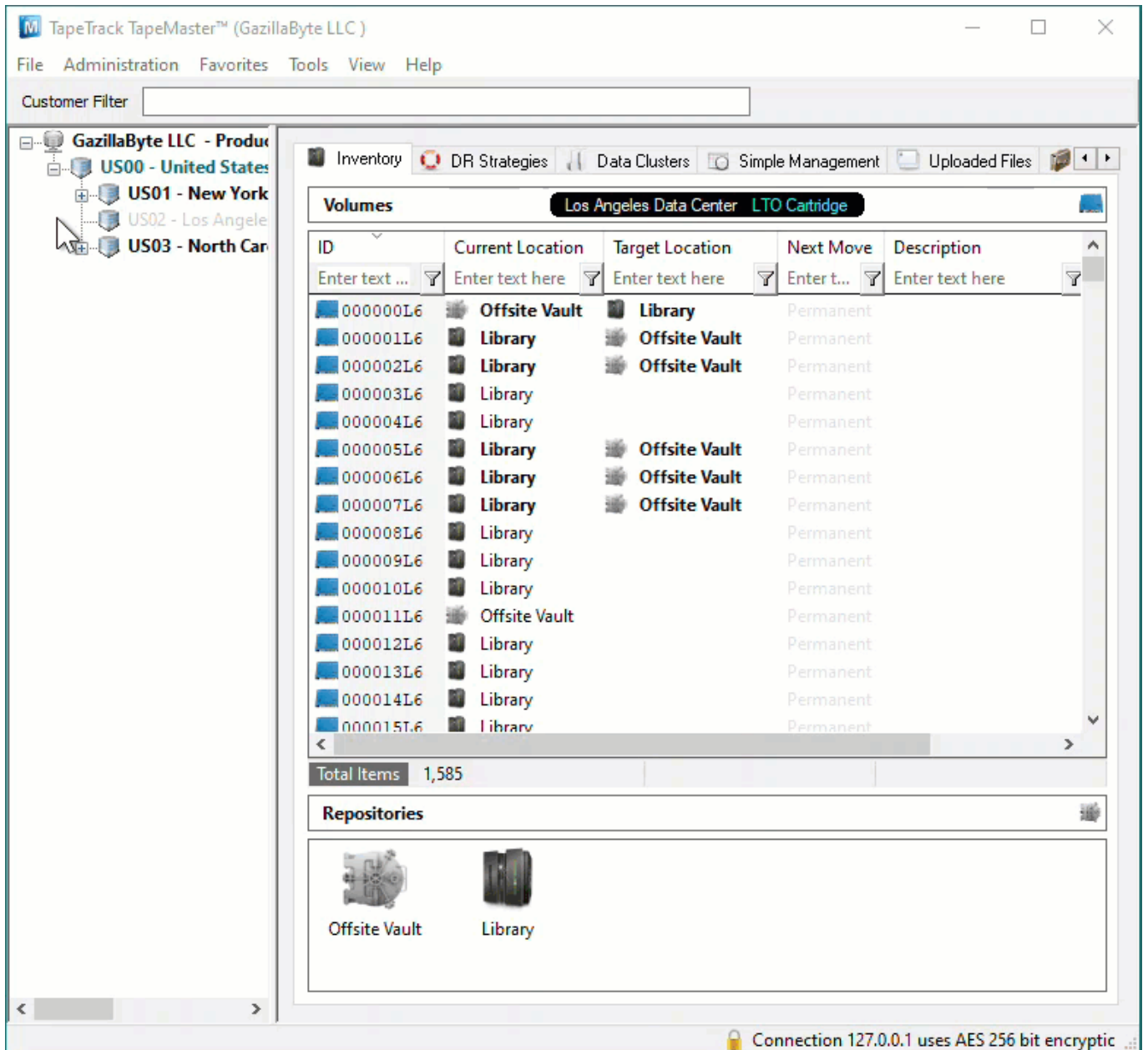


In the Options window, set Show Hidden Customers to True and click OK to update the data.

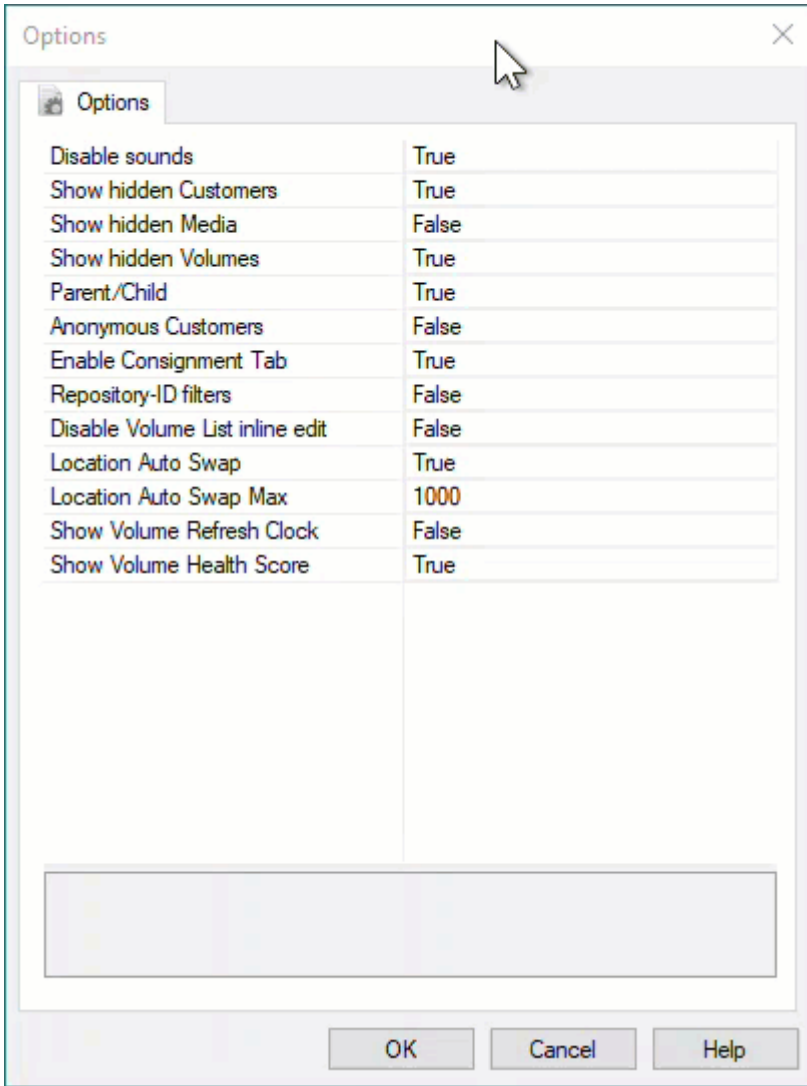


Click anywhere in the Customer Tree to set focus and on your keyboard click F5 to update the display.

To have the Hidden Customer removed from display from the Main Menu, click File > Preferences



In the Options window, set Show Hidden Customers to False click OK to update the data.

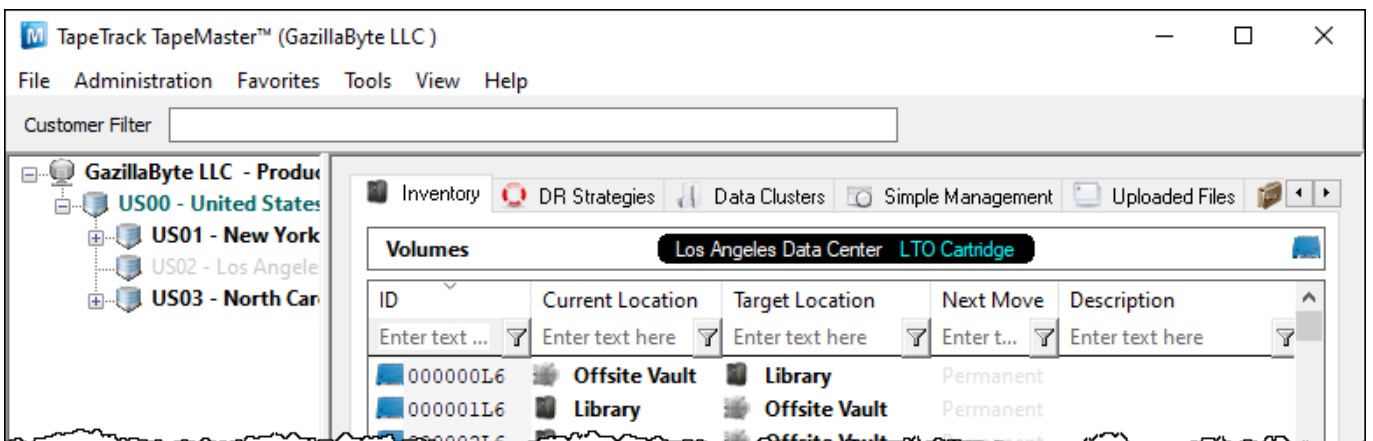


Click anywhere in the Customer Tree to set focus and on your keyboard click F5 to update display.

## Unhiding Customers

Unhiding Customers is essentially the same procedure to hiding Customers but in the reverse order.

If you can see the hidden Customers but in a greyed out format you can skip this step.

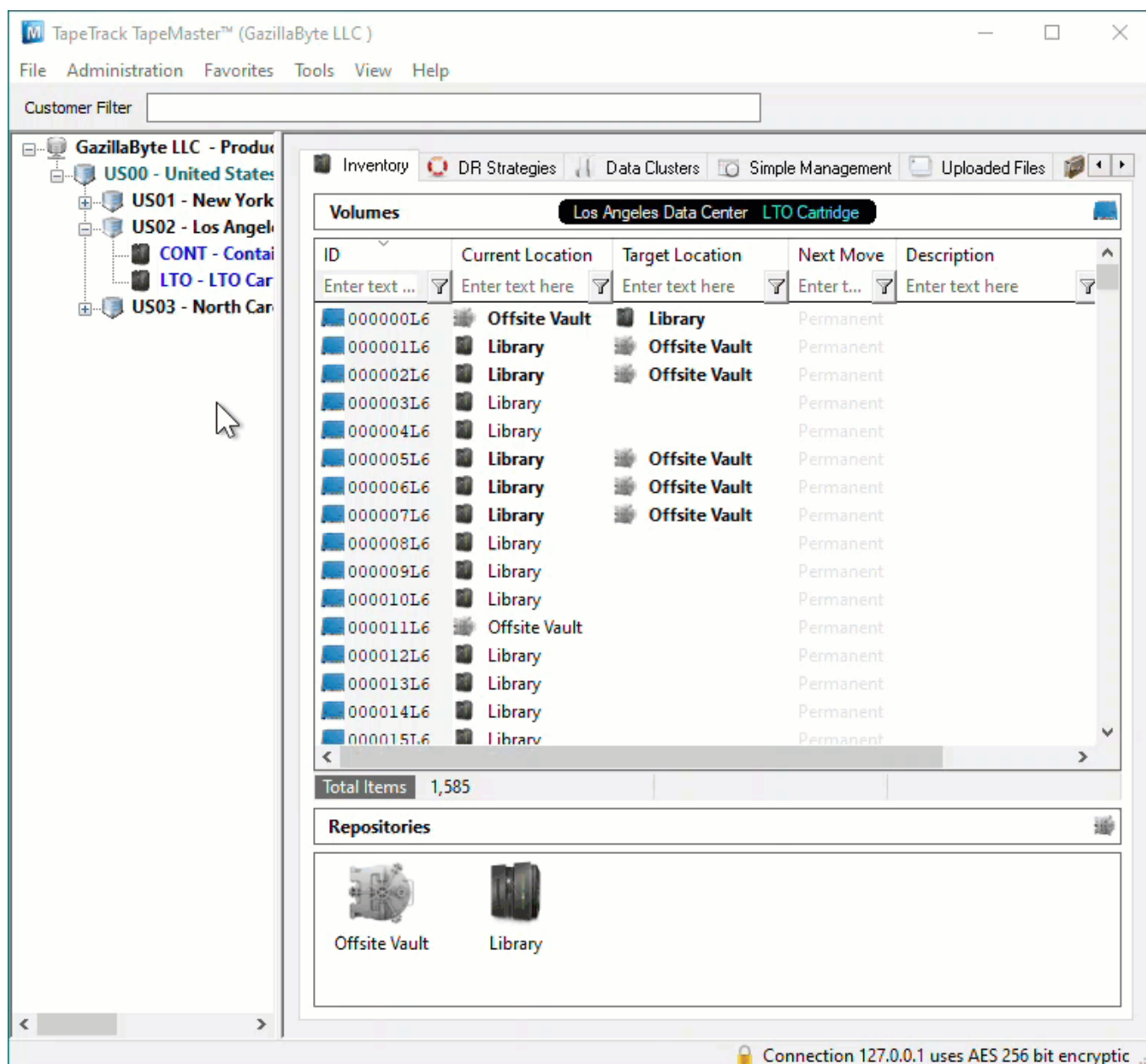


If you can't see the Hidden Customer, from the Main Menu click **File > Preferences** to open the **Options** tab. Set the Option **Show Hidden Customers** to **True**. Click **OK** to update the settings.

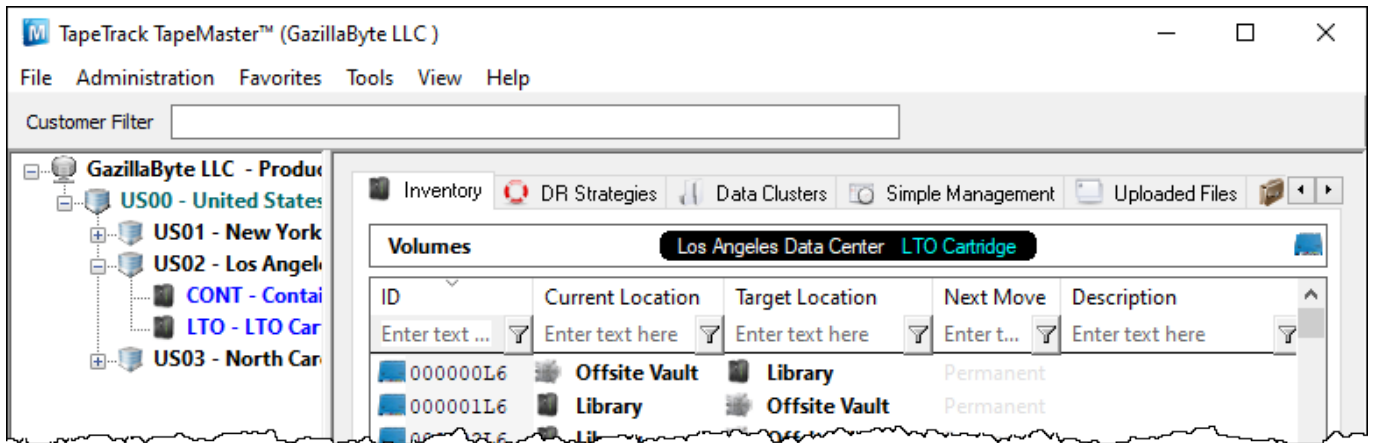
Any hidden Customers will now show in the Customer Tree as a greyed out listing.

Right click on the required Hidden Customer and select **Properties** to open the **Edit Customer** window.

Select the **Options** tab and set the Option **Hide Customer** to **False** and click **OK** to update the settings.



The Customer will no longer be hidden.



If you have other Hidden Customers that you want removed from view remember to set the Show hidden Customers to False from the Server Options accessed from the Main Menu by clicking File > Preferences

[hidden](#), [media](#), [technote](#), [update doco](#)

From: <https://rtfm.tapetrack.com/> - **TapeTrack Documentation**

Permanent link: [https://rtfm.tapetrack.com/technote/hiding\\_customer\\_ids?rev=1626825784](https://rtfm.tapetrack.com/technote/hiding_customer_ids?rev=1626825784)

Last update: **2025/01/21 22:07**

