

# Hiding Media Types

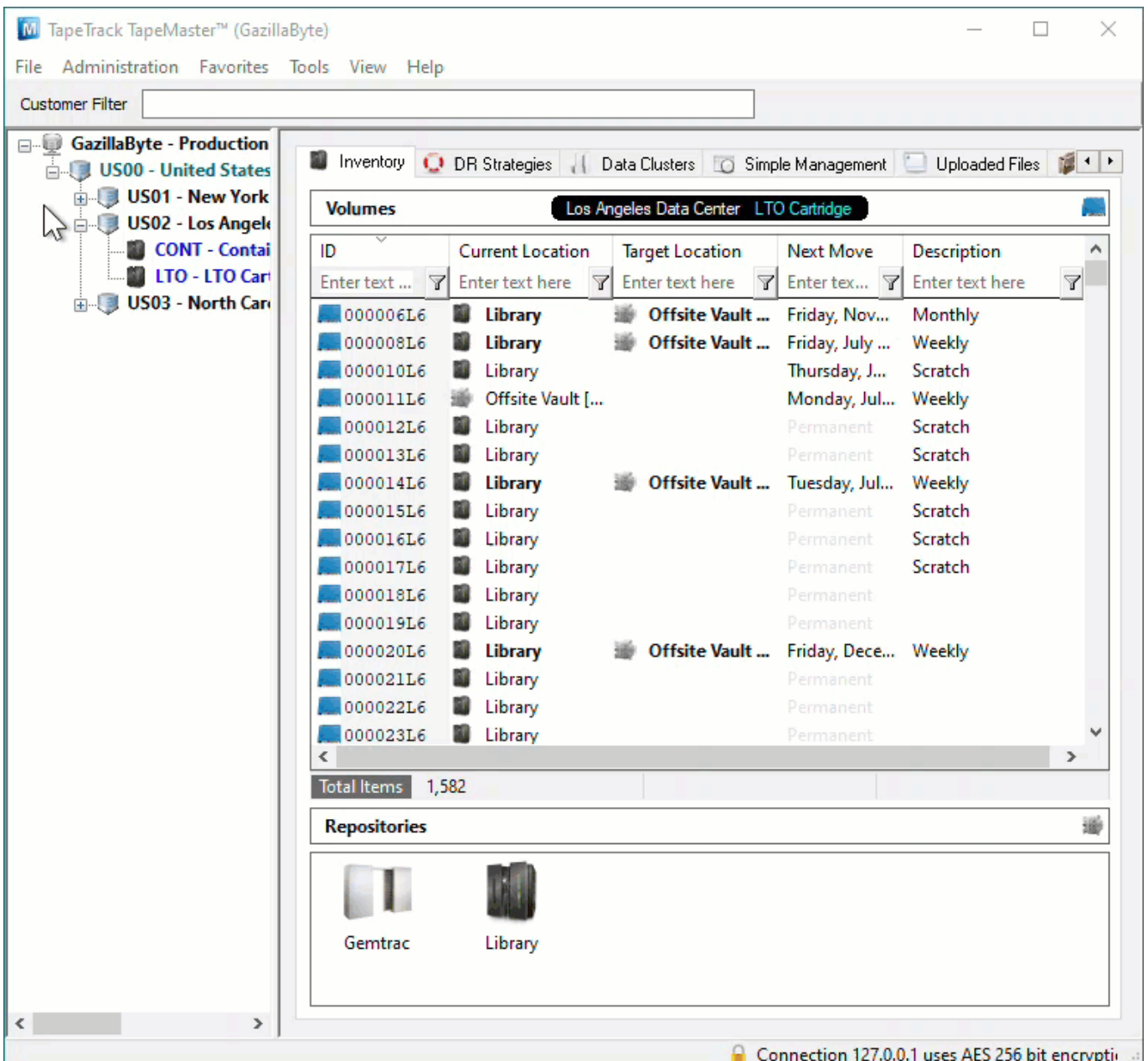
Media Types can be hidden, or removed from view, in TapeMaster, cleaning up the Customer Tree display without needing to delete old or unused Media-ID's and their associated data.

Hiding Media Types is a two part process:

- Setting the required Media's Hide Media Option to True.
- Removing the Hidden Media Type from display via the TapeMaster Preferences.

## Media Properties Options

To hide a Media Type, expand the Customer in the Customer Tree, right click on the required Media Type and select Properties.



Set the Hide Media to True and click Save to update data.



## Display Or Hide Media Type From Customer Tree

Depending on TapeMaster Preferences, the Hidden Media Type can be set to either be greyed out and inactive (not clickable) or completely removed from display. Having the Hidden Media Type greyed out is the default installation setting, how your display functions will depend on what you have the preferences set.

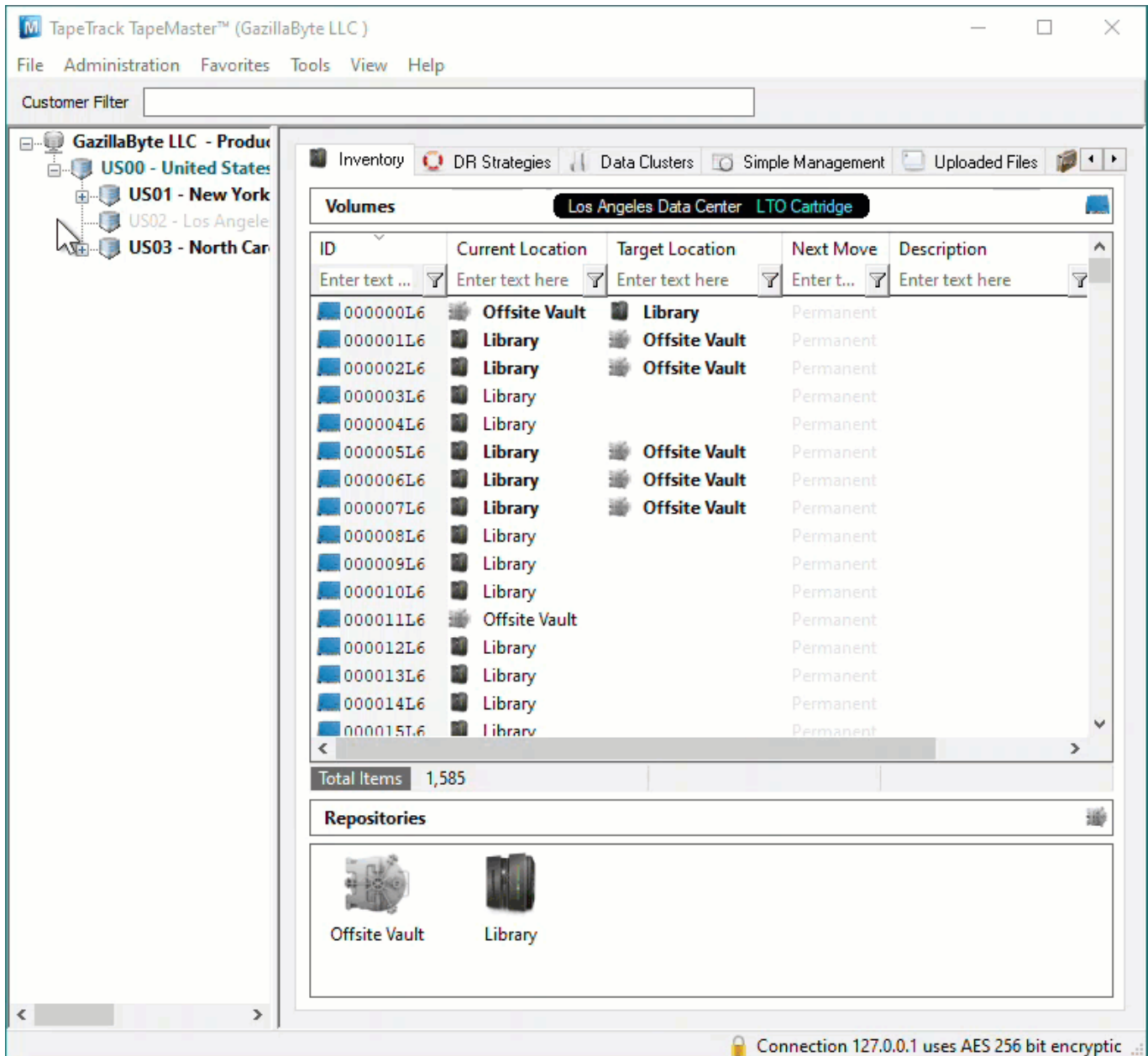
### Hidden Media Type Greyed Out

To have the hidden Media Type displayed in a greyed out format, from the main menu, click File >

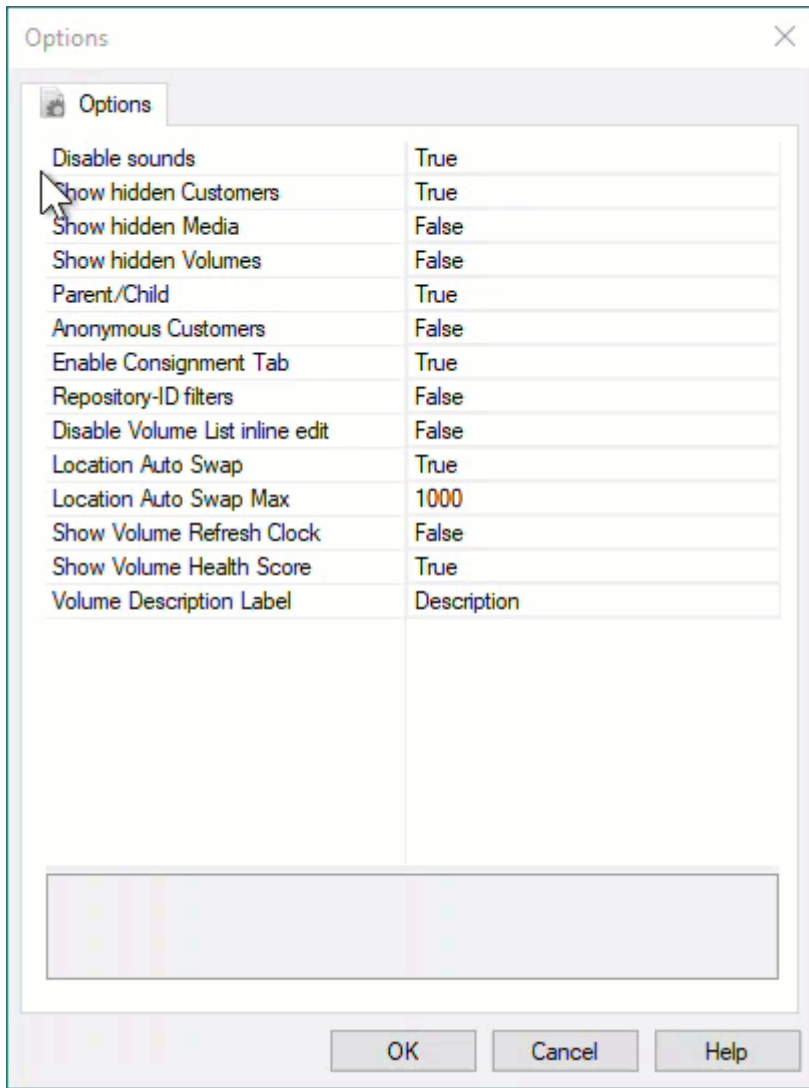
# Preferences

The screenshot shows the TapeTrack TapeMaster™ (GazillaByte LLC) application window. The interface includes a menu bar (File, Administration, Favorites, Tools, View, Help), a Customer Filter input field, and a navigation pane on the left with a tree view of the organization structure: GazillaByte LLC - Products, US00 - United States, US01 - New York, US02 - Los Angeles, CONT - Containers, LTO - LTO Cartridges, and US03 - North Carolina. The main area displays a 'Volumes' table for the 'Los Angeles Data Center' and 'LTO Cartridge' media type. The table has columns for ID, Current Location, Target Location, Next Move, and Description. Below the table, it shows 'Total Items: 1,585' and a 'Repositories' section with icons for 'Offsite Vault' and 'Library'. A status bar at the bottom right indicates 'Connection 127.0.0.1 uses AES 256 bit encryption'.

ID	Current Location	Target Location	Next Move	Description
000000L6	Offsite Vault	Library	Permanent	
000001L6	Library	Offsite Vault	Permanent	
000002L6	Library	Offsite Vault	Permanent	
000003L6	Library		Permanent	
000004L6	Library		Permanent	
000005L6	Library	Offsite Vault	Permanent	
000006L6	Library	Offsite Vault	Permanent	
000007L6	Library	Offsite Vault	Permanent	
000008L6	Library		Permanent	
000009L6	Library		Permanent	
000010L6	Library		Permanent	
000011L6	Offsite Vault		Permanent	
000012L6	Library		Permanent	
000013L6	Library		Permanent	
000014L6	Library		Permanent	
000015L6	Library		Permanent	

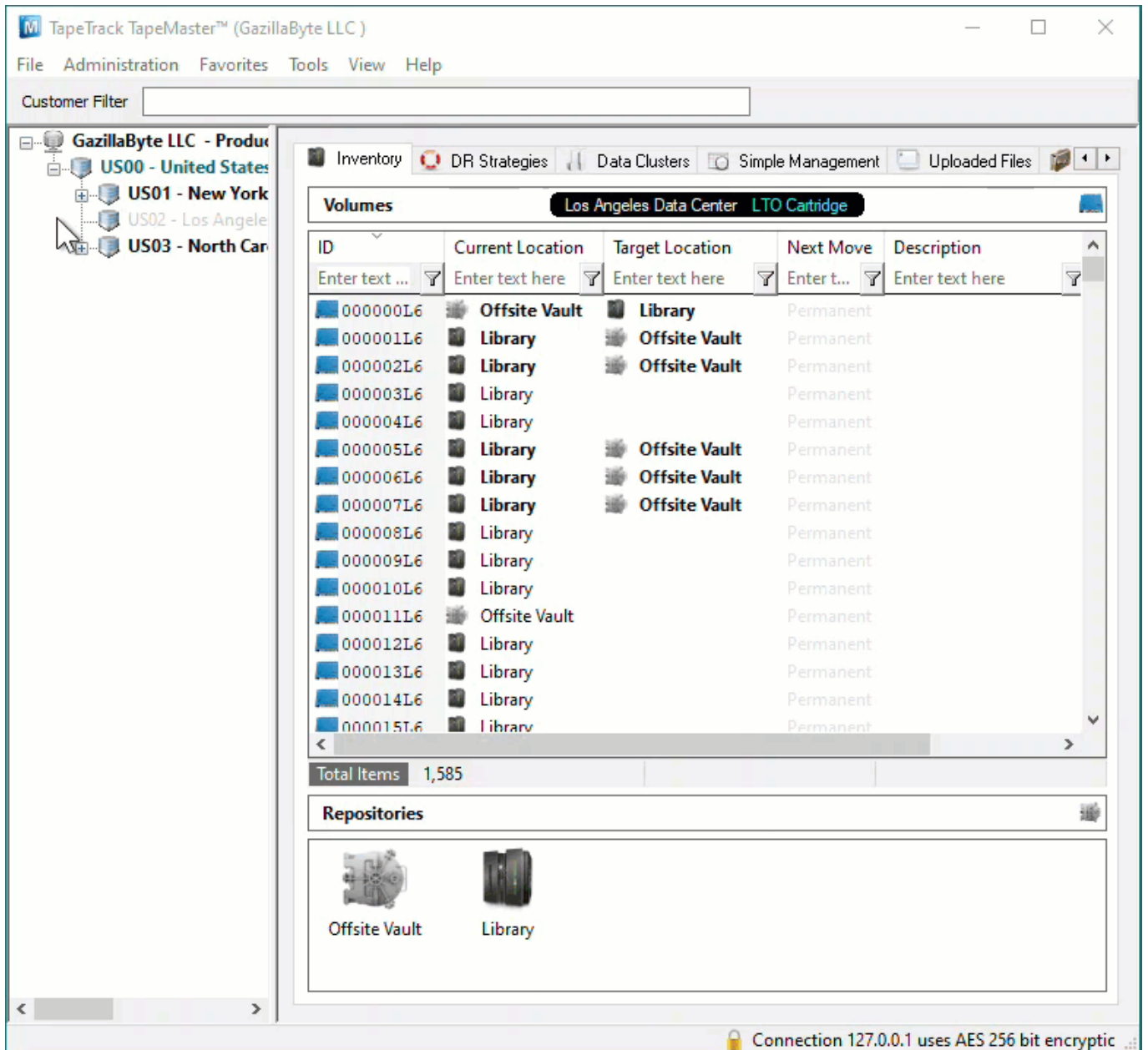


In the options window, set Show Hidden Media to True and click OK to update data.

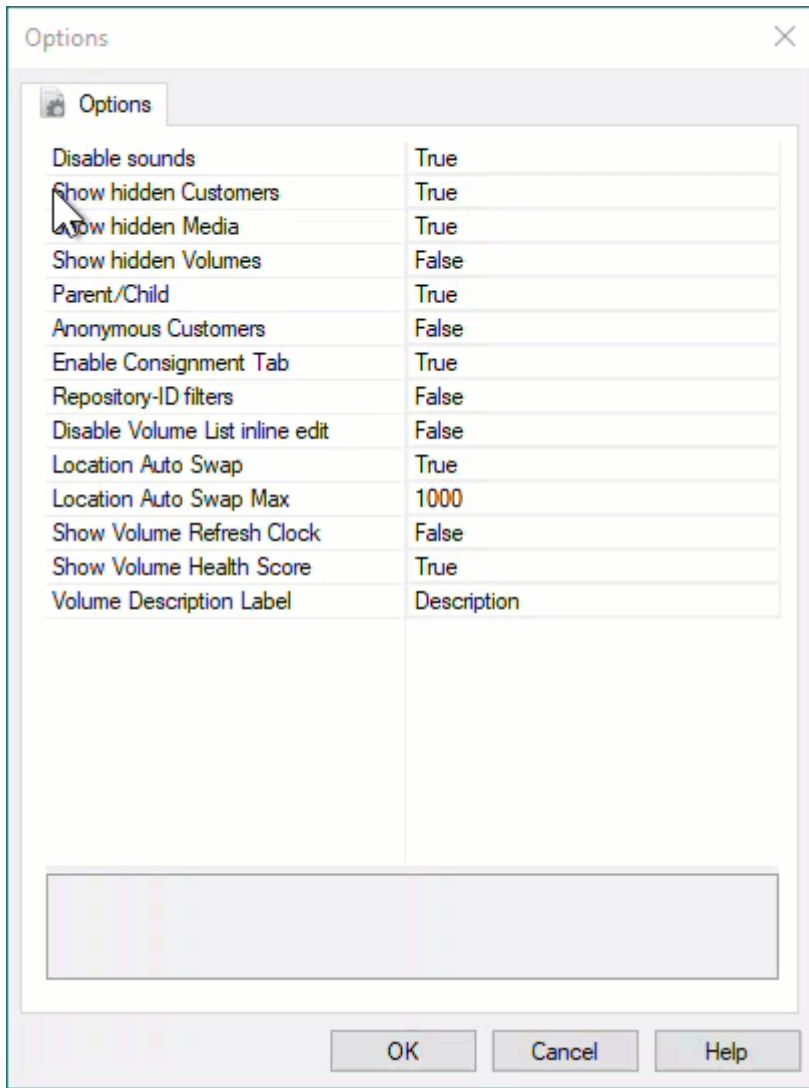


## Hidden Media Type Removed From Display

To have the hidden Media Type removed from display, from the main menu, click File > Preferences



In the options window, set Show Hidden Media to False and click OK to update data.



# Unhiding Media Types

[update doco](#), [hiding](#), [media](#), [technote](#)

From: <https://rtfm.tapetrack.com/> - **TapeTrack Documentation**

Permanent link: [https://rtfm.tapetrack.com/technote/hiding\\_media\\_ids?rev=1626830947](https://rtfm.tapetrack.com/technote/hiding_media_ids?rev=1626830947)

Last update: **2025/01/21 22:07**

