

Desktop Login Options

Desktop Direct Access

Users can log directly into TapeTrack Desktop programs using a correct and active TapeTrack User-ID and Password.

Native passwords are MD5 encoded and stored in the TapeTrack database in their encrypted format..

To login directly you will need to [create a User](#) and password using the Group/User Administration window.



If a User attempts to login to TapeTrack with an incorrect password for more than five times consecutively, the User-ID will have access revoked. To [regain access you will need to reset the User-ID password](#).

Active Directory Access

Active Directory access gives a User the ability to login using their Active Directory credentials.

When authenticating via Active Directory, the password sent to the TapeTrack Framework Server will then be sent to the Windows Domain Controller for authentication, for this reason the password can not be MD5 encoded. When logging in using Active Directory, the No MD5 checkbox on the login window must be checked.

A screenshot of the 'Logon' window in TapeTrack. The window has a title bar with a lock icon and the word 'Logon'. On the left is a large blue padlock icon. On the right, there is instructional text: 'Connection to this TapeTrack Server is restricted to authorized users only. Please select your TapeTrack Server and enter your credentials. All access attempts and successful connections will be recorded.' Below this, there are fields for 'Server' (a dropdown menu showing 'Local'), 'User or Email' (a text box with 'username'), and 'Password' (a text box with masked characters). There are also two checkboxes: 'No MD5 (required for Active Directory authentication)' which is checked, and 'Save User History' which is unchecked. At the bottom right are 'OK' and 'Cancel' buttons.

For this function to be accessible the TapeTrack User-ID must match their Active Directory user name and the Active Domain details entered in their User-ID identity tab in the field AD Domain.

If the field Require AD Group is set to False the User may login using either their Active Domain credentials or using their TapeTrack User-ID and password. If the field Require AD Group is set to True the User can only login using their Active Domain credentials.

Add New User

Identity

IP Ranges

Access

Identity

IDAD-username

Nameusername

Group

IDdoco

Role0: Documentation

Options

Administrative rightsFalse

Scan-In OnlyFalse

DisabledFalse

No ScannerFalse

No Time-OutFalse

tapemaster rightsFalse

Allow access inheritanceFalse

CertifyFalse

AD Domaintapetrack.gazillabyte.com

Require AD GroupTrue

Client Access

TapeMasterTrue

LiteTrue

CheckpointFalse

SyncTrue

Details

Email Addressmyemail@gazillabyte.com

Description

Defaults

Customer-ID<No Selection>

Save

Cancel

Help

Image shows sample data to illustrate where to enter the required information for Active Directory authentication. You will need to insert your information to create a successful connection.

See [Adding and Updating User Information](#) for more detailed information on adding Users.

Active Directory Group Access

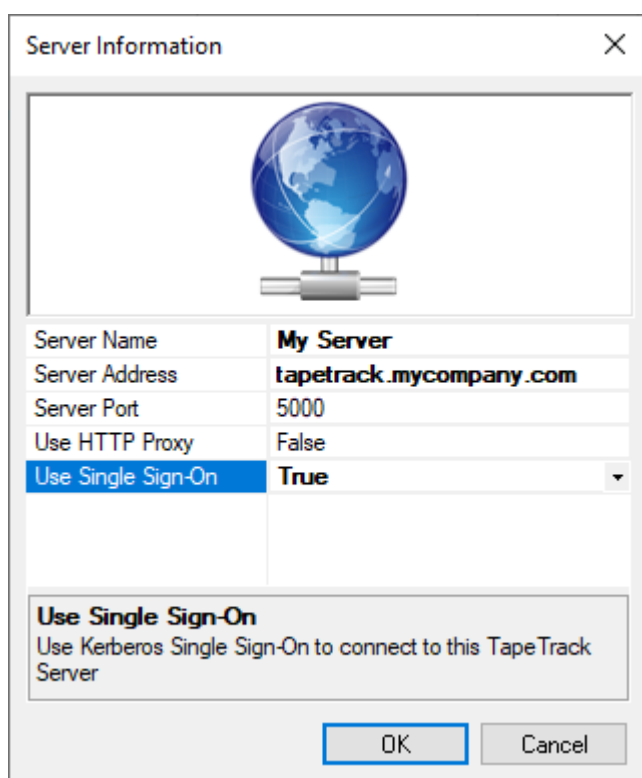
Kerberos Single Sign On

Having Kerberos Single Sign On enabled will allow TapeTrack to automatically authenticate the User using Windows Active Domain credentials used to login to their computer without having to login to TapeTrack individually.

To enable Kerberos Single Sign On, when [setting up the connection](#) set Use Single-Sign-On field to True.

For this function to be accessible the TapeTrack User-ID must match their Active Directory user name and the Active Domain details entered in their User-ID identity tab in the field AD Domain.

As this function is based on a connection setup for each client computer, it can be enabled or disabled per computer as required.



See [setting up the connection](#) for more details on adding a new connection.

[technote](#), [desktop](#), [master](#), [lite](#), [checkpoint](#), [connection](#)

From:
<https://rtfm.tapetrack.com/> - **TapeTrack Documentation**

Permanent link:
https://rtfm.tapetrack.com/technote/login_options

Last update: **2025/01/21 22:07**

