

Desktop Login Options

Desktop Direct Access

Users can log directly into TapeTrack Desktop programs using a correct and active TapeTrack User-ID and Password.

Native passwords are MD5 encoded and stored in the TapeTrack database in their encrypted format..

To login directly you will need to [create a User](#) and password using the Group/User Administration window.



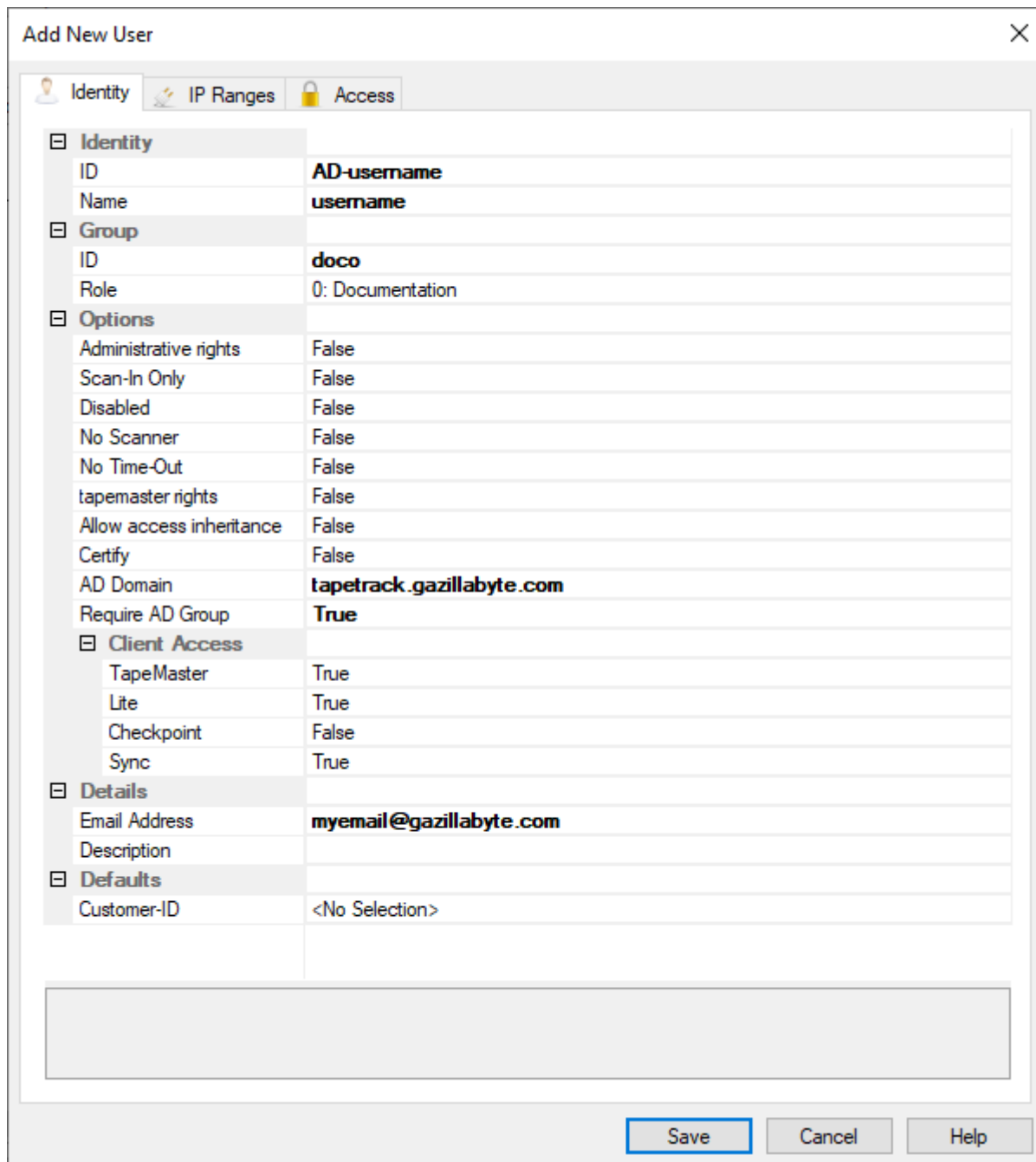
If a User attempts to login to TapeTrack with an incorrect password for more than five times consecutively, the User-ID will have access revoked. To [regain access you will need to reset the User-ID password](#).

Active Directory Access

Active Directory access gives a User the ability to login using their Active Directory credentials.

For this function to be accessible the TapeTrack User-ID must match their Active Directory user name and the Active Domain details entered in their User-ID identity tab in the field AD Domain.

If the field Require AD Group is set to False the User may login using either their Active Domain credentials or using their TapeTrack User-ID and password. If the field Require AD Group is set to True the User can only login using their Active Domain credentials.



Add New User

Identity IP Ranges Access

Identity	
ID	AD-username
Name	username
Group	
ID	doco
Role	0: Documentation
Options	
Administrative rights	False
Scan-In Only	False
Disabled	False
No Scanner	False
No Time-Out	False
tapemaster rights	False
Allow access inheritance	False
Certify	False
AD Domain	tapetrack.gazillabyte.com
Require AD Group	True
Client Access	
TapeMaster	True
Lite	True
Checkpoint	False
Sync	True
Details	
Email Address	myemail@gazillabyte.com
Description	
Defaults	
Customer-ID	<No Selection>

Save Cancel Help

Image shows sample data to illustrate where to enter the required information for Active Directory authentication. You will need to insert your information to create a successful connection.

Active Directory Group Access

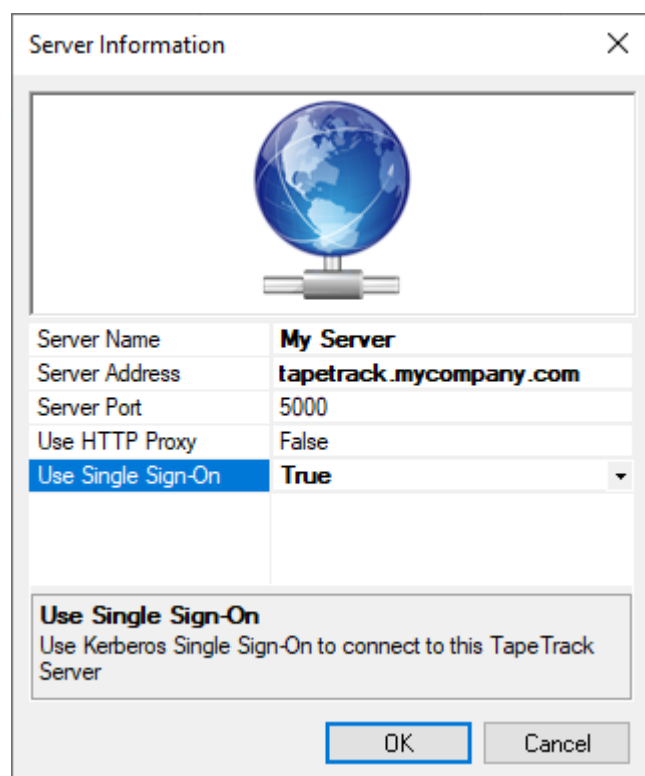
Kerberos Single Sign On

Having Kerberos Single Sign On enabled will allow TapeTrack to automatically authenticate the User using Windows Active Domain credentials used to login to their computer without having to login to TapeTrack individually.

To enable Kerberos Single Sign On, when [setting up the connection](#) set Use Single-Sign-On field to True.

For this function to be accessible the TapeTrack User-ID must match their Active Directory user name and the Active Domain details entered in their User-ID identity tab in the field AD Domain.

As this function is based on a connection setup for each client computer, it can be enabled or disabled per computer as required.



See [setting up the connection](#) for more details on adding a new connection.

From:
<https://rtfm.tapetrack.com/> - **TapeTrack Documentation**

Permanent link:
https://rtfm.tapetrack.com/technote/login_options?rev=1629341018

Last update: **2025/01/21 22:07**

