

One Time Password

A one-time password (OTP) is a unique, temporary code used for a single login session or transaction. Unlike traditional passwords, which remain the same until changed, OTPs are dynamic and can only be used once.

Using a third party authenticator, such as Google Authenticator, 2FAS, Authy etc, your TapeTrack login, once activated, will need your user name, password and a one time code to be successful.



Ensure your computer, server and device is set to the correct geographical location and time zone to have accurate one time passwords created

Enabling One Time Password

Open the user's profile you want to enable the OTP option via TapeMaster Administration > Group User Administration

Open the user-id by right clicking and selecting Properties, or double clicking.

Select the Identity tab.

Set the field One Time Password to True. This will display an extra field Activated, set to False. Once the user has successfully set up the one time password and logged in using a successful code this field will display True to signify the one time password is now required for all future login attempts with TapeTrack desktop software.

Section	Property	Value	
Identity	ID	jdoe	
	Name	John Doe	
Group	ID	noaccess	
	Role	0: Unidentified	
Options	Administrative rights	True	
	Scan-In Only	False	
	Disabled	False	
	No Scanner	False	
	No Time-Out	True	
	tapemaster rights	True	
	Allow access inheritance	False	
	Certify	False	
	AD Domain		
	Require AD Group	False	
	Client Access	TapeMaster	True
		Lite	True
		Checkpoint	True
Sync		True	
Details	Email Address		
	Description		
Defaults			
One-Time Password	Enable	True	
	Activated	True	

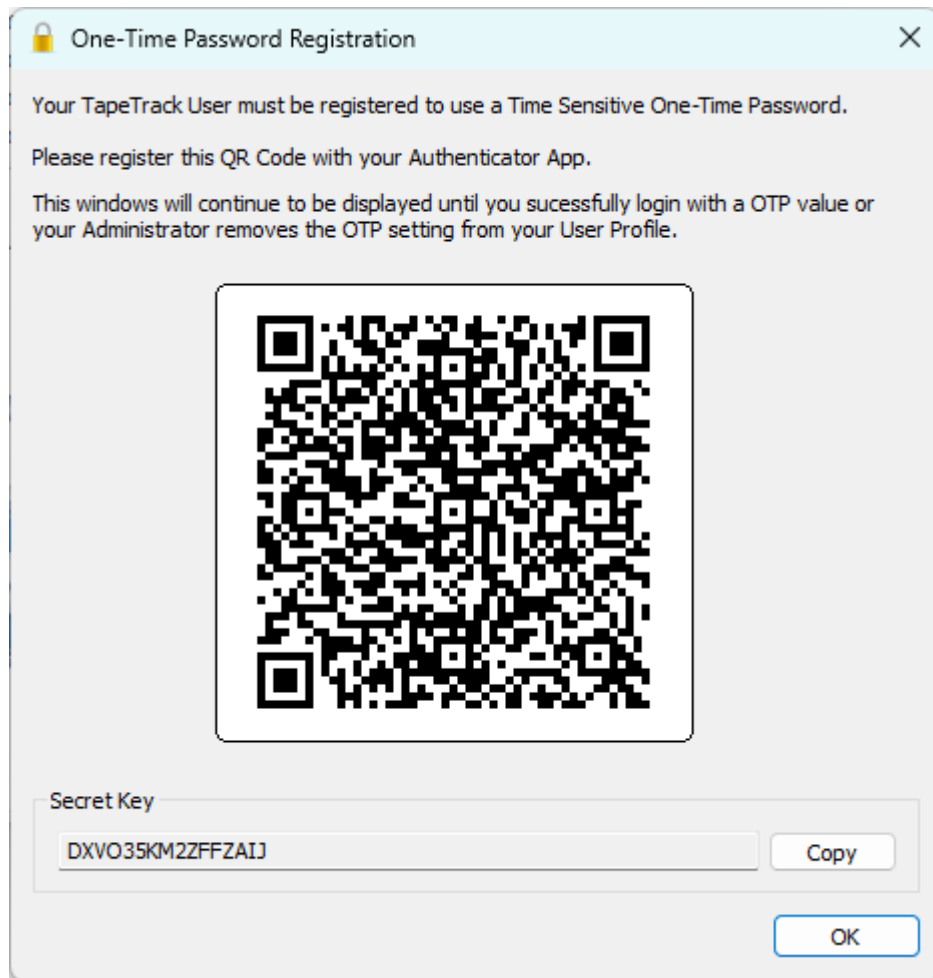
 Once a user has activated the one time password function, all desktop software they use (eg TapeMaster, Checkpoint, Lite etc) will need to be a current version with the OTP function to be able to login.

Setting Up Authenticator

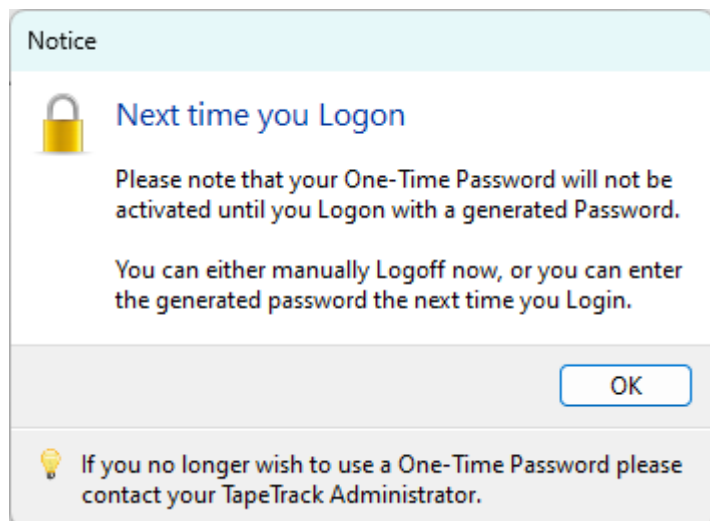
Load your choice of authenticator app on your device. The decision of what authenticator app to use is down to personal preference and your companies IT polices and approved apps.

Log into to your choice of TapeTrack desktop software (TapeMaster, Checkpoint or Lite) with your current user-id and password. Click OK

You will be presented with a QR code to add your key to the authenticator app, scan to add the code or use the Secret Key value to enter it manually.

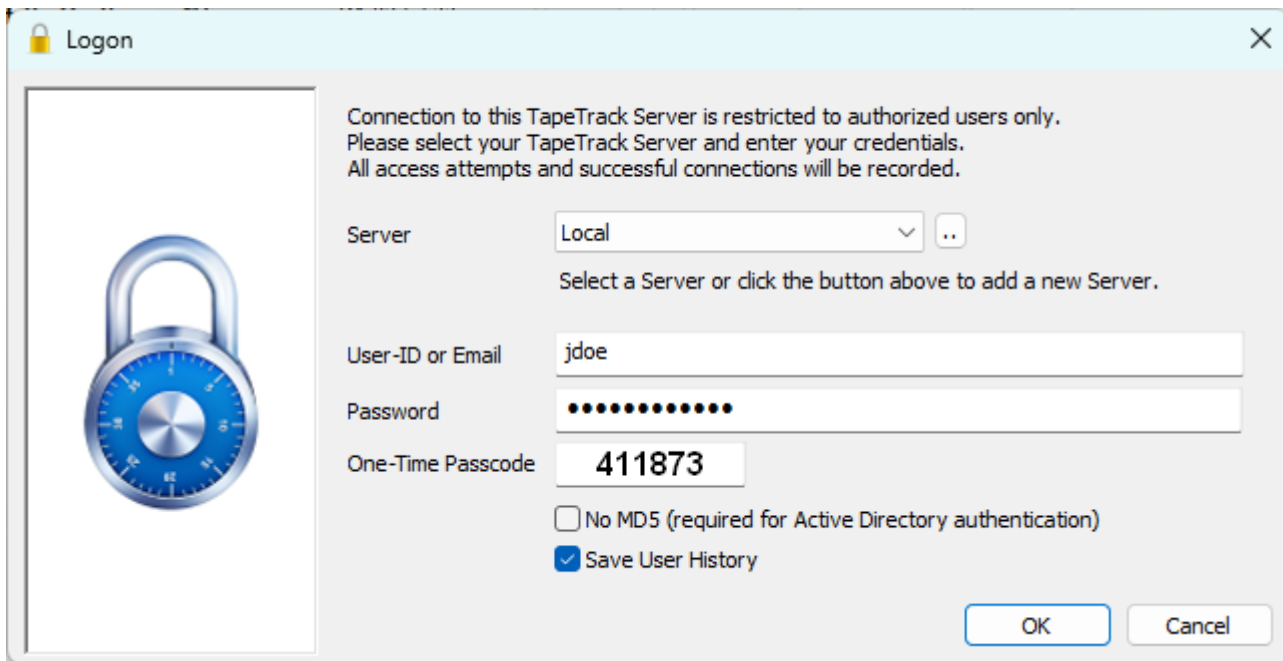


This QR code will be displayed each time you login until you have logged in successfully using the OTP.



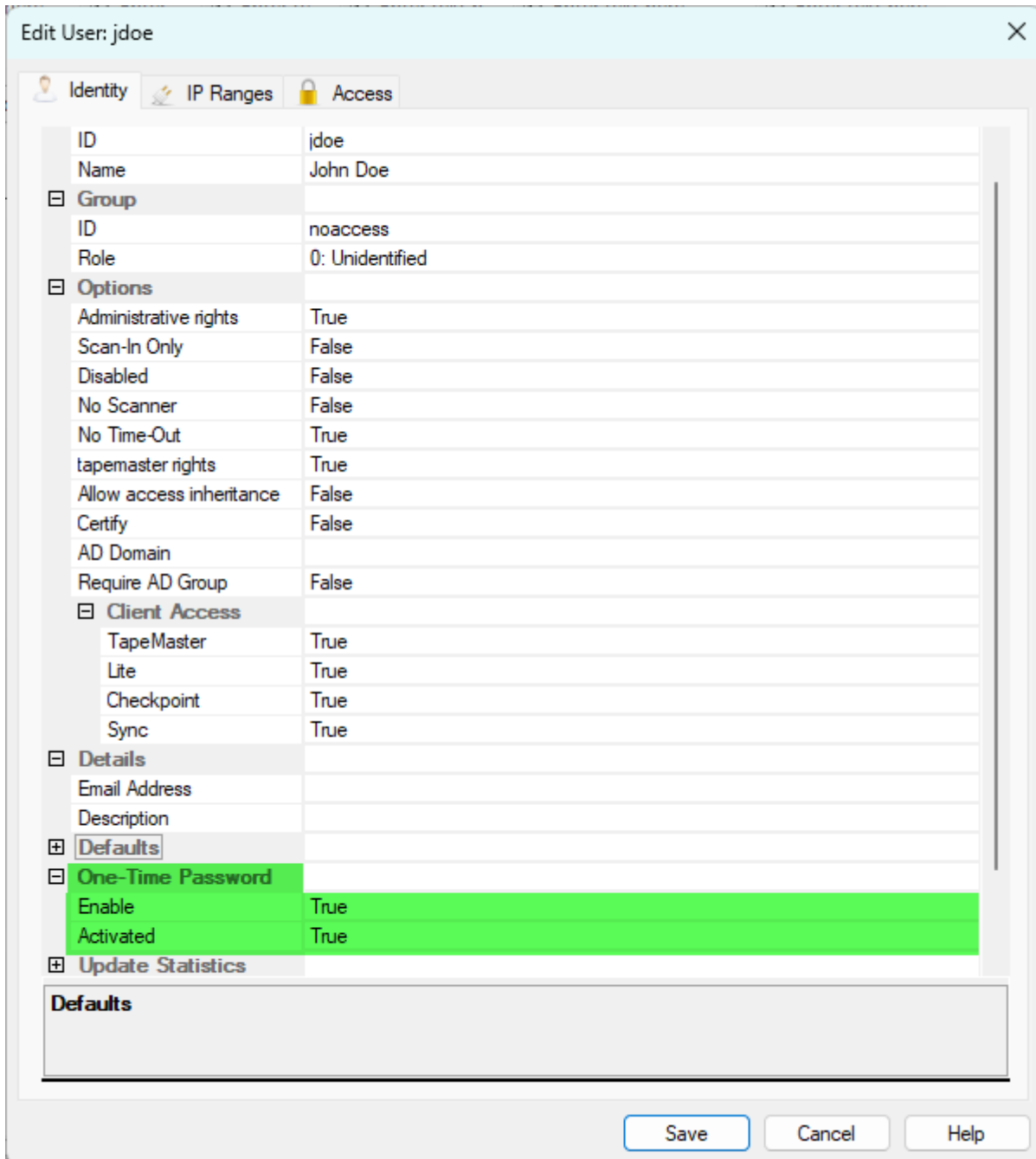
Activate One Time Password

Log out of TapeTrack and log back in, this time using your user-id, password and OTP.



As you have not activated the OTP feature until after a successful login using the OTP value, the QR code will display again. Simply click OK on both the popups and continue for connection. Once you have logged in the OTP is now activated and the QR popup will no longer be displayed on login.

Once the user-id has activated the OTP function, the user-id identity tab will now display the OTP activated field as True.



Lost One Time Password Access

If a user that has the OTP activated loses access to their authenticator (lost or damaged device etc), setting the One Time Password Enabled field to False will turn off the requirement to enter a OTP when logging in.

Setting the One Time Password Enabled field to True will restart the adding OTP process for the user upon login. The secret key will have changed and will need to be added to the new device and then used to login to activate the OTP function.

[technote](#), [tapemaster](#), [master](#), [lite](#), [checkpoint](#), [desktop](#), [login](#), [otp](#)

From:

<https://rtfm.tapetrack.com/> - **TapeTrack Documentation**

Permanent link:

<https://rtfm.tapetrack.com/technote/onetimepassword?rev=1731282034>

Last update: **2025/01/21 22:07**

