

# Program Failure

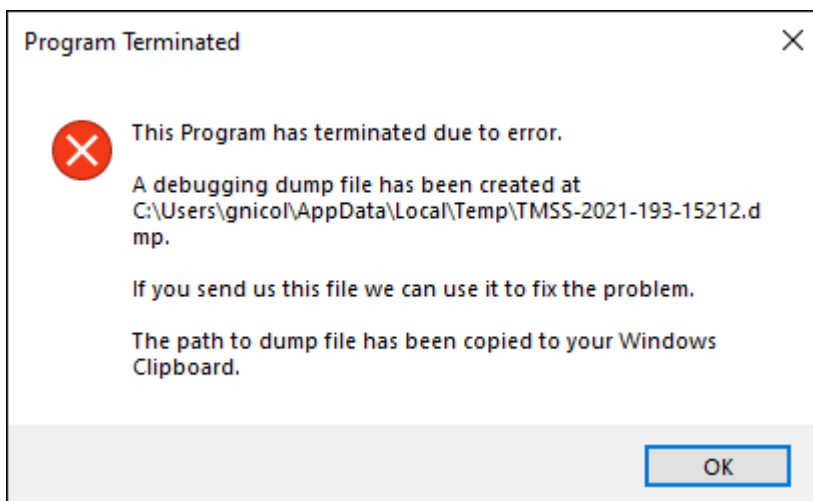
In the unlikely event a TapeTrack program (Desktop, Server or Command Line) failure or crash a memory dump file will be created.

The dump file will contain what processes and drivers that were running at the time of the crash as well as the Kernel-mode stack that stopped.

The information contained in the dump file is used to diagnose why the crash occurred and guide our technical department on creating a fix for the problem.

## Desktop Programs

In the event of a program crash while using TapeTrack Desktop programs you will see a popup saying Program Terminated. This popup will let you know the program has terminated, or stopped running, due to a fatal error.



The name and location of the memory dump file will be displayed to help you locate the file. The location will also be automatically copied to your windows clipboard, allowing you to access the file easily using Windows File Explorer or paste into communication documents to your support staff.

This dump file can then be forwarded to the [GazillaByte Help Desk](#) to help in the diagnosis of the problem that caused the program termination.

## Command Line Programs

In the event of a program crash while using TapeTrack Command Line programs you will see output that an abnormal termination has occurred.

```
An abnormal termination condition has occurred.  
A debugging dump file will be created. This dump file can be sent to support
```

```
for diagnosis.  
File name is: ESP10-2021-193-4824.dmp  
Program terminating  
  
C:\Users\GazillaByte>
```

The dump file will be written to the current active directory, in this example  
C:\Users\GazillaByte>

This dump file can then be forwarded to the [GazillaByte Help Desk](#) to help in the diagnosis of the problem that caused the program terminate.

## Dump File Example

While all dump files will differ based on the program, time of execution and error encountered, here is an example of a dump file from the Command Line program TMSS10ListMoveHistory that had an error purposely added to the code to cause a crash. The code that caused the crash is not included in any publicly available release and was only included here to obtain a sample dump file.

ESP10-2021-193-23560.dmp - Microsoft Visual Studio

File Edit View Project Debug Team Tools Test Analyze Window Help

ESP10-2021-193-23560.dmp

### Minidump File Summary

7/13/2021 11:35:20 AM

^ Dump Summary

Dump File ESP10-2021-193-23560.dmp : C:\Users\diff\Desktop\GazillaByte\Code\_Examples\CLI Dump\ESP10-2021-193-23560.dmp  
 Last Write Time 7/13/2021 11:35:20 AM  
 Process Name TMSS10ListMoveHistory.exe : C:\Program Files\TapeTrack\TapeTrack Server Utilities\bin\tapetrack\TMSS10ListMoveHistory.exe  
 Process Architecture x64  
 Exception Code 0xC0000094  
 Exception Information The thread tried to divide an integer value by an integer divisor of zero.  
 Heap Information Not Present  
 Error Information

^ System Information

OS Version 10.0.19042  
 CLR Version(s)

^ Modules

Search

| Module Name               | Module Version  | Module Path   |
|---------------------------|-----------------|---|
| TMSS10ListMoveHistory.exe | 0.0.0.0         | C:\Program Files\TapeTrack\TapeTrack Server Utilities\bin\tapetrack\TMSS10ListMoveHistory |
| ntdll.dll                 | 10.0.19041.1081 | C:\Windows\System32\ntdll.dll   |
| kernel32.dll              | 10.0.19041.1023 | C:\Windows\System32\kernel32.dll  |
| KERNELBASE.dll            | 10.0.19041.1081 | C:\Windows\System32\KERNELBASE.dll  |
| advapi32.dll              | 10.0.19041.1052 | C:\Windows\System32\advapi32.dll  |
| msvcrt.dll                | 7.0.19041.546   | C:\Windows\System32\msvcrt.dll  |
| sechost.dll               | 10.0.19041.906  | C:\Windows\System32\sechost.dll   |
| rpcrt4.dll                | 10.0.19041.1081 | C:\Windows\System32\rpcrt4.dll  |
| wsock32.dll               | 10.0.19041.1    | C:\Windows\System32\wsock32.dll   |
| ws2_32.dll                | 10.0.19041.546  | C:\Windows\System32\ws2_32.dll  |
| ucrtbase.dll              | 10.0.19041.789  | C:\Windows\System32\ucrtbase.dll  |
| libxl.dll                 | 3.8.4.0         | C:\Program Files\TapeTrack\TapeTrack Server Utilities\bin\tapetrack\libxl.dll             |
| secur32.dll               | 10.0.19041.546  | C:\Windows\System32\secur32.dll   |
| VCRUNTIME140.dll          | 14.29.30037.0   | C:\Windows\System32\VCRUNTIME140.dll  |
| odbc32.dll                | 10.0.19041.1    | C:\Windows\System32\odbc32.dll  |
| crypt32.dll               | 10.0.19041.844  | C:\Windows\System32\crypt32.dll   |
| user32.dll                | 10.0.19041.906  | C:\Windows\System32\user32.dll  |
| IPHLPAPI.DLL              | 10.0.19041.546  | C:\Windows\System32\IPHLPAPI.DLL  |
| win32u.dll                | 10.0.19041.1081 | C:\Windows\System32\win32u.dll  |
| gdi32.dll                 | 10.0.19041.746  | C:\Windows\System32\gdi32.dll   |
| gdi32full.dll             | 10.0.19041.928  | C:\Windows\System32\gdi32full.dll   |
| sspicli.dll               | 10.0.19041.906  | C:\Windows\System32\sspicli.dll   |
| msvc_p_win.dll            | 10.0.19041.789  | C:\Windows\System32\msvc_p_win.dll  |
| shell32.dll               | 10.0.19041.1023 | C:\Windows\System32\shell32.dll   |
| dpapi.dll                 | 10.0.19041.546  | C:\Windows\System32\dpapi.dll   |
| imm32.dll                 | 10.0.19041.546  | C:\Windows\System32\imm32.dll   |
| NapiNSP.dll               | 10.0.19041.546  | C:\Windows\System32\NapiNSP.dll   |
| pnrpnp.dll                | 10.0.19041.546  | C:\Windows\System32\pnrpnp.dll  |
| wshbth.dll                | 10.0.19041.546  | C:\Windows\System32\wshbth.dll  |
| nlaapi.dll                | 10.0.19041.1023 | C:\Windows\System32\nlaapi.dll  |
| mswsock.dll               | 10.0.19041.546  | C:\Windows\System32\mswsock.dll   |
| dnsapi.dll                | 10.0.19041.1023 | C:\Windows\System32\dnsapi.dll  |
| nsi.dll                   | 10.0.19041.610  | C:\Windows\System32\nsi.dll   |
| winmr.dll                 | 10.0.19041.546  | C:\Windows\System32\winmr.dll   |
| dbghelp.dll               | 10.0.19041.867  | C:\Windows\System32\dbghelp.dll   |
| dbgcore.dll               | 10.0.19041.789  | C:\Windows\System32\dbgcore.dll   |
| version.dll               | 10.0.19041.546  | C:\Windows\System32\version.dll   |
| psapi.dll                 | 10.0.19041.546  | C:\Windows\System32\psapi.dll   |

Ready

From:  
<https://rtfm.tapetrack.com/> - **TapeTrack Documentation**

Permanent link:  
[https://rtfm.tapetrack.com/technote/program\\_failure?rev=1626142036](https://rtfm.tapetrack.com/technote/program_failure?rev=1626142036)

Last update: **2025/01/21 22:07**

