

# REG Matching

Changes made to the Windows registry happen immediately, and no backup is automatically made. Do not edit the Windows registry unless you are qualified and confident about doing so.



Microsoft have issued the following warning with respect to the Registry Editor:  
*“Using Registry Editor incorrectly can cause serious, system-wide problems that may require you to re-install Windows to correct them. Microsoft cannot guarantee that any problems resulting from the use of Registry Editor can be solved. Use this tool at your own risk.”*

TapeTrack supports matching against a list of patterns stored in the Windows Registry using the special filter prefix:

\*REG:registry\_value\_name

- Registry key name

This allows a filter field to be compared against multiple patterns defined centrally in the Windows Registry.

REG filtering is functionally similar to [LIST](#) filtering, however the patterns are stored in a registry value instead of a file.

## How REG Matching Works

When a filter begins with:

```
*REG:
```

TapeTrack will:

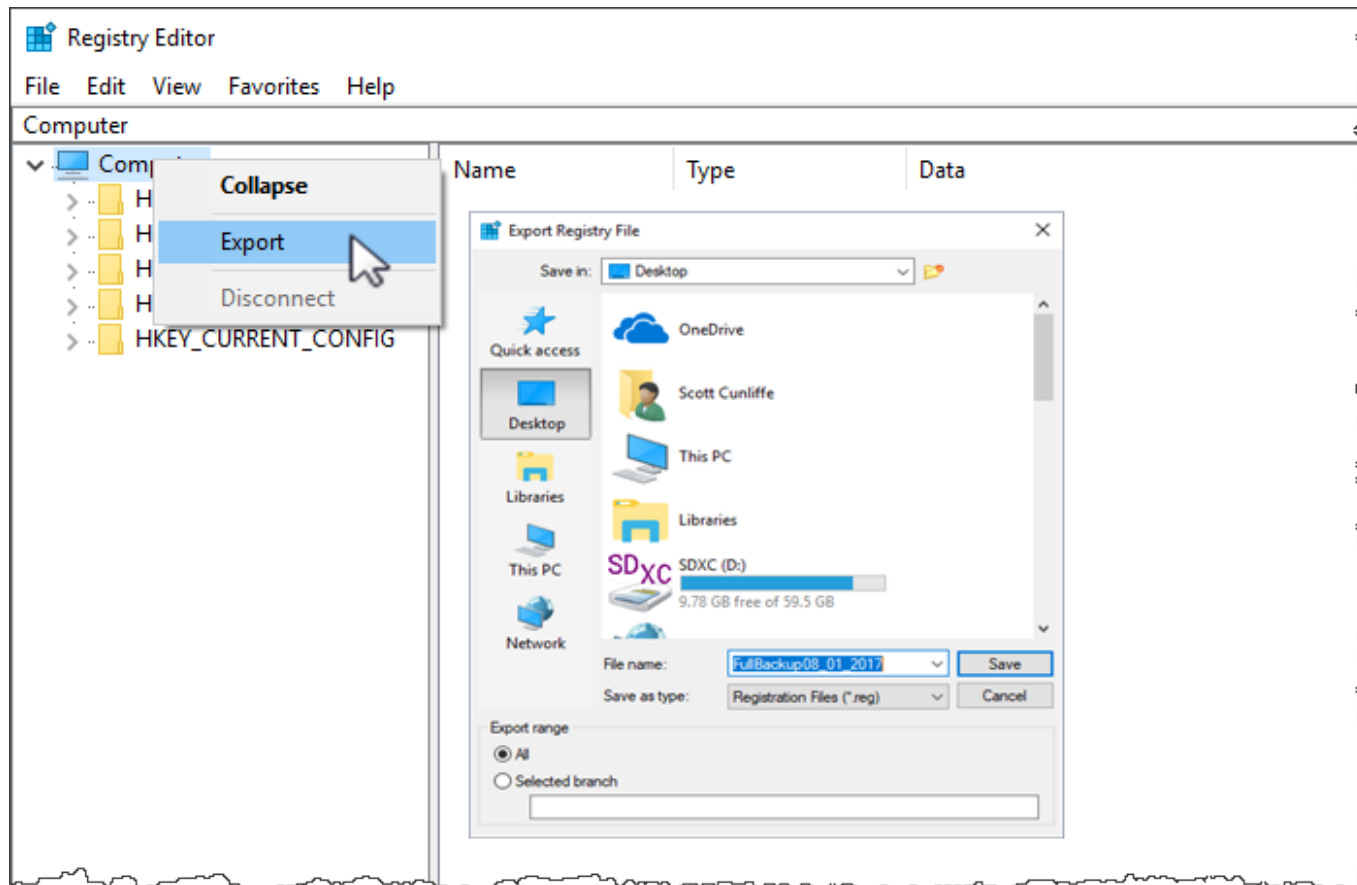
- open the Windows Registry
- locate the specified value name
- read its contents
- treat the contents as a semicolon-separated list of patterns
- stop as soon as a match is found

## Registry Backup



Backup the registry before any making any modifications

Open regedit and create registry backup by right-clicking the top of the registry tree and selecting Export and saving to an appropriate location.

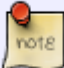


## Registry Location

Registry location:

```
HKEY_CURRENT_USER\Software\GazillaByte\TapeTrack\Lists
```

Each registry value under this key represents a reusable filter list.

 If the Key Lists does not exist, it will need to be added in the location HKEY\_CURRENT\_USER\Software\GazillaByte\TapeTrack\Lists

## Example

Example set of Description values for Volumes in TapeMaster:

- Production database weekly backup
- Prod DB full backup
- Prod data backup set
- Production export dump

Development database backup  
Weekly archive - finance system

## Example Registry Value

Registry Key:

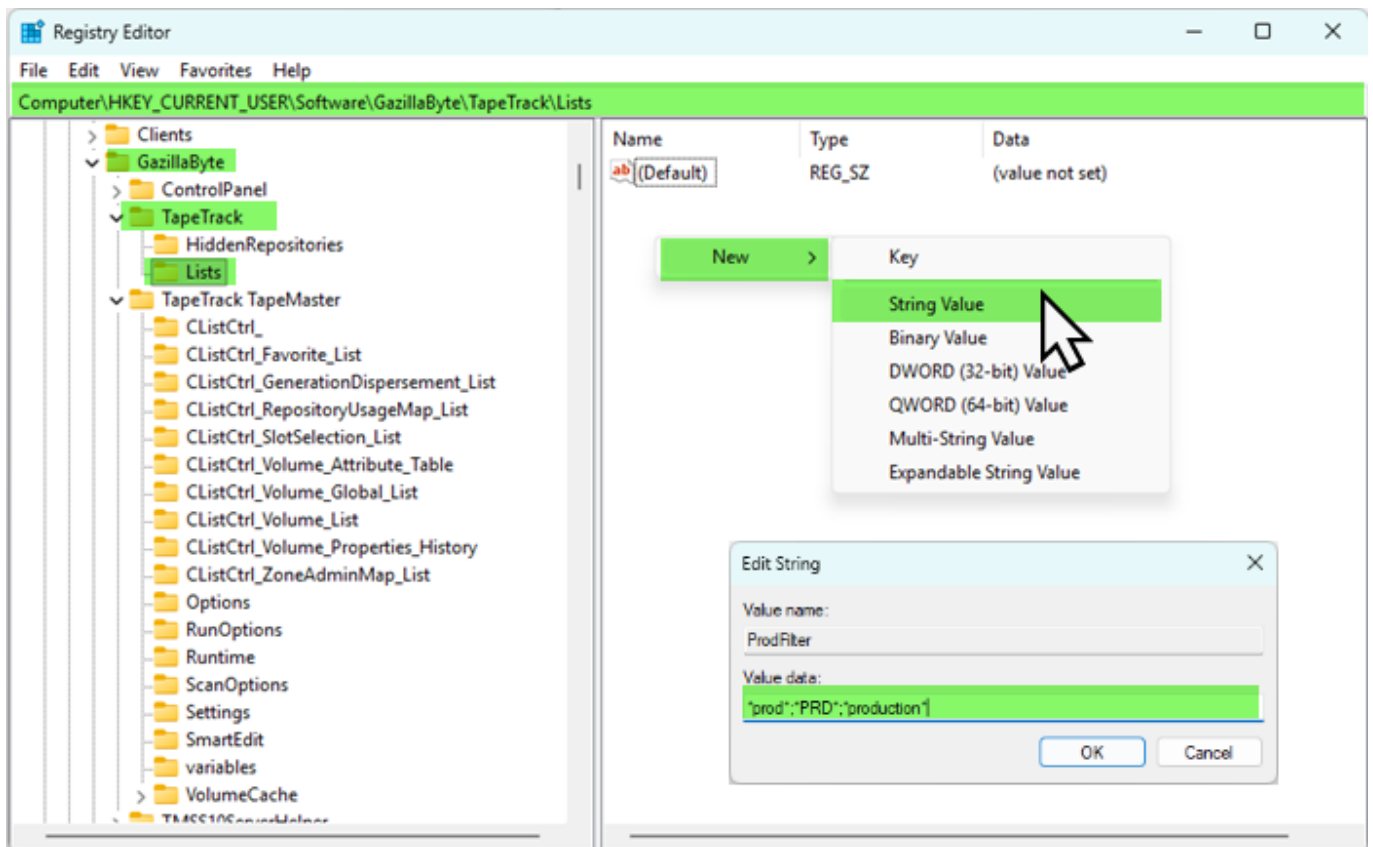
```
HKEY_CURRENT_USER\Software\GazillaByte\TapeTrack\Lists
```

Create a new String Value named:

```
ProdFilters
```

With the following data (semicolon-separated, no spaces):

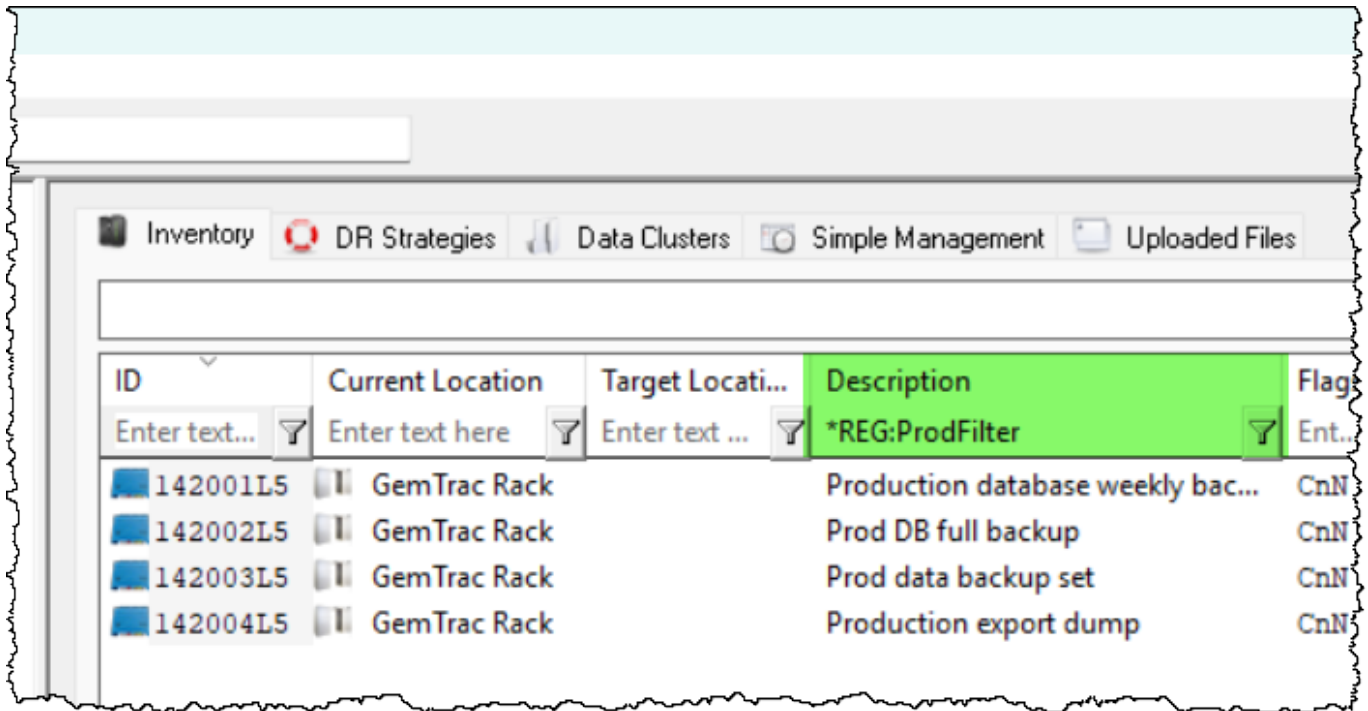
```
*prod*; *PRD*; *production*
```



## Using the REG Filter in TapeMaster

To filter the Description field using the registry list:

```
*REG:ProdFilters
```



This will match any Description containing:

- prod
- PRD
- production

## Expected Matching Results

Using the filter:

```
*REG:ProdFilters
```

The following descriptions would typically match:

- Production database weekly backup
- Prod DB full backup
- Production export dump
- PRD database BKP
- Prod data backup set

The following descriptions would typically not match:

- Development database backup
- Weekly archive - finance system

## Using Wildcards in REG Values

Each entry in the registry value supports standard TapeTrack wildcard matching.

Example registry value data:

```
*backup*; *archive*; *dump*
```

This allows a single REG filter to match multiple categories of Description text.

## When to Use REG vs LIST

Method	Storage Location	Best Used For
LIST	External text file	Shared configuration files
REG	Windows Registry	Centralised per-user configuration

REG filtering is especially useful in environments where:

- administrators want centrally managed filter sets
- users should not modify external files
- reusable filter definitions are required across multiple tools

REG filtering provides a centralized, reusable method of matching a field against multiple wildcard patterns stored in the Windows Registry. It behaves the same as LIST filtering, but stores the pattern list inside:

```
HKEY_CURRENT_USER\Software\GazillaByte\TapeTrack\Lists
```

This makes it ideal for controlled environments where filter rules need to be maintained per user or workstation.

## See Also

[pattern matching](#)

[LIST Matching](#) [\[\[technote:FUZZY|FUZZY Matching](#)

[technote](#), [pattern](#), [string](#)

From: <https://rtfm.tapetrack.com/> - **TapeTrack Documentation**

Permanent link: <https://rtfm.tapetrack.com/technote/reg?rev=1771374857>

Last update: **2026/02/18 00:34**

