

Re-slotting Volumes Within The Same Repository

Select Volumes to Re-slot



If you are going to use a scanner to physically scan the Volumes into the new Slots there is no need to select the Volumes in TapeMaster so you can skip this step.

Select Volumes from the inventory window that require re-slotting using Shift+Click and/or Ctrl+Click.

Copy the Volume-ID's to the clipboard by right clicking highlighted Volumes and selecting Edit > Copy > Unqualified Volumes

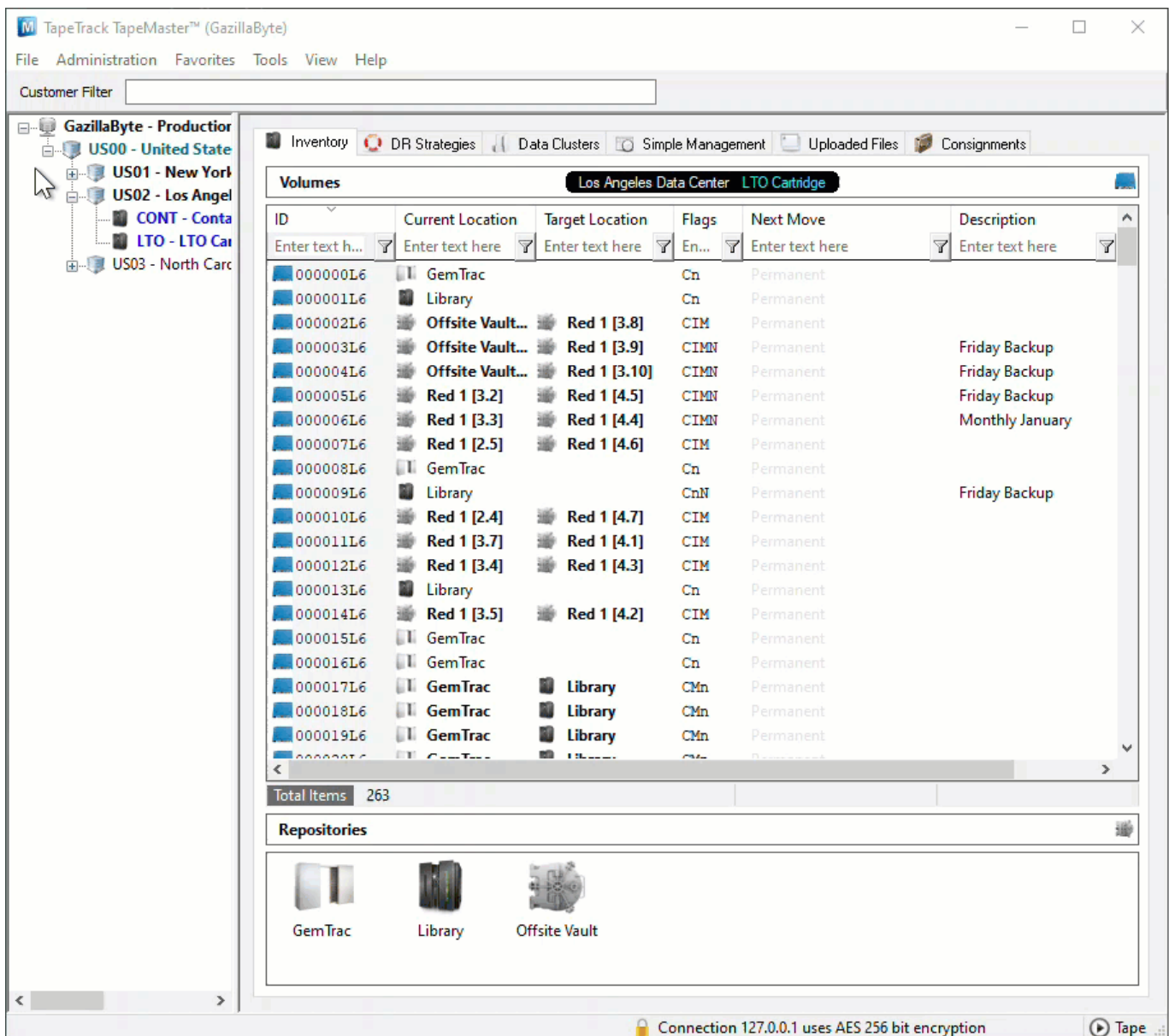
The screenshot shows the TapeTrack TapeMaster interface. The main window displays a list of volumes in the 'Los Angeles Data Center LTO Cartridge' repository. The table has the following columns: ID, Current Location, Target Location, Flags, Next Move, and Description. The 'Total Items' is 263 and 'Total Selected' is 1.

ID	Current Location	Target Location	Flags	Next Move	Description
000000L6	GemTrac		Cn	Permanent	
000001L6	Library		Cn	Permanent	
000002L6	Offsite Vault...	Red 1 [3.8]	CIM	Permanent	
000003L6	Offsite Vault...	Red 1 [3.9]	CIMN	Permanent	Friday Backup
000004L6	Offsite Vault...	Red 1 [3.10]	CIMN	Permanent	Friday Backup
000005L6	Red 1 [3.2]	Red 1 [4.5]	CIMN	Permanent	Friday Backup
000006L6	Red 1 [3.3]	Red 1 [4.4]	CIMN	Permanent	Monthly January
000007L6	Red 1 [2.5]	Red 1 [4.6]	CIM	Permanent	
000008L6	GemTrac		Cn	Permanent	
000009L6	Library		CnN	Permanent	Friday Backup
000010L6	Red 1 [2.4]	Red 1 [4.7]	CIM	Permanent	
000011L6	Red 1 [3.7]	Red 1 [4.1]	CIM	Permanent	
000012L6	Red 1 [3.4]	Red 1 [4.3]	CIM	Permanent	
000013L6	Library		Cn	Permanent	
000014L6	Red 1 [3.5]	Red 1 [4.2]	CIM	Permanent	
000015L6	GemTrac		Cn	Permanent	
000016L6	GemTrac		Cn	Permanent	
000017L6	GemTrac	Library	CMn	Permanent	
000018L6	GemTrac	Library	CMn	Permanent	
000019L6	GemTrac	Library	CMn	Permanent	

The interface also shows a 'Repositories' section at the bottom with icons for GemTrac, Library, and Offsite Vault. The status bar at the bottom indicates 'Connection 127.0.0.1 uses AES 256 bit encryption' and 'Tape'.

Open Repository Map

Right click the required Repository and select View Repository Usage Map to open the Slot allocation window.



Select Slots

Automatically Selected Slots

Right click the highlighted Volumes and select Assignment Helper.

From the Assignment Helper window, set the fields

- Slots Required to the number or Slots required or the number of Volumes to be Slotted.
- Slotting Method
 - First Available to Slot the Volumes in the first available Slots (starting at one and

- working upwards until the required number are selected)
- **Intellislotting to Slot the Volumes in the first available group of consecutive Slots available to fit all Volumes.**

Click OK to close the window and select the Slots, click OK to the confirmation popup.

Manually Selected Slots

Scroll through the listing of Slots and select the required Slots using Shift+Click and/or Ctrl+Click until the correct number of slots are selected for the number of Volumes to be assigned.

Assign Volumes To Slots

If your Volume-ID's are copied to your clipboard, right click the highlighted Slots and select **Edit > Paste Volume List Into Slots**.

If you are using a scanner to scan each Volume to a Slot, right click the highlighted Slots and select **Scan > Scan To Assign** to open the Scan window. Scan the tape to assign each Volume to a selected Slot.

Apply Updates

Right click the highlighted Volumes and select **Update** to reserve the Slots and place Volumes into a move.

Confirming Volumes Into Slots

Right click the highlighted Volumes and select **Confirm**.

Block Slots If Not To Be Re-used

If the Slots are not to be reused for other Volumes they can be blocked and removed from the available Slots listing.

To block the Slots select the required Slots by clicking, Shift+Click and/or Ctrl+Click. Right click the highlighted Slots and select **Slot Management > Block**.

The blocked Slots can be unblocked if required by right clicking the Slot and selecting **Slot Management > Unblock**.

Update TapeMaster Display

Click in the Inventory window and press F5 on your keyboard to update the display.

[slot](#), [master](#), [technote](#), [slotting](#), [zones](#)

From:

<https://rtfm.tapetrack.com/> - **TapeTrack Documentation**

Permanent link:

https://rtfm.tapetrack.com/technote/reslot_volumes?rev=1649292137

Last update: **2025/01/21 22:07**

