

# Re-slotting Volumes Within The Same Repository

## Select Volumes to Re-slot



If you are going to use a scanner to physically scan the Volumes into the new Slots there is no need to select the Volumes in TapeMaster so you can skip this step.

Select Volumes from the inventory window that require re-slotting using Shift+Click and/or Ctrl+Click.

Copy the Volume-ID's to the clipboard by right clicking highlighted Volumes and selecting Edit > Copy > Unqualified Volumes

**TapeTrack TapeMaster™ (GazillaByte)**

File Administration Favorites Tools View Help

Customer Filter

**GazillaByte - Production**

- US00 - United State
- US01 - New York
- US02 - Los Angel
- CONT - Conta
- LTO - LTO Car
- US03 - North Car

**Inventory** DR Strategies Data Clusters Simple Management Uploaded Files Consignments

**Volumes** Los Angeles Data Center LTO Cartridge

ID	Current Location	Target Location	Flags	Next Move	Description
000000L6	GemTrac		Cn	Permanent	
000001L6	Library		Cn	Permanent	
000002L6	Offsite Vault...	Red 1 [3.8]	CIM	Permanent	
000003L6	Offsite Vault...	Red 1 [3.9]	CIMN	Permanent	Friday Backup
000004L6	Offsite Vault...	Red 1 [3.10]	CIMN	Permanent	Friday Backup
000005L6	Red 1 [3.2]	Red 1 [4.5]	CIMN	Permanent	Friday Backup
000006L6	Red 1 [3.3]	Red 1 [4.4]	CIMN	Permanent	Monthly January
000007L6	Red 1 [2.5]	Red 1 [4.6]	CIM	Permanent	
000008L6	GemTrac		Cn	Permanent	
000009L6	Library		CnN	Permanent	Friday Backup
000010L6	Red 1 [2.4]	Red 1 [4.7]	CIM	Permanent	
000011L6	Red 1 [3.7]	Red 1 [4.1]	CIM	Permanent	
000012L6	Red 1 [3.4]	Red 1 [4.3]	CIM	Permanent	
000013L6	Library		Cn	Permanent	
000014L6	Red 1 [3.5]	Red 1 [4.2]	CIM	Permanent	
000015L6	GemTrac		Cn	Permanent	
000016L6	GemTrac		Cn	Permanent	
000017L6	GemTrac	Library	CIMN	Permanent	
000018L6	GemTrac	Library	CIMN	Permanent	
000019L6	GemTrac	Library	CIMN	Permanent	

Total Items 263 Total Selected 1 First Selection 44

**Repositories**

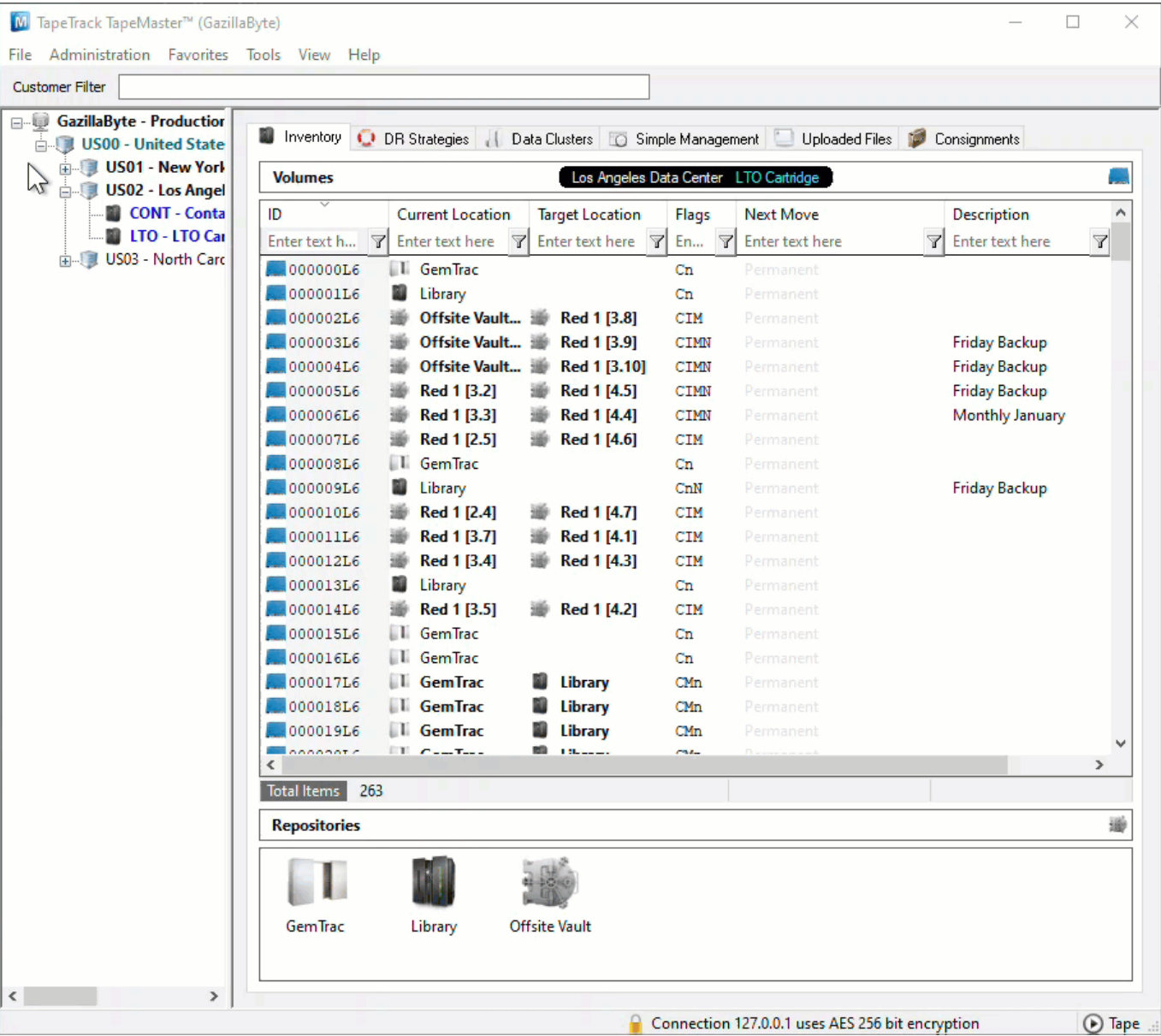
GemTrac Library Offsite Vault

Connection 127.0.0.1 uses AES 256 bit encryption

Tape

# Open Repository Map

Right click the required Repository and select View Repository Usage Map to open the Slot allocation window.



## Select Slots

### Automatically Selected Slots

Right click the highlighted Volumes and select Assignment Helper.

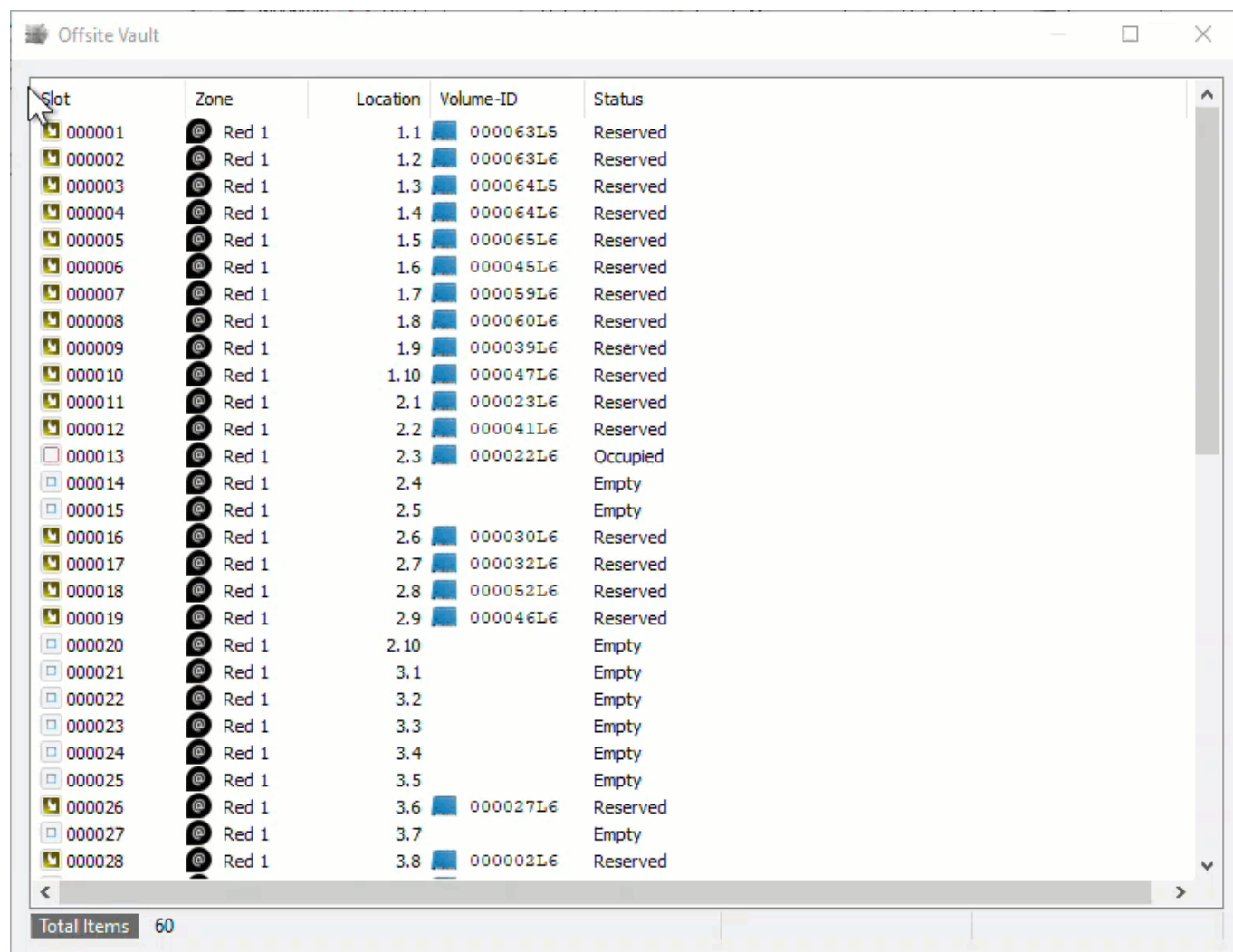
From the Assignment Helper window, set the fields

- Slots Required to the number or Slots required or the number of Volumes to be Slotted.
- Slotting Method
  - First Available to Slot the Volumes in the first available Slots (starting at one and

working upwards until the required number are selected)

- Intellislotting to Slot the Volumes in the first available group of consecutive Slots available to fit all Volumes.

Click OK to close the window and select the Slots, click OK to the confirmation popup.



The screenshot shows the 'Offsite Vault' application window. It contains a table with the following columns: Slot, Zone, Location, Volume-ID, and Status. The table lists 28 slots, each with a corresponding zone, location, volume ID, and status. The status of each slot is either 'Reserved', 'Empty', or 'Occupied'. A status bar at the bottom indicates 'Total Items 60'.

Slot	Zone	Location	Volume-ID	Status
000001	Red 1	1.1	000063L5	Reserved
000002	Red 1	1.2	000063L6	Reserved
000003	Red 1	1.3	000064L5	Reserved
000004	Red 1	1.4	000064L6	Reserved
000005	Red 1	1.5	000065L6	Reserved
000006	Red 1	1.6	000045L6	Reserved
000007	Red 1	1.7	000059L6	Reserved
000008	Red 1	1.8	000060L6	Reserved
000009	Red 1	1.9	000039L6	Reserved
000010	Red 1	1.10	000047L6	Reserved
000011	Red 1	2.1	000023L6	Reserved
000012	Red 1	2.2	000041L6	Reserved
000013	Red 1	2.3	000022L6	Occupied
000014	Red 1	2.4		Empty
000015	Red 1	2.5		Empty
000016	Red 1	2.6	000030L6	Reserved
000017	Red 1	2.7	000032L6	Reserved
000018	Red 1	2.8	000052L6	Reserved
000019	Red 1	2.9	000046L6	Reserved
000020	Red 1	2.10		Empty
000021	Red 1	3.1		Empty
000022	Red 1	3.2		Empty
000023	Red 1	3.3		Empty
000024	Red 1	3.4		Empty
000025	Red 1	3.5		Empty
000026	Red 1	3.6	000027L6	Reserved
000027	Red 1	3.7		Empty
000028	Red 1	3.8	000002L6	Reserved

Total Items 60

## Manually Assigned Slots

Scroll through the listing of Slots and select the required Slots using Shift+Click and/or Ctrl+Click until the correct number of slots are selected for the number of Volumes to be assigned.

If your Volume-ID's are copied to your clipboard, right click the highlighted Slots and select Edit > Paste Volume List Into Slots.

Offsite Vault

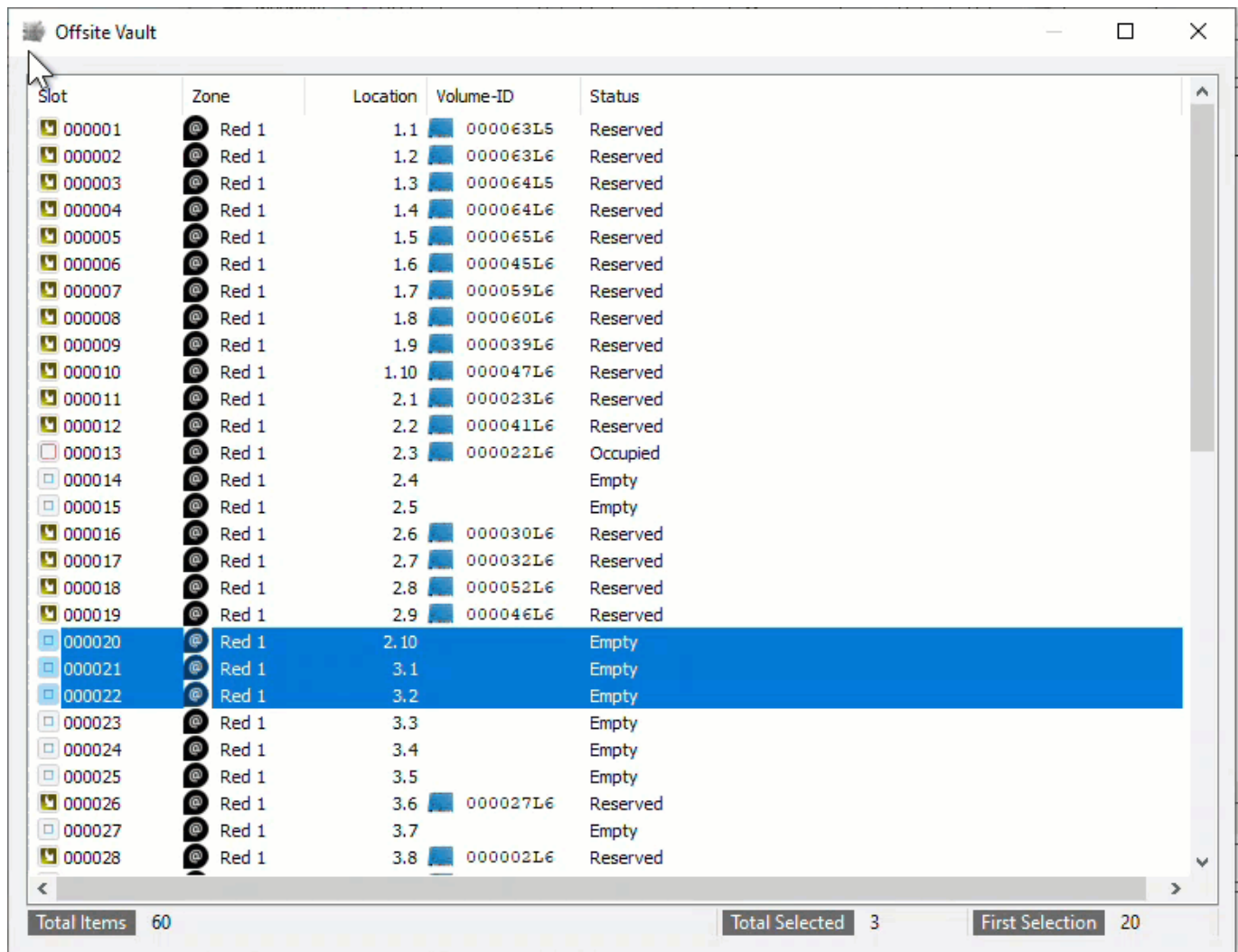
Slot	Zone	Location	Volume-ID	Status
000001	@ Red 1	1.1	000063L6	Reserved
000002	@ Red 1	1.2	000063L6	Reserved
000003	@ Red 1	1.3	000064L6	Reserved
000004	@ Red 1	1.4	000064L6	Reserved
000005	@ Red 1	1.5	000065L6	Reserved
000006	@ Red 1	1.6	000045L6	Reserved
000007	@ Red 1	1.7	000059L6	Reserved
000008	@ Red 1	1.8	000060L6	Reserved
000009	@ Red 1	1.9	000039L6	Reserved
000010	@ Red 1	1.10	000047L6	Reserved
000011	@ Red 1	2.1	000023L6	Reserved
000012	@ Red 1	2.2	000041L6	Reserved
000013	@ Red 1	2.3	000022L6	Occupied
000014	@ Red 1	2.4		Empty
000015	@ Red 1	2.5		Empty
000016	@ Red 1	2.6	000030L6	Reserved
000017	@ Red 1	2.7	000032L6	Reserved
000018	@ Red 1	2.8	000052L6	Reserved
000019	@ Red 1	2.9	000046L6	Reserved
000020	@ Red 1	2.10		Empty
000021	@ Red 1	3.1		Empty
000022	@ Red 1	3.2		Empty
000023	@ Red 1	3.3		Empty
000024	@ Red 1	3.4		Empty
000025	@ Red 1	3.5		Empty
000026	@ Red 1	3.6	000027L6	Reserved
000027	@ Red 1	3.7		Empty
000028	@ Red 1	3.8	000002L6	Reserved
000029	@ Red 1	3.9	000003L6	Reserved

Total Items60

Total Selected1

First Selection49

If you are using a scanner to scan each Volume to a Slot, right click the highlighted Slots and select Scan > Scan To Assign to open the Scan window. Scan the Barcodes in the order you want to assign each Volume to the selected Slots. Close the Scan window when Volumes have all been scanned.



The screenshot shows the 'Offsite Vault' application window. It contains a table with columns: Slot, Zone, Location, Volume-ID, and Status. The table lists 28 slots, each associated with 'Red 1' zone. Slots 000001 through 000019 have reserved volumes. Slots 000020, 000021, and 000022 are highlighted in blue and are currently empty. Slots 000023 through 000028 are also empty. The status bar at the bottom indicates 'Total Items: 60', 'Total Selected: 3', and 'First Selection: 20'.

Slot	Zone	Location	Volume-ID	Status
000001	Red 1	1.1	000063L5	Reserved
000002	Red 1	1.2	000063L6	Reserved
000003	Red 1	1.3	000064L5	Reserved
000004	Red 1	1.4	000064L6	Reserved
000005	Red 1	1.5	000065L6	Reserved
000006	Red 1	1.6	000045L6	Reserved
000007	Red 1	1.7	000059L6	Reserved
000008	Red 1	1.8	000060L6	Reserved
000009	Red 1	1.9	000039L6	Reserved
000010	Red 1	1.10	000047L6	Reserved
000011	Red 1	2.1	000023L6	Reserved
000012	Red 1	2.2	000041L6	Reserved
000013	Red 1	2.3	000022L6	Occupied
000014	Red 1	2.4		Empty
000015	Red 1	2.5		Empty
000016	Red 1	2.6	000030L6	Reserved
000017	Red 1	2.7	000032L6	Reserved
000018	Red 1	2.8	000052L6	Reserved
000019	Red 1	2.9	000046L6	Reserved
000020	Red 1	2.10		Empty
000021	Red 1	3.1		Empty
000022	Red 1	3.2		Empty
000023	Red 1	3.3		Empty
000024	Red 1	3.4		Empty
000025	Red 1	3.5		Empty
000026	Red 1	3.6	000027L6	Reserved
000027	Red 1	3.7		Empty
000028	Red 1	3.8	000002L6	Reserved

Total Items: 60      Total Selected: 3      First Selection: 20

## Apply Updates

Right click the highlighted Volumes and select Update to reserve the Slots and place Volumes into a move.

Offsite Vault

Slot	Zone	Location	Volume-ID	Status
000001	Red 1	1.1	000063L5	Reserved
000002	Red 1	1.2	000063L6	Reserved
000003	Red 1	1.3	000064L5	Reserved
000004	Red 1	1.4	000064L6	Reserved
000005	Red 1	1.5	000065L6	Reserved
000006	Red 1	1.6	000045L6	Reserved
000007	Red 1	1.7	000059L6	Reserved
000008	Red 1	1.8	000060L6	Reserved
000009	Red 1	1.9	000039L6	Reserved
000010	Red 1	1.10	000047L6	Reserved
000011	Red 1	2.1	000023L6	Reserved
000012	Red 1	2.2	000041L6	Reserved
000013	Red 1	2.3	000022L6	Occupied
000014	Red 1	2.4		Empty
000015	Red 1	2.5		Empty
000016	Red 1	2.6	000030L6	Reserved
000017	Red 1	2.7	000032L6	Reserved
000018	Red 1	2.8	000052L6	Reserved
000019	Red 1	2.9	000046L6	Reserved
000020	Red 1	2.10	000010L6	Paste update pending
000021	Red 1	3.1	000011L6	Paste update pending
000022	Red 1	3.2	000012L6	Paste update pending
000023	Red 1	3.3		Empty
000024	Red 1	3.4		Empty
000025	Red 1	3.5		Empty
000026	Red 1	3.6	000027L6	Reserved
000027	Red 1	3.7		Empty
000028	Red 1	3.8	000002L6	Reserved

Total Items60

Total Selected3

First Selection20

## Confirming Volumes Into Slots

Right click the highlighted Volumes and select Confirm.

## Block Slots If Not To Be Re-used

If the Slots are not to be reused for other Volumes they can be blocked and removed from the available Slots listing.

To block the Slots select the required Slots by clicking, Shift+Click and/or Ctrl+Click. Right click the highlighted Slots and select Slot Management > Block.

The blocked Slots can be unblocked if required by right clicking the Slot and selecting Slot Management > Unblock.

## Update TapeMaster Display

Click in the Inventory window and press F5 on your keyboard to update the display.

[slot](#), [master](#), [technote](#), [slotting](#), [zones](#)

From:

<https://rtfm.tapetrack.com/> - **TapeTrack Documentation**

Permanent link:

[https://rtfm.tapetrack.com/technote/reslot\\_volumes?rev=1649294426](https://rtfm.tapetrack.com/technote/reslot_volumes?rev=1649294426)

Last update: **2025/01/21 22:07**

