

Re-slotting Volumes Within The Same Repository

Select Volumes to Re-slot



If you are going to use a scanner to physically scan the Volumes into the new Slots there is no need to select the Volumes in TapeMaster so you can skip this step.

Select Volumes from the inventory window that require re-slotting using Shift+Click and/or Ctrl+Click.

Copy the Volume-ID's to the clipboard by right clicking highlighted Volumes and selecting Edit > Copy > Unqualified Volumes

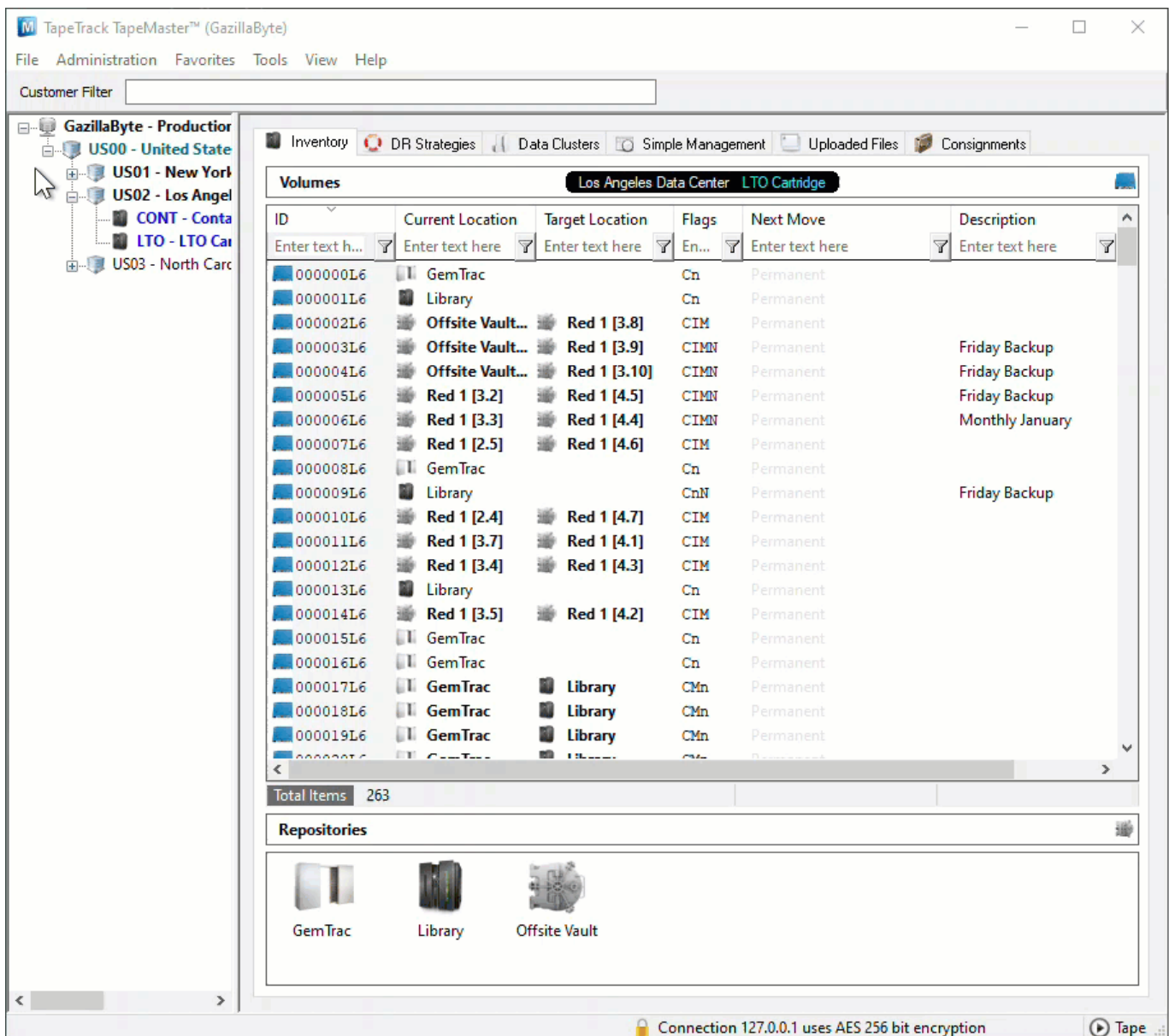
The screenshot shows the TapeTrack TapeMaster interface. The main window displays a list of volumes in the 'Los Angeles Data Center LTO Cartridge' repository. The table below represents the data shown in the interface:

| ID | Current Location | Target Location | Flags | Next Move | Description |
|----------|------------------|-----------------|-------|-----------|-----------------|
| 000000L6 | GemTrac | | Cn | Permanent | |
| 000001L6 | Library | | Cn | Permanent | |
| 000002L6 | Offsite Vault... | Red 1 [3.8] | CIM | Permanent | |
| 000003L6 | Offsite Vault... | Red 1 [3.9] | CIMN | Permanent | Friday Backup |
| 000004L6 | Offsite Vault... | Red 1 [3.10] | CIMN | Permanent | Friday Backup |
| 000005L6 | Red 1 [3.2] | Red 1 [4.5] | CIMN | Permanent | Friday Backup |
| 000006L6 | Red 1 [3.3] | Red 1 [4.4] | CIMN | Permanent | Monthly January |
| 000007L6 | Red 1 [2.5] | Red 1 [4.6] | CIM | Permanent | |
| 000008L6 | GemTrac | | Cn | Permanent | |
| 000009L6 | Library | | CnN | Permanent | Friday Backup |
| 000010L6 | Red 1 [2.4] | Red 1 [4.7] | CIM | Permanent | |
| 000011L6 | Red 1 [3.7] | Red 1 [4.1] | CIM | Permanent | |
| 000012L6 | Red 1 [3.4] | Red 1 [4.3] | CIM | Permanent | |
| 000013L6 | Library | | Cn | Permanent | |
| 000014L6 | Red 1 [3.5] | Red 1 [4.2] | CIM | Permanent | |
| 000015L6 | GemTrac | | Cn | Permanent | |
| 000016L6 | GemTrac | | Cn | Permanent | |
| 000017L6 | GemTrac | Library | CMn | Permanent | |
| 000018L6 | GemTrac | Library | CMn | Permanent | |
| 000019L6 | GemTrac | Library | CMn | Permanent | |

At the bottom of the interface, there are repository icons for GemTrac, Library, and Offsite Vault. The status bar at the bottom indicates 'Connection 127.0.0.1 uses AES 256 bit encryption' and 'Tape'.

Open Repository Map

Right click the required Repository and select View Repository Usage Map to open the Slot allocation window.



Select Slots

Automatically Selected Slots

Right click the highlighted Volumes and select Assignment Helper.

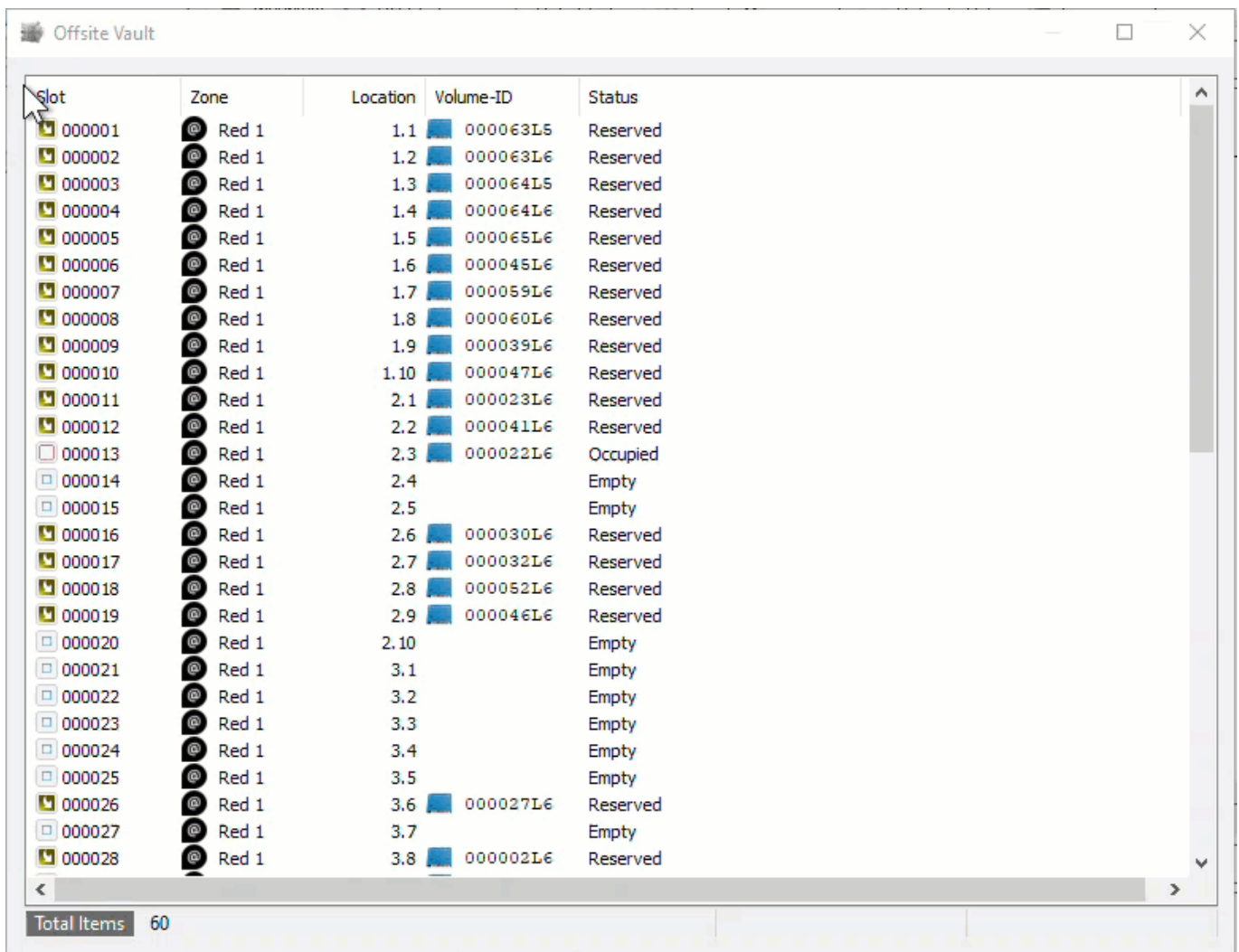
From the Assignment Helper window, set the fields

- Slots Required to the number or Slots required or the number of Volumes to be Slotted.
- Slotting Method
 - First Available to Slot the Volumes in the first available Slots (starting at one and

working upwards until the required number are selected)

- Intellislotting to Slot the Volumes in the first available group of consecutive Slots available to fit all Volumes.

Click OK to close the window and select the Slots, click OK to the confirmation popup.



| Slot | Zone | Location | Volume-ID | Status |
|--------|---------|----------|-----------|----------|
| 000001 | @ Red 1 | 1.1 | 000063L5 | Reserved |
| 000002 | @ Red 1 | 1.2 | 000063L6 | Reserved |
| 000003 | @ Red 1 | 1.3 | 000064L5 | Reserved |
| 000004 | @ Red 1 | 1.4 | 000064L6 | Reserved |
| 000005 | @ Red 1 | 1.5 | 000065L6 | Reserved |
| 000006 | @ Red 1 | 1.6 | 000045L6 | Reserved |
| 000007 | @ Red 1 | 1.7 | 000059L6 | Reserved |
| 000008 | @ Red 1 | 1.8 | 000060L6 | Reserved |
| 000009 | @ Red 1 | 1.9 | 000039L6 | Reserved |
| 000010 | @ Red 1 | 1.10 | 000047L6 | Reserved |
| 000011 | @ Red 1 | 2.1 | 000023L6 | Reserved |
| 000012 | @ Red 1 | 2.2 | 000041L6 | Reserved |
| 000013 | @ Red 1 | 2.3 | 000022L6 | Occupied |
| 000014 | @ Red 1 | 2.4 | | Empty |
| 000015 | @ Red 1 | 2.5 | | Empty |
| 000016 | @ Red 1 | 2.6 | 000030L6 | Reserved |
| 000017 | @ Red 1 | 2.7 | 000032L6 | Reserved |
| 000018 | @ Red 1 | 2.8 | 000052L6 | Reserved |
| 000019 | @ Red 1 | 2.9 | 000046L6 | Reserved |
| 000020 | @ Red 1 | 2.10 | | Empty |
| 000021 | @ Red 1 | 3.1 | | Empty |
| 000022 | @ Red 1 | 3.2 | | Empty |
| 000023 | @ Red 1 | 3.3 | | Empty |
| 000024 | @ Red 1 | 3.4 | | Empty |
| 000025 | @ Red 1 | 3.5 | | Empty |
| 000026 | @ Red 1 | 3.6 | 000027L6 | Reserved |
| 000027 | @ Red 1 | 3.7 | | Empty |
| 000028 | @ Red 1 | 3.8 | 000002L6 | Reserved |

Total Items 60

Manually Assigned Slots

Scroll through the listing of Slots and select the required Slots using Shift+Click and/or Ctrl+Click until the correct number of slots are selected for the number of Volumes to be assigned.

If your Volume-ID's are copied to your clipboard, right click the highlighted Slots and select Edit > Paste Volume List Into Slots.

| Slot | Zone | Location | Volume-ID | Status |
|--------|-------|----------|-----------|----------|
| 000001 | Red 1 | 1.1 | 000063L6 | Reserved |
| 000002 | Red 1 | 1.2 | 000063L6 | Reserved |
| 000003 | Red 1 | 1.3 | 000064L6 | Reserved |
| 000004 | Red 1 | 1.4 | 000064L6 | Reserved |
| 000005 | Red 1 | 1.5 | 000065L6 | Reserved |
| 000006 | Red 1 | 1.6 | 000045L6 | Reserved |
| 000007 | Red 1 | 1.7 | 000059L6 | Reserved |
| 000008 | Red 1 | 1.8 | 000060L6 | Reserved |
| 000009 | Red 1 | 1.9 | 000039L6 | Reserved |
| 000010 | Red 1 | 1.10 | 000047L6 | Reserved |
| 000011 | Red 1 | 2.1 | 000023L6 | Reserved |
| 000012 | Red 1 | 2.2 | 000041L6 | Reserved |
| 000013 | Red 1 | 2.3 | 000022L6 | Occupied |
| 000014 | Red 1 | 2.4 | | Empty |
| 000015 | Red 1 | 2.5 | | Empty |
| 000016 | Red 1 | 2.6 | 000030L6 | Reserved |
| 000017 | Red 1 | 2.7 | 000032L6 | Reserved |
| 000018 | Red 1 | 2.8 | 000052L6 | Reserved |
| 000019 | Red 1 | 2.9 | 000046L6 | Reserved |
| 000020 | Red 1 | 2.10 | | Empty |
| 000021 | Red 1 | 3.1 | | Empty |
| 000022 | Red 1 | 3.2 | | Empty |
| 000023 | Red 1 | 3.3 | | Empty |
| 000024 | Red 1 | 3.4 | | Empty |
| 000025 | Red 1 | 3.5 | | Empty |
| 000026 | Red 1 | 3.6 | 000027L6 | Reserved |
| 000027 | Red 1 | 3.7 | | Empty |
| 000028 | Red 1 | 3.8 | 000002L6 | Reserved |
| 000029 | Red 1 | 3.9 | 000003L6 | Reserved |

Total Items 60 Total Selected 1 First Selection 49

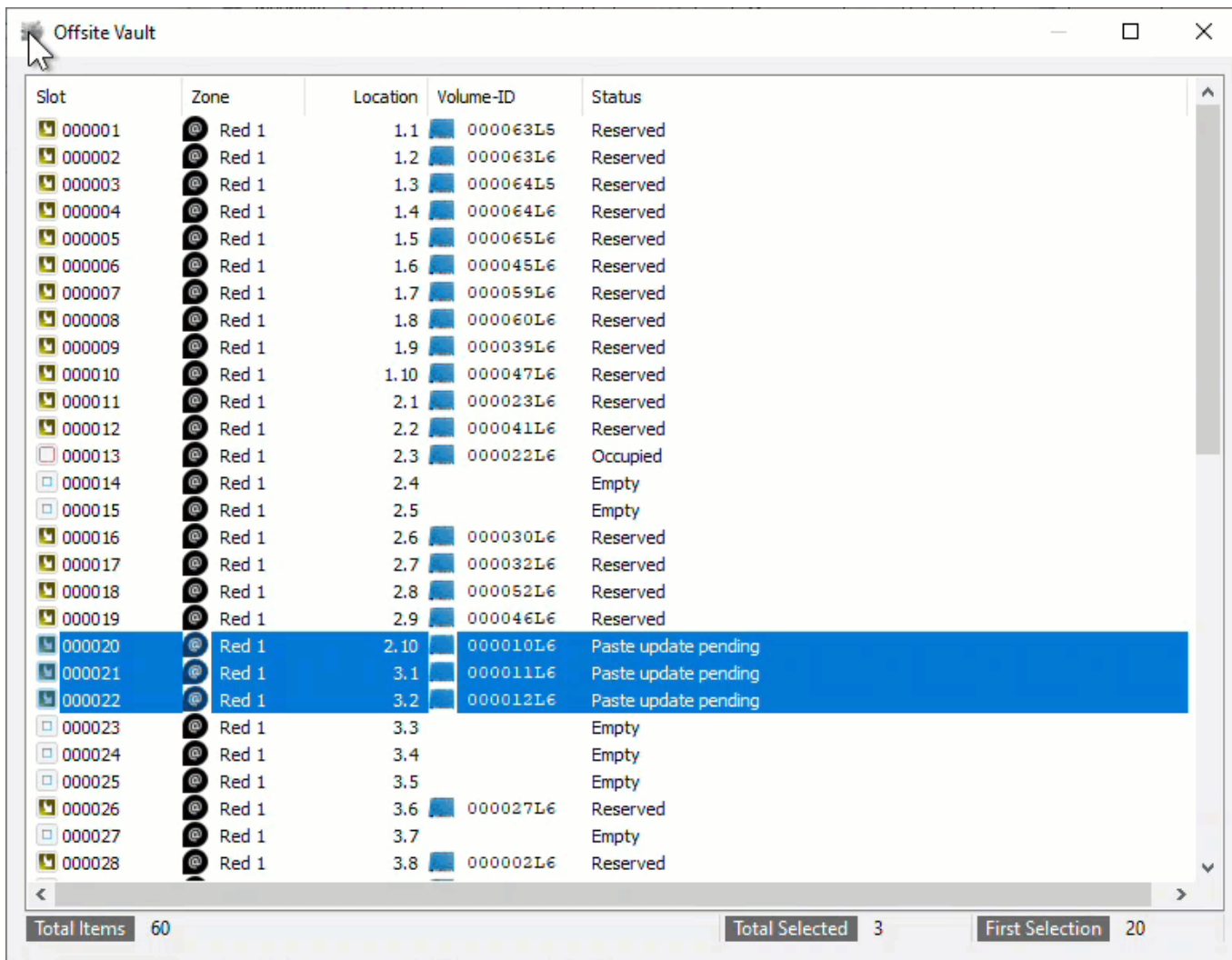
If you are using a scanner to scan each Volume to a Slot, right click the highlighted Slots and select Scan > Scan To Assign to open the Scan window. Scan the Barcodes in the order you want to assign each Volume to the selected Slots. Close the Scan window when Volumes have all been scanned.

| Slot | Zone | Location | Volume-ID | Status |
|--------|-------|----------|-----------|----------|
| 000001 | Red 1 | 1.1 | 000063L5 | Reserved |
| 000002 | Red 1 | 1.2 | 000063L6 | Reserved |
| 000003 | Red 1 | 1.3 | 000064L5 | Reserved |
| 000004 | Red 1 | 1.4 | 000064L6 | Reserved |
| 000005 | Red 1 | 1.5 | 000065L6 | Reserved |
| 000006 | Red 1 | 1.6 | 000045L6 | Reserved |
| 000007 | Red 1 | 1.7 | 000059L6 | Reserved |
| 000008 | Red 1 | 1.8 | 000060L6 | Reserved |
| 000009 | Red 1 | 1.9 | 000039L6 | Reserved |
| 000010 | Red 1 | 1.10 | 000047L6 | Reserved |
| 000011 | Red 1 | 2.1 | 000023L6 | Reserved |
| 000012 | Red 1 | 2.2 | 000041L6 | Reserved |
| 000013 | Red 1 | 2.3 | 000022L6 | Occupied |
| 000014 | Red 1 | 2.4 | | Empty |
| 000015 | Red 1 | 2.5 | | Empty |
| 000016 | Red 1 | 2.6 | 000030L6 | Reserved |
| 000017 | Red 1 | 2.7 | 000032L6 | Reserved |
| 000018 | Red 1 | 2.8 | 000052L6 | Reserved |
| 000019 | Red 1 | 2.9 | 000046L6 | Reserved |
| 000020 | Red 1 | 2.10 | | Empty |
| 000021 | Red 1 | 3.1 | | Empty |
| 000022 | Red 1 | 3.2 | | Empty |
| 000023 | Red 1 | 3.3 | | Empty |
| 000024 | Red 1 | 3.4 | | Empty |
| 000025 | Red 1 | 3.5 | | Empty |
| 000026 | Red 1 | 3.6 | 000027L6 | Reserved |
| 000027 | Red 1 | 3.7 | | Empty |
| 000028 | Red 1 | 3.8 | 000002L6 | Reserved |

Total Items 60 Total Selected 3 First Selection 20

Apply Updates

Right click the highlighted Volumes and select Update to reserve the Slots and place Volumes into a move.



| Slot | Zone | Location | Volume-ID | Status |
|--------|-------|----------|-----------|----------------------|
| 000001 | Red 1 | 1.1 | 000063L6 | Reserved |
| 000002 | Red 1 | 1.2 | 000063L6 | Reserved |
| 000003 | Red 1 | 1.3 | 000064L6 | Reserved |
| 000004 | Red 1 | 1.4 | 000064L6 | Reserved |
| 000005 | Red 1 | 1.5 | 000065L6 | Reserved |
| 000006 | Red 1 | 1.6 | 000045L6 | Reserved |
| 000007 | Red 1 | 1.7 | 000059L6 | Reserved |
| 000008 | Red 1 | 1.8 | 000060L6 | Reserved |
| 000009 | Red 1 | 1.9 | 000039L6 | Reserved |
| 000010 | Red 1 | 1.10 | 000047L6 | Reserved |
| 000011 | Red 1 | 2.1 | 000023L6 | Reserved |
| 000012 | Red 1 | 2.2 | 000041L6 | Reserved |
| 000013 | Red 1 | 2.3 | 000022L6 | Occupied |
| 000014 | Red 1 | 2.4 | | Empty |
| 000015 | Red 1 | 2.5 | | Empty |
| 000016 | Red 1 | 2.6 | 000030L6 | Reserved |
| 000017 | Red 1 | 2.7 | 000032L6 | Reserved |
| 000018 | Red 1 | 2.8 | 000052L6 | Reserved |
| 000019 | Red 1 | 2.9 | 000046L6 | Reserved |
| 000020 | Red 1 | 2.10 | 000010L6 | Paste update pending |
| 000021 | Red 1 | 3.1 | 000011L6 | Paste update pending |
| 000022 | Red 1 | 3.2 | 000012L6 | Paste update pending |
| 000023 | Red 1 | 3.3 | | Empty |
| 000024 | Red 1 | 3.4 | | Empty |
| 000025 | Red 1 | 3.5 | | Empty |
| 000026 | Red 1 | 3.6 | 000027L6 | Reserved |
| 000027 | Red 1 | 3.7 | | Empty |
| 000028 | Red 1 | 3.8 | 000002L6 | Reserved |

Total Items 60 Total Selected 3 First Selection 20

Confirming Volumes Into Slots

Volumes may be left in a move status to allow librarian staff to scan them in the Slots using your usual Scan-Inn process or they can be confirmed in through either the Repository Usage Map window or TapeMaster Inventory window.

To Confirm the Volumes in the Repository Usage Map window, right click the highlighted Volumes and select Confirm.

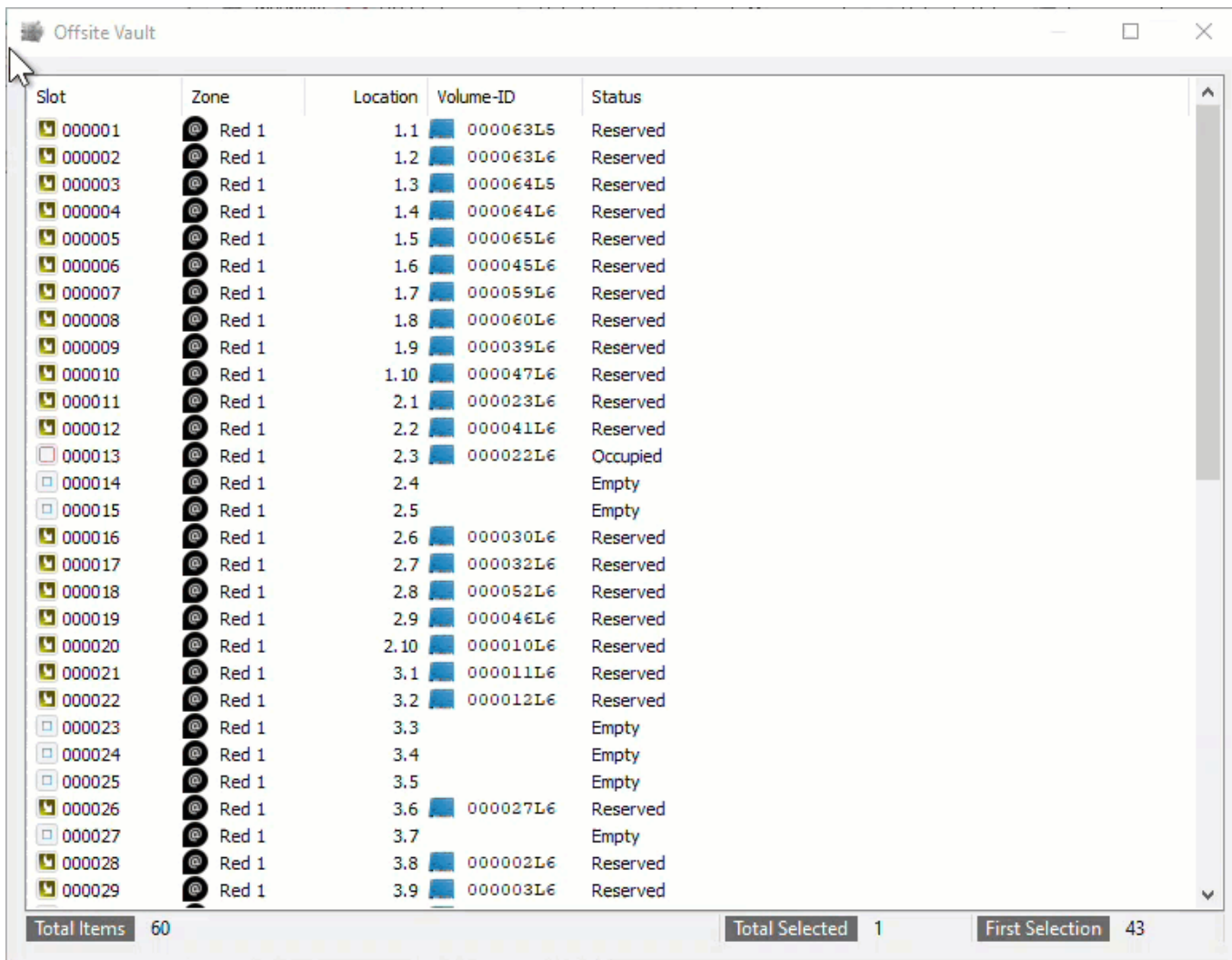
| Slot | Zone | Location | Volume-ID | Status |
|--------|-------|----------|-----------|----------|
| 000001 | Red 1 | 1.1 | 000063L5 | Reserved |
| 000002 | Red 1 | 1.2 | 000063L6 | Reserved |
| 000003 | Red 1 | 1.3 | 000064L5 | Reserved |
| 000004 | Red 1 | 1.4 | 000064L6 | Reserved |
| 000005 | Red 1 | 1.5 | 000065L6 | Reserved |
| 000006 | Red 1 | 1.6 | 000045L6 | Reserved |
| 000007 | Red 1 | 1.7 | 000059L6 | Reserved |
| 000008 | Red 1 | 1.8 | 000060L6 | Reserved |
| 000009 | Red 1 | 1.9 | 000039L6 | Reserved |
| 000010 | Red 1 | 1.10 | 000047L6 | Reserved |
| 000011 | Red 1 | 2.1 | 000023L6 | Reserved |
| 000012 | Red 1 | 2.2 | 000041L6 | Reserved |
| 000013 | Red 1 | 2.3 | 000022L6 | Occupied |
| 000014 | Red 1 | 2.4 | | Empty |
| 000015 | Red 1 | 2.5 | | Empty |
| 000016 | Red 1 | 2.6 | 000030L6 | Reserved |
| 000017 | Red 1 | 2.7 | 000032L6 | Reserved |
| 000018 | Red 1 | 2.8 | 000052L6 | Reserved |
| 000019 | Red 1 | 2.9 | 000046L6 | Reserved |
| 000020 | Red 1 | 2.10 | 000010L6 | Reserved |
| 000021 | Red 1 | 3.1 | 000011L6 | Reserved |
| 000022 | Red 1 | 3.2 | 000012L6 | Reserved |
| 000023 | Red 1 | 3.3 | | Empty |
| 000024 | Red 1 | 3.4 | | Empty |
| 000025 | Red 1 | 3.5 | | Empty |
| 000026 | Red 1 | 3.6 | 000027L6 | Reserved |
| 000027 | Red 1 | 3.7 | | Empty |
| 000028 | Red 1 | 3.8 | 000002L6 | Reserved |

Total Items 60 Total Selected 3 First Selection 20

Block Slots If Not To Be Re-used

If the Slots are not to be reused for other Volumes they can be blocked and removed from the available Slots listing.

To block the Slots select the required Slots by clicking, Shift+Click and/or Ctrl+Click. Right click the highlighted Slots and select Slot Management > Block.



The screenshot shows a window titled "Offsite Vault" with a table of slot information. The table has five columns: Slot, Zone, Location, Volume-ID, and Status. The rows list slots from 000001 to 000029. Most slots are in "Red 1" zone and have various "Reserved" or "Empty" statuses. Slot 000013 is "Occupied". The status bar at the bottom shows "Total Items 60", "Total Selected 1", and "First Selection 43".

| Slot | Zone | Location | Volume-ID | Status |
|--------|-------|----------|-----------|----------|
| 000001 | Red 1 | 1.1 | 000063L6 | Reserved |
| 000002 | Red 1 | 1.2 | 000063L6 | Reserved |
| 000003 | Red 1 | 1.3 | 000064L6 | Reserved |
| 000004 | Red 1 | 1.4 | 000064L6 | Reserved |
| 000005 | Red 1 | 1.5 | 000065L6 | Reserved |
| 000006 | Red 1 | 1.6 | 000045L6 | Reserved |
| 000007 | Red 1 | 1.7 | 000059L6 | Reserved |
| 000008 | Red 1 | 1.8 | 000060L6 | Reserved |
| 000009 | Red 1 | 1.9 | 000039L6 | Reserved |
| 000010 | Red 1 | 1.10 | 000047L6 | Reserved |
| 000011 | Red 1 | 2.1 | 000023L6 | Reserved |
| 000012 | Red 1 | 2.2 | 000041L6 | Reserved |
| 000013 | Red 1 | 2.3 | 000022L6 | Occupied |
| 000014 | Red 1 | 2.4 | | Empty |
| 000015 | Red 1 | 2.5 | | Empty |
| 000016 | Red 1 | 2.6 | 000030L6 | Reserved |
| 000017 | Red 1 | 2.7 | 000032L6 | Reserved |
| 000018 | Red 1 | 2.8 | 000052L6 | Reserved |
| 000019 | Red 1 | 2.9 | 000046L6 | Reserved |
| 000020 | Red 1 | 2.10 | 000010L6 | Reserved |
| 000021 | Red 1 | 3.1 | 000011L6 | Reserved |
| 000022 | Red 1 | 3.2 | 000012L6 | Reserved |
| 000023 | Red 1 | 3.3 | | Empty |
| 000024 | Red 1 | 3.4 | | Empty |
| 000025 | Red 1 | 3.5 | | Empty |
| 000026 | Red 1 | 3.6 | 000027L6 | Reserved |
| 000027 | Red 1 | 3.7 | | Empty |
| 000028 | Red 1 | 3.8 | 000002L6 | Reserved |
| 000029 | Red 1 | 3.9 | 000003L6 | Reserved |

The blocked Slots can be unblocked if required by right clicking the Slot and selecting Slot Management > Unblock.

Close the Repository Usage Map window by clicking the X at the top right corner.

Update TapeMaster Display

Click in the Inventory window and press F5 on your keyboard to update the display.

[slot](#), [tapemaster](#), [technote](#), [slotting](#), [zones](#)

From: <https://rtfm.tapetrack.com/> - **TapeTrack Documentation**

Permanent link: https://rtfm.tapetrack.com/technote/reslot_volumes?rev=1649295346

Last update: **2025/01/21 22:07**

