

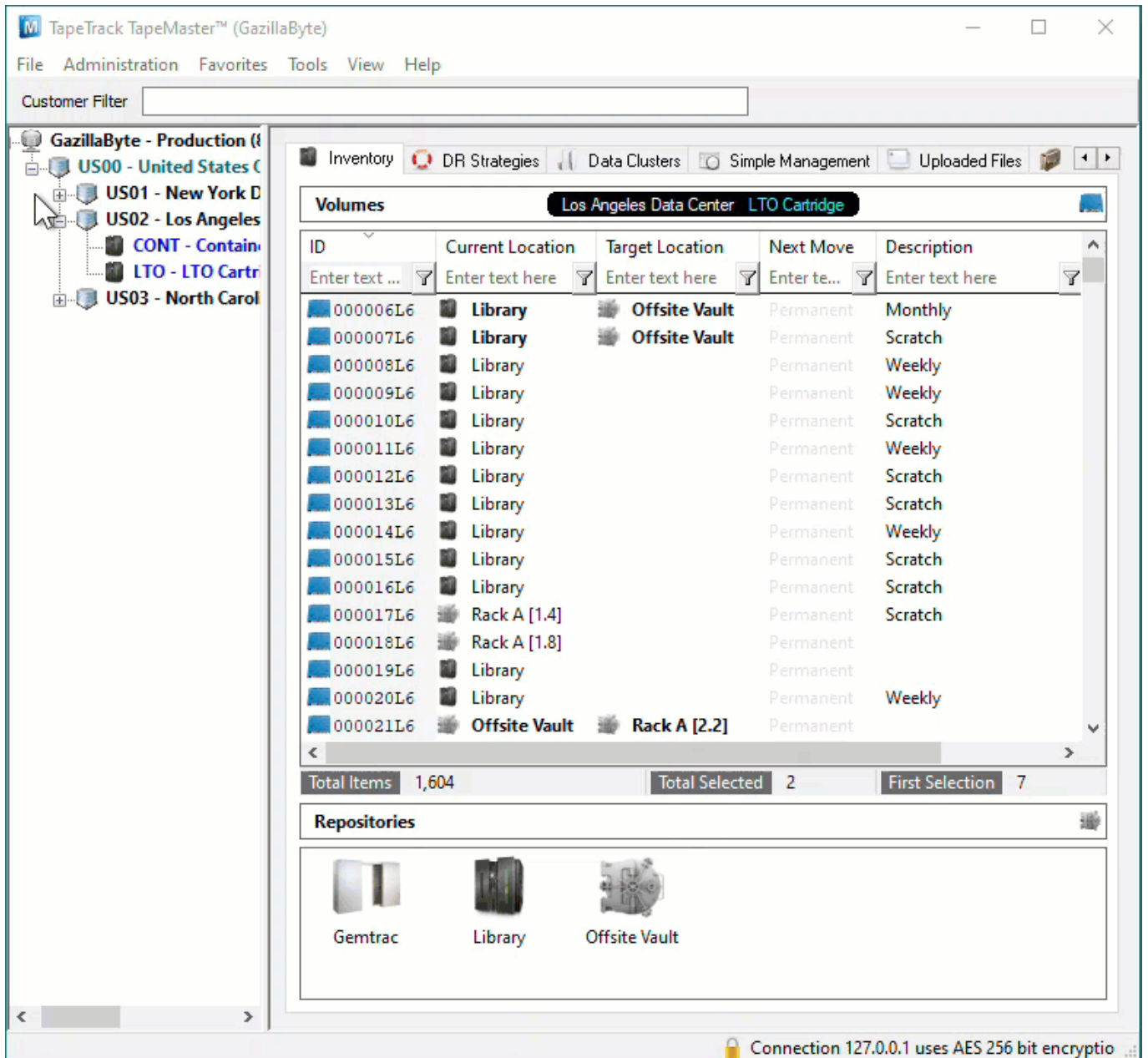
Scan To Slot Via Special Operations Slot Allocation

To use the Allocate to [Slot](#) via the Special Operations menu, the selected [Volumes](#) must be either moving to or confirmed in a [Repository](#) with allocated [Repository](#).

While this process can be used any number of [Volumes](#), you can only select a [Slot](#) for one [Volume](#) at a time so this process is best suited to one or low number of [Volumes](#). To [Slot](#) multiple [Volumes](#) more efficiently see [Scan to assign using Repository Usage Map](#).

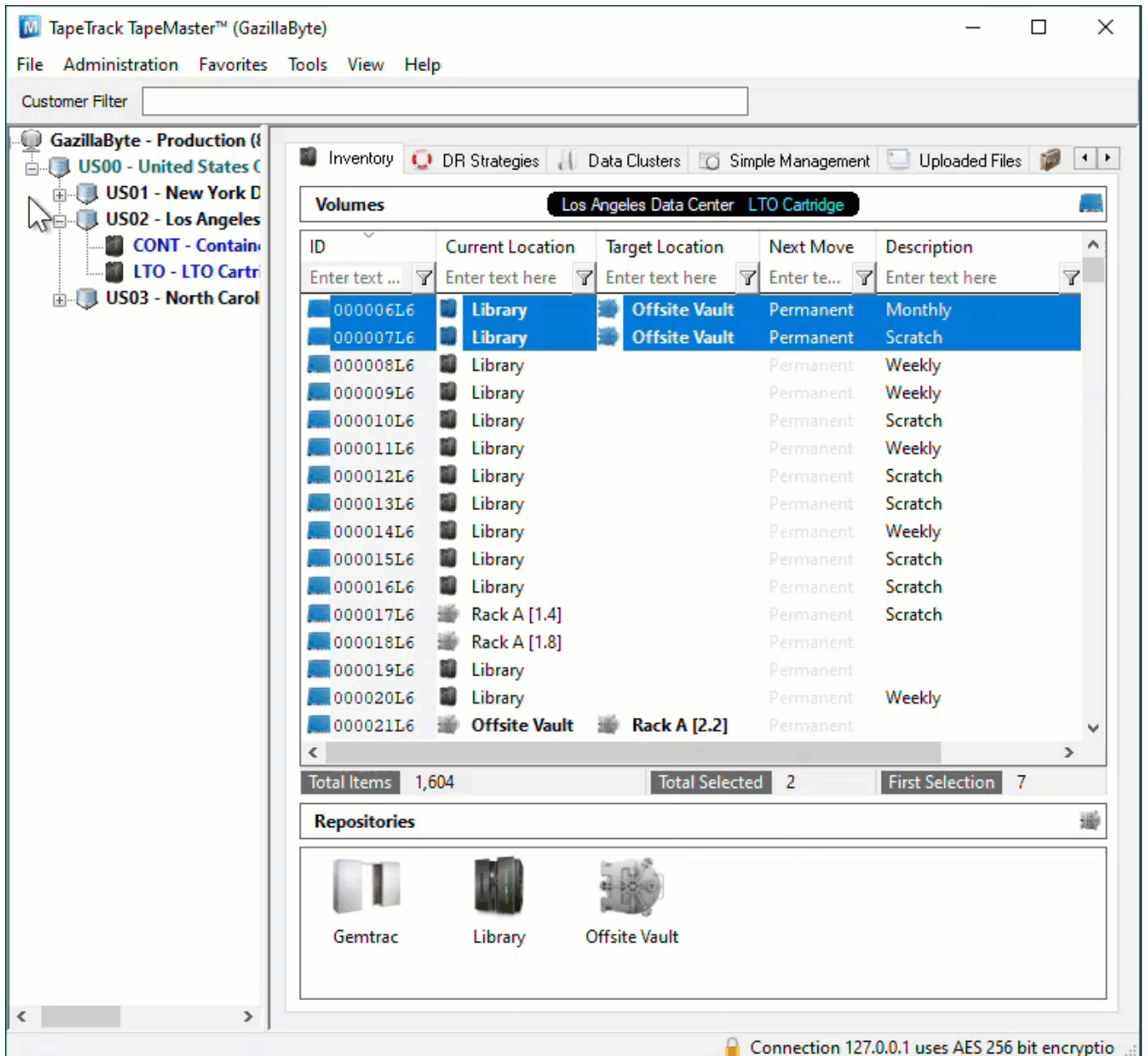
Select Volumes To Slot

Select [Volumes](#) from the Inventory window by clicking on one [Volume](#) or using Shift+Click and Ctrl+Click to select a range of [Volumes](#).



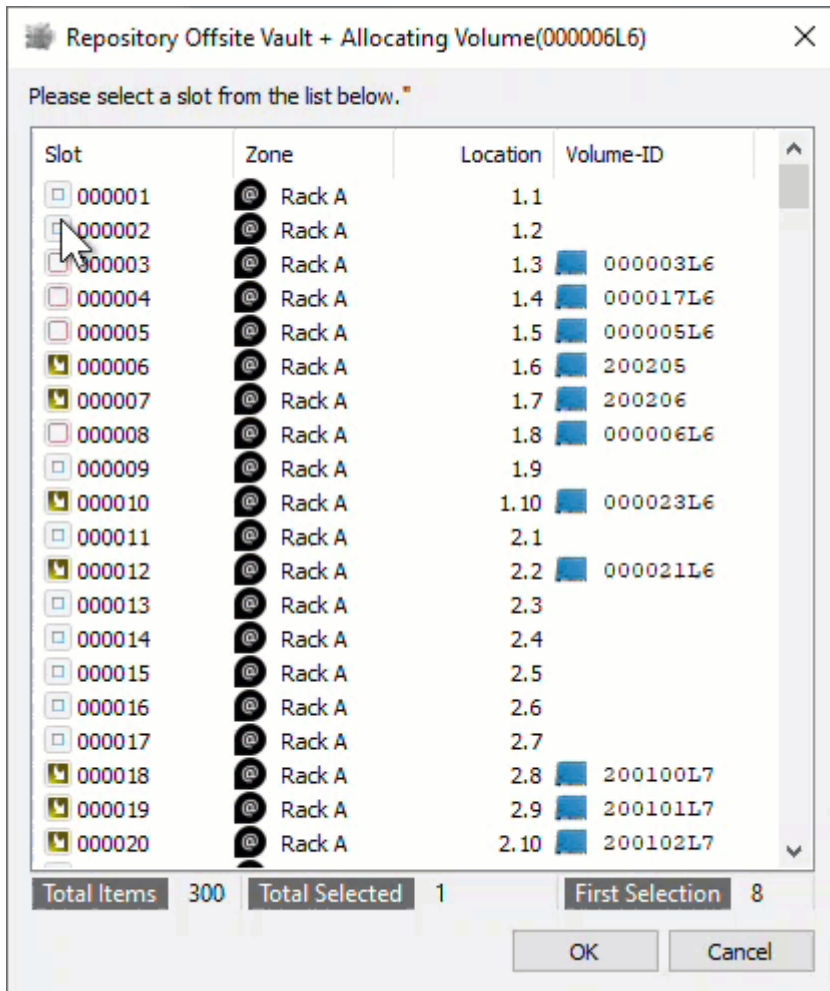
Select Slots

Right click highlighted **Volumes** and select Special Operations > Slots > Allocate To Slot



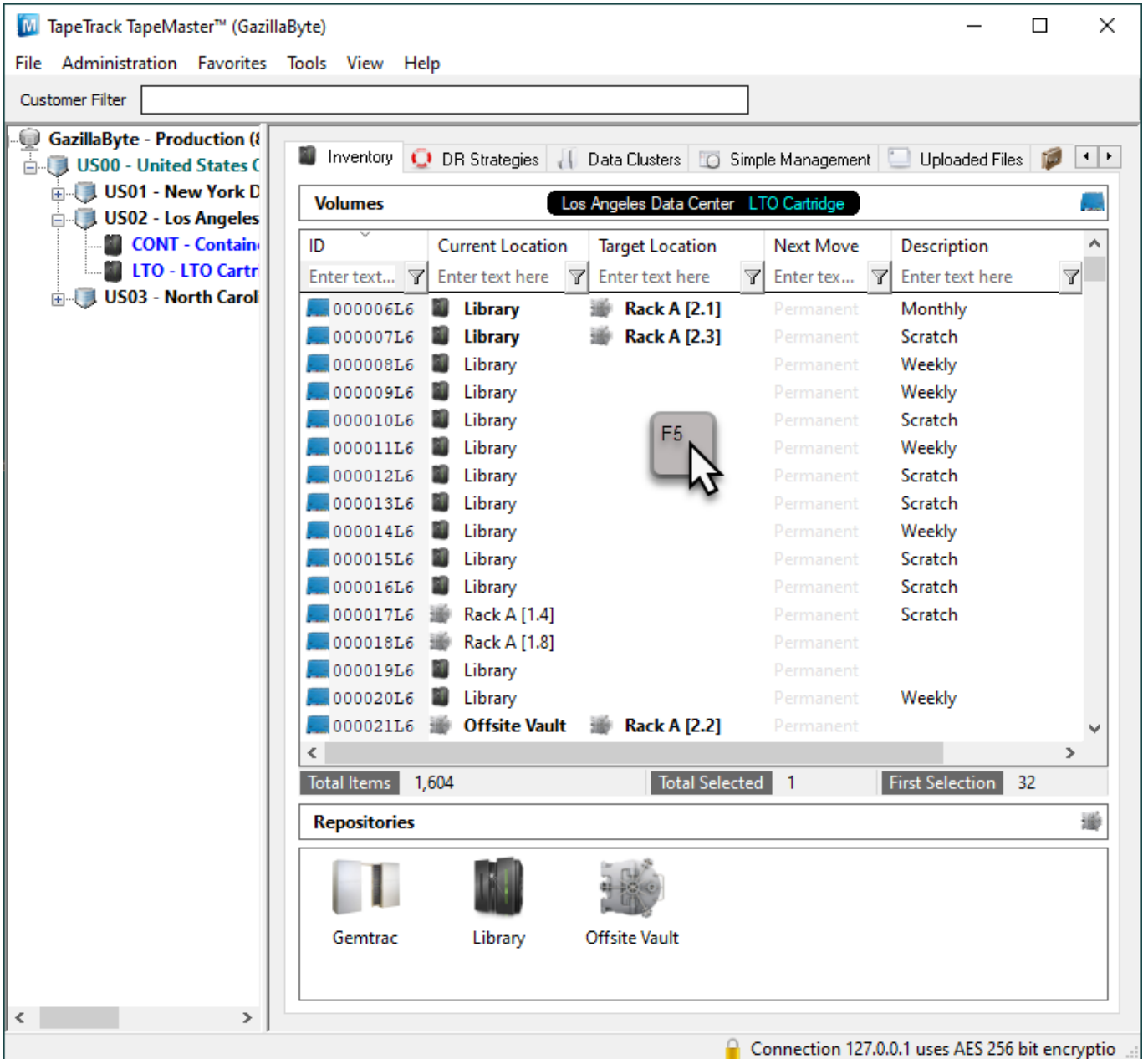
The Slot Selection window will display the Current Repository the Volume is being Slotted in and the Volume-ID currently being allocated in the top header. The main window will display Slot numbers, Zones, Slot Location, Volume-ID if Slot is occupied.

To allocate the current Volume to a Slot, click on an empty or unallocated Slot and then click OK. If you have only one Volume to Slot, the window will close. If you have multiple Volumes to Slot the window will refresh to show the next Volume-ID in the top header, following the same process for each Volume, select a Slot and press OK.



Refresh Display

Click in the Inventory window in TapeMaster and press F5 to update the display. The Scanned [Volumes](#) will now show in a move to the allocated [Slots](#).



[technote](#), [slotting](#), [master](#)

From: <https://rtfm.tapetrack.com/> - **TapeTrack Documentation**

Permanent link: https://rtfm.tapetrack.com/technote/scan_to_assign_slot_allocate

Last update: **2025/01/21 22:07**

