

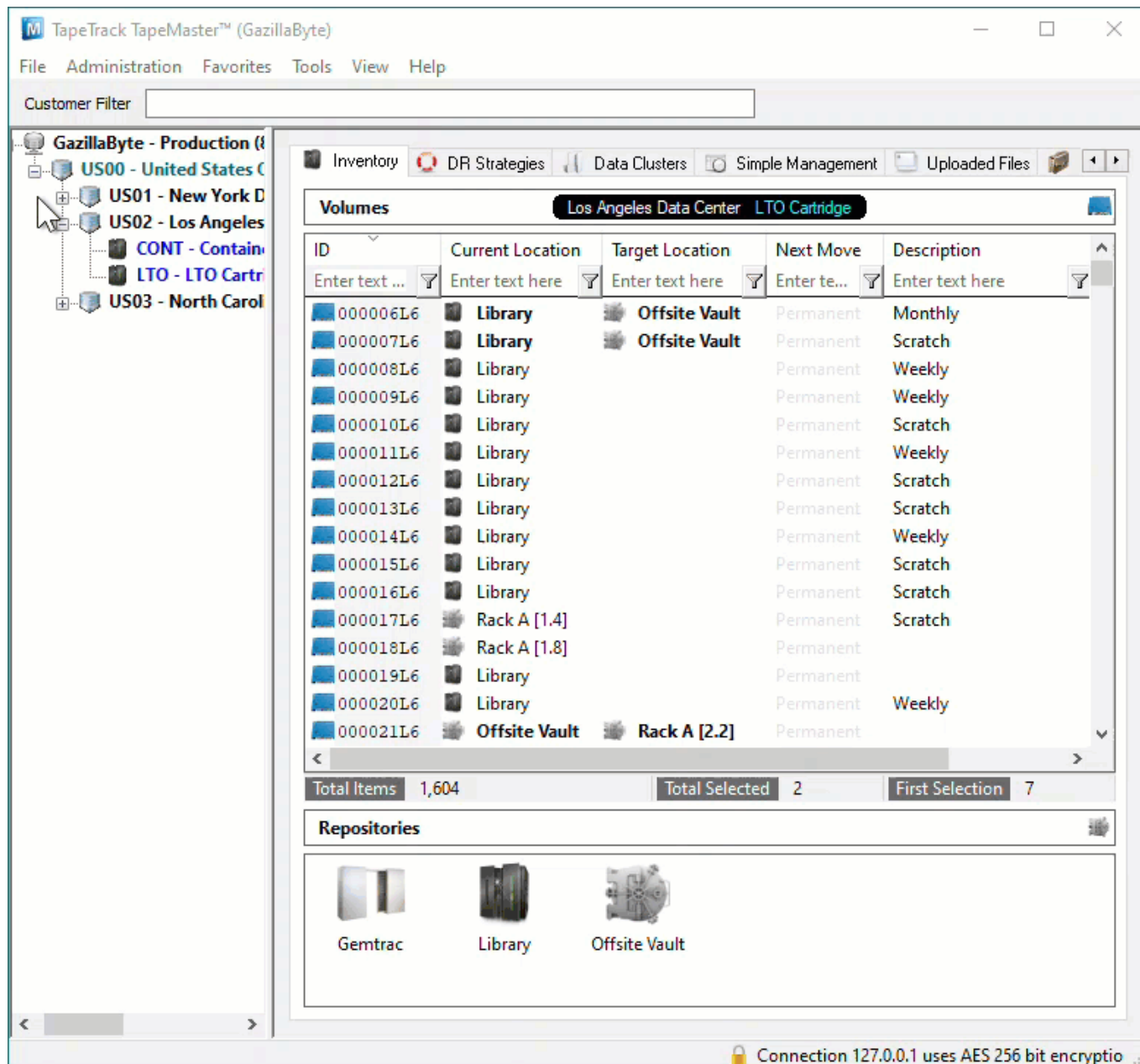
Scan To Slot Via Special Operations Slot Allocation

To use the Allocate to [Slot](#) via the Special Operations menu, the selected [Volumes](#) must be either moving to or confirmed in a [Repository](#) with allocated [Repository](#).

While this process can be used any number of [Volumes](#), you can only select a [Slot](#) for one [Volume](#) at a time so this process is best suited to one or low number of [Volumes](#). To [Slot](#) multiple [Volumes](#) more efficiently see [Scan to assign using Repository Usage Map](#).

Select Volumes To Slot

Select [Volumes](#) from the Inventory window by clicking on one [Volume](#) or using Shift+Click and Ctrl+Click to select a range of [Volumes](#).



Select Slots

Right click highlighted **Volumes** and select Special Operations > Slots > Allocate To Slot

The **Slot Selection** window will display the Current **Repository** the **Volume** is being Slotted in and the **Volume-ID** currently being allocated in the top header. The main window will display **Slot** numbers, **Zones**, **Slot Location**, **Volume-ID** if **Slot** is occupied.

To allocate the current **Volume** to a **Slot**, click on an empty or unallocated **Slot** and then click OK. If you have only one **Volume** to Slot, the window will close. If you have multiple **Volumes** to Slot the window will refresh to show the next **Volume-ID** in the top header, following the same process for each **Volume**, select a **Slot** and press OK.

Refresh Display

Click in the Inventory window in TapeMaster and press F5 to update the display. The Scanned Volumes will now show in a move to the allocated Slots.

From:

<https://rtfm.tapetrack.com/> - **TapeTrack Documentation**

Permanent link:

https://rtfm.tapetrack.com/technote/scan_to_assign_slot_allocate?rev=1628646476

Last update: **2025/01/21 22:07**

