

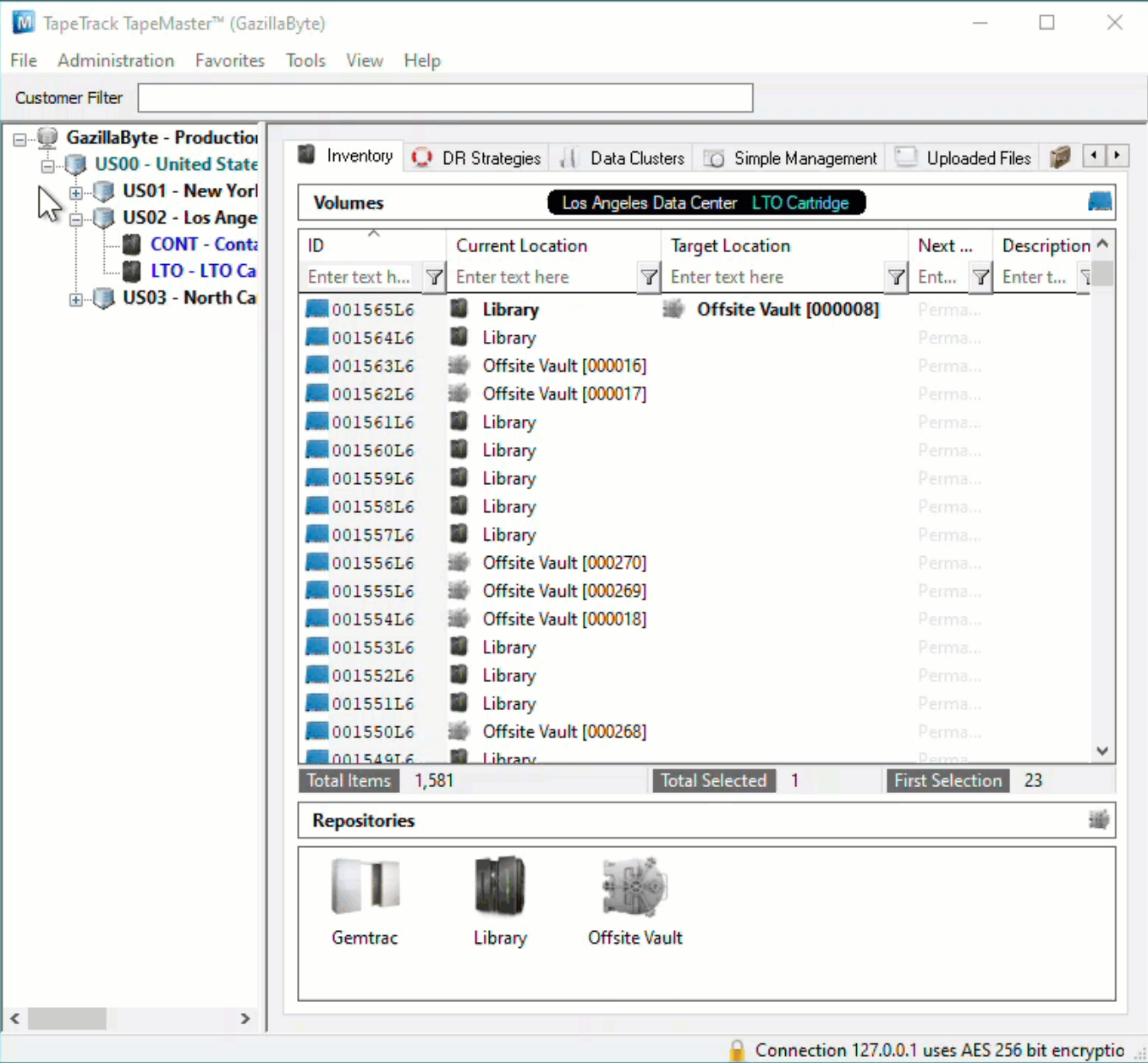
# Set Volume Slot Manually

## Prerequisites

- Target Repository must have an active Zone with vacant Slots available.
- Volume must be in a move to, or currently at, the Repository into which it is to be Slotted.

## Setting Slot For Volumes

Double click the required Volume to open the Volume Properties window.



Open the Target Repository tab.

Edit Volume: 001564L6

Datasets Attributes VeriScore™ DR Strategies Options Catalog


Identity Target Location Current Location Scanned Location Notes History

Volume Attributes

Customer-ID US02 Los Angeles Data Center

Media-ID LTO LTO Cartridge

Volume-ID 001564L6



Update Statistics

Save Cancel Help

If the Volume is located in another Repository, other than the one it is to be Slotted in, you will need to select the required Repository by selecting the Repository from the drop down list in the Virtual Location Repository field. Click Yes to open the Slot Allocation window.

Edit Volume: 001564L6

Datasets	Attributes	VeriScore™	DR Strategies	Options	Catalog
Identity	Target Location	Current Location	Scanned Location	Notes	History

Virtual Location	
Repository	Library
Physical Location	
Zone	No-Alloc
Slot	0
Update Statistics	
When	
Date	Monday, July 26, 2021 (0 days ago)
Time	14:14:20
UTC Offset	600 minutes
Time at source	Monday, July 26, 2021 - 14:14:20
Time Zone	AUS Eastern Standard Time
From	
Machine Name	127.0.0.1 (GazillaByte)
Details	
Connection Count	2,513
First Connection	Sunday, August 04, 2019 - 16:44:36
Last Connection	Monday, July 26, 2021 - 09:37:42
Interface	TapeTrack TapeMaster
Operating System	Windows
As	
User-ID	doco
User Name	doco

Save Cancel Help

If the Volume is already in a move to, or located at, the Slotting Repository, under Virtual Location click in the "Slot" field and then click the ... button to open the Slot Allocation window. Click on the required unallocated Slot and then click OK to assign the Volume to that slot. Click Save on the Volume Properties window to save the Target Slot data.

From:

<https://rtfm.tapetrack.com/> - **TapeTrack Documentation**

Permanent link:

[https://rtfm.tapetrack.com/technote/set\\_slot\\_manually?rev=1627273637](https://rtfm.tapetrack.com/technote/set_slot_manually?rev=1627273637)

Last update: **2025/01/21 22:07**

