

Home Slot

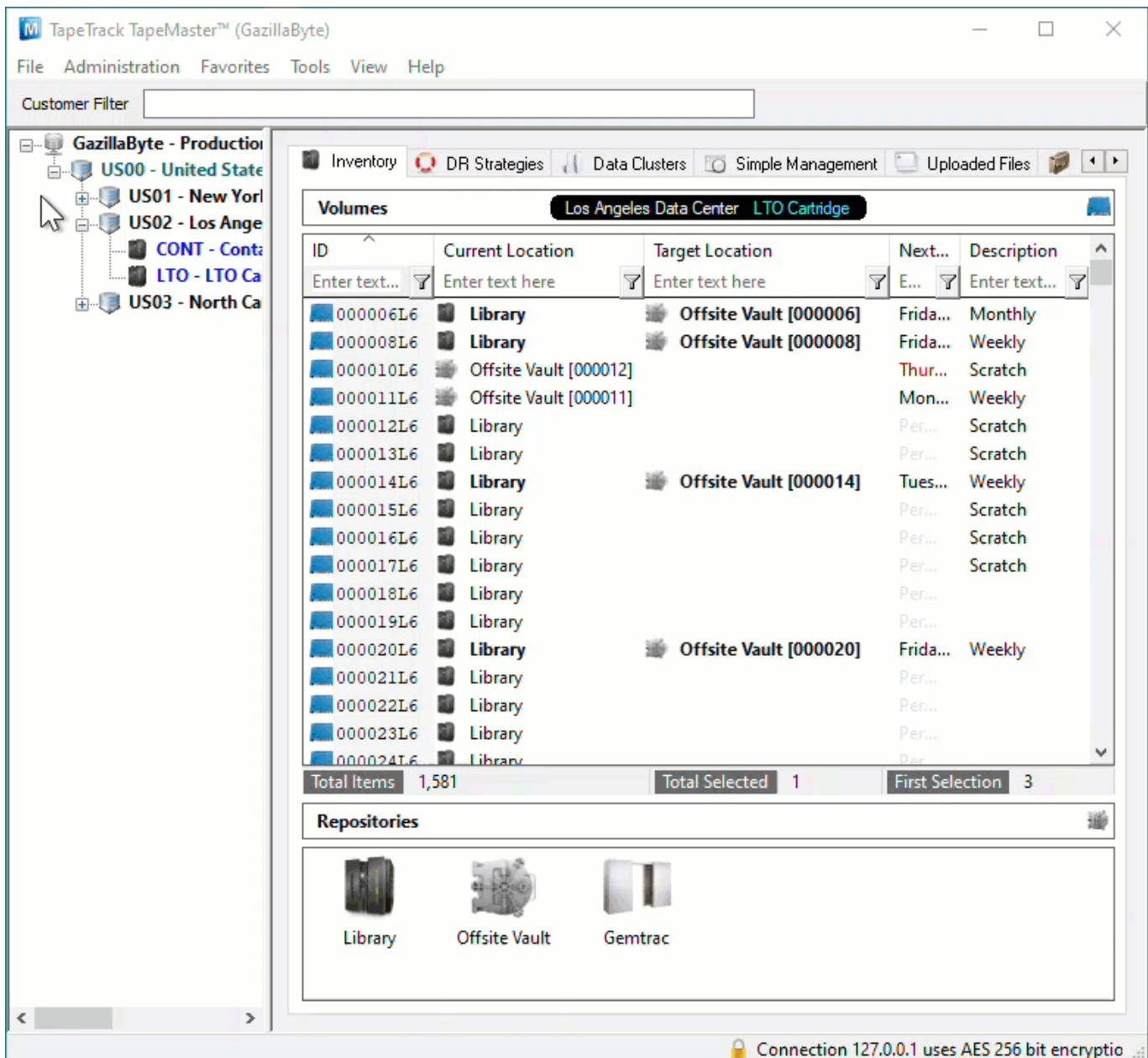
When Volumes are slotted by the Command Line Program [TMSS10SlotAllocation](#) the Slots assigned are determined by the Repository Options setting, either [IntelliSlot](#) or First Available.

Assigning a Volume with a Home Slot will have [TMSS10SlotAllocation](#) attempt to slot that Volume to its Home Slot first, if that Slot is unavailable the Volume will be Slotted according to the preset protocol.

Assigning A Home Slot

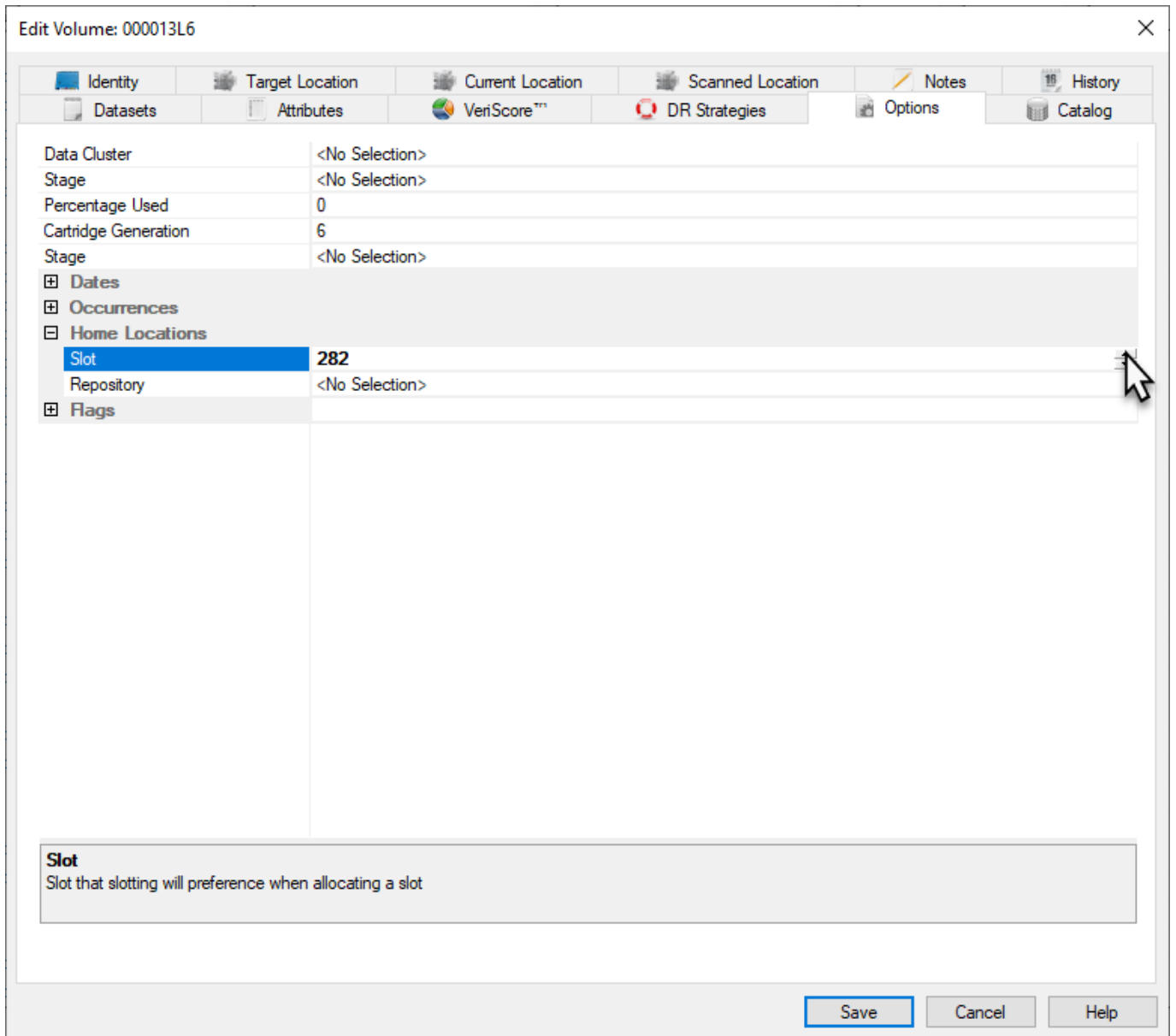
Volume Already Slotted In Required Home Slot

If the Volume is already Slotted in, or assigned (Target) to the Slot, right click on the Volume and select Special Operations > Capture Home Slot.



To assign a Volume to a Home Slot, from the Inventory window in TapeMaster:

- Right-click a Volume and select Properties
- Select the Options tab
- Expand the Home Locations
- In the Slot field, enter the required Home Slot number, by using the incrementor arrows or typing in the number
- Click Save to update the data and close the Properties window.



If a Volume is Slotted in multiple Repositories (eg Offsite Vault and Racking), **TMSS10SlotAllocation** will attempt to assign it to its Home Slot in all Repositories.

If **Restore Home Slot** is set to true, the Volumes will be placed in their Home Slot without the need to run **TMSS10SlotAllocation**. Having **Restore Home Slot** set to true in more than one Repository may result in each Slot being assigned to more that Volume, resulting in the possibility of multiple Volumes assigned to a Slot. To avoid multiple Volumes being assigned to a Slot, ensure each Volume is assigned to a unique Home Slot.

[update doco, home, slot](#)

From: <https://rtfm.tapetrack.com/> - **TapeTrack Documentation**

Permanent link: https://rtfm.tapetrack.com/technote/volume_home_slot?rev=1627256851

Last update: **2025/01/21 22:07**

