

# Home Slot

When Volumes are slotted by the Command Line Program [TMSS10SlotAllocation](#) the Slots assigned are determined by the Repository Options setting, either [IntelliSlot](#) or First Available.

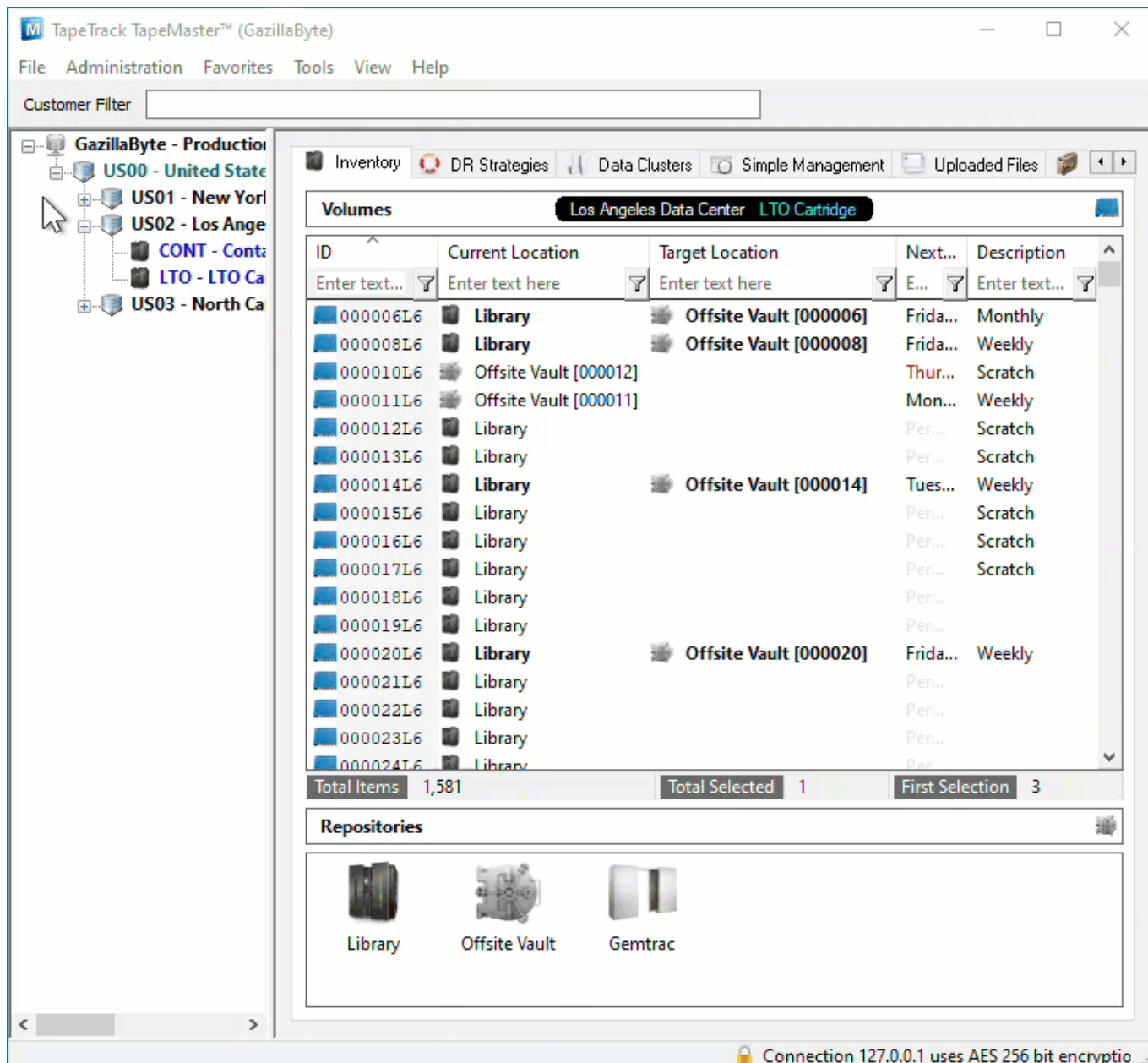
Assigning a Volume with a Home Slot will have [TMSS10SlotAllocation](#) attempt to slot that Volume to its Home Slot first, if that Slot is unavailable the Volume will be Slotted according to the pre-set protocol.

## Assigning A Home Slot

### Volume Already Slotted In Required Home Slot

If the Volume is already Slotted in (eg. Volume 000010L6), or assigned to the Slot (eg. Volume 000006L6), right click on the Volume and select Special Operations > Capture Home Slot.

Using this method you can set the Home Slot of one or multiple Volumes in the one operation.



If you use this process with a Volume that is not Slotted or assigned to a Slot (eg. Volume 000012L6) the Home Slot will be set to zero (no Home Slot).

If you use this process on a Volume that already has a Home Slot, the Home Slot value will be set to the Current assigned Slot.

## Setting Home Slot Via Volume Properties

To assign a Volume to a Home Slot, from the Inventory window in TapeMaster:

- Right-click a Volume and select Properties
- Select the Options tab
- Expand the Home Locations
- In the Slot field, enter the required Home Slot number, by using the incrementor arrows or typing in the number
- Click Save to update the data and close the Properties window.

Edit Volume: 000013L6

Identity	Target Location	Current Location	Scanned Location	Notes	History
Datasets	Attributes	VeriScore™	DR Strategies	Options	Catalog

Data Cluster	<No Selection>
Stage	<No Selection>
Percentage Used	0
Cartridge Generation	6
Stage	<No Selection>
⊕ Dates	
⊕ Occurrences	
⊖ Home Locations	
Slot	282
Repository	<No Selection>
⊕ Flags	

**Slot**  
Slot that slotting will preference when allocating a slot

Save Cancel Help

If a Volume is Slotted in multiple Repositories (eg Offsite Vault and Racking), [TMSS10SlotAllocation](#) will attempt to assign it to its Home Slot in all Repositories.

If Restore Home Slot is set to true, the Volumes will be placed in their Home Slot without the need to run [TMSS10SlotAllocation](#). Having Restore Home Slot set to true in more than one Repository may result in each Slot being assigned to more than one Volume, resulting in the possibility of multiple Volumes assigned to a Slot. To avoid multiple Volumes being assigned to a Slot, ensure each Volume is assigned to a unique Home Slot.

[update doco, home, slot](#)

From:  
<https://rtfm.tapetrack.com/> - **TapeTrack Documentation**

Permanent link:  
[https://rtfm.tapetrack.com/technote/volume\\_home\\_slot?rev=1627258233](https://rtfm.tapetrack.com/technote/volume_home_slot?rev=1627258233)

Last update: **2025/01/21 22:07**

