

Home Slot

When [Volumes](#) are Slotted by the Command Line Program

[\[\[cli:tmss10slotallocation|TMSS10SlotAllocation\]](#) the Slots assigned are determined by the Repository Options setting, either [IntelliSlot](#) or First Available.

Assigning a [Volume](#) with a Home Slot will have [TMSS10SlotAllocation](#) attempt to slot that [Volume](#) to its Home Slot first, if that Slot is unavailable the [Volume](#) will be Slotted according to the pre-set protocol.

Prerequisites

The required Repository must have an active [Zone assigned](#) with adequate Slots.

See:

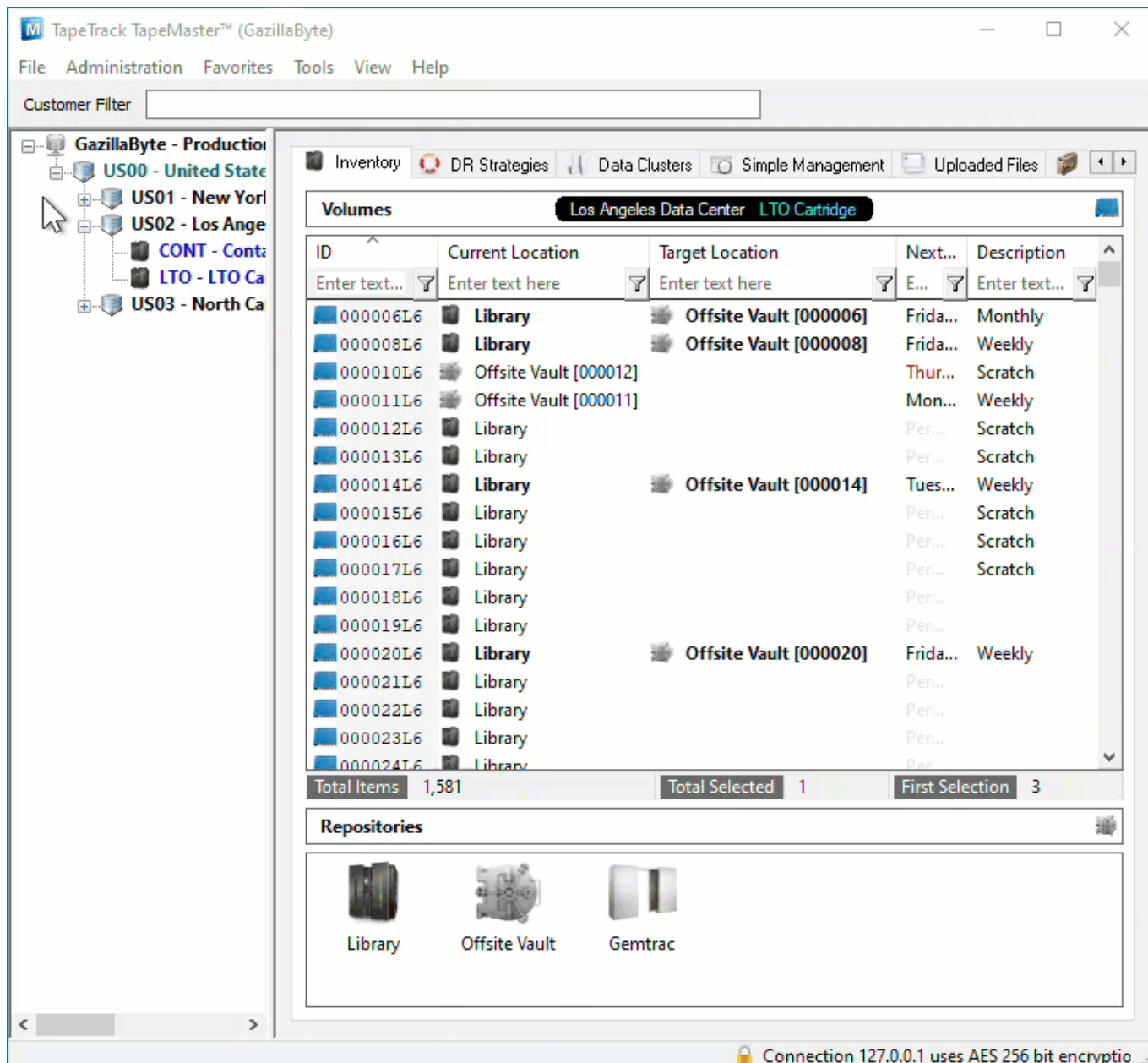
- [Creating Zones](#)
- [Assigning Zones](#)

Assigning A Home Slot

Volume Already Slotted In Required Home Slot

If the [Volume](#) is already Slotted in (eg. Volume 000010L6), or assigned to the Slot (eg. Volume 000006L6), right click on the [Volume](#) and select Special Operations > Capture Home Slot.

Using this method you can set the Home Slot of one or multiple [Volumes](#) in the one operation.



If you use this process with a **Volume** that is not Slotted or assigned to a Slot (eg. Volume 000012L6) the Home Slot will be set to zero (no Home Slot).

If you use this process on a **Volume** that already has a Home Slot, the Home Slot value will be set to the Current assigned Slot.

Setting Home Slot Via Volume Properties

To assign a **Volume** to a Home Slot, from the Inventory window in TapeMaster:

- Right-click a **Volume** and select Properties.
- Select the Options tab.
- Expand the Home Locations by clicking the +.
- In the Slot field enter the required Home Slot number by using the incrementor arrows (eg. 3) or typing in the number (eg. 212).
- Click Save to update the data and close the Properties window.

Edit Volume: 000012L6

Datasets Attributes VeriScore™ DR Strategies Options Catalog

Identity Target Location Current Location Scanned Location Notes History

Volume Attributes

Customer-ID US02 Los Angeles Data Center

Media-ID LTO LTO Cartridge

Volume-ID 000012L6

000012L6

Update Statistics

Save Cancel Help



If a [Volume](#) is Slotted in multiple Repositories (eg Offsite Vault and Racking), [TMSS10SlotAllocation](#) will attempt to assign it to its Home Slot in all Repositories.

Slotting Volumes In Home Slot Automatically

If Restore Home Slot is set to True, the [Volumes](#) will be placed in their Home Slot without the need to run [TMSS10SlotAllocation](#).

To set Restore Home Slot right click the required Repository and select Properties.

Edit Repository: Offsite Vault

Identity

Zones

Slot Usage

Options

Usage History

Movement History

Certification

Attributes

Customer-ID

US02

Los Angeles Data Center

Media-ID

LTO

LTO Cartridge

Repository-ID

OFFS

Description

Offsite Vault

Update Statistics

Save

Cancel

Help



Ensure each **Volume** has a unique Home Slot value. Assigning a Slot to more than one **Volume's** Home Slot value can result in multiple **Volumes** being Slotted in the one Slot.

[update doco, home, slot](#)

From:

<https://rtfm.tapetrack.com/> - **TapeTrack Documentation**

Permanent link:

https://rtfm.tapetrack.com/technote/volume_home_slot?rev=1627263323

Last update: **2025/01/21 22:07**

