

Home Slot

When [Volumes](#) are Slotted by the Command Line Program

[\[\[cli:tmss10slotallocation\]TMSS10SlotAllocation](#) the Slots assigned are determined by the [Repository Options](#) setting, either [IntelliSlot](#) or First Available.

Assigning a [Volume](#) with a Home Slot will have [TMSS10SlotAllocation](#) attempt to slot that [Volume](#) to its Home Slot first, if that Slot is unavailable the [Volume](#) will be Slotted according to the pre-set protocol.

Prerequisites

The required [Repository](#) must have an active [Zone assigned](#) with adequate Slots.

See:

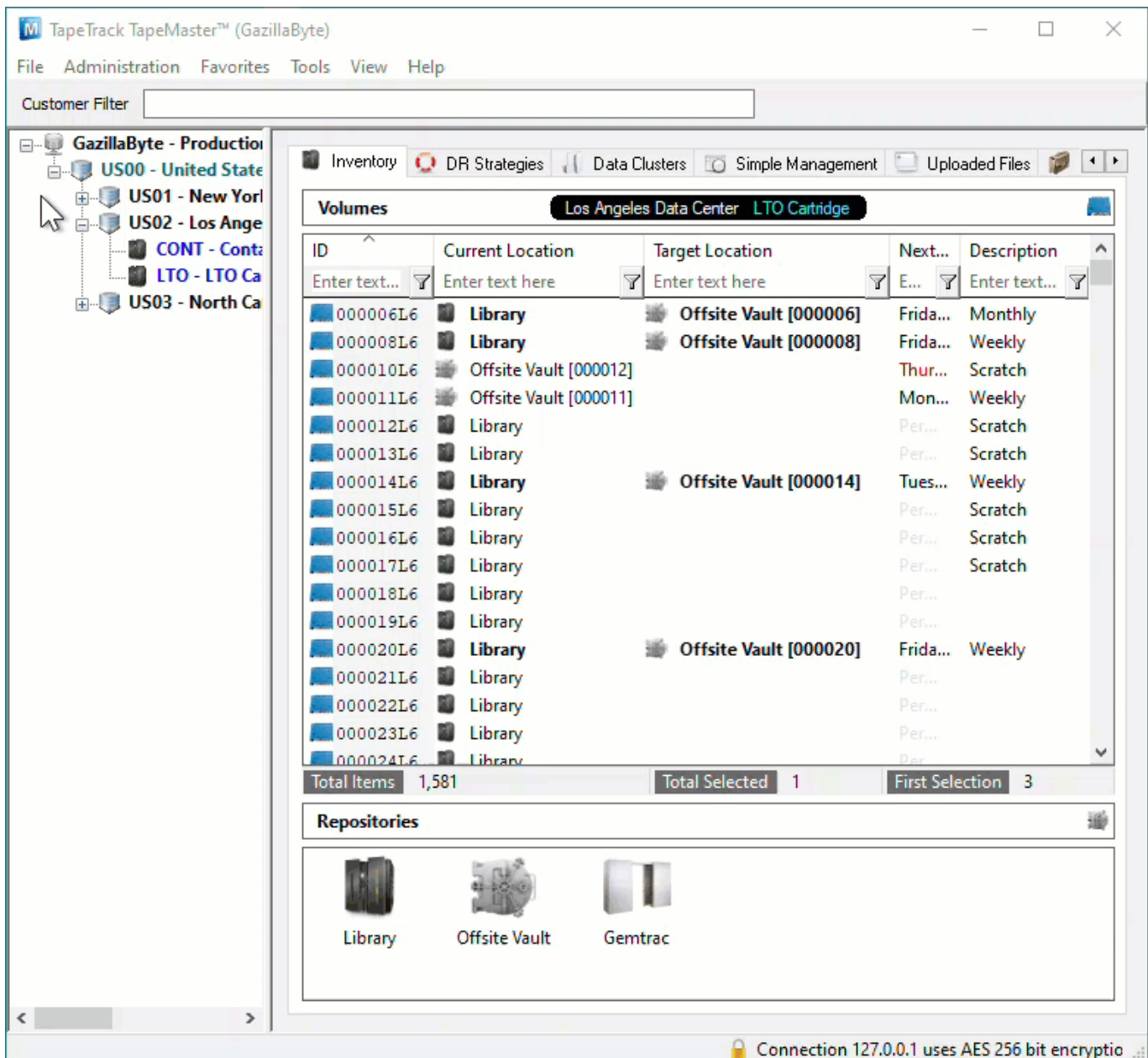
- [Creating Zones](#)
- [Assigning Zones](#)

Assigning A Home Slot

Volume Already Slotted In The Required Home Slot

If the [Volume](#) is already Slotted in (eg. Volume 000010L6), or assigned to the Slot (eg. Volume 000006L6), right click on the [Volume](#) and select Special Operations > Capture Home Slot.

Using this method you can set the Home Slot of one or multiple [Volumes](#) in the one operation.



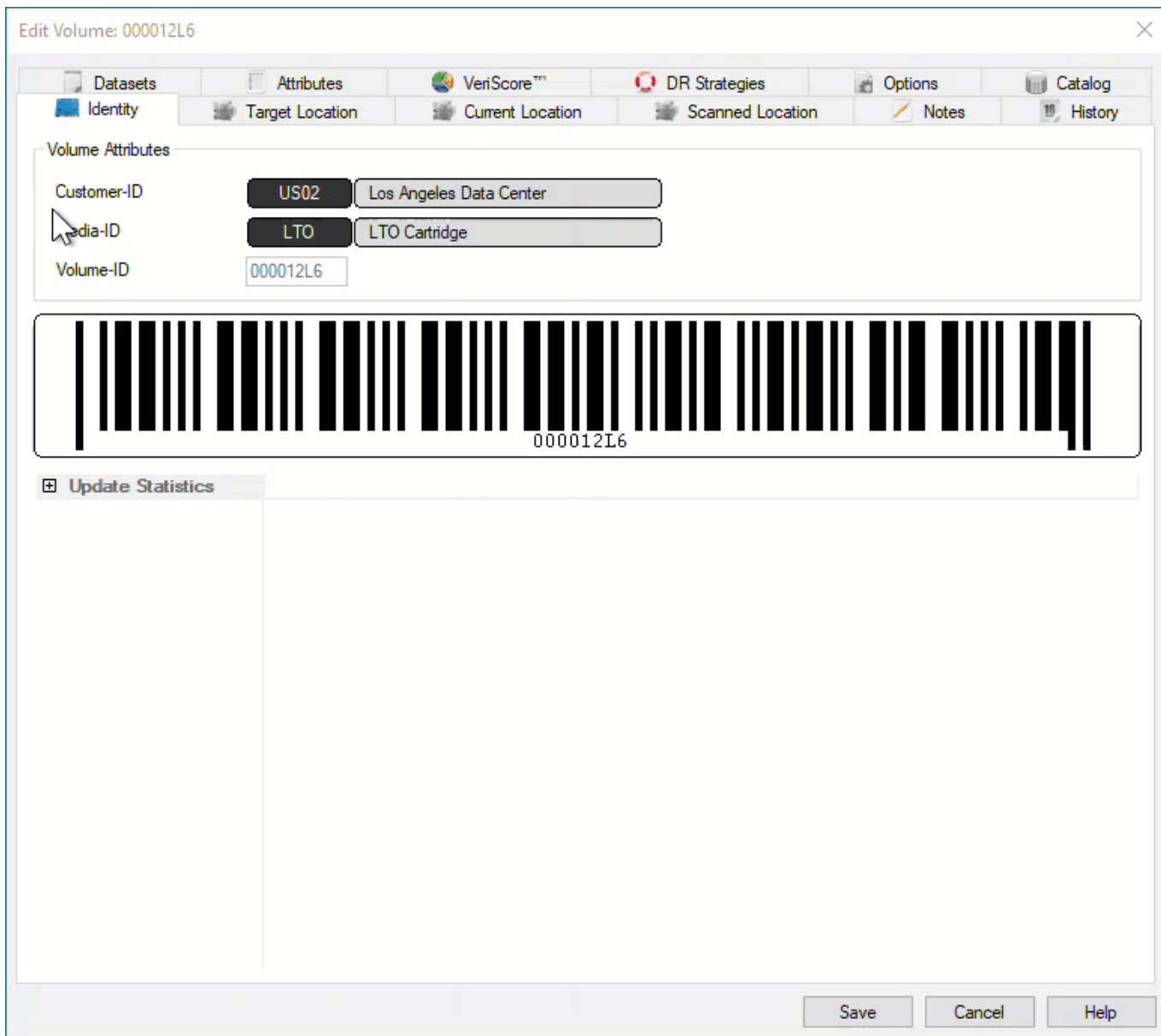
If you use this process with a **Volume** that is not Slotted or assigned to a Slot (eg. Volume 000012L6) the Home Slot will be set to zero (no Home Slot).


If you use this process on a **Volume** that already has a Home Slot, the Home Slot value will be set to the Current assigned Slot.

Setting Home Slot Via Volume Properties

To assign a **Volume** to a Home Slot, from the Inventory window in TapeMaster:

- Right-click a **Volume** and select Properties.
- Select the Options tab.
- Expand the Home Locations by clicking the +.
- In the Slot field enter the required Home Slot number by using the incrementor arrows (eg. 3) or typing in the number (eg. 212).
- Click Save to update the data and close the Properties window.



 If a [Volume](#) is Slotted in multiple [Repositories](#) (eg Offsite Vault and Racking), [TMSS10SlotAllocation](#) will attempt to assign it to its Home Slot in all [Repositories](#).

Slotting Volumes In Home Slot Automatically

If `Restore Home Slot` is set to `True`, the [Volumes](#) will be placed in their Home Slot without the need to run `TMSS10SlotAllocation`.

To set `Restore Home Slot` right click the required [Repository](#) and select `Properties`.

Edit Repository: Offsite Vault


Identity Zones Slot Usage Options Usage History Movement History Certification

Attributes

Customer-ID	US02	Los Angeles Data Center
Media-ID	LTO	LTO Cartridge
Repository-ID	OFFS	
Description	Offsite Vault	

Update Statistics

Save Cancel Help

 Ensure each **Volume** has a unique Home Slot value. Assigning a Slot to more than one **Volume's** Home Slot value can result in multiple **Volumes** being Slotted in the one Slot.

[update doco, home, slot](#)

From:
<https://rtfm.tapetrack.com/> - **TapeTrack Documentation**

Permanent link:
https://rtfm.tapetrack.com/technote/volume_home_slot?rev=1627263418

Last update: **2025/01/21 22:07**

