

Home Slot

When [Volumes](#) are Slotted by the Command Line Program [TMSS10SlotAllocation](#) the Slots assigned are determined by the [Repository](#) Options setting, either IntelliSlot or First Available.

Assigning a [Volume](#) with a Home Slot will have [TMSS10SlotAllocation](#) attempt to slot that [Volume](#) to its Home Slot first, if that Slot is unavailable the [Volume](#) will be Slotted according to the pre-set protocol.

When [Volumes](#) are Slotted via Restore Home Slot Option, the [Volumes](#) will be Slotted in their Home Slot unless the Home Slot value is zero.

Prerequisites

The required [Repository](#) must have an active [Zone assigned](#) with adequate Slots.

See:

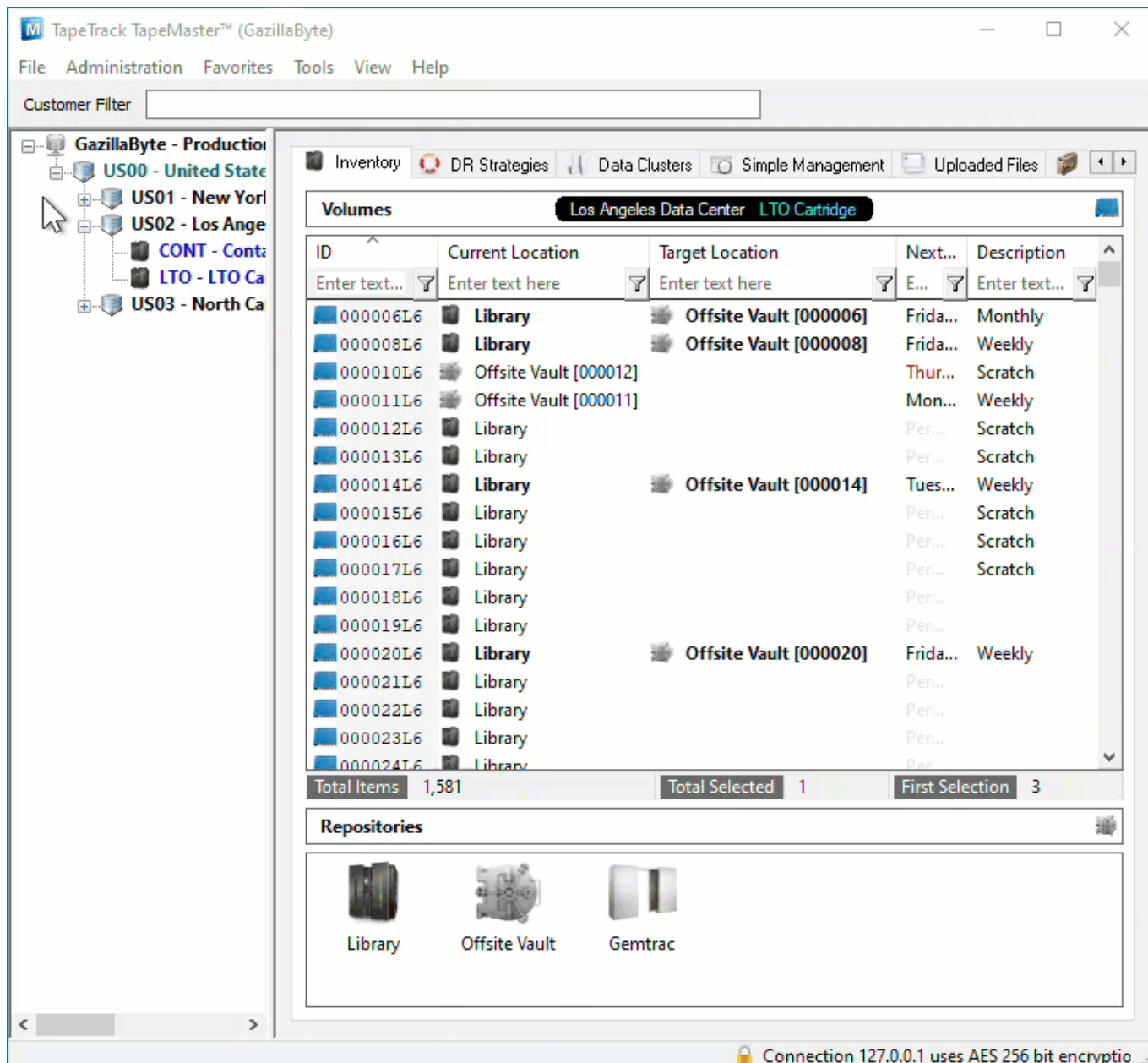
- [Creating Zones](#)
- [Assigning Zones](#)

Assigning A Home Slot

Volume Already Slotted In The Required Home Slot

If the [Volume](#) is already Slotted in (eg. Volume 000010L6), or assigned to the Slot (eg. Volume 000006L6), right click on the [Volume](#) and select Special Operations > Capture Home Slot.

Using this method you can set the Home Slot of one or multiple [Volumes](#) in the one operation.



If you use this process with a [Volume](#) that is not Slotted or assigned to a Slot (eg. Volume 000012L6) the Home Slot will be set to zero (no Home Slot).

If you use this process on a [Volume](#) that already has a Home Slot, the Home Slot value will be set to the Current assigned Slot.

Setting Home Slot Via Volume Properties

To assign a [Volume](#) to a Home Slot, from the Inventory window in TapeMaster:

- Right-click a [Volume](#) and select Properties.
- Select the Options tab.
- Expand the Home Locations by clicking the +.
- In the Slot field enter the required Home Slot number by using the incrementor arrows (eg. 3) or typing in the number (eg. 212).
- Click Save to update the data and close the Properties window.

Edit Volume: 000012L6

Datasets Attributes VeriScore™ DR Strategies Options Catalog

Identity Target Location Current Location Scanned Location Notes History

Volume Attributes

Customer-ID US02 Los Angeles Data Center

Media-ID LTO LTO Cartridge

Volume-ID 000012L6

000012L6

Update Statistics

Save Cancel Help



If a [Volume](#) is Slotted in multiple [Repositories](#) (eg Offsite Vault and Racking), [TMSS10SlotAllocation](#) will attempt to assign it to its Home Slot in all [Repositories](#).

Slotting Volumes In Home Slot Automatically

Slotting Via TMSS10SlotAllocation

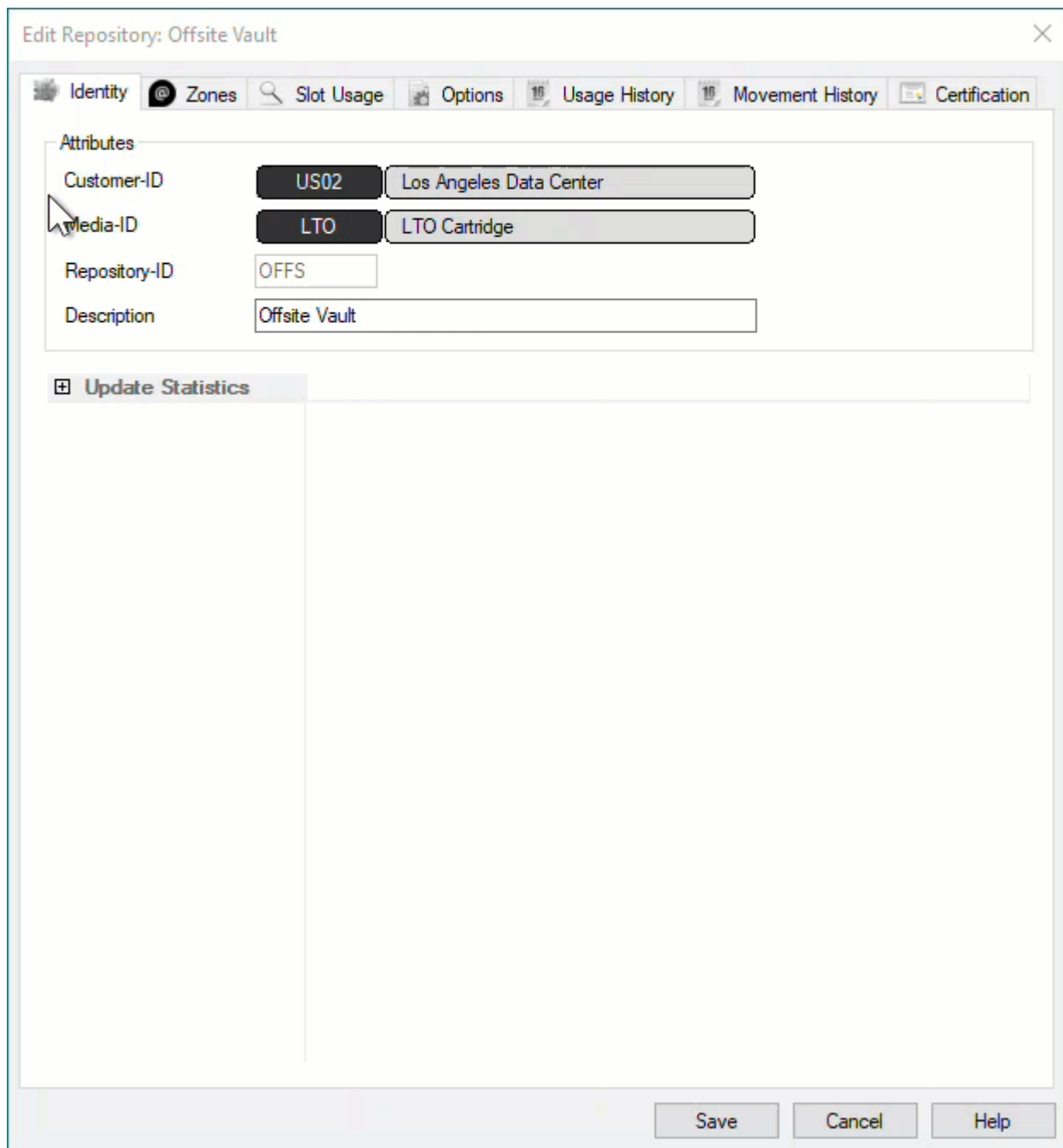
Executing [TMSS10SlotAllocation](#) will attempt to Slot the [Volumes](#) in the assigned Home Slot. If the Home Slot is occupied [TMSS10SlotAllocation](#) will Slot the [Volume](#) in an alternative Slot.

Slotting Via Restore Home Slot Option

If Restore Home Slot is set to True, the [Volumes](#) will be placed in their Home Slot without the need

to run TMSS10SlotAllocation.

To set Restore Home Slot right click the required [Repository](#) and select Properties.



Edit Repository: Offsite Vault

Identity Zones Slot Usage Options Usage History Movement History Certification

Attributes

Customer-ID US02 Los Angeles Data Center

Media-ID LTO LTO Cartridge

Repository-ID OFFS

Description Offsite Vault

+ Update Statistics

Save Cancel Help



Ensure each [Volume](#) has a unique Home Slot value. Assigning a Slot to more than one [Volume's](#) Home Slot value can result in multiple [Volumes](#) being Slotted in the one Slot.

[update doco, home, slot](#)

From:

<https://rtfm.tapetrack.com/> - **TapeTrack Documentation**

Permanent link:

https://rtfm.tapetrack.com/technote/volume_home_slot?rev=1627264057

Last update: **2025/01/21 22:07**

