

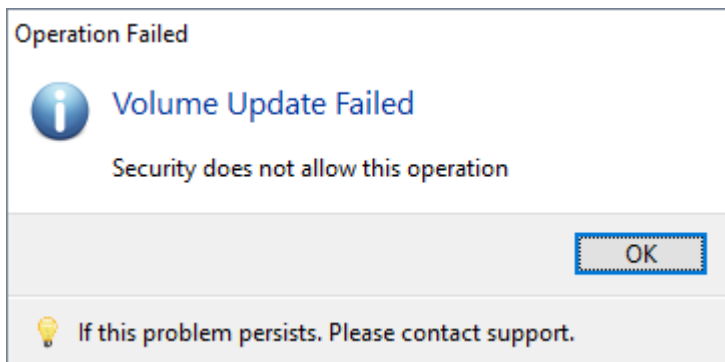
Troubleshooter: Adding Volumes

The purpose of this troubleshooter is to diagnose why volumes in TapeTrack can not be added.

To diagnose why you cannot add volumes, select the error presented:

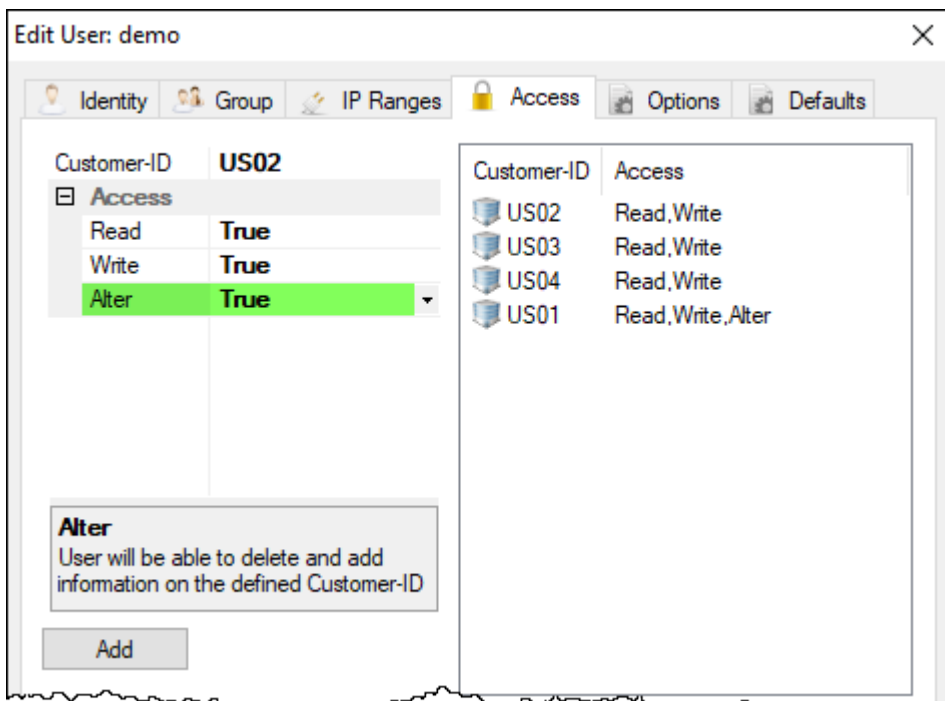
Security does not allow this operation

The error **Security does not allow this operation** indicates your user ID does not have sufficient access rights to add volumes to TapeTrack.



To add volumes from TapeTrack you will need to either:

- Have you administrator [raise your access](#) to include **Alter** rights.
- Have a user with **Alter** rights add the volumes for you.



From:
<https://rtfm.tapetrack.com/> - **TapeTrack Documentation**

Permanent link:
https://rtfm.tapetrack.com/troubleshooting/add_volumes?rev=1513559515

Last update: **2025/01/21 22:07**

