

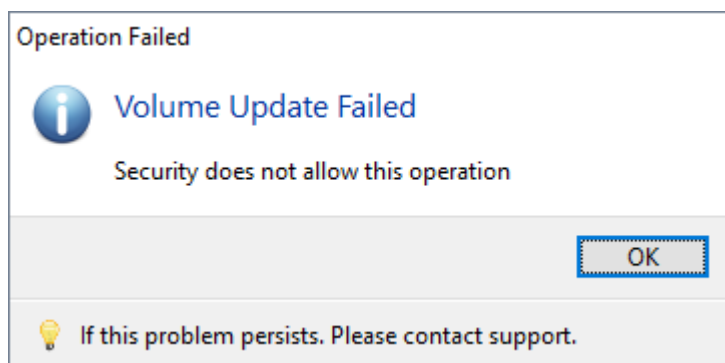
# Troubleshooter: Adding Volumes

The purpose of this troubleshooter is to diagnose why [Volumes](#) in TapeTrack cannot be added.

To diagnose why you cannot add [Volumes](#), select the error presented:

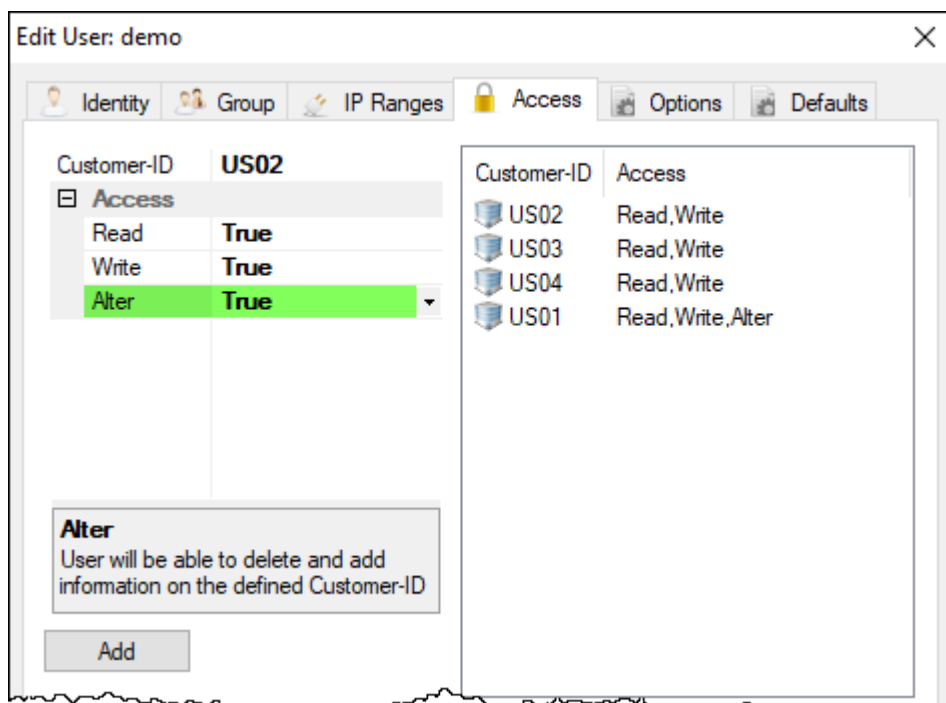
Security does not allow this operation

The error **Security does not allow this operation** indicates your user ID does not have sufficient access rights to add volumes to TapeTrack.



To add [Volumes](#) from TapeTrack you will need to either:

- Have you administrator [raise your access](#) to include **Alter** rights.
- Have a [User](#) with **Alter** rights add the [Volumes](#) for you.



Target Repository Unknown

The error **Target Repository Unknown** indicates that there is no current default [Repository](#) to add a new [Volumes](#) too.

To add new [Volumes](#) you will need to either:

- Set a current default [Repository](#) in TapeMaster by right clicking the required [Repository](#) and selecting Make Default Repository.
- Right click the required target [Repository](#) in TapeMaster and selecting Scan→To Add and Scan in the new [Volumes](#).

From:  
<https://rtfm.tapetrack.com/> - **TapeTrack Documentation**

Permanent link:  
[https://rtfm.tapetrack.com/troubleshooting/add\\_volumes?rev=1547508493](https://rtfm.tapetrack.com/troubleshooting/add_volumes?rev=1547508493)

Last update: **2025/01/21 22:07**

