

# Troubleshooter: Adding Volumes

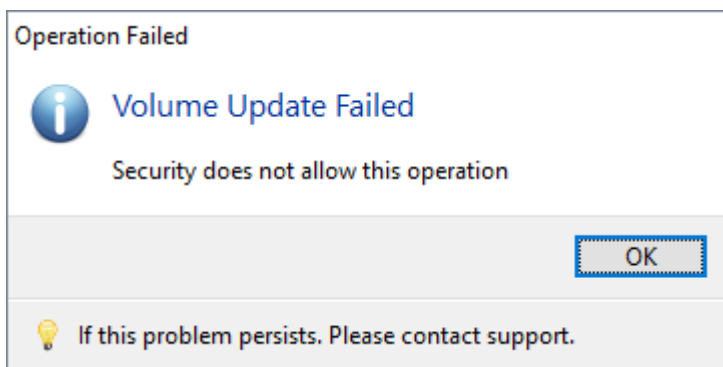
The purpose of this troubleshooter is to diagnose why [Volumes](#) in TapeTrack cannot be added.

Select the error message presented when trying to add new [Volumes](#).

- [Security Does Not Allow This Operation](#)
- [Dissallowed Volume Serial](#)

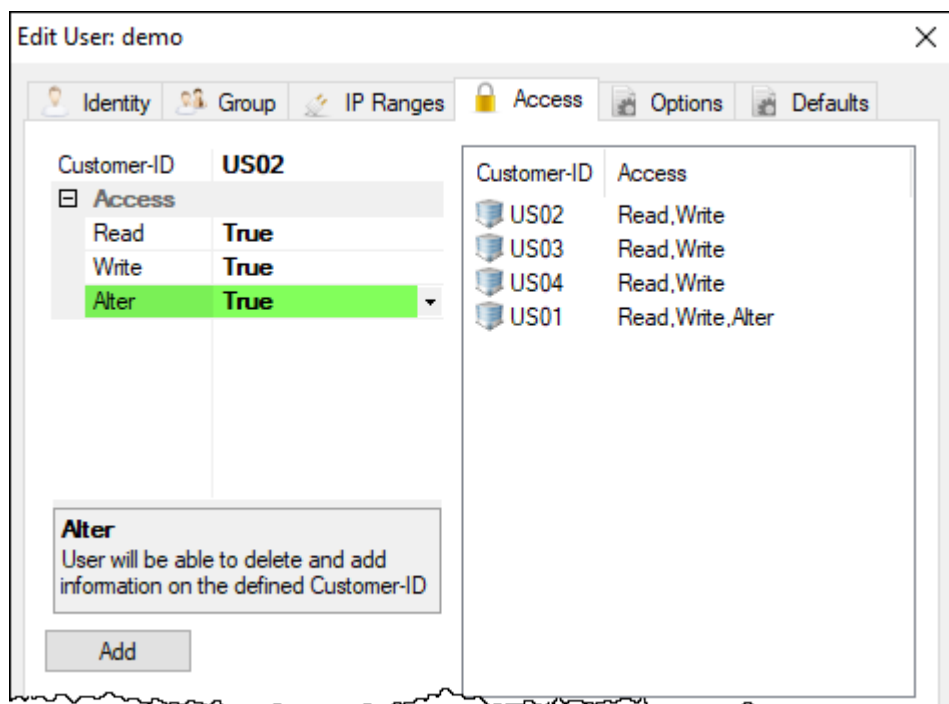
## Security Does Not Allow This Operation

The error Security does not allow this operation indicates your [User-ID](#) does not have sufficient access rights to add volumes to TapeTrack.



To add [Volumes](#) you will need to either:

- Have you Administrator [raise your access](#) to include `Alter` rights.
- Have a [User](#) with `Alter` rights add the [Volumes](#) for you.



## Dissallowed Volume Serial

The error `Dissallowed volume serial` indicates the `Volume-ID` does not meet the filter criteria set in either the `Repository` or `Media` options.

To add new `Volumes` you will need to either:

- Enter a `Volume-ID` that meets the filter criteria.
- Alter the filter criteria to include the new `Volume-ID`.

## Target Repository Unknown

The error `Target Repository Unknown` indicates that there is no current default `Repository` to add new `Volumes` too.

To add new `Volumes` you will need to either:

- Set a current default `Repository` in TapeMaster by right clicking the required `Repository` and selecting `Make Default Repository`.
- Right click the required target `Repository` in TapeMaster and selecting `Scan→To Add and Scan-In` the new `Volumes`.

## An Illegal Key Value Was Specified

The error `An Illegal Key Value Was Specified` indicates that the `Volume-ID` has an illegal character in the barcode value.

To add new `Volumes` you will need to either:

- Remove any illegal characters from the barcode value.
- Hash the barcode value to remove any illegal characters (this allows future scanning of the barcode)

From:  
<https://rtfm.tapetrack.com/> - **TapeTrack Documentation**

Permanent link:  
[https://rtfm.tapetrack.com/troubleshooting/add\\_volumes?rev=1555369616](https://rtfm.tapetrack.com/troubleshooting/add_volumes?rev=1555369616)

Last update: **2025/01/21 22:07**

