

# Troubleshooter: Adding Volumes

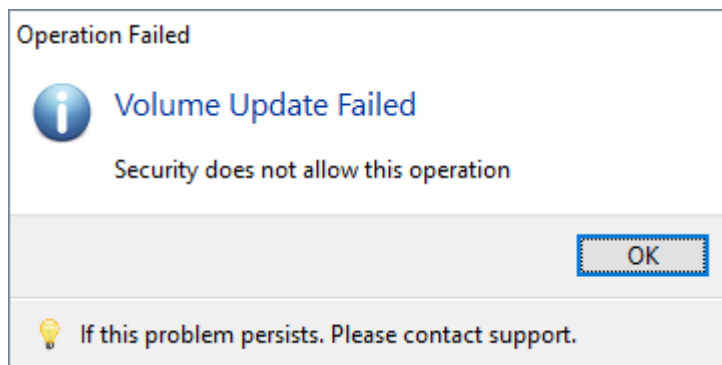
The purpose of this troubleshooter is to diagnose why [Volumes](#) in TapeTrack cannot be added.

Select the error message presented when trying to add new [Volumes](#).

- [Security Does Not Allow This Operation](#)
- [Dissallowed Volume Serial](#)
- [Target Repository Unknown](#)
- [An Illegal Key Value Was Specified](#)

## Security Does Not Allow This Operation

The error `Security does not allow this operation` indicates your [User-ID](#) does not have sufficient access rights to add volumes to TapeTrack.



To add [Volumes](#) you will need to either:

- Have you Administrator [raise your access](#) to include `Alter` rights.
- Have a [User](#) with `Alter` rights add the [Volumes](#) for you.

## Dissallowed Volume Serial

The error `Dissallowed volume serial` indicates the [Volume-ID](#) does not meet the filter criteria set in either the [Repository](#) or [Media](#) options.

To add new [Volumes](#) you will need to either:

- Enter a [Volume-ID](#) that meets the filter criteria.
- Alter the filter criteria to include the new [Volume-ID](#).

## Target Repository Unknown

The error `Target Repository Unknown` indicates that there is no current default [Repository](#) to add new [Volumes](#) too.

To add new [Volumes](#) you will need to either:

- Set a current default [Repository](#) in TapeMaster by right clicking the required [Repository](#) and selecting Make Default Repository.
- Right click the required Target [Repository](#) in TapeMaster and selecting Scan→To Add and Scan-In the new [Volumes](#).

## An Illegal Key Value Was Specified

The error An Illegal Key Value Was Specified indicates that the [Volume-ID](#) has an illegal character in the barcode value.

To add new [Volumes](#) you will need to either:

- Remove any illegal characters from the barcode value.
- Hash the barcode value to remove any illegal characters (this allows future scanning of the barcode)

From:

<https://rtfm.tapetrack.com/> - **TapeTrack Documentation**

Permanent link:

[https://rtfm.tapetrack.com/troubleshooting/add\\_volumes?rev=1555369780](https://rtfm.tapetrack.com/troubleshooting/add_volumes?rev=1555369780)

Last update: **2025/01/21 22:07**

