

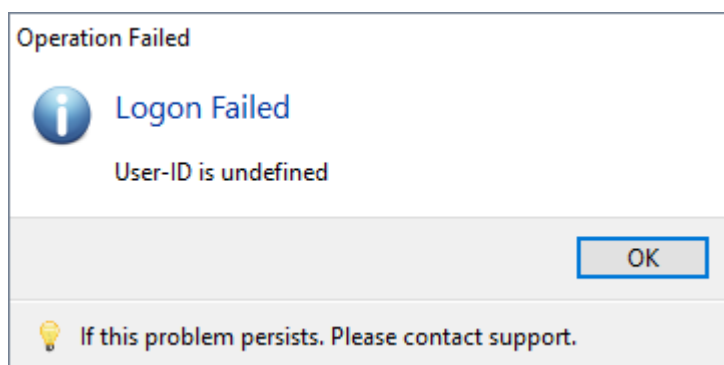
Troubleshooter: Login

The purpose of this troubleshooter is to diagnose why a user cannot login to the TapeTrack Server software.

When logging-in, you can receive one of the following errors:

1. User is undefined.
2. Authorization failure
3. User has been revoked.
4. Connection to Server Failed.

User ID is Undefined

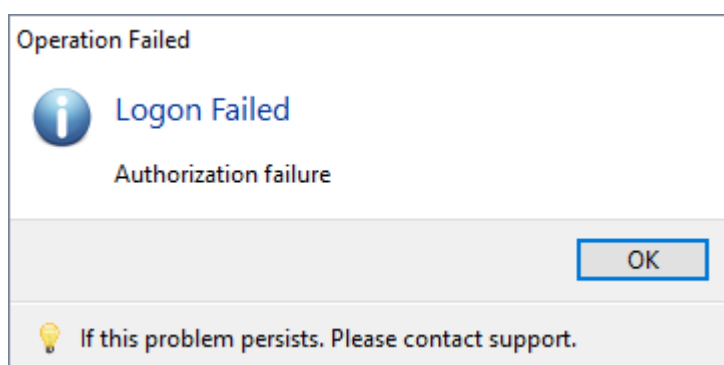


User ID is undefined error is presented when there is no matching user in TapeTrack. If you have previously logged in with this User ID, check:

- Caps lock is not on.
- No typo's when entering User ID.
- If using Windows AD, your TapeTrack User ID must match your Windows AD user name.
- Your User ID has not been deleted from TapeTrack.

If you have not previously logged in with this User ID, check, through your tapemaster administrator, your User ID has been created in TapeTrack with the correct spelling.

Authorization Failure

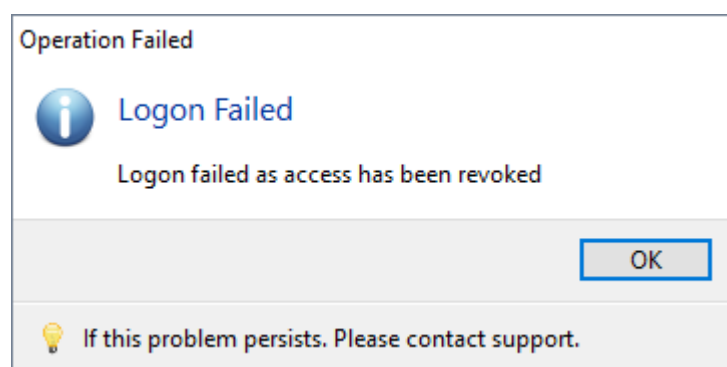


Authorization Failure error is presented when the password, when logging in, is incorrect. If you have previously logged in with this User ID, check:

- Caps lock is not on.
- No typo's when entering.
- If using Windows AD, ensure the **No MD5** checkbox on the login screen is checked.
- If using Windows AD, ensure your password matches your current AD password.
- Your tapemaster administrator has not changed your password.

If you have not previously logged in with this User ID, check, through your tapemaster administrator, your User ID has been created in TapeTrack with the correct spelling.

Access Revoked



Access Revoked Error is presented when the User ID has tried multiple unsuccessful attempts to login to TapeTrack and, for security reasons, had access revoked, or the User ID has had access revoked by a tapemaster user.



If the User ID has been revoked without the user trying to login the cause will usually be a scheduled batch script trying to login with incorrect or outdated credentials. it is best practice to create a user ID to be used for scheduled batch scripts to avoid this problem.

Having a user with tapemaster rights reset your password in [TapeMaster](#) (even if using Windows AD) will reinstate TapeTrack access. Alternatively, if you have administrative rights to the server you can run the **Reset Password.bat** file located in the TapeTrack install directory TapeTrack\TapeTrack Framework Server\scripts\ This file will unconditionally, provided you have correct access rights, reset the specified user ID.

If, after following the above information, you are still experiencing login problems or you require further information [contact GazillaByte for software support](#).

From:

<https://rtfm.tapetrack.com/> - **TapeTrack Documentation**

Permanent link:

<https://rtfm.tapetrack.com/troubleshooting/login?rev=1551292533>

Last update: **2025/01/21 22:07**

